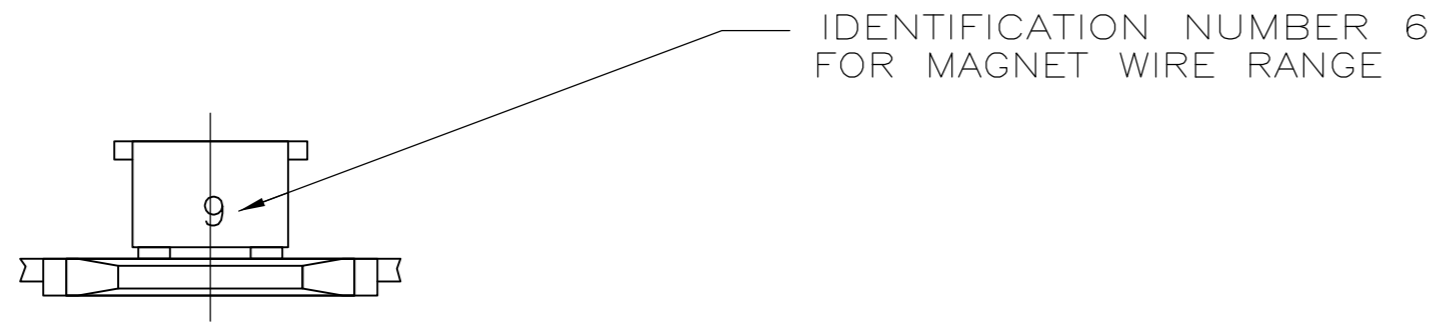


THIS DRAWING IS UNPUBLISHED. RELEASED FOR PUBLICATION
 © COPYRIGHT - By - ALL RIGHTS RESERVED.

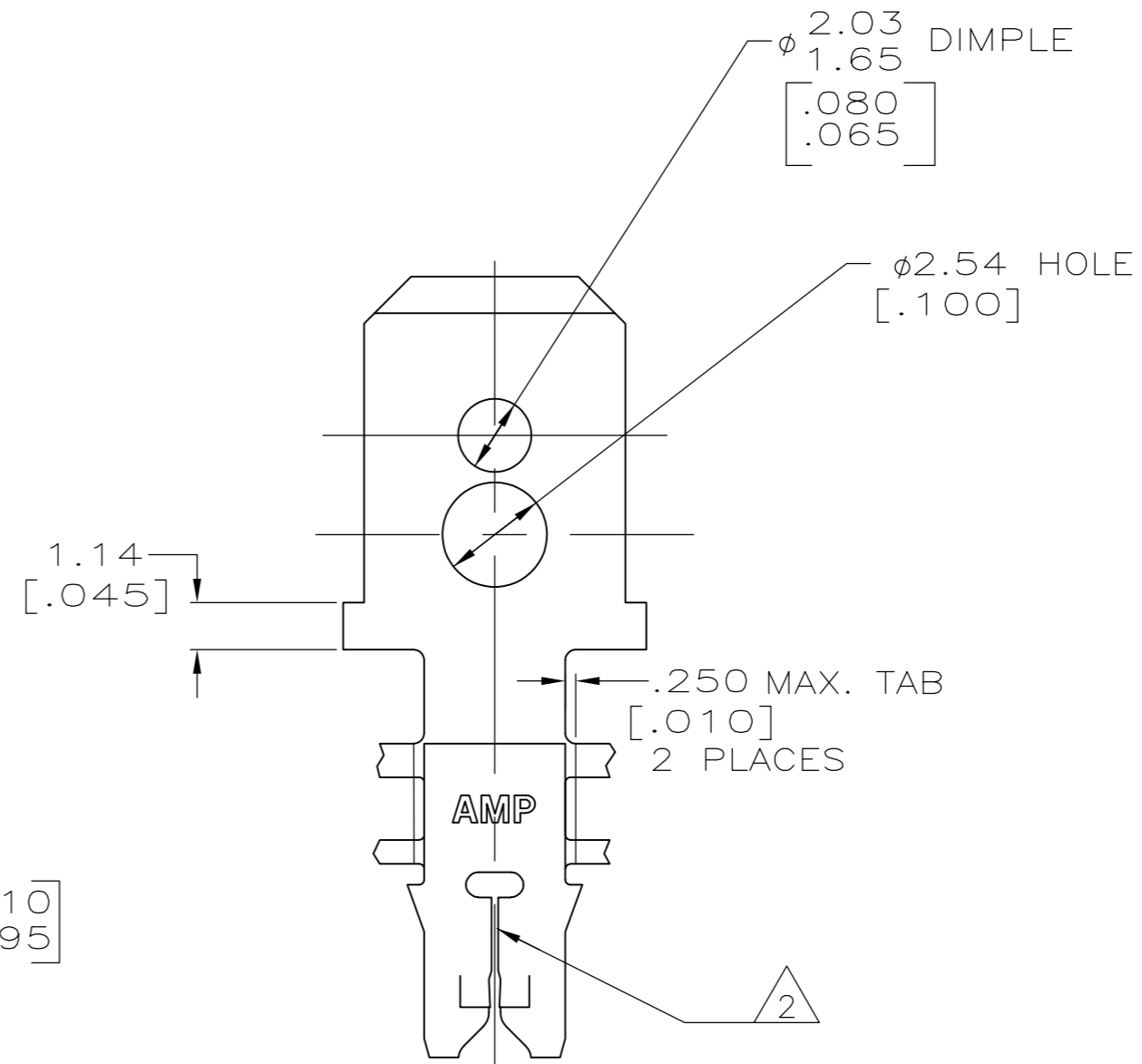
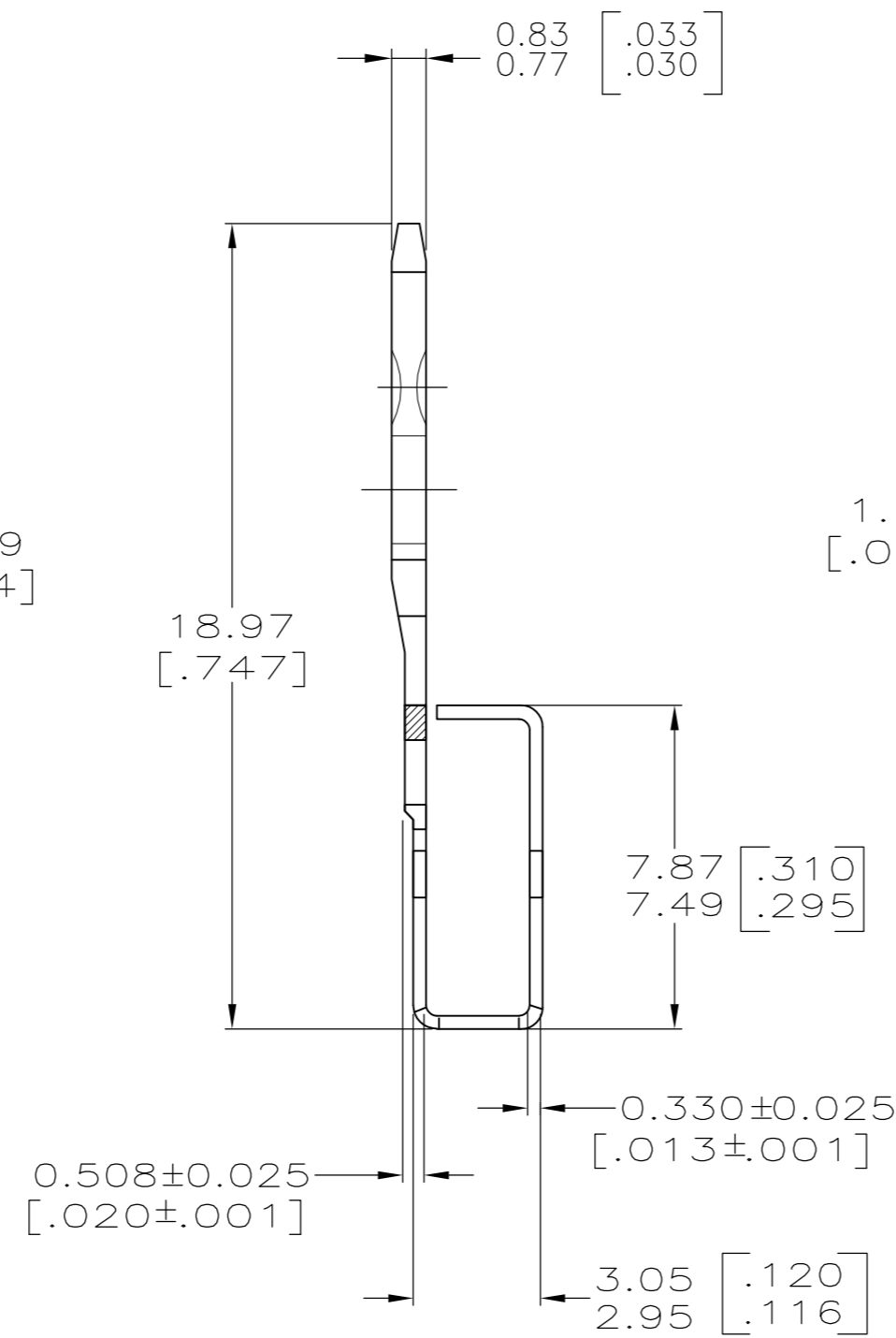
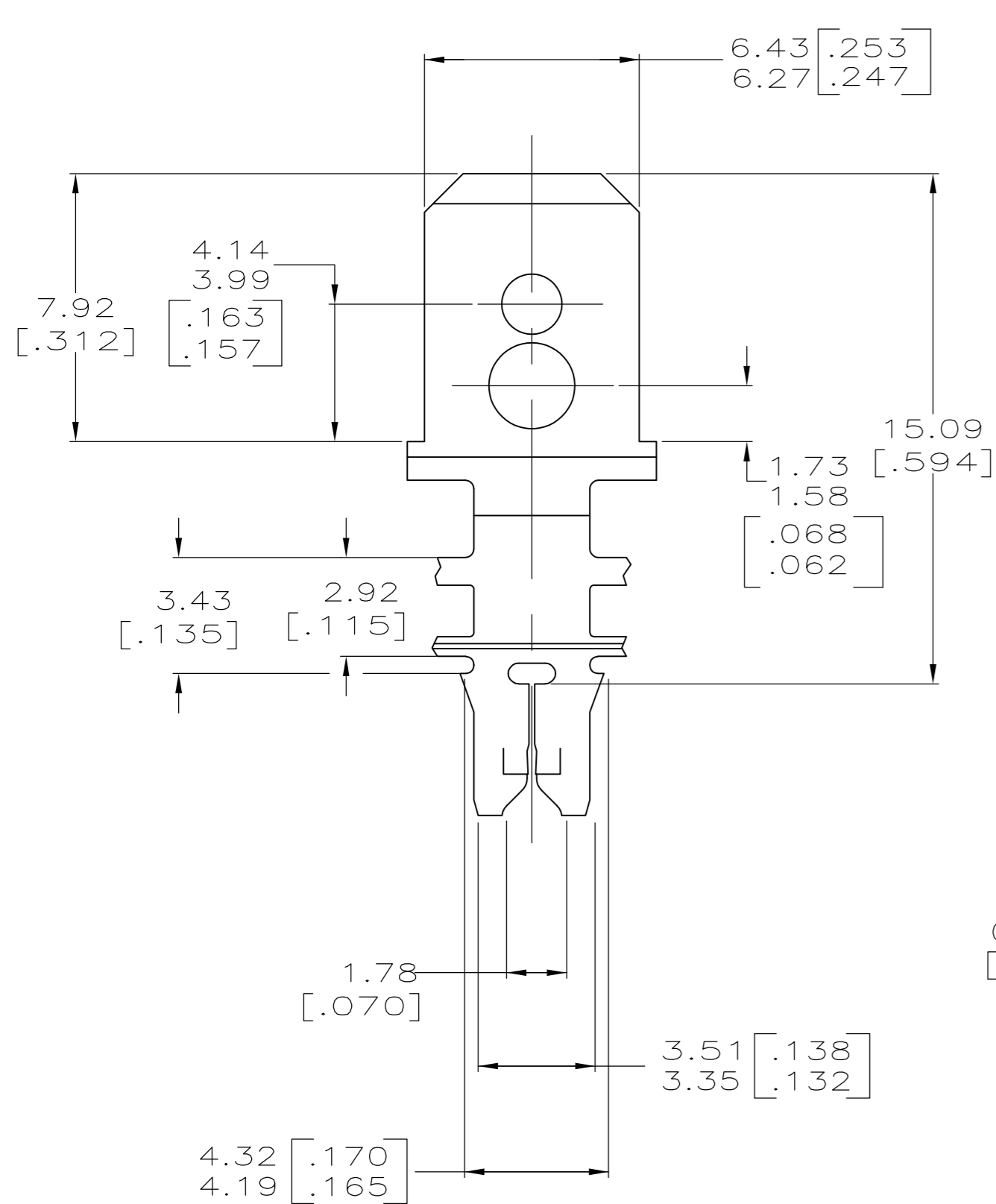
| LOC | | DIST | | REVISIONS | | | |
|-----|-----|-------------|---------------|-----------|-----|------|--|
| P | LTR | DESCRIPTION | | DATE | DWN | APVD | |
| AF | 50 | D1 | ECR-15-005665 | 10AUG2015 | BDA | PKS | |



1 CONTINUOUS STRIP ON REELS WITH TERMINALS LOCATED ON 8.38 ± 0.08 [.330 ± .003] CENTERS.

2 SLOT TERMINATES EITHER A SINGLE OR DOUBLE MAGNET WIRE OF THE SAME TYPE AND SIZE, COPPER RANGE; 0.25–0.36mm [#30–#27] AWG. ALUMINUM RANGE: 0.32–0.45mm [#28–#25] AWG. ALUMINUM WIRE RANGE APPLIES FOR POST-TIN PLATED VERSIONS ONLY.

3 AFTER INSERTION INTO PLASTIC HOLDER, TAB PORTION MUST BE BENT OVER 45° TO 90° OR POTTED-IN TO PREVENT PULL-OUT WHEN MATING RECEPTACLE IS DISCONNECTED.



63328-1
PART NUMBER

| | | | | | | | |
|--|--------------|------------------|--------------|---|---------------------------|--|--|
| THIS DRAWING IS A CONTROLLED DOCUMENT. | | DWN | R.GRZYBOWSKI | 1MAY96 | TE TE Connectivity | | |
| DIMENSIONS: mm [INCHES] | | CHK | M.S.FEHER | 1MAY96 | | | |
| TOLERANCES UNLESS OTHERWISE SPECIFIED: | | APVD | G.PORTA | 1MAY96 | NAME | | |
| 0 PLC | ± - | PRODUCT SPEC | | TERMINAL, TAB 6.35[.250] FASTON™, MAG-MATE™ | | | |
| 1 PLC | ± - | APPLICATION SPEC | | 108-2012 | | | |
| 2 PLC | ± 0.25[.010] | WEIGHT | | 114-2046 | | | |
| 3 PLC | ± - | MATERIAL | | 082 PRE-MILLED BRASS | | | |
| 4 PLC | ± - | FINISH | | .002032[.000080] MIN TIN PER MIL-T-01727 | | | |
| ANGLES | ± - | CUSTOMER DRAWING | | SCALE 6:1 SHEET 1 OF 1 REV D1 | | | |