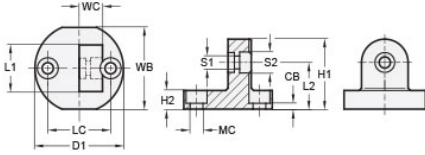




MT8-CBSW-16-AN

Ruland Swivel Clamp Connector Base, Ruland Swivel Thru Hole 4.5mm, Clamp Width 16mm, Clamp Screw M4, Black Anodized Aluminum



Description

Ruland MT8-CBSW-16-AN is a swivel clamp connector base with a 29mm base width, 31.5mm base diameter, 16mm clamp width, M4 clamp screw, and 25mm overall length. It is designed to fit with MT8 swivel clamp joints, t-swivel clamp joints, and swivel mounts with the same width and height. When combined with a swivel clamp or connector MT8-CBSW-16-AN is an ideal articulating mounting solution for screens, sensors, reflectors, plexiglass machine guards, and other components that require frequent adjustments. An MT8-ALK-M4-16 adjustable clamping handle can be used to join it to clamps and connectors for rapid repositioning without the use of tools. It is aluminum with a black anodized finish and screws are 304 stainless steel for added corrosion resistance when compared to unplated types. MT8-CBSW-16-AN can be permanently installed on extruded aluminum frames, sheet metal, and other surfaces using M4 hardware or the user can opt for portability by using MAGNET-43-22 magnetic base. It is manufactured by Otto Ganter, inventoried by Ruland, and RoHS3 compliant.

Product Specifications

Base Width WB	29 mm	Base Height H2	7 mm
Base Diameter D1	31.5 mm	Clamp Length L1	16 mm
Clamp Width WC	8 mm	Overall Height H1	25 mm
Center To Center LC	22 mm	Edge To Center L2	17 mm
Mounting Counterbore Diameter MC	M4	Counterbore to Base CB	3 mm
Swivel Counterbore 1 Diameter S1	4.5 mm	Swivel Counterbore 2 Diameter S2	7.5 mm
Material Specification	Anodized Aluminum	Manufacturer	JW Winco/ Otto Ganter
Country of Origin	Germany	Weight (lbs)	0.044100
UPC	634529231388	Tariff Code	7609.00.0000
UNSPC	31162908		