

SPRING-LINE® D-Connector Gaskets

SPRING-LINE D-Connector Gaskets

Parker Chomerics SPRING-LINE D-connector gaskets answer most shielding and grounding needs for standard connector interfaces. The gaskets are available in both high performance beryllium-copper and economical stainless steel. D-connector gaskets offer excellent EMI protection by ensuring that maximum surface contact is achieved via independent fingers. This will lower closure force while improving conformance to surface irregularities. Table 1 lists all standard gasket configurations available for 9-, 15-, 25-, 37- and 50-pin connectors. Each connector standard is available with two cut out configurations (dimensions A and E, see Table 1).



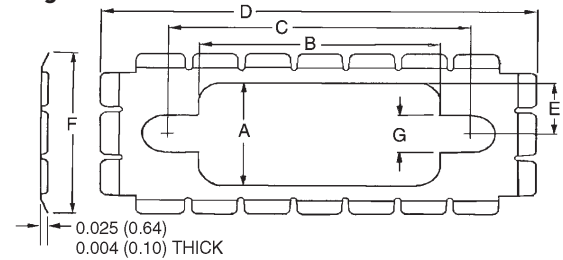
Table 1

XXXX	Material	A	B	C	D	E	F	G
09A1	SS	0.44 (11.18)	0.78 (19.81)	0.98 (24.89)	1.41 (35.81)	0.22 (5.59)	0.69 (17.53)	0.16 (4.06)
09A2	SS	0.35 (8089)	0.78 (19.81)	0.98 (24.89)	1.41 (35.81)	0.18 (4.57)	0.69 (17.53)	0.16 (4.06)
09B1	BeCu	0.44 (11.18)	0.78 (19.81)	0.98 (24.89)	1.41 (35.81)	0.22 (5.59)	0.69 (17.53)	0.16 (4.06)
09B2	BeCu	0.35 (8089)	0.78 (19.81)	0.98 (24.89)	1.41 (35.81)	0.18 (4.57)	0.69 (17.53)	0.16 (4.06)
15A1	SS	0.44 (11.18)	1.11 (28.19)	1.31 (33.27)	1.74 (44.20)	0.22 (5.59)	0.69 (17.53)	0.16 (4.06)
15A2	SS	0.35 (8089)	1.11 (28.19)	1.31 (33.27)	1.74 (44.20)	0.18 (4.57)	0.69 (17.53)	0.16 (4.06)
15B1	BeCu	0.44 (11.18)	1.11 (28.19)	1.31 (33.27)	1.74 (44.20)	0.22 (5.59)	0.69 (17.53)	0.16 (4.06)
15B2	BeCu	0.35 (8089)	1.11 (28.19)	1.31 (33.27)	1.74 (44.20)	0.18 (4.57)	0.69 (17.53)	0.16 (4.06)
25A1	SS	0.44 (11.18)	1.65 (41.91)	1.85 (46.99)	2.28 (57.91)	0.22 (5.59)	0.69 (17.53)	0.16 (4.06)
25A2	SS	0.35 (8089)	1.65 (41.91)	1.85 (46.99)	2.28 (57.91)	0.18 (4.57)	0.69 (17.53)	0.16 (4.06)
25B1	BeCu	0.44 (11.18)	1.65 (41.91)	1.85 (46.99)	2.28 (57.91)	0.22 (5.59)	0.69 (17.53)	0.16 (4.06)
25B2	BeCu	0.35 (8089)	1.65 (41.91)	1.85 (46.99)	2.28 (57.91)	0.18 (4.57)	0.69 (17.53)	0.16 (4.06)
37A1	SS	0.44 (11.18)	2.29 (58.17)	2.50 (63.50)	2.93 (74.42)	0.22 (5.59)	0.69 (17.53)	0.16 (4.06)
37A2	SS	0.35 (8089)	2.29 (58.17)	2.50 (63.50)	2.93 (74.42)	0.18 (4.57)	0.69 (17.53)	0.16 (4.06)
37B1	BeCu	0.44 (11.18)	2.29 (58.17)	2.50 (63.50)	2.93 (74.42)	0.22 (5.59)	0.69 (17.53)	0.16 (4.06)
37B2	BeCu	0.35 (8089)	2.29 (58.17)	2.50 (63.50)	2.93 (74.42)	0.18 (4.57)	0.69 (17.53)	0.16 (4.06)
50A1	SS	0.55 (13.97)	2.20 (55.88)	2.41 (61.21)	2.84 (72.14)	0.28 (7.11)	0.80 (20.32)	0.16 (4.06)
50A2	SS	0.45 (11.43)	2.20 (55.88)	2.41 (61.21)	2.84 (72.14)	0.23 (5.84)	0.80 (20.32)	0.16 (4.06)
50B1	BeCu	0.55 (13.97)	2.20 (55.88)	2.41 (61.21)	2.84 (72.14)	0.28 (7.11)	0.80 (20.32)	0.16 (4.06)
50B2	BeCu	0.45 (11.43)	2.20 (55.88)	2.41 (61.21)	2.84 (72.14)	0.23 (5.84)	0.80 (20.32)	0.16 (4.06)

Table 2

MATERIAL PROPERTIES
Stainless Steel Alloy - 301/302 Hardness - 1/2H
Beryllium-Copper Alloy - 25 (172) Temper (1,000 psi) - 1/4HT

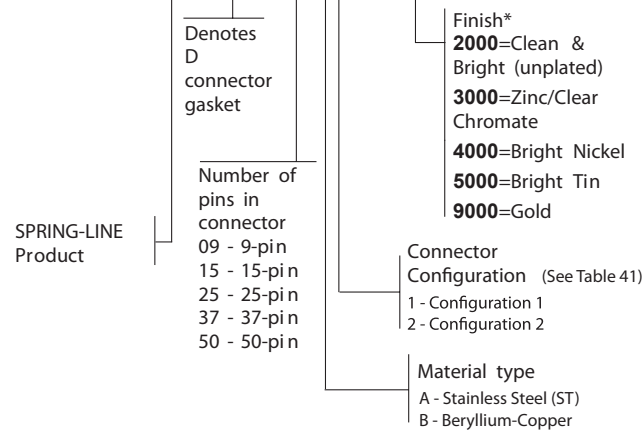
Figure 1



Ordering Procedure

Referring to Table 41 use the following part number to order D-connector gaskets.

81 - D - XX XX - FFFF



* For additional plating options, please contact Parker Chomerics