

Fig. 1 : RECOMMENDED PATTERN Fig. 2 : PLATING SPECIFICATION (40:1)

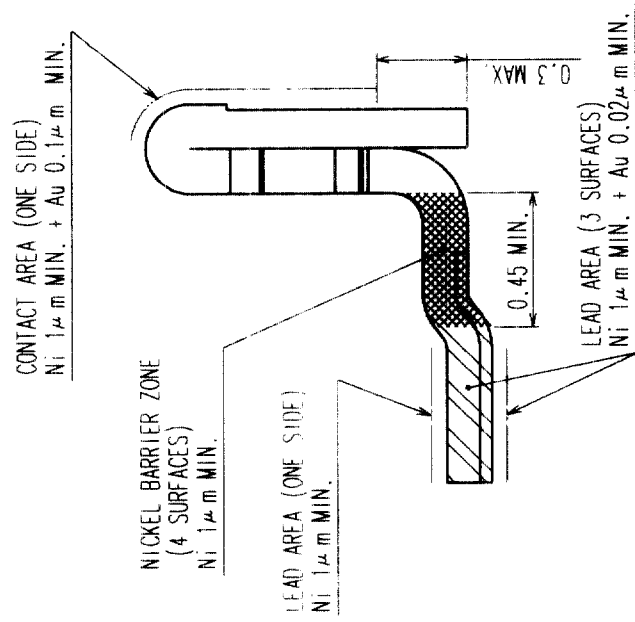
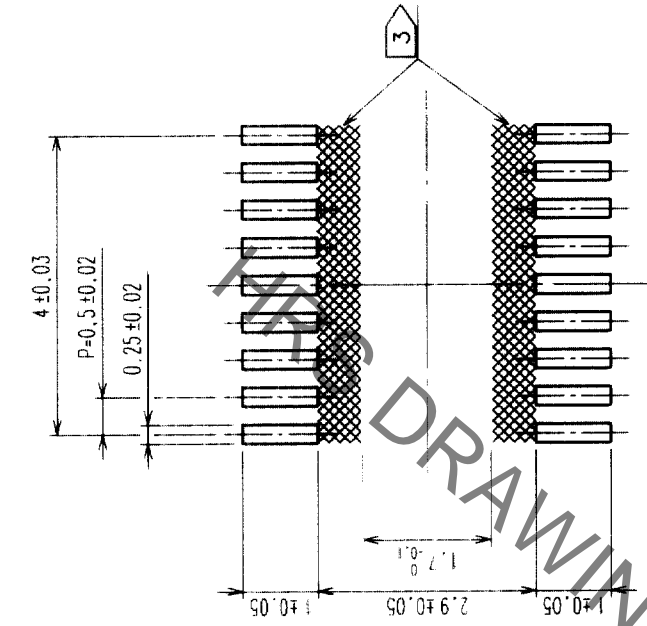


Fig. 3 : A-A CROSS SECTION VIEW

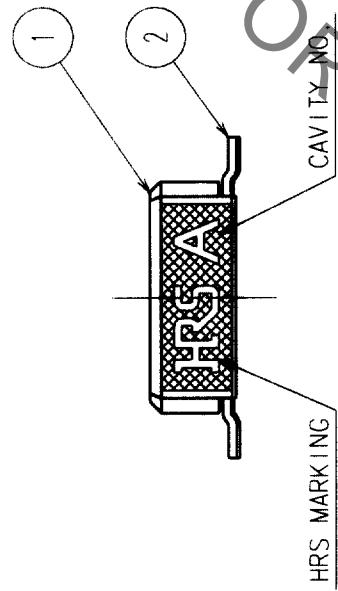


Fig. 4 : MATING VIEW

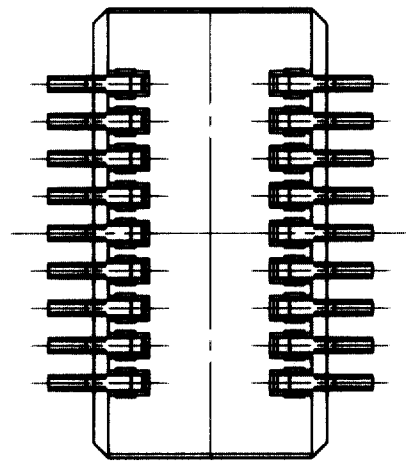
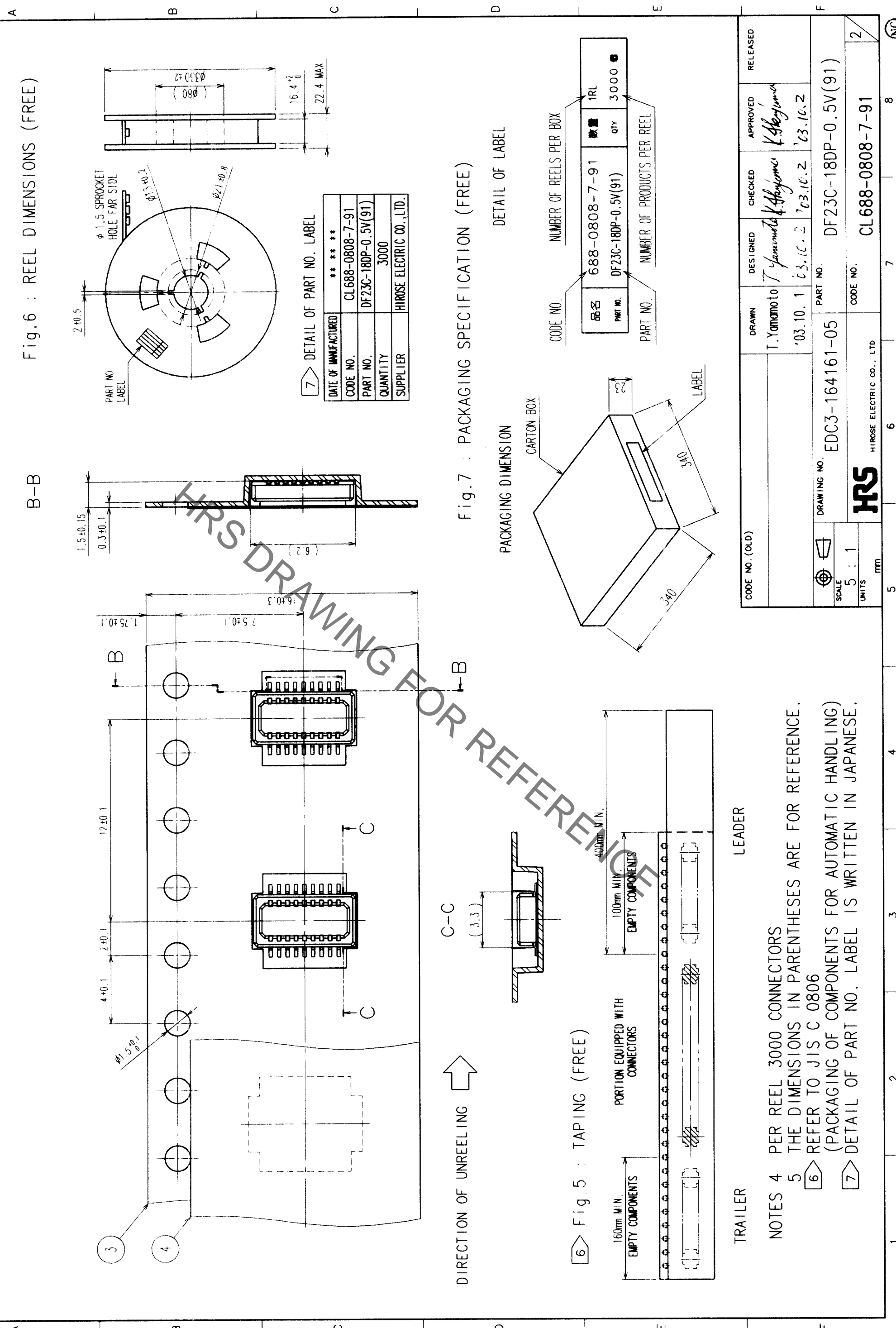


Fig. 5 : A-A CROSS SECTION VIEW

NOTES 1 LEAD CO-PLANARITY SHALL BE 0.1mm MAX.
 2 REFER TO Fig.2
 3 WHEN A PART MARKED WITH HAS A PATTERN BUT NO RESIST ON IT, TAKE CARE TO PREVENT THE CONNECTOR FROM TOUCHING IT.

2	PHOSPHOR BRONZE	2	POLYESTER	4	CLEAR
1	LOP	BLACK,UL94V-0	3	PS	CLEAR
NO.	MATERIAL	FINISH, REMARKS	NO.	MATERIAL	FINISH, REMARKS
CODE NO. (OLD)			DRAWN	DESIGNED	CHECKED
			T. Yamamoto	T. Yamamoto	K. Abeyama
			'03.10.1	'03.10.2	'03.10.2
DRAWING NO. EDC3-164161-05		PART NO. DF23C-18DP-0.5V(91)		APPROVED	
SCALE 10 : 1		CODE NO. CL688-0808-7-91		RELEASED	
UNITS (mm)		HIMOTO		K. Abeyama	

TO



TO	

NOTES

4 PER REEL 3000 CONNECTORS

5 THE DIMENSIONS IN PARENTHESES ARE FOR REFERENCE.

6 REFER TO JIS C 0806 (PACKAGING OF COMPONENTS FOR AUTOMATIC HANDLING)

7 DETAIL OF PART NO. LABEL IS WRITTEN IN JAPANESE.

CODE NO. (OLD)		DESIGNED	T. Yamamoto	CHECKED	K. Hayama	APPROVED	K. Hayama	RELEASED	
DRAWN	T. Yamamoto	'03.10.1	'03.10.2	'03.10.2	'03.10.2				
SCALE	5 : 1								
UNITS	MM								
DRAWING NO.	EDC3-164161-05	PART NO.	DF23C-18DP-0.5V(91)						
		CODE NO.	CL688-0808-7-91						

