

Single-Phase Switching Power Supply 120-230 Vac, 15 W Output Power XCSD1015W

- Single-phase input 85...264 Vac / DC 100...370 Vdc
- Short circuit, overload, over temperature, input / output overvoltage protections
- Isolation Class 2, no grounding needed
- Compact dimensions
- Suitable for applications in SELV and PELV circuits



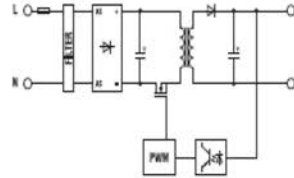
35x62xH90

NOTES

The depth dimension includes the DIN rail clamp.

- (1) With 85...100 Vdc input, constant power, the output current shall be reduced by 30%
- (2) Please apply a derating factor of -0.015 A/°C (24Vdc version) or -0.03 A/°C (12Vdc version) for temperature above 55°C
- (3) The value of the supplied current also depends upon the line resistance

BLOCK DIAGRAM



VERSIONS	Cod. XCSD1015W024VAA CSD1015W024VAA	Cod. XCSD1015W012VAA CSD1015W012VAA
Output 24 Vdc		
Output 12 Vdc		
INPUT TECHNICAL DATA		
Input rated voltage	120-230 Vac (range 85...264 Vac / 100...370 Vdc) (1)	
Frequency	47...63 Hz	
Current @ nominal Iout (Uin 120 / 230 Vac)	0.3 A / 0.12 A ± 10%	
Inrush peak current	< 5 A	
Power factor	> 0.6	
Internal protection fuse	T 1 A replaceable	
External protection on AC line	circuit breaker: 2 A - C characteristic - fuse: T 2 A	
OUTPUT TECHNICAL DATA		
Output rated voltage	24 Vdc	12 Vdc
Output adjustable range	-	
Continuous current	0.6 A @ 55°C (2)	1.2 A @ 55°C (2)
Overload limit	>0.81 A (3)	>1.6 A (3)
Short circuit peak current	-	
Load regulation	< 1%	
Ripple @ nominal ratings	≤ 50 mVpp	
Hold up time @ In (Uin 120 / 230 Vac)	>12 ms / >20 ms	
Overload / short circuit protections	hiccup at the overload limit with auto reset / over temperature protection	
Status signals	"DC OK" green LED	
Uout threshold for alarm contact	-	
Parallel connection	possible	possible
Redundant parallel connection	possible with external ORing diode	possible with external ORing diode
GENERAL TECHNICAL DATA		
Efficiency (Uin 120 / 230 Vac)	>86% / >86%	>84% / >85%
Dissipated power (Uin 120 / 230 Vac)	2,2 W / 2,2 W	2,7 W / 2,6 W
Operating temperature range	-20...+60°C, with derating over 55°C / thermal protection (2)	
Input / output isolation	3 kVAc / 60 s - SELV output	
Input / ground isolation	class 2 without PE connection	
Output / ground isolation	class 2 without PE connection	
Standard / approvals	IEC950, EN60950, UL508, UL60950	
EMC Standards	EN61000-6-2, EN61000-6-3	
Overvoltage category / Pollution degree	II / 2	
Protection degree	IP 20	
Connection terminal	2.5 mm ² , screw type fixed (24-12 AWG)	
Housing material	UL94V-0 plastic material	
Approx. weight	130 g	
Mounting information	vertical on rail, allow 10 mm spacing between adjacent components	
MOUNTING ACCESSORIES		
Mounting rail type according to IEC60715/TH35-7.5	PR/3/AC, PR/3/AC/ZB, PR/3/AS, PR/3/AS/ZB	