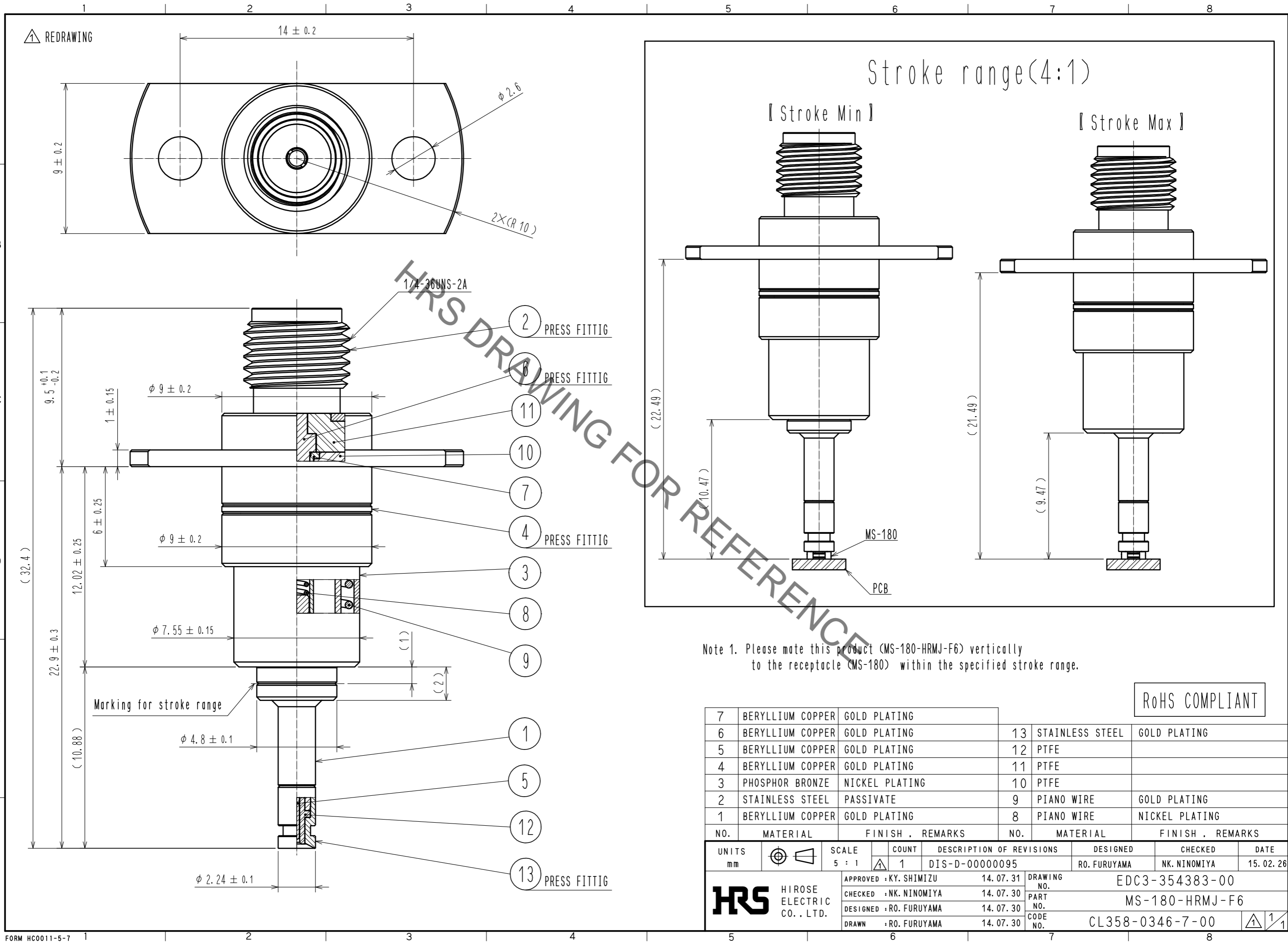


May.1.2023 Copyright 2023 HIROSE ELECTRIC CO., LTD. All Rights Reserved.
In case of consideration for using Automotive equipment / device which demand high reliability, kindly contact our sales window correspondents.



Note 1. Please mate this product (MS-180-HRMJ-F6) vertically to the receptacle (MS-180) within the specified stroke range.

RoHS COMPLIANT

NO.	MATERIAL	FINISH . REMARKS	NO.	MATERIAL	FINISH . REMARKS
7	BERYLLIUM COPPER	GOLD PLATING	13	STAINLESS STEEL	GOLD PLATING
6	BERYLLIUM COPPER	GOLD PLATING	12	PTFE	
5	BERYLLIUM COPPER	GOLD PLATING	11	PTFE	
4	BERYLLIUM COPPER	GOLD PLATING	10	PTFE	
3	PHOSPHOR BRONZE	NICKEL PLATING	9	PIANO WIRE	GOLD PLATING
2	STAINLESS STEEL	PASSIVATE	8	PIANO WIRE	NICKEL PLATING
1	BERYLLIUM COPPER	GOLD PLATING			

UNITS mm		SCALE 5 : 1	COUNT 1	DESCRIPTION OF REVISIONS DIS-D-00000095	DESIGNED RO. FURUYAMA	CHECKED NK. NINOMIYA	DATE 15. 02. 26
APPROVED : KY. SHIMIZU 14. 07. 31				DRAWING NO. EDC3-354383-00			
CHECKED : NK. NINOMIYA 14. 07. 30				PART NO. MS-180-HRMJ-F6			
DESIGNED : RO. FURUYAMA 14. 07. 30				CODE NO. CL358-0346-7-00			
DRAWN : RO. FURUYAMA 14. 07. 30							