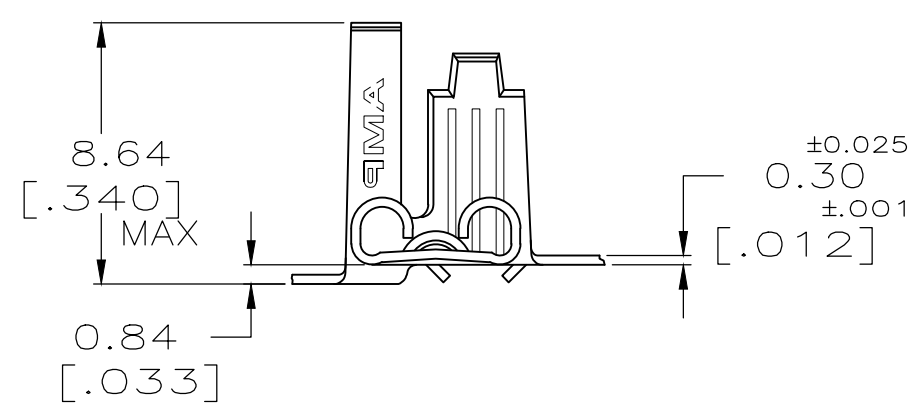
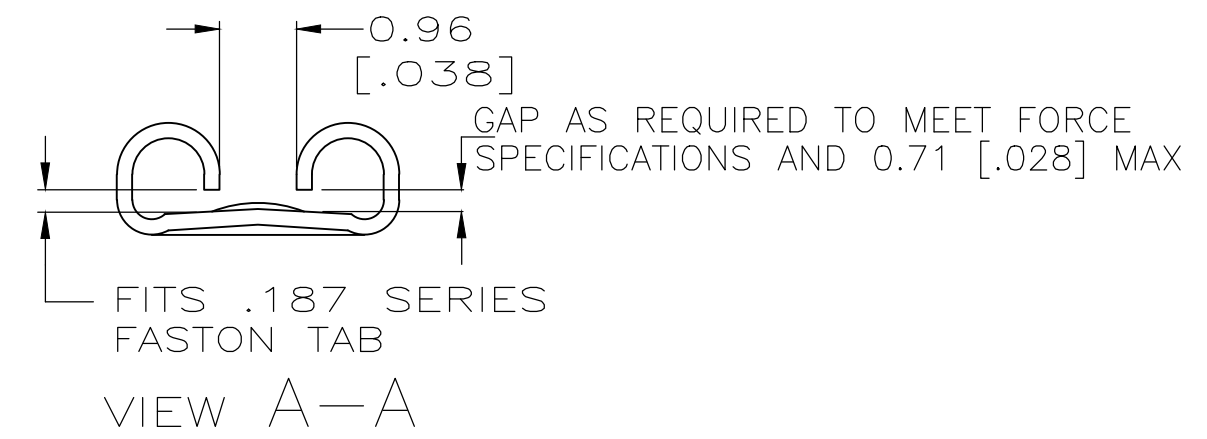
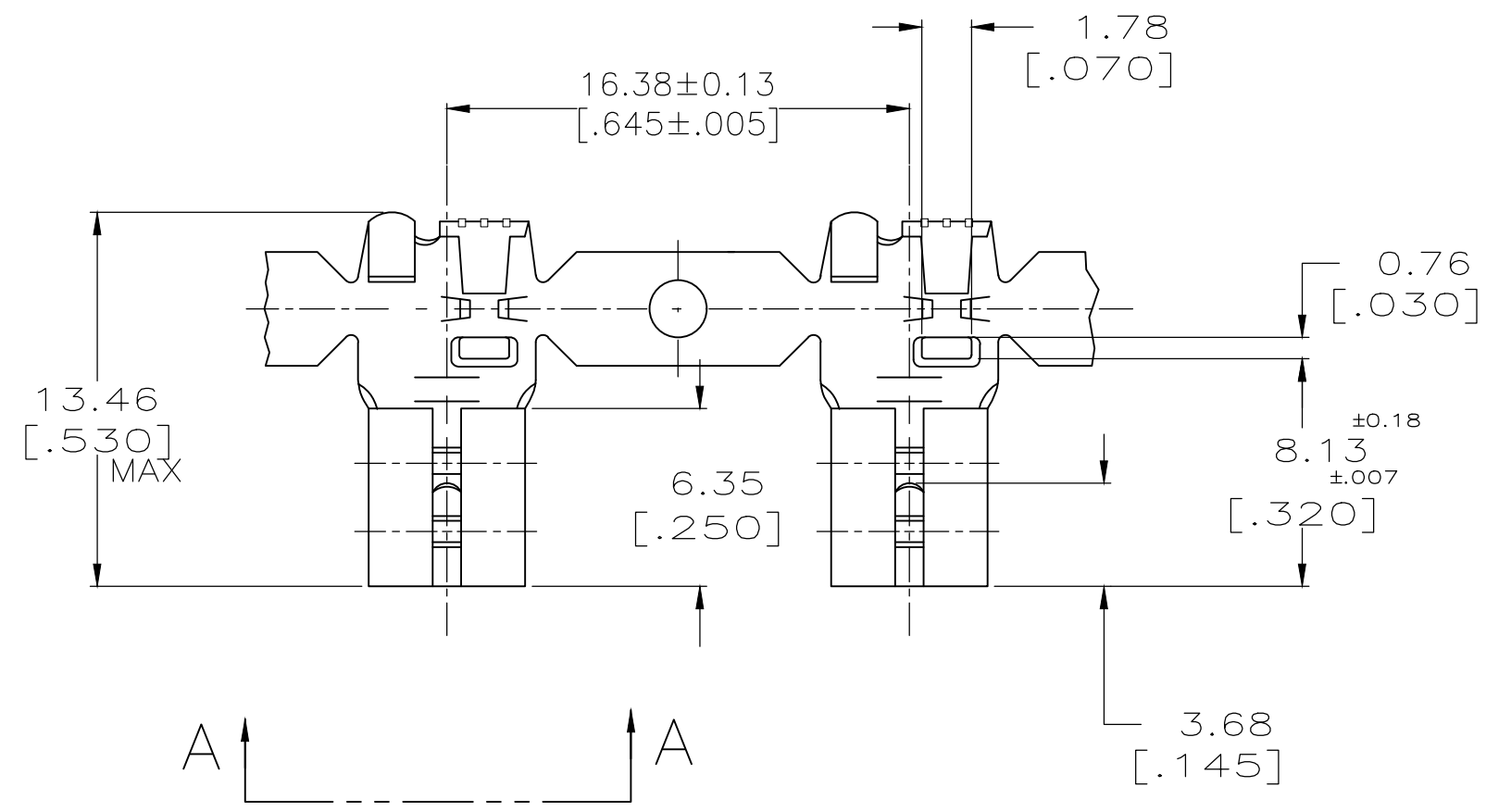


THIS DRAWING IS UNPUBLISHED. RELEASED FOR PUBLICATION
 © COPYRIGHT - By - ALL RIGHTS RESERVED.

LOC	DIST	REVISIONS			
P	LTR	DESCRIPTION	DATE	DWN	APVD
AF	50	L1	REVISED PER ECR-20-009164	28JUL2020	MK DH

- 1 CONTINUOUS STRIP ON REELS
- △3 SILVER PL 0.00381 [.000150] MIN THK.
- 4 WIRE SIZE IS 0.5-1.4mm [20-16] AWG
- 5 INSULATION RANGE IS 2.79-4.32 [.110-.170] DIA.
- 6 MATING TAB THK IS 0.84-0.76 [.033-.030].
- △7 PRELIMINARY - NOT FOR PRODUCTION
- 8 PACKAGE ON TRAVERSE REELS 12,000 PCS PER REEL WITH INTERLEAVING PAPER



--	△7 62591-2
△3	62591-2
TIN	62591-1
FINISH	PART NO

THIS DRAWING IS A CONTROLLED DOCUMENT.		DWN	JR RUTH	7/23/91	STE TE Connectivity													
DIMENSIONS: mm [INCHES]		CHK	MS FEHER	7/23/91														
TOLERANCES UNLESS OTHERWISE SPECIFIED:		APVD	D REINER	7/23/91	NAME													
<table border="0"> <tr><td>0 PLC</td><td>± -</td></tr> <tr><td>1 PLC</td><td>± -</td></tr> <tr><td>2 PLC</td><td>± 0.38 [.015]</td></tr> <tr><td>3 PLC</td><td>± -</td></tr> <tr><td>4 PLC</td><td>± -</td></tr> <tr><td>ANGLES</td><td>± -</td></tr> </table>		0 PLC	± -	1 PLC	± -	2 PLC	± 0.38 [.015]	3 PLC	± -	4 PLC	± -	ANGLES	± -	PRODUCT SPEC		RECEPTACLE, FASTON, 4.75 [.187] SERIES		
0 PLC	± -																	
1 PLC	± -																	
2 PLC	± 0.38 [.015]																	
3 PLC	± -																	
4 PLC	± -																	
ANGLES	± -																	
MATERIAL: BRASS		FINISH: SEE TABLE		APPLICATION SPEC		RESTRICTED TO												
CUSTOMER DRAWING				WEIGHT	-	SIZE	A3											
				CAGE CODE	00779	DRAWING NO	C-62591											
				SCALE	4:1	SHEET	1 OF 1											
				REV	L1													