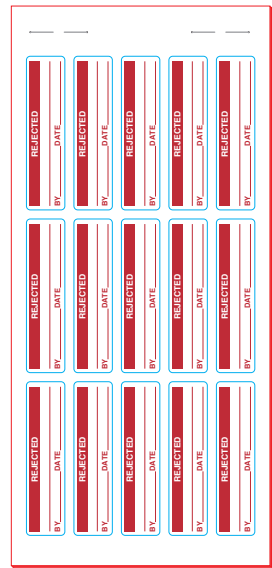
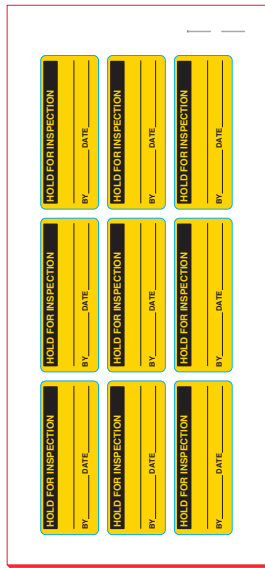


12 sheets/kit

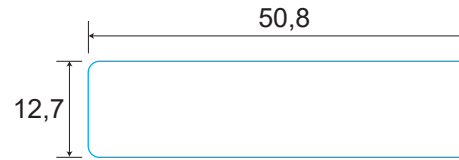
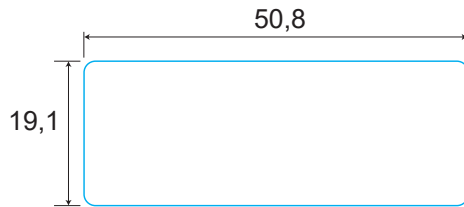


4 sheets/kit

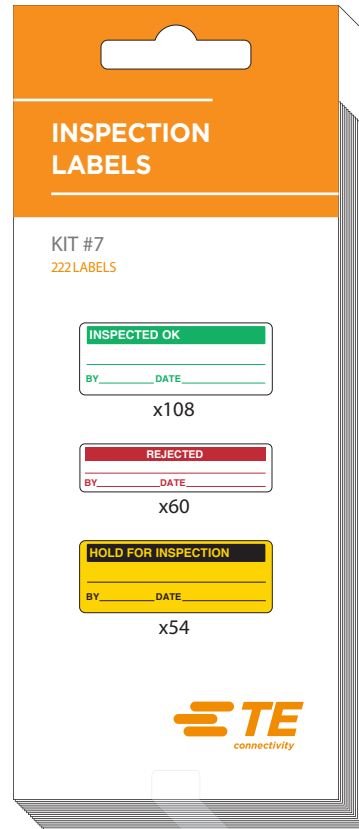


6 sheets/kit

- Kiss cut
- Back slit
- Perforation
- Die cut
- Adhesive cut
- 45° die cut
- 2 kiss cut enductions

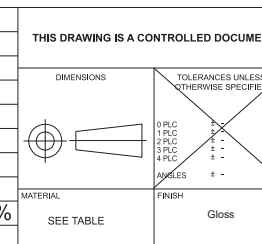


Kit size: 86,0 x 210,0
[3.39" x 8.27"]



Customer drawing

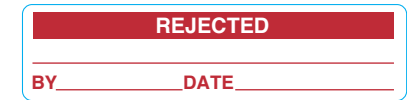
TOLERANCES	
Label height :	$\pm 0,2$
Label width :	$\pm 0,2$
Web width :	$\pm 0,5$
Vertical repeat :	$\pm 0,3^*$
Horizontal repeat :	$\pm 0,5^*$
Print positioning :	$\pm 0,5^*$
Left margin :	$\pm 0,5$
Quantity :	0% +2%
* non accumulating	



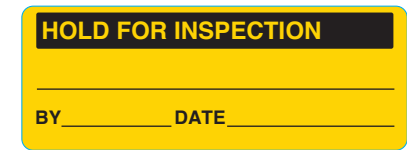
REVISIONS			
Rév.	Description	Visa	Date
A	Drawing creation	EL	27.01.22



x 108 - Green



x 60 - Red



x 54 - Yellow + Black

TOTAL : 222 labels

9 or 15 labels/sheet
22 sheets/kit

TE PN: 2404400-1

All dimensions in mm/[inch]
Labels are centered on the liner except against indication

Overlamination: /			
Material : White PVC			
Adhesive : Permanent			
Liner: Kraft			
DWN	EL / 27.01.22	DATE	
CHK	EL / 27.01.22	DATE	
APVD	SEI / 15.02.22	DATE	
PRODUCT SPEC		Part	
TTDS-249		INSPECTION-LABEL-BK-222	
APPLICATION SPEC		DATE	
WEIGHT	25,5 g (étiq)	SIZE	A4
SCALE	NTS	CAGE CODE	FB1U7
TE DRAWING		RESTRICTED TO	
INSPECTION-LABEL-BK-222_20220127		SHEET 1 OF 1	
CUSTOMER DRAWING		REV A	