

THIS DRAWING IS UNPUBLISHED.

RELEASED FOR PUBLICATION

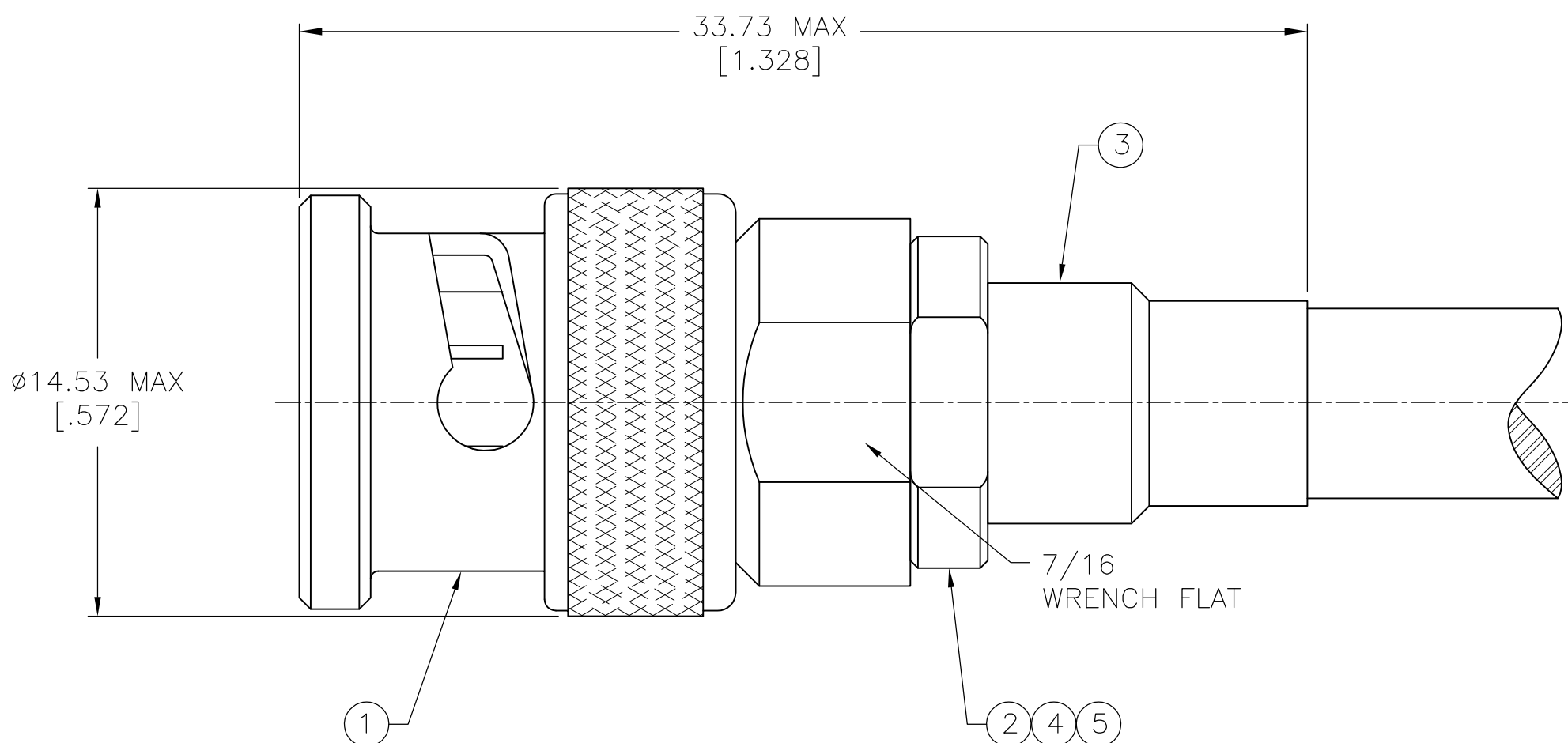
© COPYRIGHT - By -

ALL RIGHTS RESERVED.

LOC  
AJ 00

REVISIONS

| P | LTR | DESCRIPTION               | DATE      | DWN | APVD |
|---|-----|---------------------------|-----------|-----|------|
|   | H   | REVISED PER ECO-14-010738 | 28OCT2014 | G.G | M.Y  |



NOTES:

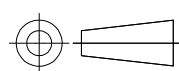
1. USE CRIMPING TOOL 69667.
2. SEE INSTRUCTION SHEET 408-2055.
3. PARTS PACKAGED SEPARATELY.
4. OBSOLETE PARTS: OBSOLETE CIS STREAMLINING PER D.RENAUD/D.SINISI

|                         |                     |                     |                           |                        |                          |                          |          |
|-------------------------|---------------------|---------------------|---------------------------|------------------------|--------------------------|--------------------------|----------|
| <b>4</b> OBSOLETE       | ROLM 49D2401 TWINAX | 332214              | 332222-1                  | 9-332224-0             | 1-332221-5               | 5-330949-0               | 332225-6 |
| SUPERSEDED BY 5332225-5 | RG 108/U & 108A/U   | 332214              | 332222-1                  | 9-332224-0             | 1-332221-4               | 5-330949-0               | 332225-5 |
| OBSOLETE                | TROMPETER TWC-124-2 | 332214              | 332222                    | 1-332224-0             | 1-332221-3               | 2-330949-2               | 332225-3 |
|                         | RG 108/U & 108A/U   | 332214              | 332222                    | 1-332224-0             | 332221                   | 2-330949-2               | 332225   |
|                         | FOR USE WITH CABLE  | <b>5</b> SEAL QTY=1 | <b>4</b> DIELECTRIC QTY=1 | <b>3</b> FERRULE QTY=1 | <b>2</b> CRIMP END QTY=1 | <b>1</b> PLUG ASSY QTY=1 | PART #   |

THIS DRAWING IS A CONTROLLED DOCUMENT.

DIMENSIONS:

mm



TOLERANCES UNLESS OTHERWISE SPECIFIED:

|        |      |
|--------|------|
| 0 PLC  | ± -  |
| 1 PLC  | ± -  |
| 2 PLC  | ± -  |
| 3 PLC  | ± -  |
| 4 PLC  | ± -  |
| ANGLES | ± 1° |

MATERIAL

FINISH

|                  |            |         |
|------------------|------------|---------|
| DWN              | G. VIERA   | 10JUL03 |
| CHK              | J. HAVENER | 10JUL03 |
| APVD             | J. HAVENER | 10JUL03 |
| PRODUCT SPEC     | -          |         |
| APPLICATION SPEC | -          |         |
| WEIGHT           | 0.50 OZ.   | A300779 |

**STE** TE Connectivity

|                  |           |            |                |     |  |
|------------------|-----------|------------|----------------|-----|--|
| NAME             |           |            | PLUG, TWIN BNC |     |  |
| SIZE             | CAGE CODE | DRAWING NO | RESTRICTED TO  |     |  |
|                  |           | C-332225   | -              |     |  |
| CUSTOMER DRAWING |           | SCALE      | SHEET          | REV |  |
|                  |           | 5:1        | 1 OF 1         | H   |  |