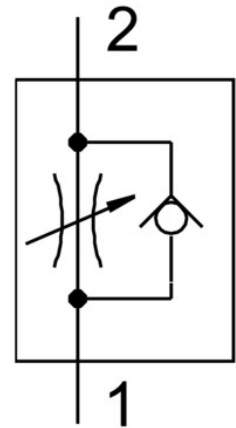


One-way flow control valve GR-1/8-B

Part number: 151215

FESTO



Data sheet

| Feature | Value |
|--|--|
| Valve function | Flow control non-return function |
| Pneumatic connection 1 | G1/8 |
| Pneumatic connection 2 | G1/8 |
| Adjusting element | Knurled screw |
| Type of mounting | Optionally: Front panel mounting With through-hole |
| Standard nominal flow rate in flow control direction | 210 l/min |
| Standard nominal flow rate in non-return direction | 180 l/min ... 275 l/min |
| Operating pressure | 0.5 bar ... 10 bar |
| Ambient temperature | -20 °C ... 60 °C |
| Housing material | Wrought aluminum alloy |
| Explosion prevention and protection | Observe the information on the certificate Zone 1 (ATEX) Zone 2 (ATEX) Zone 21 (ATEX) Zone 22 (ATEX) |
| Mounting position | Any |
| Symbol | 00991453 |
| Operating medium | Compressed air as per ISO 8573-1:2010 [7:4:4] |
| Information on operating and pilot media | Operation with oil lubrication possible (required for further use) |
| LABS (PWIS) conformity | VDMA24364-B1/B2-L |
| Temperature of medium | -20 °C ... 60 °C |
| Nominal width | 3 mm |
| Product weight | 31 g |
| Note on materials | RoHS-compliant |
| Seals material | NBR |
| Sleeve material | POM |
| Material of adjusting screw | High-alloy steel |
| Nut material | Wrought aluminum alloy |