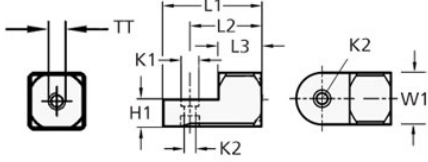
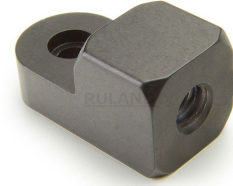




MT8-SWMB-M5-AN

Ruland Swivel Mounting Block, Width/Height 16mm, Length 30mm, Black Anodized Aluminum



Description

Ruland MT8-SWMB-M5-AN is a swivel mounting block with a M5 tapped hole, 8mm base height, 16mm width and height, and 30mm overall length. It is designed to fit with Ruland modular mounting system swivel components that begin with MT8. MT8-SWMB-M5-AN is aluminum with a black anodized finish and screws are 304 stainless steel for added corrosion resistance when compared to unplated types. This swivel mounting block is used to support brackets for mounting sensors, screens, reflectors, plexiglass machine guards, and other industrial components. The bracket is mounted directly to the mounting block by a single M5 screw. An MT8-SWALK-M4-16 adjustable clamping handle can be used to rapidly reposition MT8-SWMB-M5-AN without the use of tools. It is manufactured by Otto Ganter, inventoried by Ruland, and RoHS3 compliant.

Product Specifications

Tapped Thread TT	M5	Counterbore 1 Diameter K1	7 mm
Counterbore 2 Diameter K2	4.5 mm	Width & Height W1	16 mm
Base Height H1	8 mm	Edge To Center Of Counterbore L2	22 mm
Overall Length L1	30 mm	Hub Length LH	13 mm
Material Specification	Anodized Aluminum	Manufacturer	JW Winco/ Otto Ganter
Country of Origin	Germany	Weight (lbs)	0.027000
UPC	634529230060	Tariff Code	7609.00.0000
UNSPC	31162908		