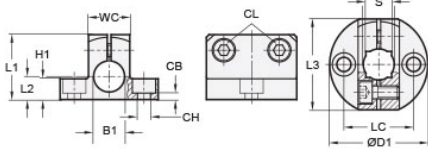




MT10/10-CB2W-A

Ruland Two-Way Base Connector, Thru Hole 10mm, Base Diameter 38mm, Aluminum




Description

Ruland MT10/10-CB2W-A is a two-way base connector with a 38mm base diameter, 10mm round thru holes, an 8mm square thru hole, M5 clamp screws, and an overall length of 24mm. It is designed to fit with Ruland tubes that begin with MT10. MT10/10-CB2W-A is aluminum and screws are 304 stainless steel for use in most industrial applications. This two-way base connector is typically used as a base in support structures for mounting sensors, screens, reflectors, plexiglass machine guards, and other industrial components. It can be permanently installed on extruded aluminum frames, sheet metal, and other surfaces using M5 hardware or the user can opt for portability by using MAGNET-43-27 magnetic base. MT10/10-CB2W-A can have MT10 round and square tubes installed vertically and/or horizontally giving system designers a high degree of flexibility to customize the base to the needs of applications throughout the equipment. MT10:12-ALK-M5-20 adjustable clamping handles can be used in place of standard hardware if rapid fine repositioning of the tube is required. MT10/10-CB2W-A is manufactured by Otto Ganter, inventoried by Ruland, and RoHS3 compliant.

Product Specifications

Thru Hole 1 Diameter B1	10 mm	Thru Hole 2 Diameter B2	10 mm
Thru Hole Tolerance	+0.09/-0 mm	Thru Hole 2 Tolerance	+0.09/-0 mm
Clamp Width WC	16 mm	Clamp Length L3	35 mm
Base Diameter D1	38 mm	Square Thru Hole S	8 mm
Overall Height H1	24 mm	Center To Center LC	27 mm
Edge To Center L2	8 mm	Counterbore Hole CH	M5
Counterbore to Base CB	2.5 mm	Clamp Screw CL	M5
Weight (lbs)	0.079400	Material Specification	Aluminum
Manufacturer	JW Winco/ Otto Ganter	UPC	634529232132
Country of Origin	Germany	Tariff Code	7609.00.0000
UNSPC	31162908		

Note 1 Performance ratings are for guidance only. The user must determine suitability for a particular application.

Prop 65  **WARNING** This product can expose you to the chemical Nickel (metallic), known to the State of California to cause cancer. For more information go to www.P65Warnings.ca.gov.