

LTM4655  
Low EMI Dual 13V–28V<sub>IN</sub>, –12V/2.2A<sub>OUT</sub>  
Negative μModule Regulator

**DESCRIPTION**

Demonstration circuit 2899A is a dual inverting DC/DC converter with a 13V to 28V input voltage range, two 12V outputs at up to 2.5A each featuring the LTM4655. The LTM4655 is a EN55022B compliant 40V, dual 4A or single 8A step-down or 50W inverting DC/DC μModule® regulator.

The switching frequencies of both channels are set at 1.2MHz on DC2899A. If the output voltage collapses sufficiently due to an overload or short-circuit condition, the internal oscillator will foldback to one-fifth of the LTM4655’s programmed switching frequency, protecting the power switch from damage.

Key features of this board include:

- SSFM Jumper for Spread Spectrum Options
- CLKIN Inputs for External Sync
- PGOOD Signals for Each Output

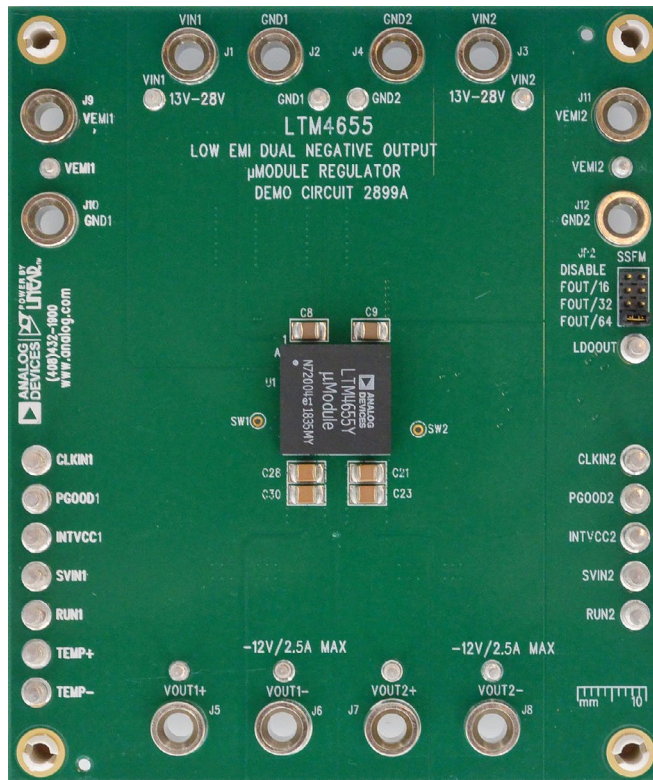
The two channels can be paralleled for higher output current. See the data sheet for more information on setting-up the board for paralleling the two outputs.

The LTM4655 data sheet gives a complete description of the device, its operation and application information. The data sheet must be read in conjunction with this demo manual prior to working on or modifying DC2899A.

**[Design files for this circuit board are available.](#)**

All registered trademarks and trademarks are the property of their respective owners.

**BOARD PHOTO**



## PERFORMANCE SUMMARY Specifications are at $T_A = 25^\circ\text{C}$

SYMBOL	PARAMETER	CONDITIONS	MIN	TYP	MAX	UNITS
$V_{IN}$	Input Supply Range		13		28	V
$f_{SW}$	Switching Frequency			1.2		MHz
$V_{OUT}$	Output Voltage		-11.75	-12	-12.25	V
$I_{OUT}$	Output Current	$V_{IN} = 13\text{V}$	0		-2.2	A
$I_{OUT}$	Output Current	$V_{IN} = 28\text{V}$	0		-2.5	A
$V_{OUT(AC)}$	Output Ripple (across C23/C30)	$V_{IN} = 28\text{V}, I_{OUT} = 2.5\text{A}, 20\text{MHz}$		30		mV <sub>P-P</sub>
$\eta$	Efficiency	$V_{IN} = 28\text{V}, I_{OUT} = 2.5\text{A}$		88		%

## QUICK START PROCEDURE

Demo circuit 2899A is an easy way to evaluate the performance of the LTM4655. Refer to Figure 1 for proper measurement equipment setup, and follow the procedure below:

1. With power off, connect the input power supply “+” to  $V_{IN1}$  and  $V_{IN2}$  and “-” to GND1 and GND2. Connect the loads from  $V_{OUT1}^+$  to  $V_{OUT1}^-$ , and  $V_{OUT2}^+$  to  $V_{OUT2}^-$ .
2. Set voltage of the DC power supply at 14V. Turn on the power at the input.  
NOTE: Make sure that the input voltage does not exceed 28V.
3. Check for the proper output voltage between  $V_{OUT1}^+$  and  $V_{OUT1}^-$  ( $V_{OUT1}^- = -12\text{V}$ ). Check for the proper output voltage between  $V_{OUT2}^+$  and  $V_{OUT2}^-$  ( $V_{OUT2}^- = -12\text{V}$ ).

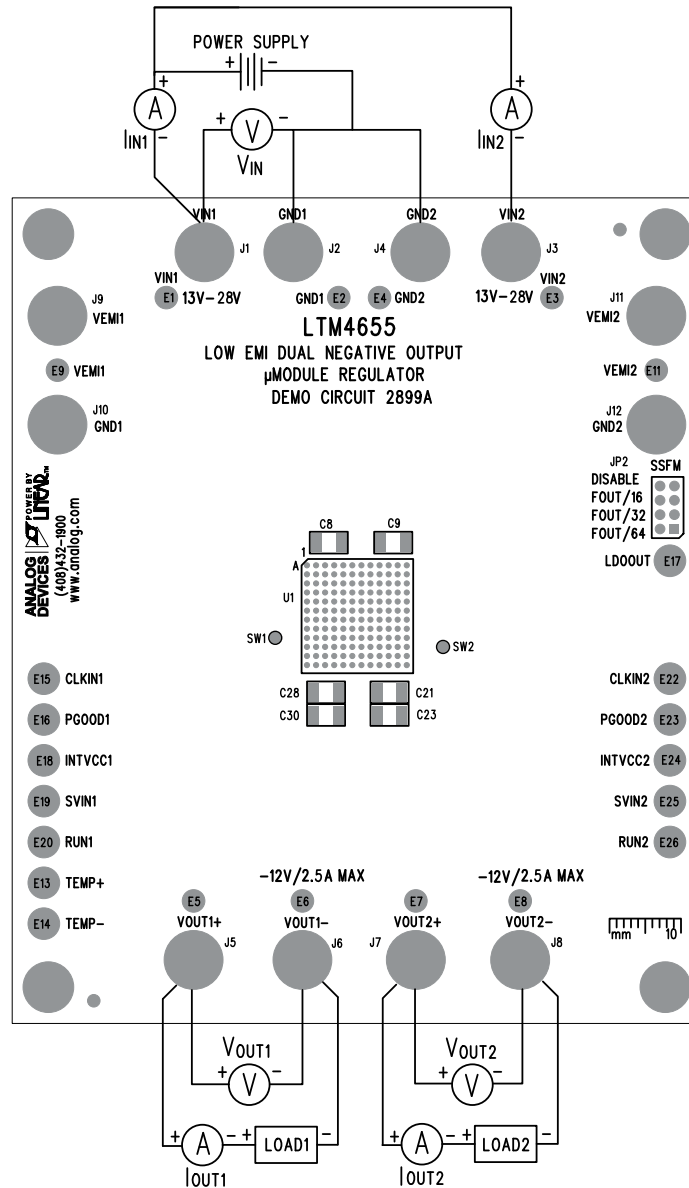
NOTE: If there is no output, or output voltage value is out of the spec, temporarily disconnect the load to make sure that the load is not set too high.

NOTE: The circuit features frequency foldback to protect the power switches during a fault or output current overload.

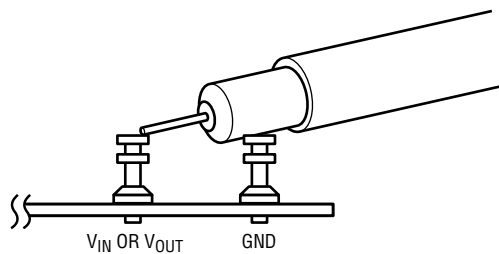
4. Once the proper output voltage at each channel is established, adjust the load within the operating range and measure the output voltage regulation, ripple voltage, efficiency and other parameters.

NOTE: When measuring the input or output voltage ripple, care must be taken to avoid a long ground lead on the oscilloscope probe. Measure the input or output voltage ripple by touching the probe tip directly across the  $V_{IN1}$  or  $V_{IN2}$  and GND terminals,  $V_{OUT1}^+$  and  $V_{OUT1}^-$  terminals, or  $V_{OUT2}^+$  and  $V_{OUT2}^-$  terminals. See Figure 2 for proper scope probe technique.

**QUICK START PROCEDURE**



**Figure 1. DC2899A Proper Equipment Setup**



**Figure 2. Measuring Input or Output Ripple**

## QUICK START PROCEDURE

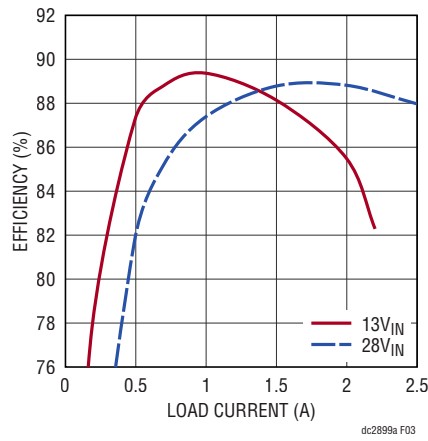


Figure 3. DC2899A Output Efficiency vs Load Current ( T<sub>A</sub> = 25°C)

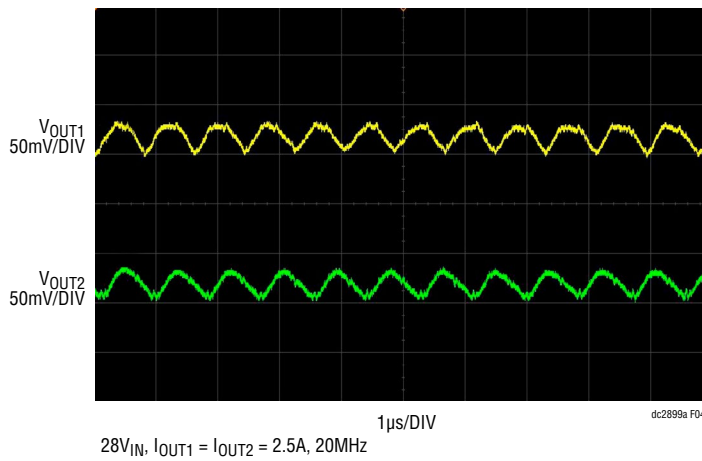


Figure 4. DC2899A Output Ripple

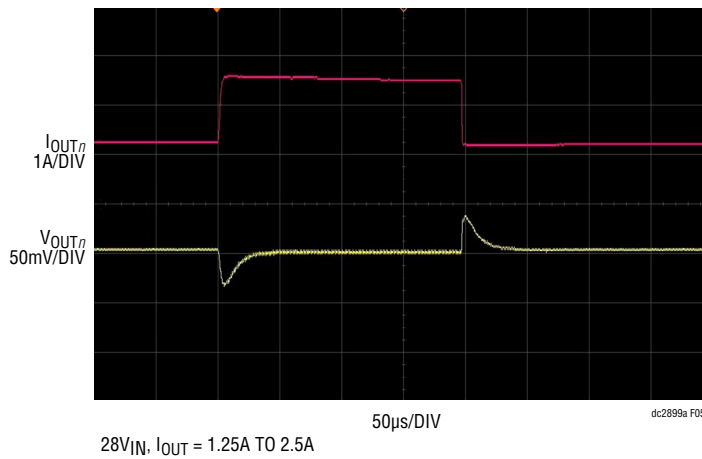


Figure 5. DC2899A Transient Response

**QUICK START PROCEDURE**

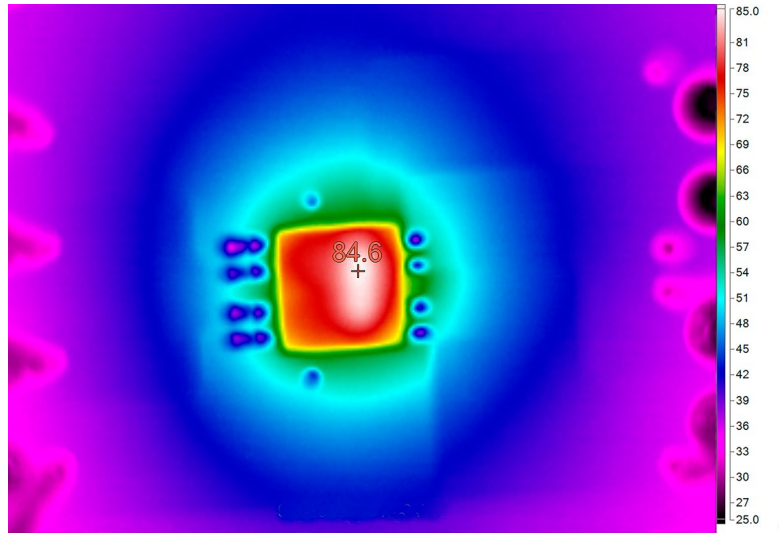


Figure 6. DC2899A Thermal Performance ( $14V_{IN}$ ,  $I_{OUT1} = I_{OUT2} = 1.8A$ ,  $T_A = 25^{\circ}C$ , Free Air)

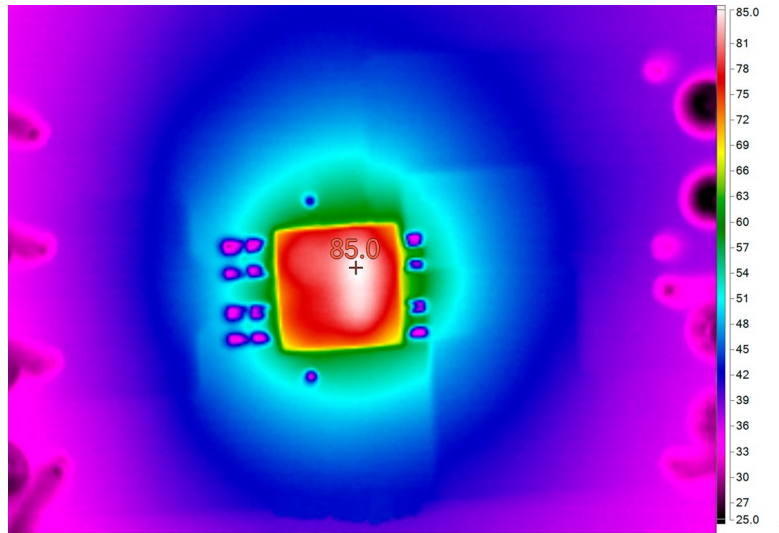
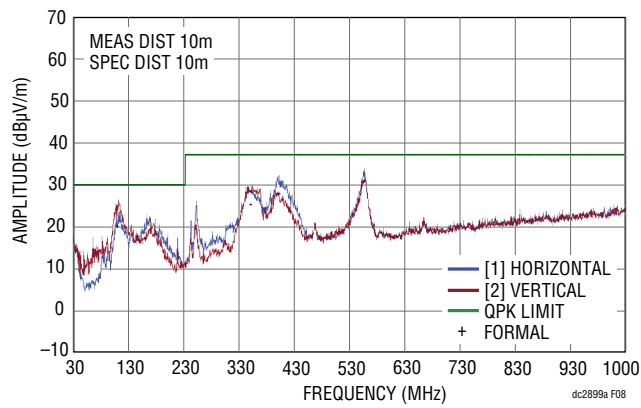


Figure 7. DC2899A Thermal Performance ( $24V_{IN}$ ,  $I_{OUT1} = I_{OUT2} = 2.1A$ ,  $T_A = 25^{\circ}C$ , Free Air)

## QUICK START PROCEDURE



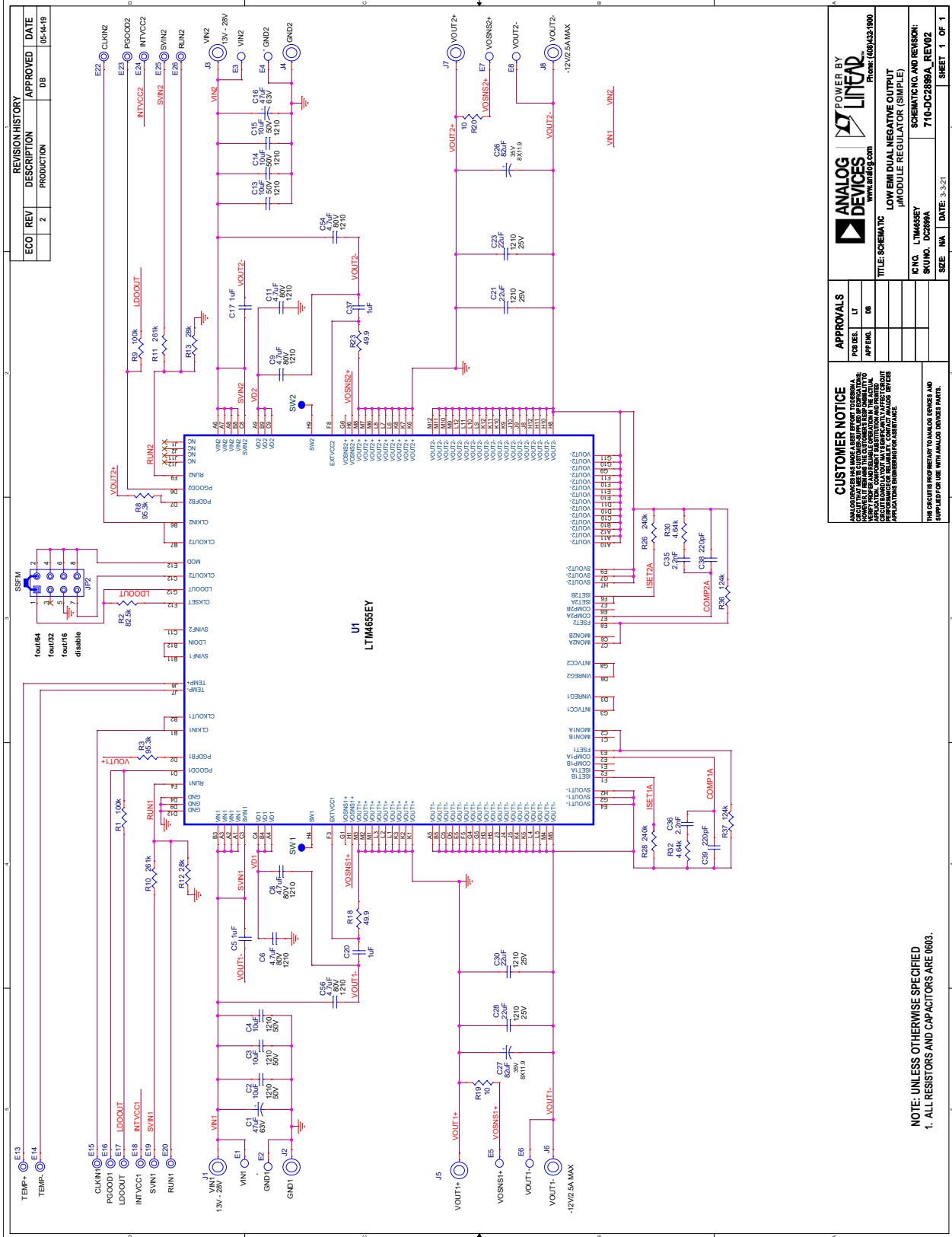
**Figure 8. Radiated Emissions Scan of the LTM4655. Producing  $-12V_{OUT}$  at 4A (2 Channels), from  $12V_{IN}$ . DC2899A Hardware.  $f_{SW} = 700kHz$ . Measured in a 10m Chamber. Peak Detect Method**

## PARTS LIST

ITEM	QTY	REFERENCE	PART DESCRIPTION	MANUFACTURER/PART NUMBER
<b>Required Circuit Components</b>				
1	2	C1, C16	CAP, 47 $\mu$ F, ALUM POLY HYB, 63V, 20%, SMD 10mm $\times$ 10.5mm, AEC-Q200, HVP SERIES	SUN ELECTRONIC INDUSTRIES CORP, 63HVP47M+P
2	6	C2-C4, C13-C15	CAP, 10 $\mu$ F, X7R, 50V, 10%, 1210, NO SUBS. ALLOWED	MURATA, GRM32ER71H106KA12L
3	4	C5, C17, C20, C37	CAP, 1 $\mu$ F, X5R, 50V, 10%, 0603	AVX, 06035D105KAT2A
4	6	C6, C8, C9, C11, C54, C56	CAP, 4.7 $\mu$ F, X7R, 80V, 10%, 1210	MURATA, GRM32ER71K475KE14L
5	4	C21, C23, C28, C30	CAP, 22 $\mu$ F, X7R, 25V, 10%, 1210	AVX, 12103C226KAT2A
6	2	C26, C27	CAP, 82 $\mu$ F, ALUM, OS-CON, 35V, 20%, SMD 8mm $\times$ 11.9mm, E12, SVPF SERIES	PANASONIC, 35SVPF82M
7	2	C35, C36	CAP, 2200pF, X7R, 50V, 10%, 0603	AVX, 06035C222KAT2A
8	2	C38, C39	CAP, 220pF, X7R, 50V, 10%, 0603	AVX, 06035C221KAT2A
9	2	R1, R9	RES., 100k, 1%, 1/10W, 0603, AEC-Q200	VISHAY, CRCW0603100KFKEA
10	1	R2	RES., 82.5k, 1%, 1/10W, 0603, AEC-Q200	PANASONIC, ERJ3EKF8252V
11	2	R3, R8	RES., 95.3k, 1%, 1/10W, 0603, AEC-Q200	PANASONIC, ERJ3EKF9532V
12	2	R10, R11	RES., 261k, 1%, 1/10W, 0603, AEC-Q200	NIC, NRC06F2613TRF
13	2	R12, R13	RES., 28k, 1%, 1/10W, 0603, AEC-Q200	PANASONIC, ERJ3EKF2802V
14	2	R18, R23	RES., 49.9 $\Omega$ , 1%, 1/10W, 0603, AEC-Q200	VISHAY, CRCW060349R9FKEA
15	2	R19, R20	RES., 10 $\Omega$ , 1%, 1/10W, 0603	VISHAY, CRCW060310R0FKEA
16	2	R26, R28	RES., 240k, 1%, 1/10W, 0603	VISHAY, CRCW0603240KFKEA
17	2	R30, R32	RES., 4.64k, 1%, 1/10W, 0603, AEC-Q200	PANASONIC, ERJ3EKF4641V
18	2	R36, R37	RES., 124k, 1%, 1/10W, 0603, AEC-Q200	PANASONIC, ERJ3EKF1243V
19	1	R40	RES., 0 $\Omega$ , 1W, 2512, 7A, AEC-Q200	VISHAY, CRCW25120000Z0EG
20	1	U1	IC, DC/DC REGULATOR, BGA-144 (16mm $\times$ 16mm $\times$ 5.01mm)	ANALOG DEVICES, LTM4655EY#PBF
<b>Additional Demo Board Circuit Components</b>				
1	0	C7, C10, C12, C22, C24, C25, C29, C31, C32, C44-C46, C49-C51, C55	CAP, OPTION, 1210	
2	0	C18, C19, C33, C34, C40, C41	CAP, OPTION, 0603	
3	0	C43, C52	CAP, OPTION, 0805	
4	0	L1, L4	IND., OPTION, 1206	
5	0	L2, L3	IND., OPTION	
6	9	R4, R5, R7, R14, R15, R21, R24, R25, R34	RES., 0 $\Omega$ , 1/10W, 0603, AEC-Q200	VISHAY, CRCW06030000Z0EA
7	0	R6, R16, R17, R22, R27, R29, R31, R33, R35, R42, R45, R46	RES., OPTION, 0603	
8	0	R41	RES., OPTION, 2512	
<b>Hardware</b>				
1	10	E1-E9, E11	TEST POINT, TURRET, 0.064" MTG. HOLE, PCB 0.062" THK	MILL-MAX, 2308-2-00-80-00-00-07-0
2	13	E13-E20, E22-E26	TEST POINT, TURRET, 0.094" MTG. HOLE, PCB 0.062" THK	MILL-MAX, 2501-2-00-80-00-00-07-0
3	12	J1-J12	CONN., BANANA JACK, FEMALE, THT, NON-INSULATED, SWAGE, 0.218"	KEYSTONE, 575-4
4	1	JP2	CONN., HDR, MALE, 2 $\times$ 4, 2mm, VERT, STR, THT	SAMTEC, TMM-104-02-L-D
5	4	MP1-MP4	STANDOFF, NYLON, SNAP-ON, 0.50"	KEYSTONE, 8833
6	1	XJP2	CONN., SHUNT, FEMALE, 2-POS, 2mm	SAMTEC, 2SN-BK-G

# DEMO MANUAL DC2899A

## SIMPLIFIED SCHEMATIC DIAGRAM



REVISION HISTORY		
ECO1	REV 2	DESCRIPTION PRODUCTION
	APPROVED DB	DATE 05-14-19

**ANALOG DEVICES** POWER BY **LINEAR**

www.analog.com Phone: (609)434-9000

**APPROVALS**

FCB DES.	LT
APPRA.	DB

**CUSTOMER NOTICE**  
ANALOG DEVICES HAS MADE A BEST EFFORT TO DESIGN A SCHEMATIC THAT REPRESENTS THE INTENDED FUNCTIONALITY OF THE PRODUCT. THE SCHEMATIC IS NOT A GUARANTEE OF PERFORMANCE OR RELIABILITY. CUSTOMERS SHOULD CONSULT WITH ANALOG DEVICES FOR SPECIFICATIONS AND RECOMMENDATIONS FOR APPLICATIONS. SUBMITTALS OF SCHEMATICS ARE NOT FOR SALE.

**THE SCHEMATIC PROPERTY OF ANALOG DEVICES AND NOT BE REPRODUCED OR TRANSMITTED IN ANY FORM OR BY ANY MEANS, ELECTRONIC OR MECHANICAL, INCLUDING PHOTOCOPYING, RECORDING, OR BY ANY INFORMATION STORAGE AND RETRIEVAL SYSTEM, WITHOUT THE WRITTEN PERMISSION OF ANALOG DEVICES.**

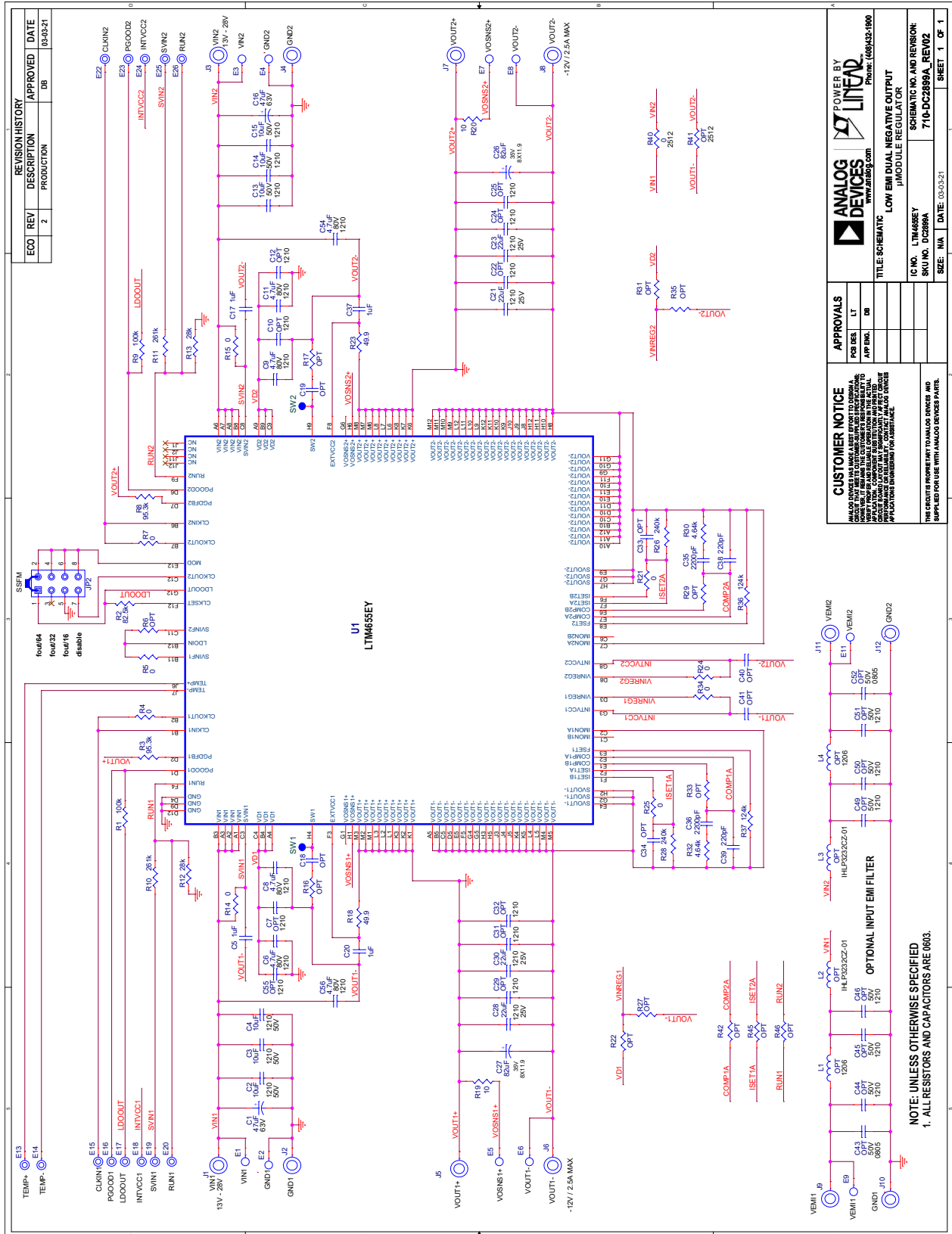
**SK NO. LT1466SEY**  
**SKU NO. DC2899A**  
**SCHEMATIC NO. AND REVISION: 710-DC2899A\_REV02**

SIZE: NA DATE: 3-3-21 SHEET: 1 OF 1

NOTE: UNLESS OTHERWISE SPECIFIED  
1. ALL RESISTORS AND CAPACITORS ARE 0603.



FULL SCHEMATIC DIAGRAM



Information furnished by Analog Devices is believed to be accurate and reliable. However, no responsibility is assumed by Analog Devices for its use, nor for any infringements of patents or other rights of third parties that may result from its use. Specifications subject to change without notice. No license is granted by implication or otherwise under any patent or patent rights of Analog Devices.



## ESD Caution

**ESD (electrostatic discharge) sensitive device.** Charged devices and circuit boards can discharge without detection. Although this product features patented or proprietary protection circuitry, damage may occur on devices subjected to high energy ESD. Therefore, proper ESD precautions should be taken to avoid performance degradation or loss of functionality.

## Legal Terms and Conditions

By using the evaluation board discussed herein (together with any tools, components documentation or support materials, the "Evaluation Board"), you are agreeing to be bound by the terms and conditions set forth below ("Agreement") unless you have purchased the Evaluation Board, in which case the Analog Devices Standard Terms and Conditions of Sale shall govern. Do not use the Evaluation Board until you have read and agreed to the Agreement. Your use of the Evaluation Board shall signify your acceptance of the Agreement. This Agreement is made by and between you ("Customer") and Analog Devices, Inc. ("ADI"), with its principal place of business at One Technology Way, Norwood, MA 02062, USA. Subject to the terms and conditions of the Agreement, ADI hereby grants to Customer a free, limited, personal, temporary, non-exclusive, non-sublicensable, non-transferable license to use the Evaluation Board FOR EVALUATION PURPOSES ONLY. Customer understands and agrees that the Evaluation Board is provided for the sole and exclusive purpose referenced above, and agrees not to use the Evaluation Board for any other purpose. Furthermore, the license granted is expressly made subject to the following additional limitations: Customer shall not (i) rent, lease, display, sell, transfer, assign, sublicense, or distribute the Evaluation Board; and (ii) permit any Third Party to access the Evaluation Board. As used herein, the term "Third Party" includes any entity other than ADI, Customer, their employees, affiliates and in-house consultants. The Evaluation Board is NOT sold to Customer; all rights not expressly granted herein, including ownership of the Evaluation Board, are reserved by ADI. CONFIDENTIALITY. This Agreement and the Evaluation Board shall all be considered the confidential and proprietary information of ADI. Customer may not disclose or transfer any portion of the Evaluation Board to any other party for any reason. Upon discontinuation of use of the Evaluation Board or termination of this Agreement, Customer agrees to promptly return the Evaluation Board to ADI. ADDITIONAL RESTRICTIONS. Customer may not disassemble, decompile or reverse engineer chips on the Evaluation Board. Customer shall inform ADI of any occurred damages or any modifications or alterations it makes to the Evaluation Board, including but not limited to soldering or any other activity that affects the material content of the Evaluation Board. Modifications to the Evaluation Board must comply with applicable law, including but not limited to the RoHS Directive. TERMINATION. ADI may terminate this Agreement at any time upon giving written notice to Customer. Customer agrees to return to ADI the Evaluation Board at that time. LIMITATION OF LIABILITY. THE EVALUATION BOARD PROVIDED HEREUNDER IS PROVIDED "AS IS" AND ADI MAKES NO WARRANTIES OR REPRESENTATIONS OF ANY KIND WITH RESPECT TO IT. ADI SPECIFICALLY DISCLAIMS ANY REPRESENTATIONS, ENDORSEMENTS, GUARANTEES, OR WARRANTIES, EXPRESS OR IMPLIED, RELATED TO THE EVALUATION BOARD INCLUDING, BUT NOT LIMITED TO, THE IMPLIED WARRANTY OF MERCHANTABILITY, TITLE, FITNESS FOR A PARTICULAR PURPOSE OR NON-INFRINGEMENT OF INTELLECTUAL PROPERTY RIGHTS. IN NO EVENT WILL ADI AND ITS LICENSORS BE LIABLE FOR ANY INCIDENTAL, SPECIAL, INDIRECT, OR CONSEQUENTIAL DAMAGES RESULTING FROM CUSTOMER'S POSSESSION OR USE OF THE EVALUATION BOARD, INCLUDING BUT NOT LIMITED TO LOST PROFITS, DELAY COSTS, LABOR COSTS OR LOSS OF GOODWILL. ADI'S TOTAL LIABILITY FROM ANY AND ALL CAUSES SHALL BE LIMITED TO THE AMOUNT OF ONE HUNDRED US DOLLARS (\$100.00). EXPORT. Customer agrees that it will not directly or indirectly export the Evaluation Board to another country, and that it will comply with all applicable United States federal laws and regulations relating to exports. GOVERNING LAW. This Agreement shall be governed by and construed in accordance with the substantive laws of the Commonwealth of Massachusetts (excluding conflict of law rules). Any legal action regarding this Agreement will be heard in the state or federal courts having jurisdiction in Suffolk County, Massachusetts, and Customer hereby submits to the personal jurisdiction and venue of such courts. The United Nations Convention on Contracts for the International Sale of Goods shall not apply to this Agreement and is expressly disclaimed.