



Specifications

Electrical Ratings	50mA @ 12VDC	Dielectric Strength	250Vrms min
Electrical Life	50,000 cycles typical	Insulation Resistance	>100MΩ min @ 500VDC
Contact Resistance	<500mΩ initial max	Operating Temperature	-40°C to 85°C
Actuation Force	180 ± 100gF	Storage Temperature	-40°C to 85°C
Actuator Travel	0.35 mm ± .10mm	Packaging Information	2,000 pieces per reel

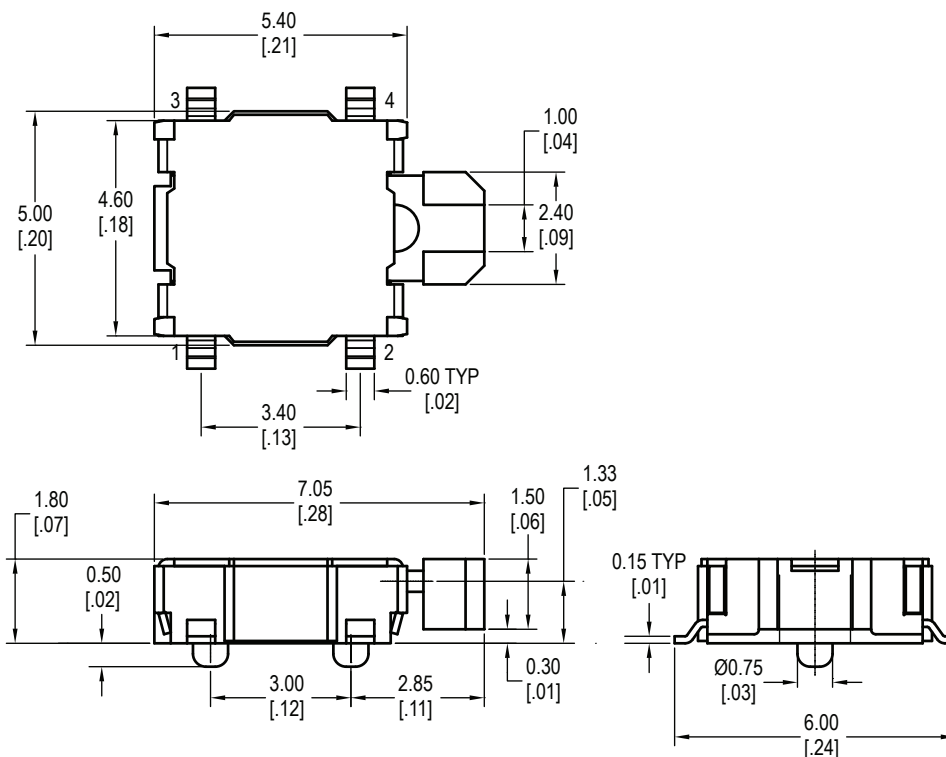
Materials

Actuator	LCP
Housing	LCP
Cover	Stainless Steel
Contacts	Stainless Steel, Silver Clad
Terminals	Copper Alloy, Silver Plated

Ordering Information

1. Series	CS1218	F180
CS1218		
2. Actuation Force	F180 = 180gF	

Dimensions



Schematic & PC Layout

