



Thread and locking adapter, Material: Polyamide PA 6.6, glass-fibre reinforced, Colour: Black

RAL: 9005

Business data

| | |
|--|----------------|
| Article number | 28771.4 |
| Article name | KDS-RGA M20 BK |
| GTIN (EAN) | 4044211234515 |
| Packaging unit | 5 |
| Quantity unit | PC |
| Weight per piece (not including packaging) | 7.2 g |
| Weight per piece (including packaging) | 8 g |
| Unit of weight | G |
| Customs number | 39259020 |
| Country of origin | DE |
| Product description | Cable Entry |
| Colour | Black |

Technical data

Dimensions

| | |
|-----------------------|---------|
| Length | 38 mm |
| Length of wall cutout | 20.3 mm |
| Width | 38 mm |
| Width of wall cutout | 20.3 mm |
| Height | 22.1 mm |
| Installation height | 14.9 mm |

Thread

| | |
|-------------------|---------|
| Thread type | Metric |
| Thread size | 20 mm |
| Thread pitch | 1.5 mm |
| Thread length (L) | 14.9 mm |

Materials

| | |
|---------------------------|---------------|
| Material | Polyamide 6.6 |
| Glass-fibre reinforced | ✓ |
| Flammability class UL 94 | V-0 |
| Working temperature, min. | -40 °C |
| Working temperature, max. | 120 °C |
| Halogen-free | ✓ |
| Silicone-free | ✓ |

Further technical data

| | |
|------------------------|-----------------------------|
| Mounting type | Screws |
| Degree of protection | IP66 |
| NEMA Type | 1, 12, 4x (indoor use only) |
| Torque for the locknut | 3 Nm |

Environmental Product Compliance

| | |
|--------------------------------|------------|
| REACH Conform | yes |
| REACH Reference date | 2023-01-17 |
| REACH Candidate Substance Note | No |
| RoHS Conform | yes |

Approvals

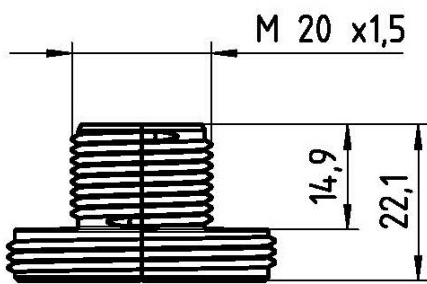
cUL Recognized

| | |
|-----------------|-----------------|
| cUL approval | C22.2 No. 14-18 |
| cUL File Number | E489821 |
| cUL Recognized | 1 |

UL Recognized

| | |
|----------------|-----------------------------|
| UL approval | UL 508A |
| UL File Number | E489821 |
| UL Recognized | 1 |
| UL Type Rating | 1, 12, 4x (indoor use only) |

Media



Accessories

Small Seals



Seal, Mounting type: Plug in, Length x width: 20.3 mm, Max. cable diameter: 7 mm, IP 66, Colour: Grey

| Article number | Article name | GTIN (EAN) | Packaging unit |
|----------------|---------------|---------------|----------------|
| <u>28567.6</u> | KDS-DE 6-7 GR | 4044211211059 | 10 ST |



Seal, Mounting type: Plug in, Length x width: 20.3 mm, Max. cable diameter: 8 mm, IP 66, Colour: Grey

| Article number | Article name | GTIN (EAN) | Packaging unit |
|----------------|---------------|---------------|----------------|
| <u>28568.6</u> | KDS-DE 7-8 GR | 4044211211066 | 10 ST |



Seal, Mounting type: Plug in, Length x width: 20.3 mm, Max. cable diameter: 9 mm, IP 66, Colour: Grey

| Article number | Article name | GTIN (EAN) | Packaging unit |
|----------------|---------------|---------------|----------------|
| <u>28569.6</u> | KDS-DE 8-9 GR | 4044211211073 | 10 ST |



Seal, Mounting type: Plug in, Length x width: 20.3 mm, Max. cable diameter: 10 mm, IP 66, Colour: Grey

| Article number | Article name | GTIN (EAN) | Packaging unit |
|----------------|----------------|---------------|----------------|
| <u>28570.6</u> | KDS-DE 9-10 GR | 4044211211080 | 10 ST |



Seal, Mounting type: Plug in, Length x width: 20.3 mm, Max. cable diameter: 11 mm, IP 66, Colour: Grey

| Article number | Article name | GTIN (EAN) | Packaging unit |
|----------------|-----------------|---------------|----------------|
| <u>28571.6</u> | KDS-DE 10-11 GR | 4044211211097 | 10 ST |



Seal, Mounting type: Plug in, Length x width: 20.3 mm, Max. cable diameter: 12 mm, IP 66, Colour: Grey

| Article number | Article name | GTIN (EAN) | Packaging unit |
|----------------|-----------------|---------------|----------------|
| <u>28572.6</u> | KDS-DE 11-12 GR | 4044211211103 | 10 ST |

Small Seals



Seal, Mounting type: Plug in, Length x width: 20.3 mm, Max. cable diameter: 13 mm, IP 66, Colour: Grey

| Article number | Article name | GTIN (EAN) | Packaging unit |
|-------------------------|-----------------|---------------|----------------|
| 28573.6 | KDS-DE 12-13 GR | 4044211215224 | 10 ST |



Seal, Mounting type: Plug in, Length x width: 20.3 mm, Max. cable diameter: 3 mm, IP 66, Colour: Grey

| Article number | Article name | GTIN (EAN) | Packaging unit |
|-------------------------|---------------|---------------|----------------|
| 28563.6 | KDS-DE 2-3 GR | 4044211211011 | 10 ST |



Seal, Mounting type: Plug in, Length x width: 20.3 mm, Max. cable diameter: 4 mm, IP 66, Colour: Grey

| Article number | Article name | GTIN (EAN) | Packaging unit |
|-------------------------|---------------|---------------|----------------|
| 28564.6 | KDS-DE 3-4 GR | 4044211211028 | 10 ST |



Seal, Mounting type: Plug in, Length x width: 20.3 mm, Max. cable diameter: 5 mm, IP 66, Colour: Grey

| Article number | Article name | GTIN (EAN) | Packaging unit |
|-------------------------|---------------|---------------|----------------|
| 28565.6 | KDS-DE 4-5 GR | 4044211211035 | 10 ST |



Seal, Mounting type: Plug in, Length x width: 20.3 mm, Max. cable diameter: 6 mm, IP 66, Colour: Grey

| Article number | Article name | GTIN (EAN) | Packaging unit |
|-------------------------|---------------|---------------|----------------|
| 28566.6 | KDS-DE 5-6 GR | 4044211211042 | 10 ST |



Seal, Mounting type: Plug in, Length x width: 20.3 mm, Max. cable diameter: 5 mm, IP 66, Colour: Grey

| Article number | Article name | GTIN (EAN) | Packaging unit |
|-------------------------|-----------------|---------------|----------------|
| 28595.6 | KDS-DE 2X4-5 GR | 4044211215682 | 10 ST |



Seal, Mounting type: Plug in, Length x width: 20.3 mm, Max. cable diameter: 6 mm, IP 66, Colour: Grey

| Article number | Article name | GTIN (EAN) | Packaging unit |
|-------------------------|-----------------|---------------|----------------|
| 28596.6 | KDS-DE 2X5-6 GR | 4044211215699 | 10 ST |

28771.4 KDS-RGA M20 BK

Small Seals



Seal, Mounting type: Plug in, Length x width: 20.3 mm, Max. cable diameter: 3 mm, IP 66, Colour: Grey

| Article number | Article name | GTIN (EAN) | Packaging unit |
|----------------|-----------------|---------------|----------------|
| <u>28597.6</u> | KDS-DE 4X2-3 GR | 4044211215705 | 10 ST |



Seal, Mounting type: Plug in, Length x width: 20.3 mm, IP 66, Colour: Grey

| Article number | Article name | GTIN (EAN) | Packaging unit |
|----------------|-----------------|---------------|----------------|
| <u>28599.6</u> | KDS-DE/1XASI GR | 4044211215729 | 10 ST |



Seal, Mounting type: Plug in, Length x width: 20.3 mm, IP 66, Colour: Black

| Article number | Article name | GTIN (EAN) | Packaging unit |
|----------------|-----------------|---------------|----------------|
| <u>28560.4</u> | KDS-DE/2XASI BK | 4044211215675 | 10 ST |



Seal dummy, Mounting type: Plug in, Length x width: 20.3 mm, IP 66, Colour: Grey

| Article number | Article name | GTIN (EAN) | Packaging unit |
|----------------|--------------|---------------|----------------|
| <u>28561.6</u> | KDS-DE/B GR | 4044211211004 | 10 ST |



Seal, Mounting type: Plug in, Length x width: 20.3 mm, Max. cable diameter: 2 mm, IP 66, Colour: Grey

| Article number | Article name | GTIN (EAN) | Packaging unit |
|----------------|-----------------|---------------|----------------|
| <u>28562.6</u> | KDS-DE 1,5-2 GR | 4044211209988 | 10 ST |



Seal, Mounting type: Plug in, Length x width: 20.3 mm, Max. cable diameter: 6.5 mm, IP 66, Colour: Black

| Article number | Article name | GTIN (EAN) | Packaging unit |
|----------------|-----------------|---------------|----------------|
| <u>28682.4</u> | KDS-DE 2X6,5 BK | 4044211219536 | 10 ST |



Seal, Mounting type: Plug in, Length x width: 20.3 mm, IP 66, Colour: Grey

| Article number | Article name | GTIN (EAN) | Packaging unit |
|----------------|-----------------|---------------|----------------|
| <u>28600.6</u> | KDS-DE/2XASI GR | 4044211215736 | 10 ST |

Small Seals



Seal, Mounting type: Plug in, Length x width: 20.3 mm, Max. cable diameter: 6.5 mm, IP 66, Colour: Grey

| Article number | Article name | GTIN (EAN) | Packaging unit |
|----------------|-----------------|---------------|----------------|
| <u>28607.6</u> | KDS-DE 2X6,5 GR | 4044211216238 | 10 ST |



Seal, Mounting type: Plug in, Length x width: 20.3 mm, Max. cable diameter: 11 mm, IP 66, Colour: Black

| Article number | Article name | GTIN (EAN) | Packaging unit |
|----------------|-----------------|---------------|----------------|
| <u>28530.4</u> | KDS-DE 10-11 BK | 4044211210960 | 10 ST |



Seal, Mounting type: Plug in, Length x width: 20.3 mm, Max. cable diameter: 12 mm, IP 66, Colour: Black

| Article number | Article name | GTIN (EAN) | Packaging unit |
|----------------|-----------------|---------------|----------------|
| <u>28531.4</u> | KDS-DE 11-12 BK | 4044211210977 | 10 ST |



Seal, Mounting type: Plug in, Length x width: 20.3 mm, Max. cable diameter: 13 mm, IP 66, Colour: Black

| Article number | Article name | GTIN (EAN) | Packaging unit |
|----------------|-----------------|---------------|----------------|
| <u>28532.4</u> | KDS-DE 12-13 BK | 4044211210984 | 10 ST |



Seal, Mounting type: Plug in, Length x width: 20.3 mm, Max. cable diameter: 11 mm, IP 66, Colour: Black

| Article number | Article name | GTIN (EAN) | Packaging unit |
|----------------|------------------|---------------|----------------|
| <u>28553.4</u> | KDS-DE/K 2-11 BK | 4044211216092 | 10 ST |



Seal, Mounting type: Plug in, Length x width: 20.3 mm, Max. cable diameter: 5 mm, IP 66, Colour: Black

| Article number | Article name | GTIN (EAN) | Packaging unit |
|----------------|-----------------|---------------|----------------|
| <u>28555.4</u> | KDS-DE 2X4-5 BK | 4044211215620 | 10 ST |



Seal, Mounting type: Plug in, Length x width: 20.3 mm, Max. cable diameter: 6 mm, IP 66, Colour: Black

| Article number | Article name | GTIN (EAN) | Packaging unit |
|----------------|-----------------|---------------|----------------|
| <u>28556.4</u> | KDS-DE 2X5-6 BK | 4044211215637 | 10 ST |

28771.4 KDS-RGA M20 BK

Small Seals



Seal, Mounting type: Plug in, Length x width: 20.3 mm, Max. cable diameter: 3 mm, IP 66, Colour: Black

| Article number | Article name | GTIN (EAN) | Packaging unit |
|-------------------------|-----------------|---------------|----------------|
| 28557.4 | KDS-DE 4X2-3 BK | 4044211215644 | 10 ST |



Seal, Mounting type: Plug in, Length x width: 20.3 mm, IP 66, Colour: Black

| Article number | Article name | GTIN (EAN) | Packaging unit |
|-------------------------|-----------------|---------------|----------------|
| 28559.4 | KDS-DE/1XASI BK | 4044211215668 | 10 ST |



Seal dummy, Mounting type: Plug in, Length x width: 20.3 mm, IP 66, Colour: Black

| Article number | Article name | GTIN (EAN) | Packaging unit |
|-------------------------|--------------|---------------|----------------|
| 28520.4 | KDS-DE/B BK | 4044211210878 | 10 ST |



Seal, Mounting type: Plug in, Length x width: 20.3 mm, Max. cable diameter: 2 mm, IP 66, Colour: Black

| Article number | Article name | GTIN (EAN) | Packaging unit |
|-------------------------|-----------------|---------------|----------------|
| 28521.4 | KDS-DE 1,5-2 BK | 4044211210007 | 10 ST |



Seal, Mounting type: Plug in, Length x width: 20.3 mm, Max. cable diameter: 3 mm, IP 66, Colour: Black

| Article number | Article name | GTIN (EAN) | Packaging unit |
|-------------------------|---------------|---------------|----------------|
| 28522.4 | KDS-DE 2-3 BK | 4044211210885 | 10 ST |



Seal, Mounting type: Plug in, Length x width: 20.3 mm, Max. cable diameter: 4 mm, IP 66, Colour: Black

| Article number | Article name | GTIN (EAN) | Packaging unit |
|-------------------------|---------------|---------------|----------------|
| 28523.4 | KDS-DE 3-4 BK | 4044211210892 | 10 ST |



Seal, Mounting type: Plug in, Length x width: 20.3 mm, Max. cable diameter: 5 mm, IP 66, Colour: Black

| Article number | Article name | GTIN (EAN) | Packaging unit |
|-------------------------|---------------|---------------|----------------|
| 28524.4 | KDS-DE 4-5 BK | 4044211210908 | 10 ST |

28771.4 KDS-RGA M20 BK

Small Seals



Seal, Mounting type: Plug in, Length x width: 20.3 mm, Max. cable diameter: 6 mm, IP 66, Colour: Black

| Article number | Article name | GTIN (EAN) | Packaging unit |
|----------------|---------------|---------------|----------------|
| <u>28525.4</u> | KDS-DE 5-6 BK | 4044211210915 | 10 ST |



Seal, Mounting type: Plug in, Length x width: 20.3 mm, Max. cable diameter: 7 mm, IP 66, Colour: Black

| Article number | Article name | GTIN (EAN) | Packaging unit |
|----------------|---------------|---------------|----------------|
| <u>28526.4</u> | KDS-DE 6-7 BK | 4044211210922 | 10 ST |



Seal, Mounting type: Plug in, Length x width: 20.3 mm, Max. cable diameter: 8 mm, IP 66, Colour: Black

| Article number | Article name | GTIN (EAN) | Packaging unit |
|----------------|---------------|---------------|----------------|
| <u>28527.4</u> | KDS-DE 7-8 BK | 4044211210939 | 10 ST |



Seal, Mounting type: Plug in, Length x width: 20.3 mm, Max. cable diameter: 9 mm, IP 66, Colour: Black

| Article number | Article name | GTIN (EAN) | Packaging unit |
|----------------|---------------|---------------|----------------|
| <u>28528.4</u> | KDS-DE 8-9 BK | 4044211210946 | 10 ST |



Seal, Mounting type: Plug in, Length x width: 20.3 mm, Max. cable diameter: 10 mm, IP 66, Colour: Black

| Article number | Article name | GTIN (EAN) | Packaging unit |
|----------------|----------------|---------------|----------------|
| <u>28529.4</u> | KDS-DE 9-10 BK | 4044211210953 | 10 ST |

Separable locknut

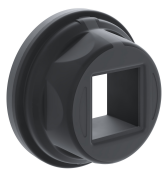


Separated counter nut, Thread type: metric, Material: PA 6.6, Colour: Black

| Article number | Article name | GTIN (EAN) | Packaging unit |
|----------------|--------------|---------------|----------------|
| <u>28616.4</u> | KDS-GM 20 BK | 4044211208998 | 10 ST |

##INVERSE##CONTA-CABLE

28771.4 KDS-RGA M20 BK



Round cable entry, Material: polyamide PA 6.6, glass-fibre reinforced | TPE, Colour: Black

| Article number | Article name | GTIN (EAN) | Packaging unit |
|----------------|----------------|---------------|----------------|
| <u>28770.4</u> | KDS-R 20-32 BK | 4044211234508 | 5 ST |

Sheet-metal puncher



-

| Article number | Article name | GTIN (EAN) | Packaging unit |
|----------------|------------------|---------------|----------------|
| <u>28754.0</u> | BL-VA KDS-KV M20 | 4044211222062 | 1 ST |



Sheet metal punch for round cutouts, Cutout diameter: 20.4 mm, Maximum wall thickness: 2.0 mm for S 235 sheet metal, Material: steel

| Article number | Article name | GTIN (EAN) | Packaging unit |
|----------------|---------------|---------------|----------------|
| <u>28746.0</u> | BL KDS-KV M20 | 4044211221997 | 1 ST |