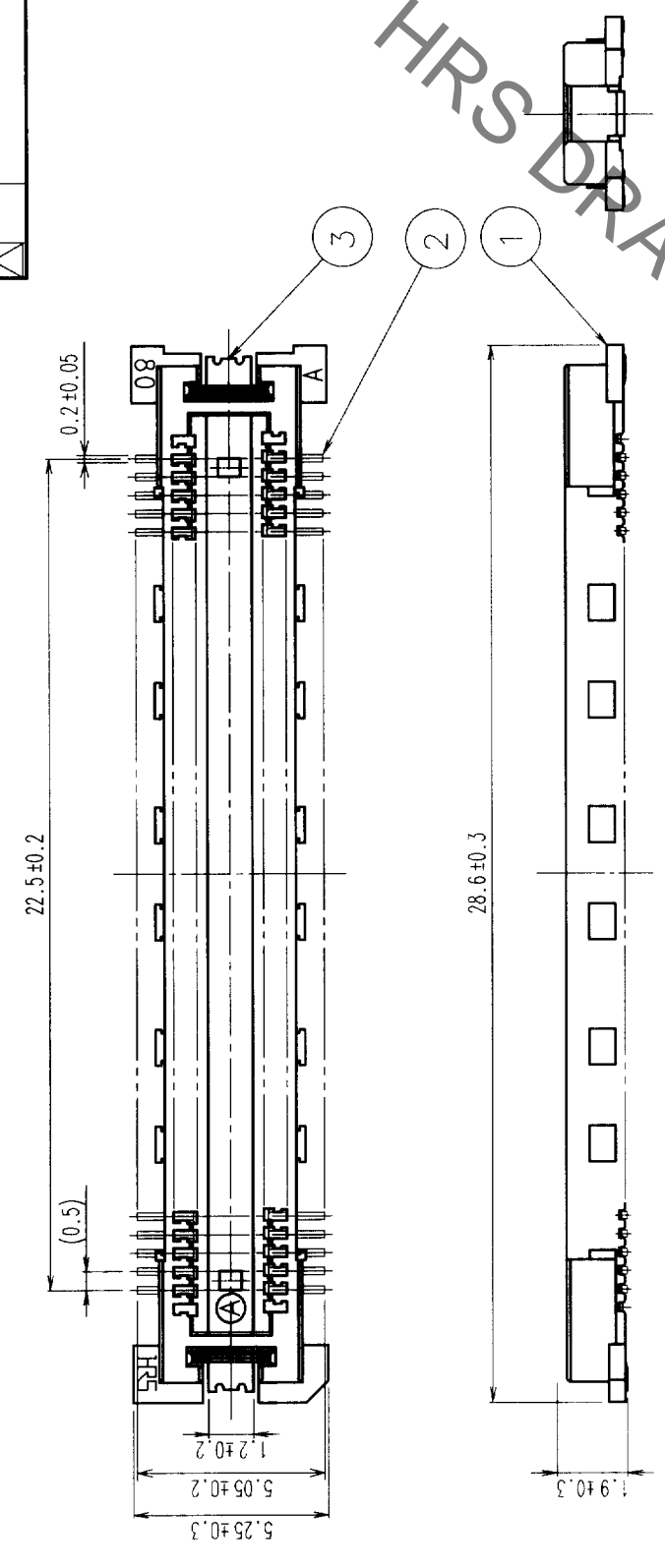
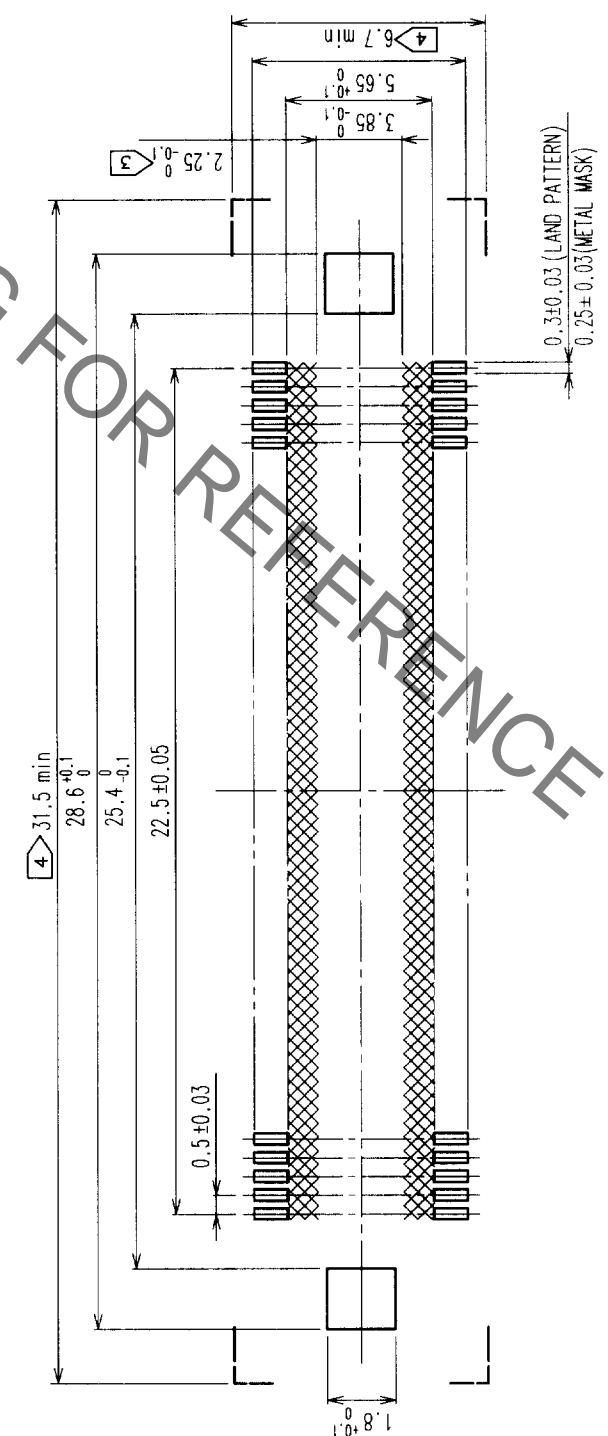


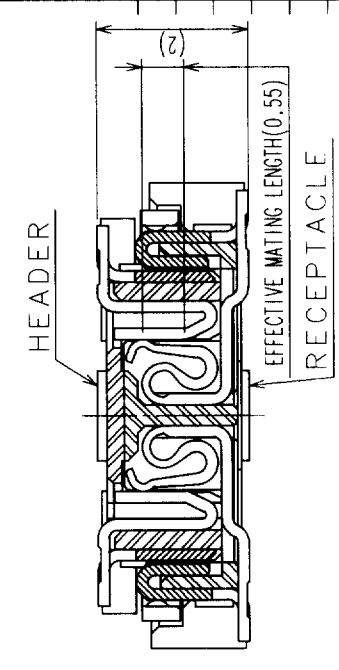
COUNT	DESCRIPTION OF REVISIONS	BY	CHKD	DATE	COUNT	DESCRIPTION OF REVISIONS	BY	CHKD	DATE
△					△				
△					△				
△					△				



RECOMMENDED LAND PATTERN DIMENSION OF PCB



SIGNAL PORTION CROSS SECTION (10:1)



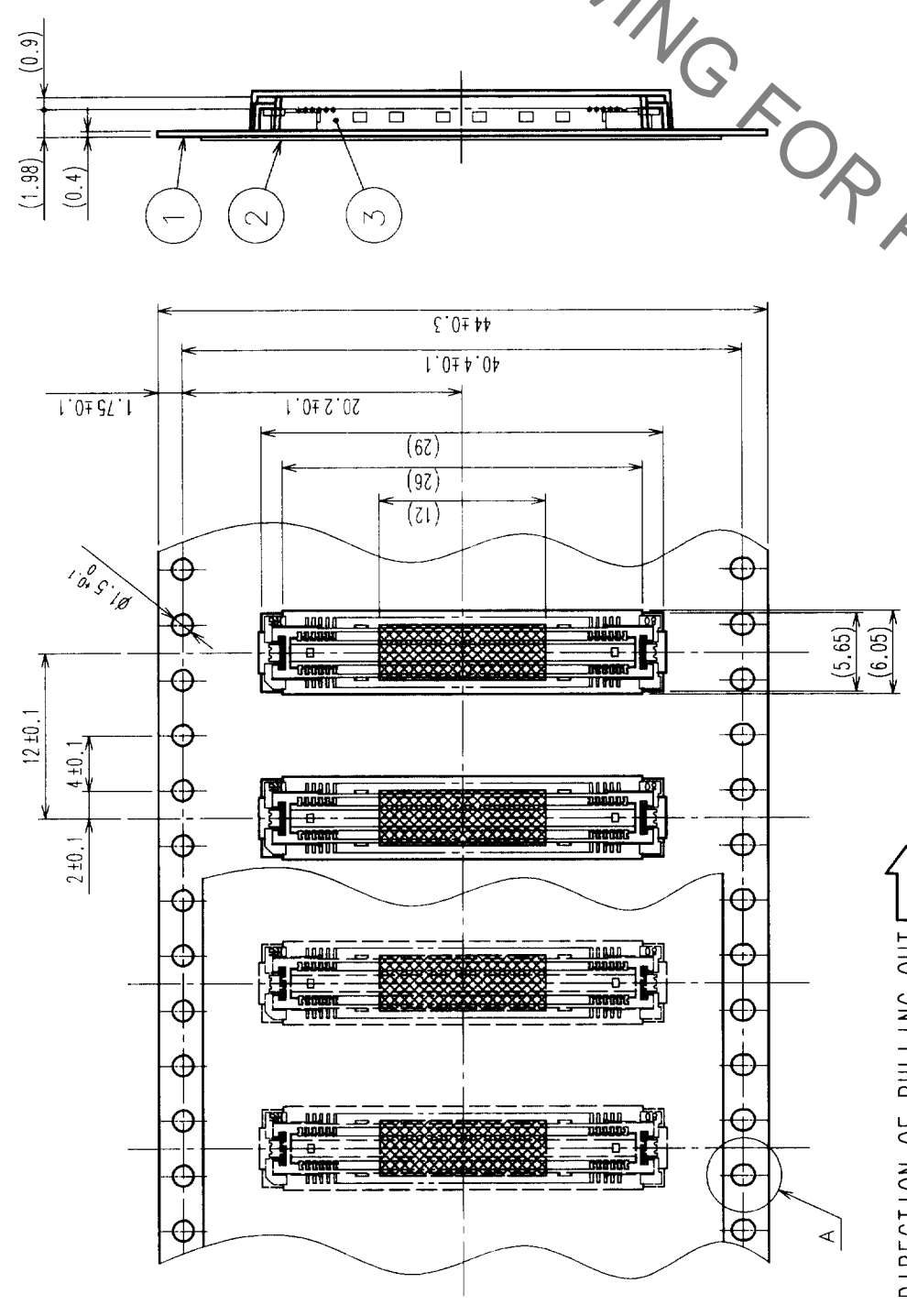
- NOTES
- SMT LEAD-COPLANARITY: 0.1 MAX.
 - THIS PRODUCT HAS NO POLARITY TO PATTERN FOR MOUNTING.
 - MAKE SURE WIDTH OF PATTERN IS WITHIN THAT OF LAND, OR LEAD MAY TOUCH PATTERN. (THIS APPLIES TO HATCHED AREA.)
 - DO NOT MOUNT OTHER DEVICES ONTO [] AREA, OR MATING PAIR CANNOT BE MATED.
 - TO BE EMBOSSED CARRIER TAPED AS SPECIFIED IN SHEET 2.

2	COPPER ALLOY	CONTACT AREA: GOLD (0.1µm) OVER NICKEL
1	LCP	LEAD: GOLD FLASH OVER NICKEL
NO.	MATERIAL	FINISH, REMARKS
		BEIGE UL94V-0
3	PHOSPHOR BRONZE	TIN FINISH
NO.	MATERIAL	FINISH, REMARKS
CODE NO. (OLD)	CL	
DESIGNED	CHECKED	APPROVED
RELEASED		
DRAWN		
PART NO.	FX11LB-92P-SV (22)	
DRAWING NO.	EDC3-152105-02	
SCALE	5 : 1	
UNITS	mm	
CODE NO.	CL573-0053-8-22	
	1/2	

TO	
PCK	

In case of consideration for using Automotive equipment / device which demand high reliability, kindly contact our sales window correspondents.

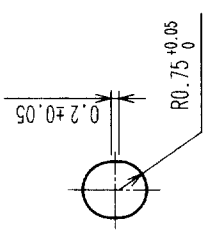
COUNT	DESCRIPTION OF REVISIONS	BY	CHKD	DATE	COUNT	DESCRIPTION OF REVISIONS	BY	CHKD	DATE
△					△				
△					△				
△					△				



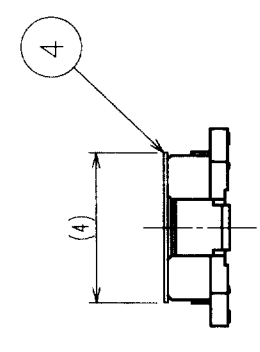
REELED DIMENSION (Free)

THE DIRECTION OF PULLING OUT →

A (5:1)



DETAIL FOR VACUUM PICKUP (5:1)



- NOTES 1 REEL: 1000 CONNECTORS.
- 2 MINIMUM 10 COMPARTMENTS FROM BOTH REEL ENDS REMAIN EMPTY.
- 3 THIS PRODUCT HAS NO POLARITY TO TAPE AND REEL PACKAGING.

2	PET	TOP COVER TAPE	4	POLYIMIDE	(TAPE FOR VACUUM PICKUP)
1	PS	EMBOSSED CARRIER TAPE	3	(CONNECTOR)	
NO.	MATERIAL	FINISH, REMARKS	NO.	MATERIAL	FINISH, REMARKS
CODE NO. (OLD)	CL		DRAWN	DESIGNED	CHECKED
			<i>Hirose Technical M. Nakada</i>	<i>M. Nakada</i>	<i>T. Johanna</i>
			199.10.27	199.10.28	199.10.28
DRAWING FOR PACKING		DRAWING NO.		PART NO.	
SCALE 2:1		EDC3-152105-02		FX11LB-92P-SV(22)	
UNITS (MM)		HRS HIROSE ELECTRIC CO., LTD		CODE NO. CL573-0053-8-22	
		HRS		2	

TO	
PCK	