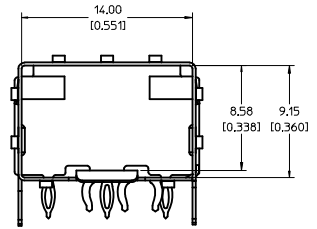
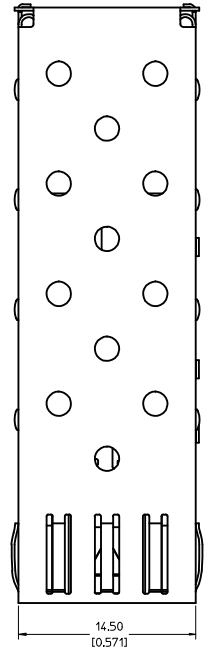
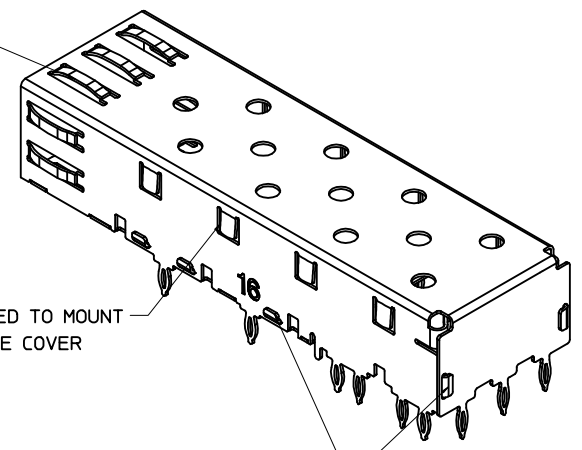


BOTTOM VIEW

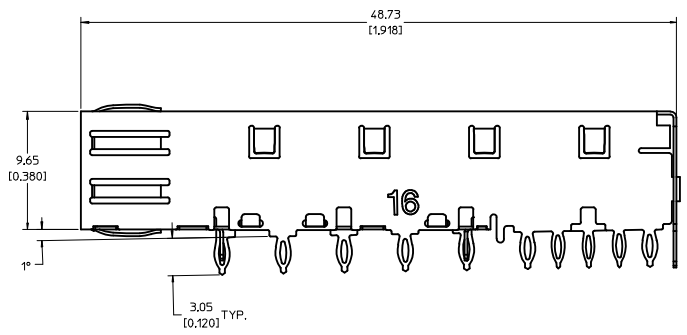


SPRING FINGER GASKET WITH TWO POINTS OF CONTACT. COMPLIES WITH (SFP) MSA BOARD AND BEZEL LOCATIONS.



TABS USED TO MOUNT LIGHT PIPE COVER

ONE PIECE DESIGN SECURLY FASTENED



NOTES:

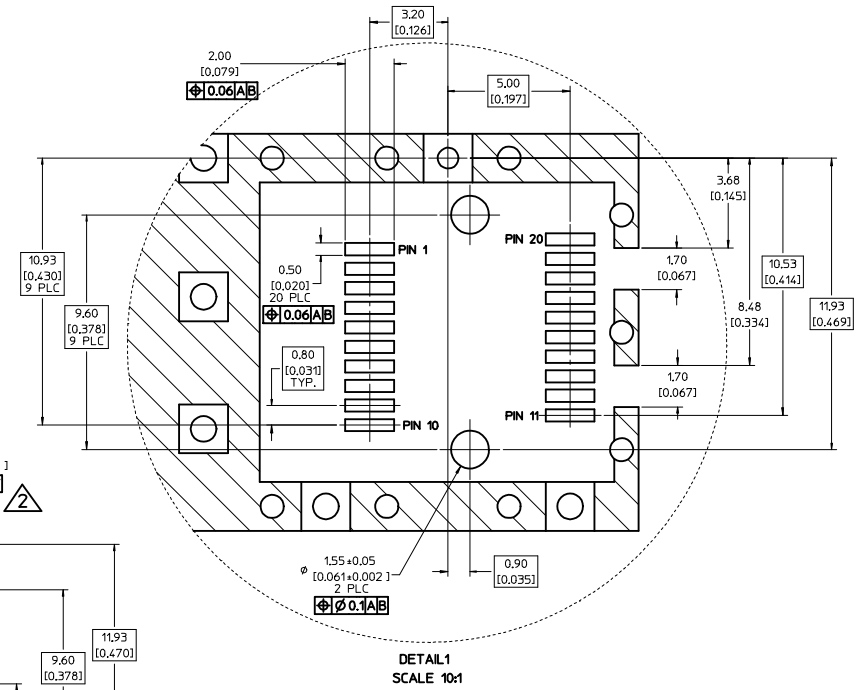
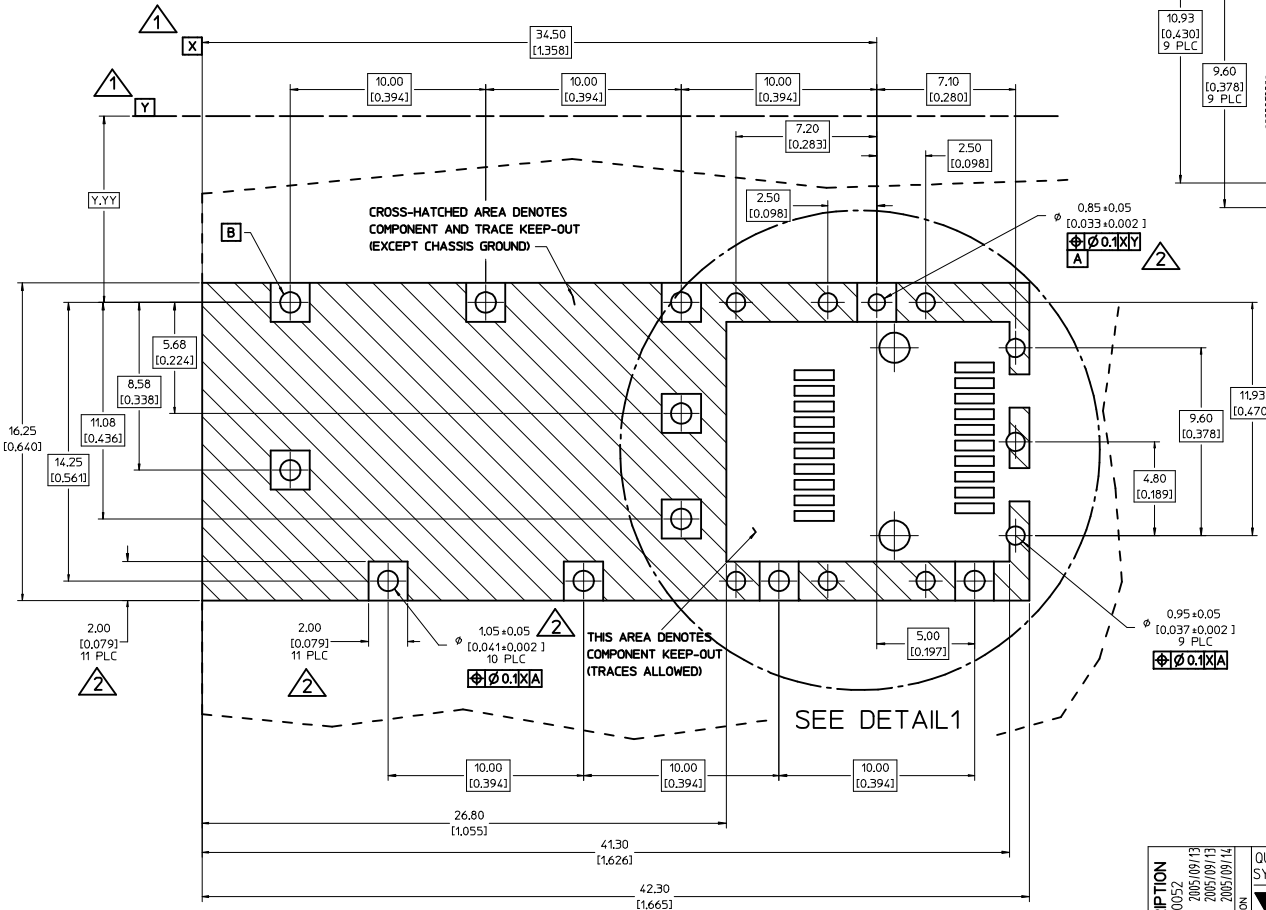
1. PRESS FIT LEGS, 0.120 INCHES LONG. 1.57 [0.062] MINIMUM PCB THICKNESS.
2. THIS CAGE IS FOR SINGLE SIDED USE ONLY.
3. CAN BE USED WITH THE FOLLOWING LIGHT PIPE PART NUMBERS:

747260001 - LIGHT PIPE FROM BACK TO TOP (REFER TO DOCUMENT SD-74726-001)

747260002 - LIGHT PIPE FROM SIDE TO TOP (REFER TO DOCUMENT SD-74726-002)
4. MATERIAL: COPPER ALLOY
PLATING: PRE-PLATED WITH NICKEL
5. THIS PART MEETS THE RESTRICTION OF HAZARDOUS SUBSTANCES IN ELECTRICAL AND ELECTRONIC EQUIPMENT (ROHS) DIRECTIVE (2002/95/EC).

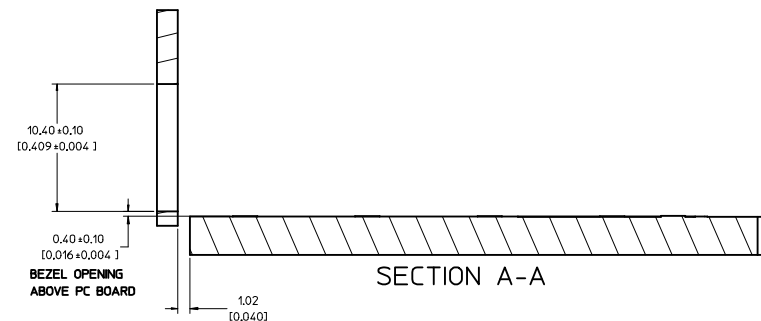
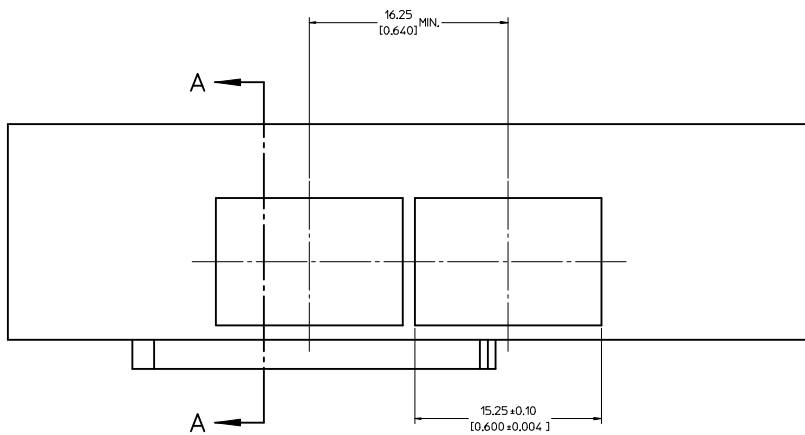
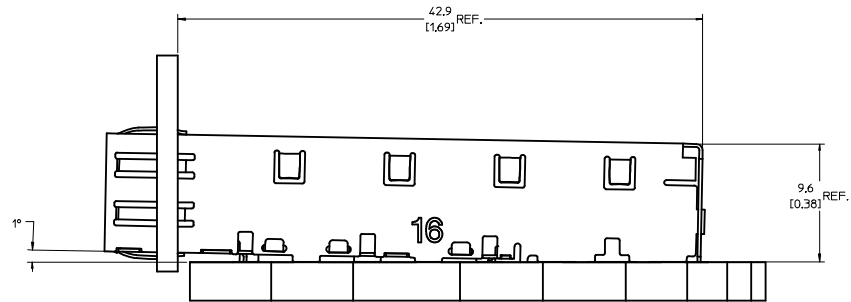
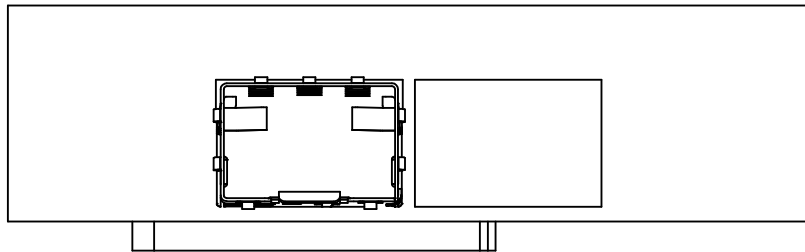
ENTER DESCRIPTION EC NO: USY2006-0052 DRAWN BY: KSI MONSON 2005/09/13 CHECKED BY: CHYD BRUSSELL 2005/09/13 APPROVED BY: APPR: BRUSSELL 2005/09/14	QUALITY SYMBOLS ▽=0 ▽=0	GENERAL TOLERANCES (UNLESS SPECIFIED)		DIMENSION STYLE MM/IN	SCALE 5:1	DESIGN UNITS METRIC	THIRD ANGLE PROJECTION		
		4 PLACES ±--- ±---	3 PLACES ±--- ±.005	2 PLACES ±0.13 ±.01	1 PLACE ±0.25 ±---	TITLE: SFP ONE PIECE CAGE PRESS-FIT (0.120 LEGS) FOR PCI			
		ANGULAR ± 1°				MATERIAL NO. 747370016			
		DRAFT WHERE APPLICABLE MUST REMAIN WITHIN DIMENSIONS				DOCUMENT NO. SD-74737-0016			
SHEET NO. 1 OF 3				MOLEX INCORPORATED					

- 1 DATUM AND BASIC DIMENSIONS ESTABLISHED BY CUSTOMER.
- 2 PADS AND VIAS ARE CHASSIS GROUND.
- 3 HOLE LAYOUT SHOWN IS FOR SINGLE SIDED MOUNTING ONLY.
- 4 CONNECTOR PAD LAYOUT PER SFP MSA, WILL ACCOMMODATE MOLEX CONNECTOR SERIES 74441 OR EQUIVALENT.



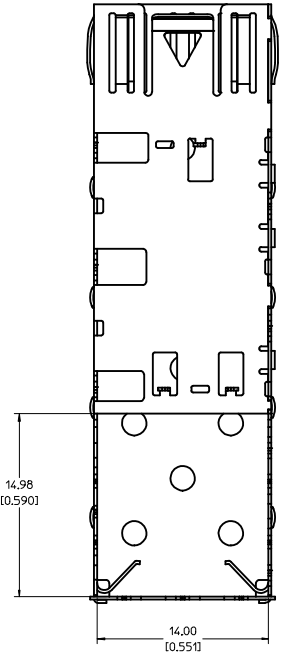
ENTER DESCRIPTION IEC NO.: USY2006-0052 DRAWN BY: KSI MONSO CHYK BRUSSELL APPROV: BRUSSELL DATE: 2005/09/13 DATE: 2005/09/13 DATE: 2005/09/14 REV: A	QUALITY SYMBOLS	GENERAL TOLERANCES (UNLESS SPECIFIED)	DIMENSION STYLE	SCALE	DESIGN UNITS	THIRD ANGLE PROJECTION										
	$\nabla=0$ $\nabla=0$	<table border="1"> <tr> <th>mm</th> <th>INCH</th> </tr> <tr> <td>4 PLACES ±---</td> <td>±---</td> </tr> <tr> <td>3 PLACES ±---</td> <td>±.005</td> </tr> <tr> <td>2 PLACES ±0.13</td> <td>±.01</td> </tr> <tr> <td>1 PLACE ±0.25</td> <td>±---</td> </tr> </table>	mm	INCH	4 PLACES ±---	±---	3 PLACES ±---	±.005	2 PLACES ±0.13	±.01	1 PLACE ±0.25	±---	MM/IN	8:1	METRIC	
	mm	INCH														
	4 PLACES ±---	±---														
3 PLACES ±---	±.005															
2 PLACES ±0.13	±.01															
1 PLACE ±0.25	±---															
DRAFT WHERE APPLICABLE MUST REMAIN WITHIN DIMENSIONS	MATERIAL NO. 747370016	DRAWN BY: KSI MONSO DATE: 2005/09/12 CHECKED BY: BRUSSELL DATE: 2005/09/12 APPROVED BY: BRUSSELL DATE: 2005/09/12	TITLE SFP ONE PIECE CAGE PRESS-FIT (0,120 LEGS) FOR PCI	DOCUMENT NO. SD-74737-0016	MOLEX INCORPORATED	SHEET NO. 2 OF 3										
			THIS DRAWING CONTAINS INFORMATION THAT IS PROPRIETARY TO MOLEX INCORPORATED AND SHOULD NOT BE USED WITHOUT WRITTEN PERMISSION													

20 19 18 17 16 15 14 13 12 11 10 9 8 7 6 5 4 3 2 1

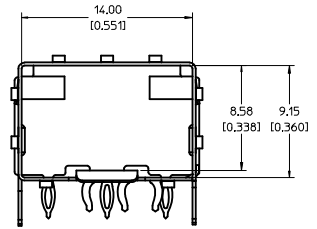
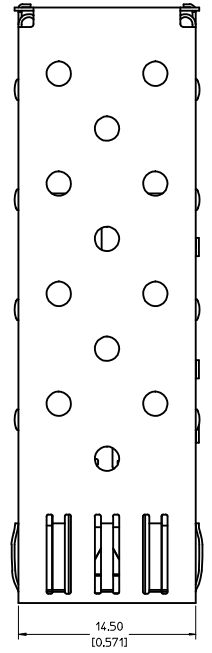


ENTER DESCRIPTION IEC NO: USY2006-0052 DRAWN BY: KSI MONSO 2005/09/13 CHECKED BY: CHYD BRUSSELL 2005/09/13 APPROVED BY: APPR: BRUSSELL 2005/09/14 REV: A	QUALITY SYMBOLS ▽=0 ▽=0	GENERAL TOLERANCES (UNLESS SPECIFIED) <table border="1"> <thead> <tr> <th></th> <th>mm</th> <th>INCH</th> </tr> </thead> <tbody> <tr> <td>4 PLACES</td> <td>±---</td> <td>±---</td> </tr> <tr> <td>3 PLACES</td> <td>±---</td> <td>±.005</td> </tr> <tr> <td>2 PLACES</td> <td>±0.13</td> <td>±.01</td> </tr> <tr> <td>1 PLACE</td> <td>±0.25</td> <td>±---</td> </tr> </tbody> </table> ANGULAR ± 1°		mm	INCH	4 PLACES	±---	±---	3 PLACES	±---	±.005	2 PLACES	±0.13	±.01	1 PLACE	±0.25	±---	DIMENSION STYLE MM/IN	SCALE 5:1	DESIGN UNITS METRIC	THIRD ANGLE PROJECTION
		mm	INCH																		
	4 PLACES	±---	±---																		
	3 PLACES	±---	±.005																		
2 PLACES	±0.13	±.01																			
1 PLACE	±0.25	±---																			
DRAWN BY: KSI MONSO 2005/09/12 CHECKED BY: BRUSSELL 2005/09/12 APPROVED BY: BRUSSELL 2005/09/12	DATE: 2005/09/12 DATE: 2005/09/12 DATE: 2005/09/12	TITLE SFP ONE PIECE CAGE PRESS-FIT (0.120 LEGS) FOR PCI	MOLEX INCORPORATED																		
MATERIAL NO: 747370016	DOCUMENT NO: SD-74737-0016	THIS DRAWING CONTAINS INFORMATION THAT IS PROPRIETARY TO MOLEX INCORPORATED AND SHOULD NOT BE USED WITHOUT WRITTEN PERMISSION																			
DRAFT WHERE APPLICABLE MUST REMAIN WITHIN DIMENSIONS	SIZE D	SHEET NO. 3 OF 3																			

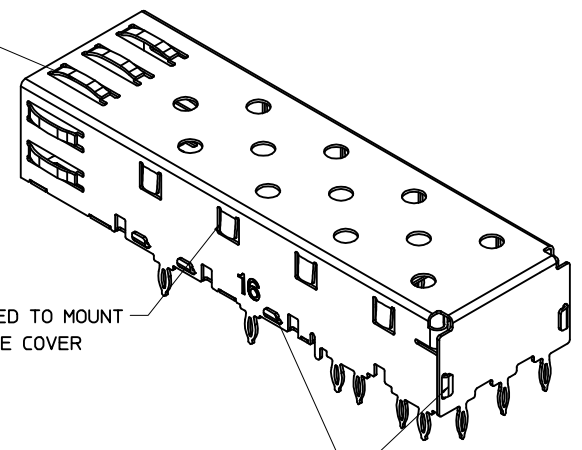
19 18 17 16 15 14 13 12 11 10 9 8 7 6 5 4 3 2 1



BOTTOM VIEW

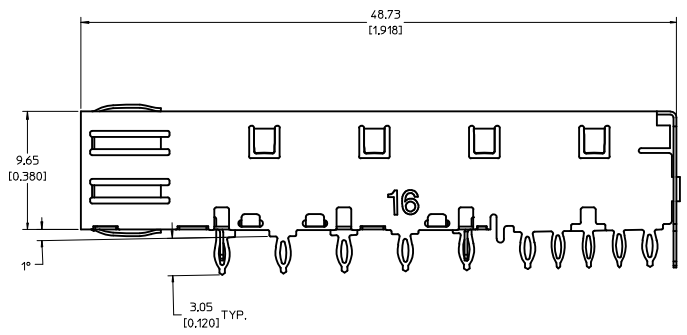


SPRING FINGER GASKET WITH TWO POINTS OF CONTACT. COMPLIES WITH (SFP) MSA BOARD AND BEZEL LOCATIONS.



TABS USED TO MOUNT LIGHT PIPE COVER

ONE PIECE DESIGN SECURLY FASTENED

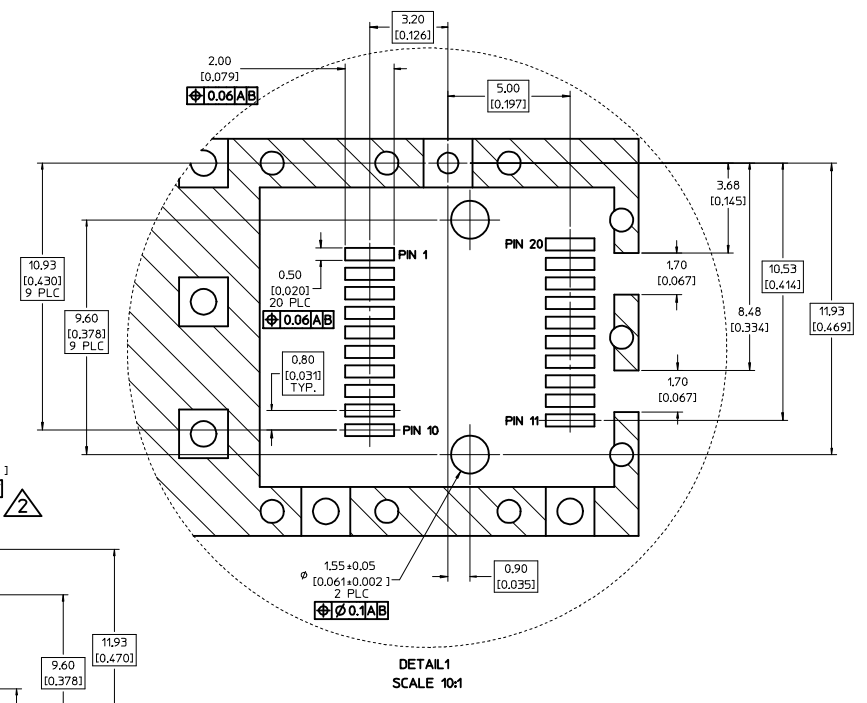
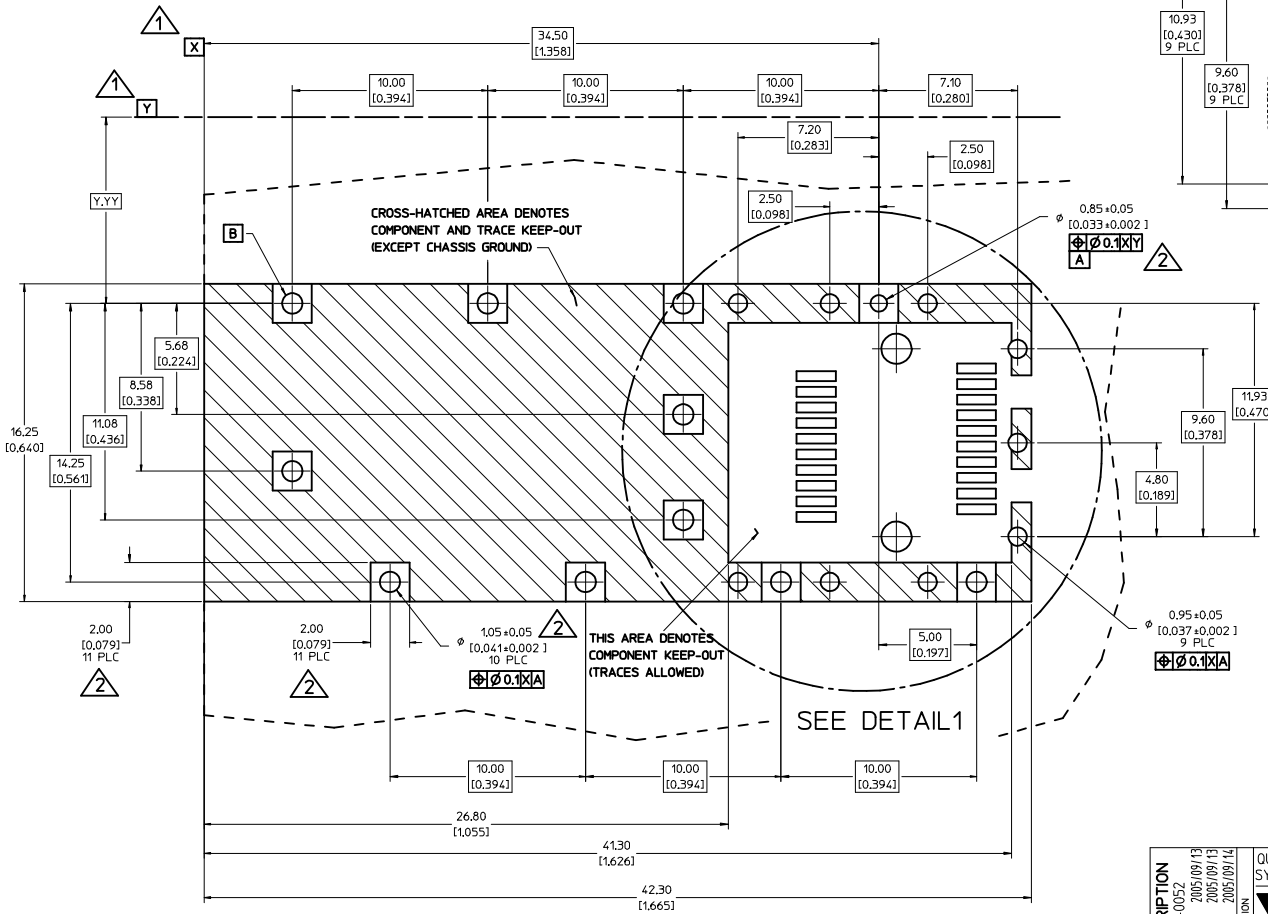


NOTES:

1. PRESS FIT LEGS, 0.120 INCHES LONG. 1.57 [0.062] MINIMUM PCB THICKNESS.
2. THIS CAGE IS FOR SINGLE SIDED USE ONLY.
3. CAN BE USED WITH THE FOLLOWING LIGHT PIPE PART NUMBERS:
 - 747260001 - LIGHT PIPE FROM BACK TO TOP (REFER TO DOCUMENT SD-74726-001)
 - 747260002 - LIGHT PIPE FROM SIDE TO TOP (REFER TO DOCUMENT SD-74726-002)
4. MATERIAL: COPPER ALLOY
PLATING: PRE-PLATED WITH NICKEL
5. THIS PART MEETS THE RESTRICTION OF HAZARDOUS SUBSTANCES IN ELECTRICAL AND ELECTRONIC EQUIPMENT (ROHS) DIRECTIVE (2002/95/EC).

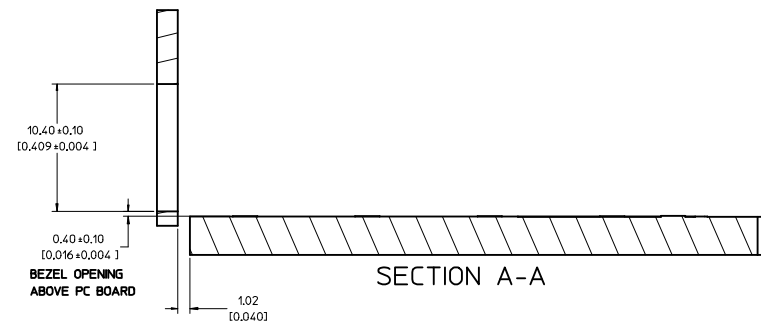
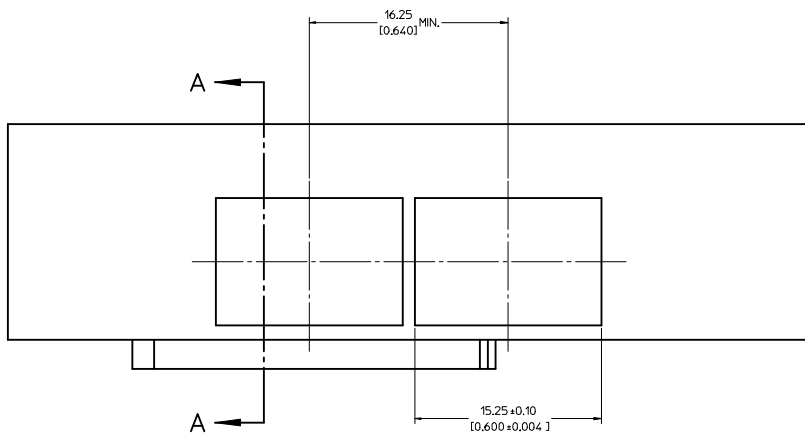
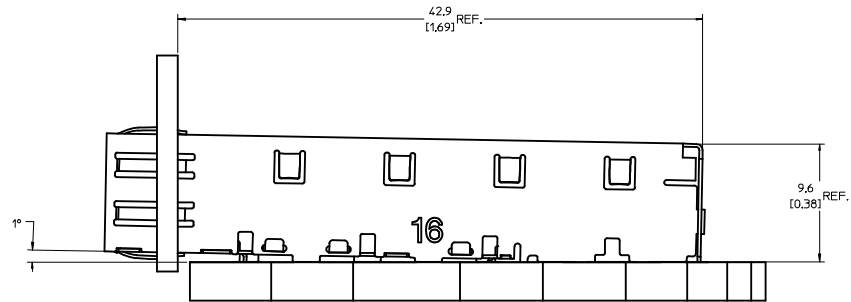
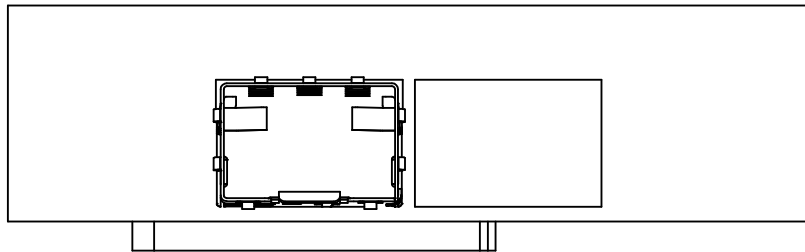
ENTER DESCRIPTION IEC NO: USY2006-0052 DRAWN BY: KSI MONSON 2005/09/13 CHECKED BY: CHYOK BRUSSELL 2005/09/13 APPROVED BY: APPR: BRUSSELL 2005/09/14	QUALITY SYMBOLS ▽=0 ▽=0	GENERAL TOLERANCES (UNLESS SPECIFIED)		DIMENSION STYLE MM/IN		SCALE 5:1	DESIGN UNITS METRIC	THIRD ANGLE PROJECTION	
		4 PLACES ±--- ±--- 3 PLACES ±--- ±.005 2 PLACES ±0.13 ±.01 1 PLACE ±0.25 ±--- ANGULAR ± 1°	mm INCH	DRAWN BY KSI MONSON	DATE 2005/09/12	TITLE SFP ONE PIECE CAGE PRESS-FIT (0.120 LEGS) FOR PCI			
		DRAFT WHERE APPLICABLE MUST REMAIN WITHIN DIMENSIONS		APPROVED BY BRUSSELL	DATE 2005/09/12	MOLEX INCORPORATED			
MATERIAL NO. 747370016		DOCUMENT NO. SD-74737-0016		SIZE D		SHEET NO. 1 OF 3			

- 1 DATUM AND BASIC DIMENSIONS ESTABLISHED BY CUSTOMER.
- 2 PADS AND VIAS ARE CHASSIS GROUND.
- 3 HOLE LAYOUT SHOWN IS FOR SINGLE SIDED MOUNTING ONLY.
- 4 CONNECTOR PAD LAYOUT PER SFP MSA, WILL ACCOMMODATE MOLEX CONNECTOR SERIES 74441 OR EQUIVALENT.



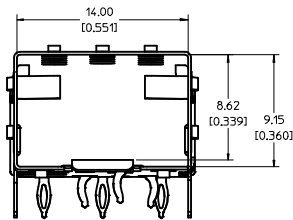
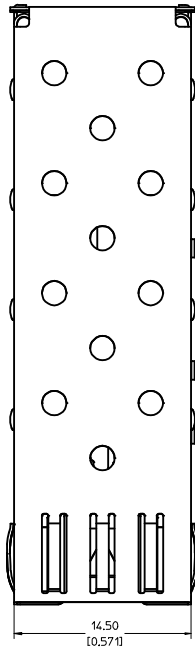
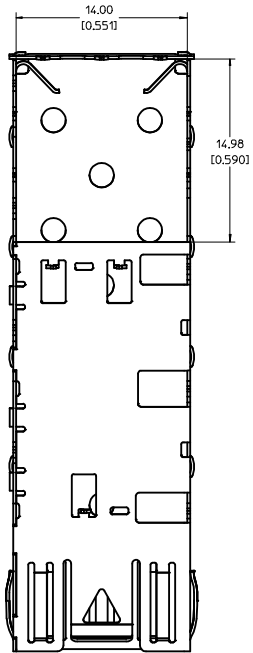
ENTER DESCRIPTION IEC NO.: USY2006-0052 DRAWN BY: KSI MONSO CHYK BRUSSELL APPR: BRUSSELL DATE: 2005/09/13 DATE: 2005/09/13 DATE: 2005/09/14	QUALITY SYMBOLS ▽=0 ▽=0		GENERAL TOLERANCES (UNLESS SPECIFIED) <table border="1"> <tr> <th></th> <th>mm</th> <th>INCH</th> </tr> <tr> <td>4 PLACES</td> <td>±---</td> <td>±---</td> </tr> <tr> <td>3 PLACES</td> <td>±---</td> <td>±.005</td> </tr> <tr> <td>2 PLACES</td> <td>±0.13</td> <td>±.01</td> </tr> <tr> <td>1 PLACE</td> <td>±0.25</td> <td>±---</td> </tr> </table>			mm	INCH	4 PLACES	±---	±---	3 PLACES	±---	±.005	2 PLACES	±0.13	±.01	1 PLACE	±0.25	±---	DIMENSION STYLE MM/IN		SCALE 8:1		DESIGN UNITS METRIC		THIRD ANGLE PROJECTION	
		mm	INCH																								
	4 PLACES	±---	±---																								
3 PLACES	±---	±.005																									
2 PLACES	±0.13	±.01																									
1 PLACE	±0.25	±---																									
DRAFT WHERE APPLICABLE MUST REMAIN WITHIN DIMENSIONS			MATERIAL NO. 747370016		DATE 2005/09/12		DATE 2005/09/12		MOLEX INCORPORATED																		
SIZE D			DOCUMENT NO. SD-74737-0016		DATE 2005/09/12		DATE 2005/09/12		SHEET NO. 2 OF 3																		

20 19 18 17 16 15 14 13 12 11 10 9 8 7 6 5 4 3 2 1

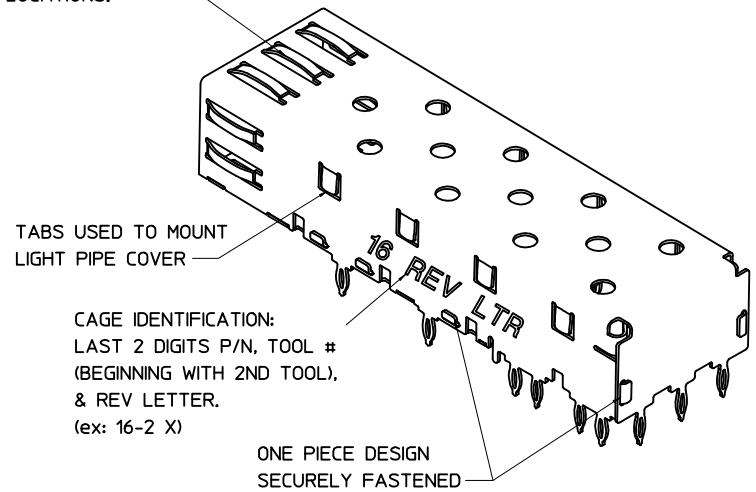


ENTER DESCRIPTION IEC NO: USY2006-0052 DRAWN BY: KSI MONSO 2005/09/13 CHECKED BY: CHYD BRUSSELL 2005/09/13 APPROVED BY: APPR: BRUSSELL 2005/09/14 REV: A	QUALITY SYMBOLS ▽=0 ▽=0	GENERAL TOLERANCES (UNLESS SPECIFIED) <table border="1"> <thead> <tr> <th></th> <th>mm</th> <th>INCH</th> </tr> </thead> <tbody> <tr> <td>4 PLACES</td> <td>±---</td> <td>±---</td> </tr> <tr> <td>3 PLACES</td> <td>±---</td> <td>±.005</td> </tr> <tr> <td>2 PLACES</td> <td>±0.13</td> <td>±.01</td> </tr> <tr> <td>1 PLACE</td> <td>±0.25</td> <td>±---</td> </tr> <tr> <td colspan="3">ANGULAR ± 1°</td> </tr> </tbody> </table>		mm	INCH	4 PLACES	±---	±---	3 PLACES	±---	±.005	2 PLACES	±0.13	±.01	1 PLACE	±0.25	±---	ANGULAR ± 1°			DIMENSION STYLE MM/IN	SCALE 5:1	DESIGN UNITS METRIC	THIRD ANGLE PROJECTION
		mm	INCH																					
	4 PLACES	±---	±---																					
	3 PLACES	±---	±.005																					
2 PLACES	±0.13	±.01																						
1 PLACE	±0.25	±---																						
ANGULAR ± 1°																								
DRAWN BY: KSI MONSO 2005/09/12 CHECKED BY: BRUSSELL 2005/09/12 APPROVED BY: BRUSSELL 2005/09/12	DATE: 2005/09/12 DATE: 2005/09/12 DATE: 2005/09/12	TITLE SFP ONE PIECE CAGE PRESS-FIT (0.120 LEGS) FOR PCI	MOLEX INCORPORATED																					
MATERIAL NO: 747370016	DOCUMENT NO: SD-74737-0016	SHEET NO: 3 OF 3		THIS DRAWING CONTAINS INFORMATION THAT IS PROPRIETARY TO MOLEX INCORPORATED AND SHOULD NOT BE USED WITHOUT WRITTEN PERMISSION																				
DRAFT WHERE APPLICABLE MUST REMAIN WITHIN DIMENSIONS																								

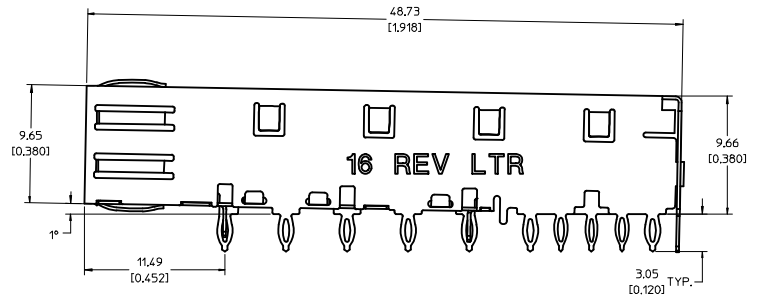
19 18 17 16 15 14 13 12 11 10 9 8 7 6 5 4 3 2 1



SPRING FINGER GASKET WITH TWO POINTS OF CONTACT. COMPLIES WITH (SFP) MSA BOARD AND BEZEL LOCATIONS.



CAGE IDENTIFICATION:
LAST 2 DIGITS P/N, TOOL #
(BEGINNING WITH 2ND TOOL),
& REV LETTER.
(ex: 16-2 X)



NOTES:

- PRESS FIT LEGS, 0.120 INCHES LONG. 1.57 [0.062] MINIMUM PCB THICKNESS.
- THIS CAGE IS FOR SINGLE SIDED USE ONLY.
- CAN BE USED WITH THE FOLLOWING LIGHT PIPE PART NUMBERS:

747260001 - LIGHT PIPE FROM BACK TO TOP
(REFER TO DOCUMENT SD-74726-001)

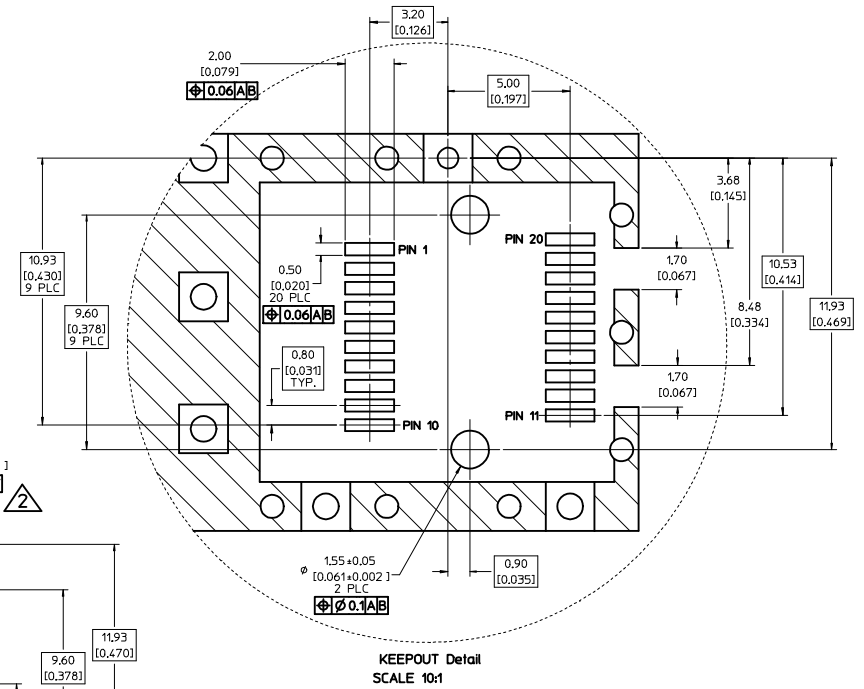
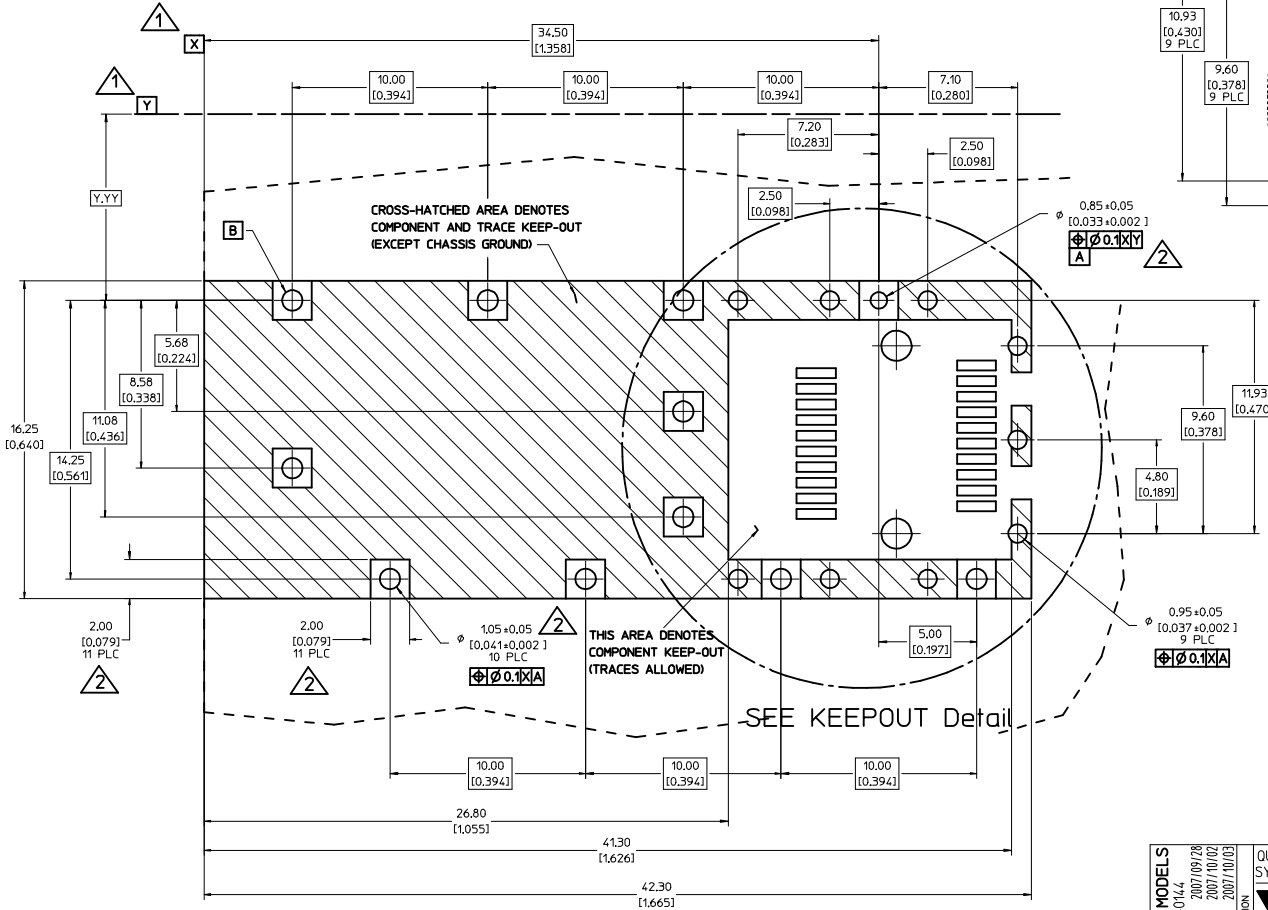
747260002 - LIGHT PIPE FROM SIDE TO TOP
(REFER TO DOCUMENT SD-74726-002)

- MATERIAL: COPPER ALLOY
PLATING: PRE-PLATED WITH NICKEL

- THIS PART MEETS THE RESTRICTION OF HAZARDOUS SUBSTANCES IN ELECTRICAL AND ELECTRONIC EQUIPMENT (ROHS) DIRECTIVE (2002/95/EC).

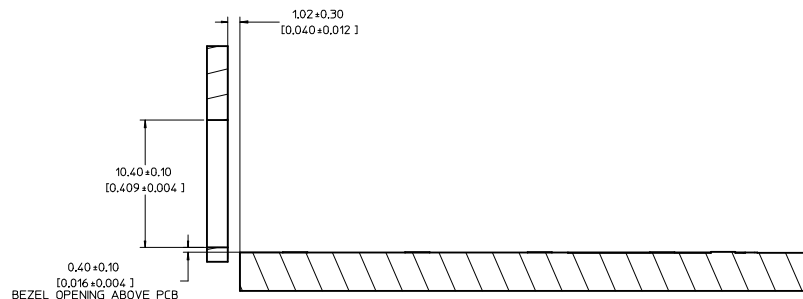
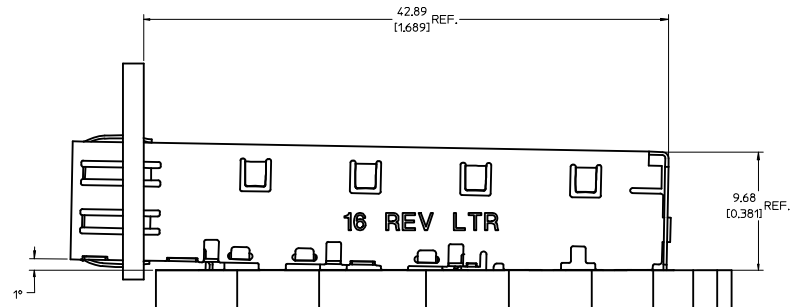
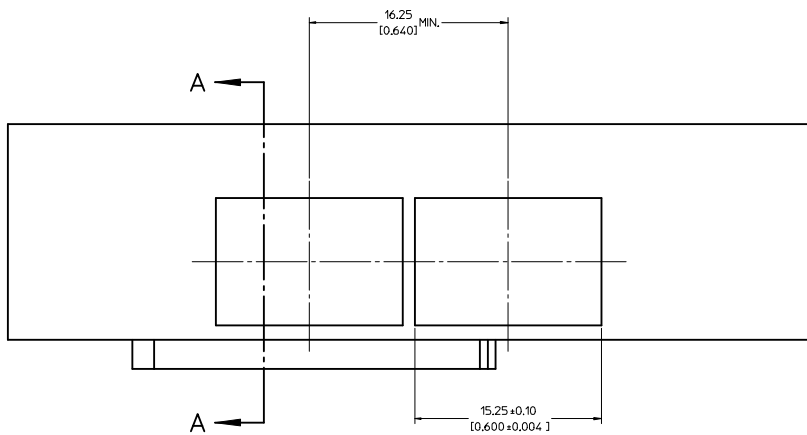
UPDATED 3D MODELS USY2008-0144 DRAWN BY: CCOX 2007/09/28 CHKD: CCOX 2007/10/02 APPR: RMAHMOOD 2007/10/03	QUALITY SYMBOLS	GENERAL TOLERANCES (UNLESS SPECIFIED)	DIMENSION STYLE	SCALE	DESIGN UNITS	THIRD ANGLE PROJECTION															
	$\nabla=0$ $\nabla=0$	<table border="1"> <tr> <th></th> <th>mm</th> <th>INCH</th> </tr> <tr> <td>4 PLACES</td> <td>±.005</td> <td>±.0005</td> </tr> <tr> <td>3 PLACES</td> <td>±.013</td> <td>±.005</td> </tr> <tr> <td>2 PLACES</td> <td>±0.25</td> <td>±.01</td> </tr> <tr> <td>1 PLACE</td> <td>±0.25</td> <td>±.01</td> </tr> </table>		mm	INCH	4 PLACES	±.005	±.0005	3 PLACES	±.013	±.005	2 PLACES	±0.25	±.01	1 PLACE	±0.25	±.01	MM/IN	5:1	METRIC	
		mm	INCH																		
	4 PLACES	±.005	±.0005																		
3 PLACES	±.013	±.005																			
2 PLACES	±0.25	±.01																			
1 PLACE	±0.25	±.01																			
DRAFT WHERE APPLICABLE MUST REMAIN WITHIN DIMENSIONS	DRAWN BY: CCOX 2006/10/30 CHECKED BY: RMAHMOOD 2006/10/30 APPROVED BY: RMAHMOOD 2006/10/30 MATERIAL NO. 747370016 SIZE D	TITLE: SFP ONE PIECE CAGE PRESS-FIT (0.120 LEGS) FOR PCI MOLEX INCORPORATED DOCUMENT NO. SD-74737-016 SHEET NO. 1 OF 4																			

- DATUM AND BASIC DIMENSIONS ESTABLISHED BY CUSTOMER.
- PADS AND VIAS ARE CHASSIS GROUND.
- HOLE LAYOUT SHOWN IS FOR SINGLE SIDED MOUNTING ONLY.
- CONNECTOR PAD LAYOUT PER SFP MSA, WILL ACCOMMODATE MOLEX CONNECTOR SERIES 74441 OR EQUIVALENT.



UPDATED 3D MODELS USY2006-0144 DRAWN: CCOX 2007/09/28 CHYD: 2007/10/02 APPR: RMAHMOOD 2007/10/03	QUALITY SYMBOLS	GENERAL TOLERANCES (UNLESS SPECIFIED)	DIMENSION STYLE	SCALE	DESIGN UNITS	THIRD ANGLE PROJECTION
	$\nabla=0$ $\nabla=0$	mm INCH 4 PLACES \pm --- \pm --- 3 PLACES \pm --- \pm .005 2 PLACES \pm 0.13 \pm .01 1 PLACE \pm 0.25 \pm --- ANGULAR \pm 1°	MM/IN	8:1	METRIC	
	DRAFT WHERE APPLICABLE MUST REMAIN WITHIN DIMENSIONS	DRAWN BY: CCOX DATE: 2006/10/30 CHECKED BY: RMAHMOOD DATE: 2006/10/30 APPROVED BY: RMAHMOOD DATE: 2006/10/30	TITLE: SFP ONE PIECE CAGE PRESS-FIT (0.120 LEGS) FOR PCI			
	MATERIAL NO. 747370016 DOCUMENT NO. SD-74737-016	MOLEX INCORPORATED				SHEET NO. 2 OF 4

20 19 18 17 16 15 14 13 12 11 10 9 8 7 6 5 4 3 2 1



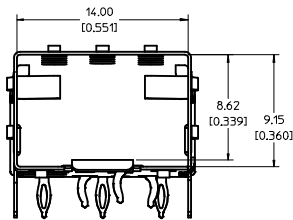
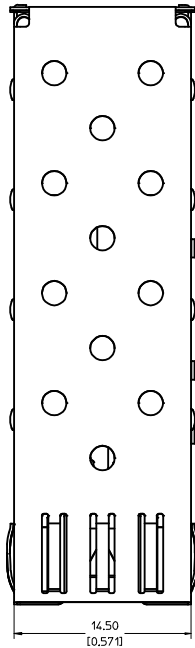
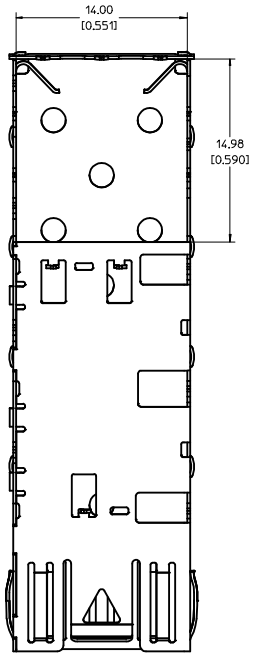
SECTION A-A

UPDATED 3D MODELS USY2008-0144 2007/09/28 CCX 2007/10/02 CHYD 2007/10/03 APPR:RMAHMOOD	QUALITY SYMBOLS ▽=0 ▽=0	GENERAL TOLERANCES (UNLESS SPECIFIED) <table border="1"> <thead> <tr> <th></th> <th>mm</th> <th>INCH</th> </tr> </thead> <tbody> <tr> <td>4 PLACES</td> <td>±---</td> <td>±---</td> </tr> <tr> <td>3 PLACES</td> <td>±---</td> <td>±.005</td> </tr> <tr> <td>2 PLACES</td> <td>±0.13</td> <td>±.01</td> </tr> <tr> <td>1 PLACE</td> <td>±0.25</td> <td>±---</td> </tr> <tr> <td colspan="3">ANGULAR ± 1°</td> </tr> </tbody> </table>		mm	INCH	4 PLACES	±---	±---	3 PLACES	±---	±.005	2 PLACES	±0.13	±.01	1 PLACE	±0.25	±---	ANGULAR ± 1°			DIMENSION STYLE MM/IN	SCALE 5:1	DESIGN UNITS METRIC	THIRD ANGLE PROJECTION
		mm	INCH																					
	4 PLACES	±---	±---																					
	3 PLACES	±---	±.005																					
2 PLACES	±0.13	±.01																						
1 PLACE	±0.25	±---																						
ANGULAR ± 1°																								
DRAWN BY CCX 2006/10/30	CHECKED BY RMAHMOOD 2006/10/30	APPROVED BY RMAHMOOD 2006/10/30	MATERIAL NO. 747370016	DOCUMENT NO. SD-74737-016	TITLE SFP ONE PIECE CAGE PRESS-FIT (0,120 LEGS) FOR PCI	SHEET NO. 3 OF 4																		
DRAFT WHERE APPLICABLE MUST REMAIN WITHIN DIMENSIONS			THIS DRAWING CONTAINS INFORMATION THAT IS PROPRIETARY TO MOLEX INCORPORATED AND SHOULD NOT BE USED WITHOUT WRITTEN PERMISSION																					
MOLEX INCORPORATED																								

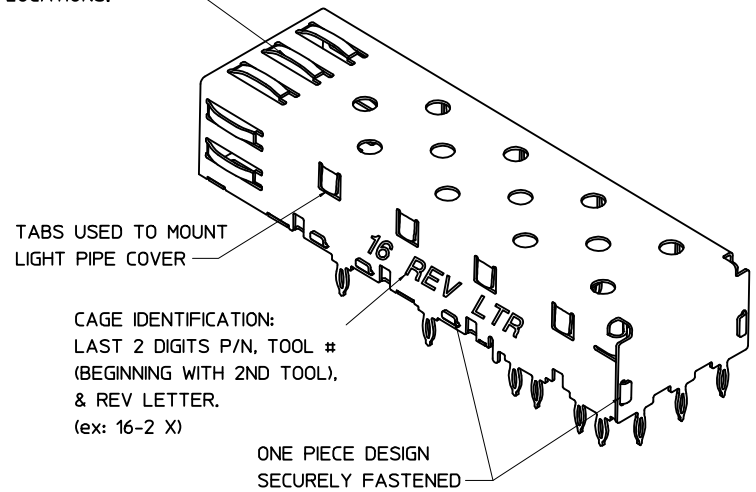
19 18 17 16 15 14 13 12 11 10 9 8 7 6 5 4 3 2 1

DATE	REV	CHANGES
2005/06/10	A	INITIAL RELEASE
2006/10/20	B	SEPARATED FROM MAIN DRAWING E-74737-0000, UPDATED VIEWS
2007/01/10	C	ADDED NOTE 5
2007/09/27	D	[1] ON SHT2 CHG'D DETAIL1 TO "KEEPOUT DETAIL" AND FRONT1 TO "PCB LAYOUT"; [2] ADDED REVISION SHEET; [3] ON SHT1 ROTATED BTM_VIEW 180 DEGREES. [4] ADDED "TOOL # (BEGINNING WITH 2ND TOOL)" TO CAGE REV NOTE ON SHT1.

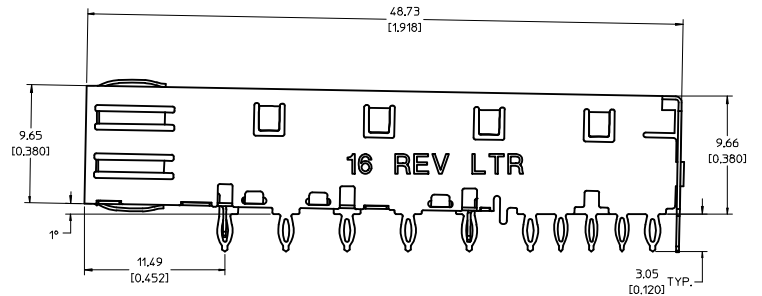
UPDATED 3D MODELS USY2008-0144 DRWN:CCOX 2007/09/28 CHYK: 2007/10/02 APPR:RMAHMOOD 2007/10/03 REY:	QUALITY SYMBOLS ▽=0 ▽=0	GENERAL TOLERANCES (UNLESS SPECIFIED)		DIMENSION STYLE		SCALE	DESIGN UNITS	THIRD ANGLE PROJECTION			
		mm		INCH		MM/IN		1:1	METRIC		
		4 PLACES	± ---	± ---	± ---	DRAWN BY	DATE	TITLE			
		3 PLACES	± ---	± .005	± ---	CCOX	2006/10/30	SFP ONE PIECE CAGE PRESS-FIT (0,120 LEGS) FOR PCI			
2 PLACES	± 0.13	± .01	± ---	CHECKED BY	DATE	MOLEX INCORPORATED					
1 PLACE	± 0.25	± ---	± ---	RMAHMOOD	2006/10/30						
ANGULAR ± 1°		DRAFT WHERE APPLICABLE MUST REMAIN WITHIN DIMENSIONS		APPROVED BY		DATE	MATERIAL NO.				
				RMAHMOOD		2006/10/30	747370016		DOCUMENT NO.		
							SD-74737-016		SHEET NO.		
							THIS DRAWING CONTAINS INFORMATION THAT IS PROPRIETARY TO MOLEX INCORPORATED AND SHOULD NOT BE USED WITHOUT WRITTEN PERMISSION		4 OF 4		



SPRING FINGER GASKET WITH TWO POINTS OF CONTACT. COMPLIES WITH (SFP) MSA BOARD AND BEZEL LOCATIONS.



CAGE IDENTIFICATION:
LAST 2 DIGITS P/N, TOOL #
(BEGINNING WITH 2ND TOOL),
& REV LETTER.
(ex: 16-2 X)



NOTES:

- PRESS FIT LEGS, 0.120 INCHES LONG. 1.57 [0.062] MINIMUM PCB THICKNESS.
- THIS CAGE IS FOR SINGLE SIDED USE ONLY.
- CAN BE USED WITH THE FOLLOWING LIGHT PIPE PART NUMBERS:

747260001 - LIGHT PIPE FROM BACK TO TOP
(REFER TO DOCUMENT SD-74726-001)

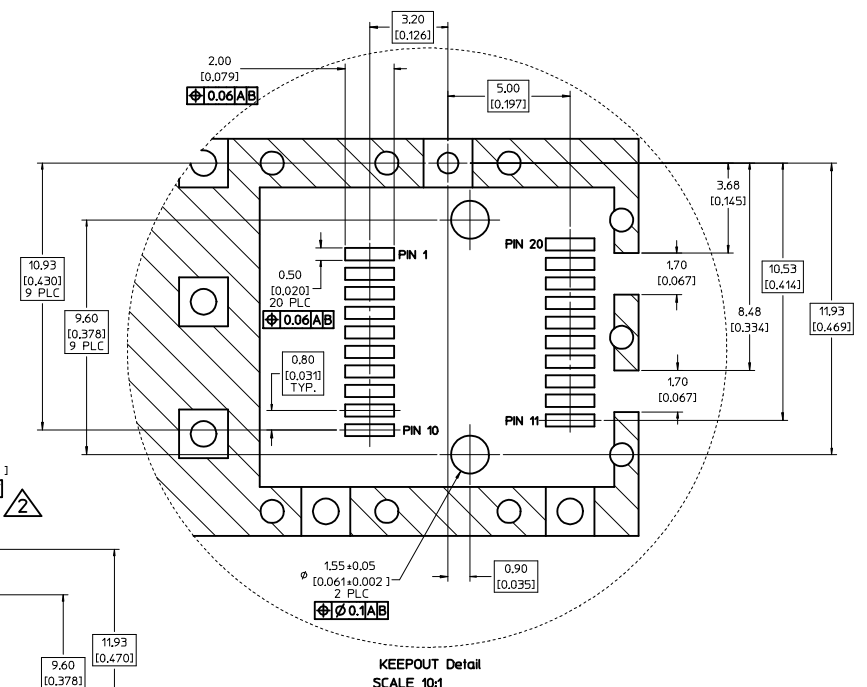
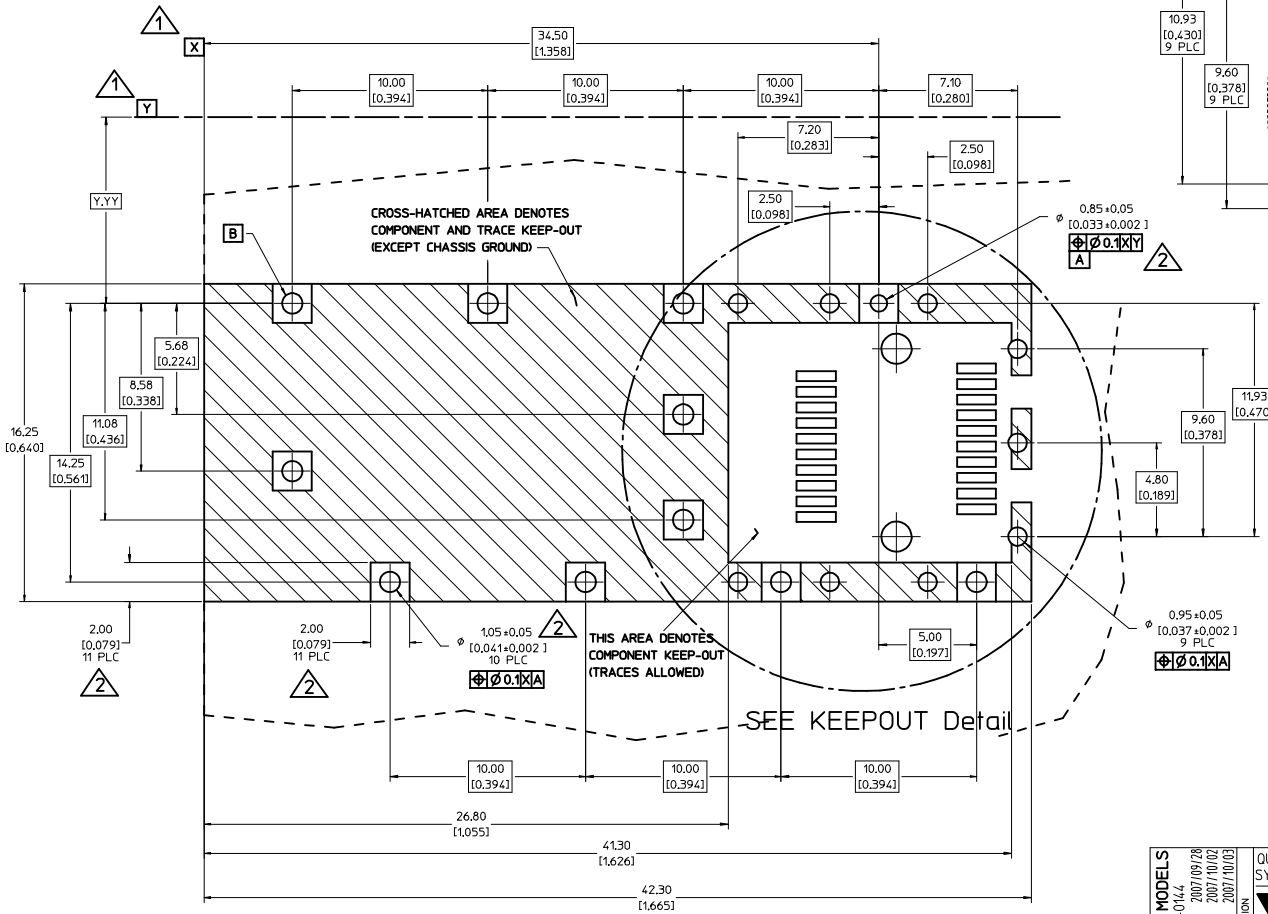
747260002 - LIGHT PIPE FROM SIDE TO TOP
(REFER TO DOCUMENT SD-74726-002)

- MATERIAL: COPPER ALLOY
PLATING: PRE-PLATED WITH NICKEL

- THIS PART MEETS THE RESTRICTION OF HAZARDOUS SUBSTANCES IN ELECTRICAL AND ELECTRONIC EQUIPMENT (ROHS) DIRECTIVE (2002/95/EC).

UPDATED 3D MODELS USY 2008-0144 DRAWN BY: CCOX 2007/09/28 CHKD: CCOX 2007/10/02 APPR: RMAHMOOD 2007/10/03	QUALITY SYMBOLS ▽=0 ▽=0	GENERAL TOLERANCES (UNLESS SPECIFIED)		DIMENSION STYLE MM/IN	SCALE 5:1	DESIGN UNITS METRIC	THIRD ANGLE PROJECTION		
		4 PLACES ±--- ±---	3 PLACES ±--- ±.005	2 PLACES ±0.13 ±.01	1 PLACE ±0.25 ±---	ANGULAR ± 1°	DRAWN BY: CCOX DATE: 2006/10/30 CHECKED BY: RMAHMOOD DATE: 2006/10/30 APPROVED BY: RMAHMOOD DATE: 2006/10/30	TITLE SFP ONE PIECE CAGE PRESS-FIT (0.120 LEGS) FOR PCI	MOLEX INCORPORATED
		DRAFT WHERE APPLICABLE MUST REMAIN WITHIN DIMENSIONS		MATERIAL NO. 747370016	DOCUMENT NO. SD-74737-016	SHEET NO. 1 OF 4			
		THIS DRAWING CONTAINS INFORMATION THAT IS PROPRIETARY TO MOLEX INCORPORATED AND SHOULD NOT BE USED WITHOUT WRITTEN PERMISSION							

- 1 DATUM AND BASIC DIMENSIONS ESTABLISHED BY CUSTOMER.
- 2 PADS AND VIAS ARE CHASSIS GROUND.
- 3 HOLE LAYOUT SHOWN IS FOR SINGLE SIDED MOUNTING ONLY.
- 4 CONNECTOR PAD LAYOUT PER SFP MSA, WILL ACCOMMODATE MOLEX CONNECTOR SERIES 74441 OR EQUIVALENT.

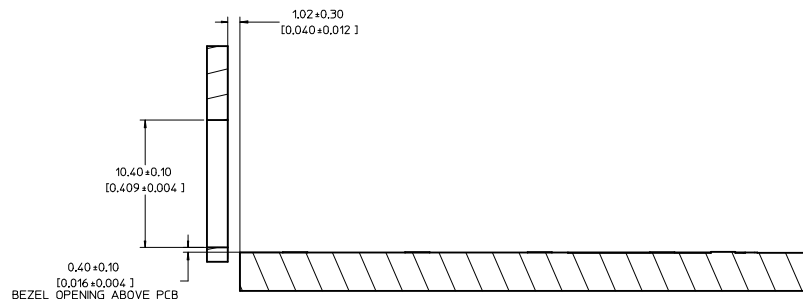
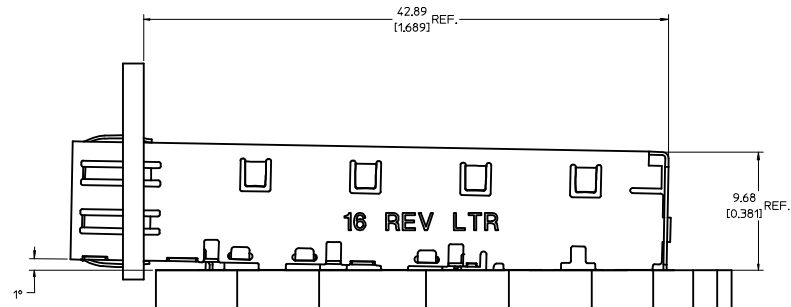
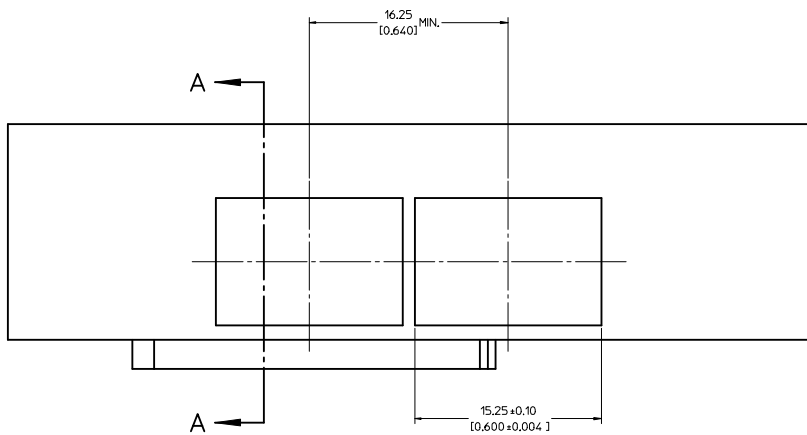


UPDATED 3D MODELS USY2006-0144 DRAWN: CCOX 2007/09/28 CHYD: 2007/10/02 APPR: RMAHMOOD 2007/10/03	QUALITY SYMBOLS ▽=0 ▽=0	GENERAL TOLERANCES (UNLESS SPECIFIED) <table border="1"> <thead> <tr> <th></th> <th>mm</th> <th>INCH</th> </tr> </thead> <tbody> <tr> <td>4 PLACES</td> <td>±---</td> <td>±---</td> </tr> <tr> <td>3 PLACES</td> <td>±---</td> <td>±.005</td> </tr> <tr> <td>2 PLACES</td> <td>±0.13</td> <td>±.01</td> </tr> <tr> <td>1 PLACE</td> <td>±0.25</td> <td>±---</td> </tr> </tbody> </table>		mm	INCH	4 PLACES	±---	±---	3 PLACES	±---	±.005	2 PLACES	±0.13	±.01	1 PLACE	±0.25	±---	DIMENSION STYLE MM/IN	SCALE 8:1	DESIGN UNITS METRIC	THIRD ANGLE PROJECTION
		mm	INCH																		
	4 PLACES	±---	±---																		
	3 PLACES	±---	±.005																		
2 PLACES	±0.13	±.01																			
1 PLACE	±0.25	±---																			
			DRAWN BY: CCOX DATE: 2006/10/30	TITLE SFP ONE PIECE CAGE PRESS-FIT (0.120 LEGS) FOR PCI																	
			CHECKED BY: RMAHMOOD DATE: 2006/10/30	MOLEX INCORPORATED																	
			APPROVED BY: RMAHMOOD DATE: 2006/10/30	MATERIAL NO. 747370016	DOCUMENT NO. SD-74737-016	SHEET NO. 2 OF 4															

DRAFT WHERE APPLICABLE MUST REMAIN WITHIN DIMENSIONS

SIZE D THIS DRAWING CONTAINS INFORMATION THAT IS PROPRIETARY TO MOLEX INCORPORATED AND SHOULD NOT BE USED WITHOUT WRITTEN PERMISSION

20 19 18 17 16 15 14 13 12 11 10 9 8 7 6 5 4 3 2 1



SECTION A-A

UPDATED 3D MODELS USY2008-0144 2007/09/28 CCX 2007/10/02 CHYK 2007/10/03 APPR:RMAHMOOD	QUALITY SYMBOLS ▽=0 ▽=0	GENERAL TOLERANCES (UNLESS SPECIFIED) <table border="1"> <thead> <tr> <th></th> <th>mm</th> <th>INCH</th> </tr> </thead> <tbody> <tr> <td>4 PLACES</td> <td>±---</td> <td>±---</td> </tr> <tr> <td>3 PLACES</td> <td>±---</td> <td>±.005</td> </tr> <tr> <td>2 PLACES</td> <td>±0.13</td> <td>±.01</td> </tr> <tr> <td>1 PLACE</td> <td>±0.25</td> <td>±---</td> </tr> </tbody> </table> ANGULAR ± 1°		mm	INCH	4 PLACES	±---	±---	3 PLACES	±---	±.005	2 PLACES	±0.13	±.01	1 PLACE	±0.25	±---	DIMENSION STYLE MM/IN	SCALE 5:1	DESIGN UNITS METRIC	THIRD ANGLE PROJECTION
		mm	INCH																		
	4 PLACES	±---	±---																		
	3 PLACES	±---	±.005																		
2 PLACES	±0.13	±.01																			
1 PLACE	±0.25	±---																			
DRAWN BY CCX 2006/10/30	CHECKED BY RMAHMOOD 2006/10/30	APPROVED BY RMAHMOOD 2006/10/30	DATE 2006/10/30	DATE 2006/10/30	DATE 2006/10/30	TITLE SFP ONE PIECE CAGE PRESS-FIT (0,120 LEGS) FOR PCI															
MATERIAL NO. 747370016	DOCUMENT NO. SD-74737-016	MOLEX INCORPORATED																			
DRAFT WHERE APPLICABLE MUST REMAIN WITHIN DIMENSIONS	SIZE D	THIS DRAWING CONTAINS INFORMATION THAT IS PROPRIETARY TO MOLEX INCORPORATED AND SHOULD NOT BE USED WITHOUT WRITTEN PERMISSION																			

19 18 17 16 15 14 13 12 11 10 9 8 7 6 5 4 3 2 1

DATE	REV	CHANGES
2005/06/10	A	INITIAL RELEASE
2006/10/20	B	SEPARATED FROM MAIN DRAWING E-74737-0000, UPDATED VIEWS
2007/01/10	C	ADDED NOTE 5
2007/09/27	D	[1] ON SHT2 CHG'D DETAIL1 TO "KEEPOUT DETAIL" AND FRONT1 TO "PCB LAYOUT"; [2] ADDED REVISION SHEET; [3] ON SHT1 ROTATED BTM_VIEW 180 DEGREES. [4] ADDED "TOOL # (BEGINNING WITH 2ND TOOL)" TO CAGE REV NOTE ON SHT1.

UPDATED 3D MODELS USY2008-0144 DRWN:CCOX 2007/09/28 CHYK: 2007/10/02 APPR:RMAHMOOD 2007/10/03 REV DESCRIPTION	QUALITY SYMBOLS	GENERAL TOLERANCES (UNLESS SPECIFIED)	DIMENSION STYLE	SCALE	DESIGN UNITS	THIRD ANGLE PROJECTION
	=0 =0	mm INCH 4 PLACES ± --- ± --- 3 PLACES ± --- ± .005 2 PLACES ± 0.13 ± .01 1 PLACE ± 0.25 ± --- ANGULAR ± 1°	MM/IN	1:1	METRIC	
	DRAWN BY DATE CCOX 2006/10/30 CHECKED BY DATE RMAHMOOD 2006/10/30 APPROVED BY DATE RMAHMOOD 2006/10/30	MATERIAL NO. 747370016	TITLE SFP ONE PIECE CAGE PRESS-FIT (0,120 LEGS) FOR PCI	MOLEX INCORPORATED	SHEET NO. 4 OF 4	
	DRAFT WHERE APPLICABLE MUST REMAIN WITHIN DIMENSIONS	DOCUMENT NO. SD-74737-016	THIS DRAWING CONTAINS INFORMATION THAT IS PROPRIETARY TO MOLEX INCORPORATED AND SHOULD NOT BE USED WITHOUT WRITTEN PERMISSION	MOLEX	MOLEX INCORPORATED	