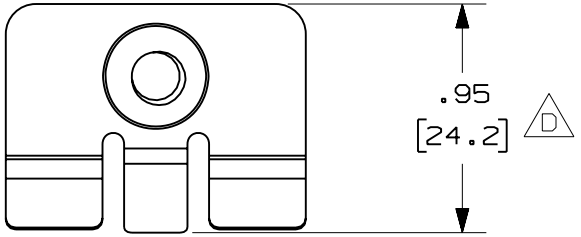


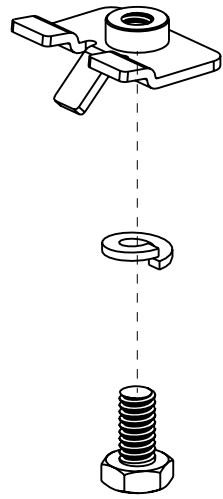
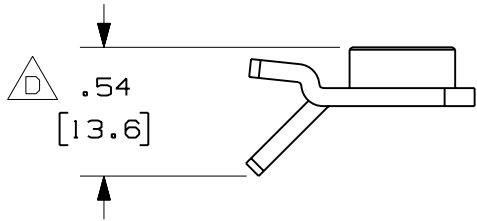
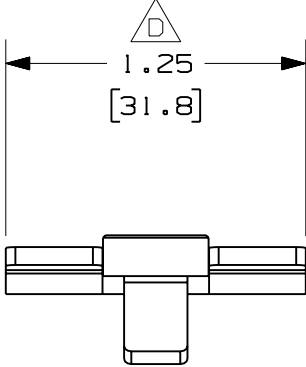
THIS COPY IS PROVIDED ON A RESTRICTED BASIS AND IS NOT TO BE USED IN ANY WAY DETRIMENTAL TO THE INTERESTS OF PANDUIT CORP.

PANDUIT PART NUMBER	WEIGHT
FROMC-X	0.04 LB/EACH (18g/EACH)



NOTES:

1. SEE CURRENT CATALOG FOR ADDITIONAL PART SUFFIXES TO INDICATE PACKAGE QUANTITY.
2. THE FIBERRUNNER QUICK MOUNT CLIP KIT INCLUDES:
TEN (10) CLIP ASSEMBLIES,
TEN (10) 1/4-20x1/2 HEX HEAD CAP SCREWS,
TEN (10) 1/4 HELICAL SPRING LOCKWASHERS.
3. FINISH COLOR BLACK (EXCEPT HARDWARE)
4. DIMENSIONS IN PARENTHESES ARE IN METRIC.



ENG. REF.: D38241BL_DC_FROMC-X_01.prt

CAD FILENAME/LAYERS: FROMC-X.pdf

-	-----	---	---	D. RELOCATED DIMENSIONS C. REVISED PART WEIGHT	-----	--	--			
2	7-12-06	DTP	RN	B. REVISED GENERAL NOTES A. REVISED CAD FILENAME	38241-11	RN	RN			
1	2-12-02	JHNU	HIW	RELEASED TO PRODUCTION	38241-11	HIW	HIW			
R	12-5-01	JHNU	HIW	DRAWING RELEASED						
REV	DATE	BY	CHK	DESCRIPTION	ECN	R	CUST	SUP	GMBH	

PANDUIT CORP TINLEY PARK, ILLINOIS

FIBERRUNNER QUICK MOUNT CLIPS (FROMC-X)
CUSTOMER DRAWING

UNLESS OTHERWISE SPECIFIED, DIMENSIONAL TOLERANCES ARE:
(.X) ± (.XXX) ±
(.XX) ± .03 (.8) ANGLES ±

UNLESS OTHERWISE SPECIFIED, ALL DIMENSIONS ARE GIVEN IN INCHES, THIRD ANGLE PROJECTION.

DRAWN BY: JHNU
DATE: 12-5-01
CHK'D: HIW

MAT'L: STEEL

SCALE: NONE

DRAWING NO.: 38241-11
DWG SIZE: A