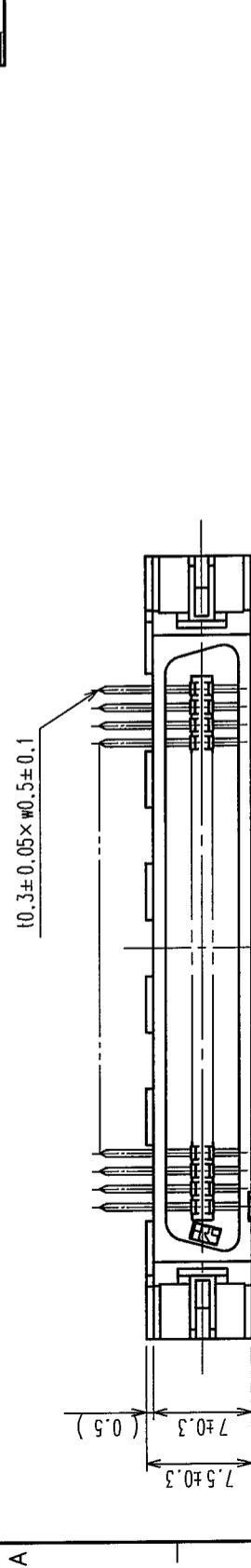


In case of consideration for using Automotive equipment / device which demand high reliability, kindly contact our sales window correspondents.

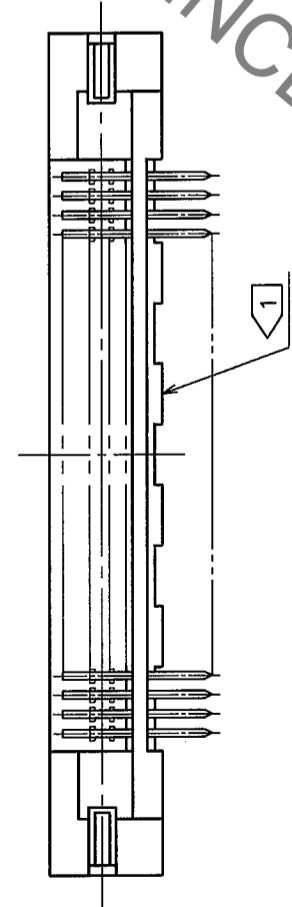
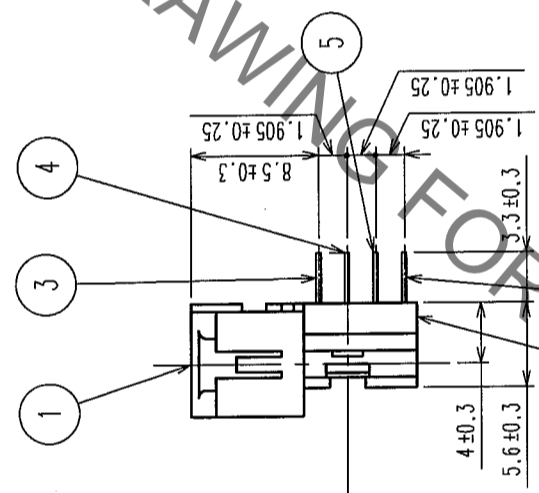
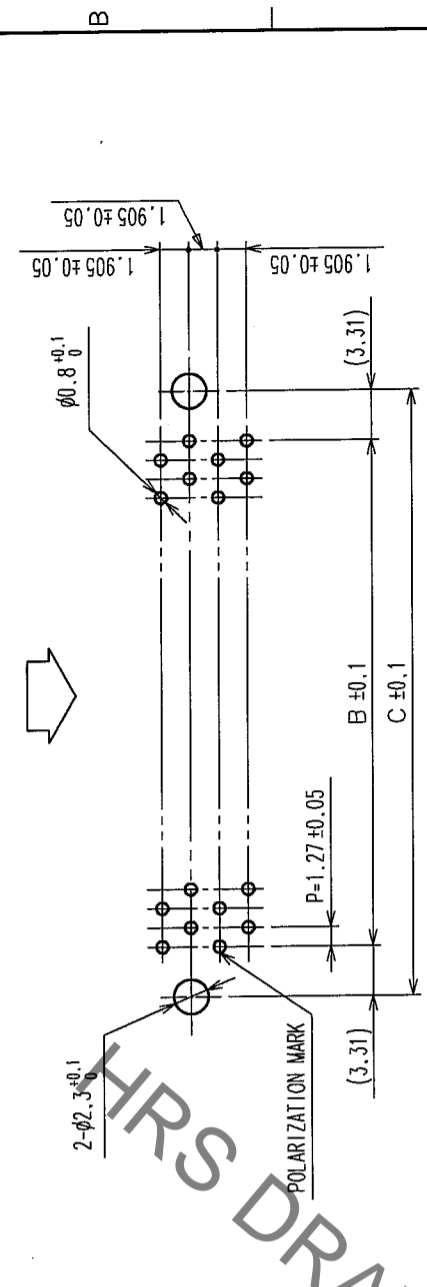
| COUNT | DESCRIPTION OF REVISIONS | BY | CHKD | DATE | COUNT | DESCRIPTION OF REVISIONS | BY | CHKD | DATE |
|-------|--------------------------|----|------|------|-------|--------------------------|----|------|------|
| | | | | | | | | | |
| | | | | | | | | | |
| | | | | | | | | | |

A B C D E F

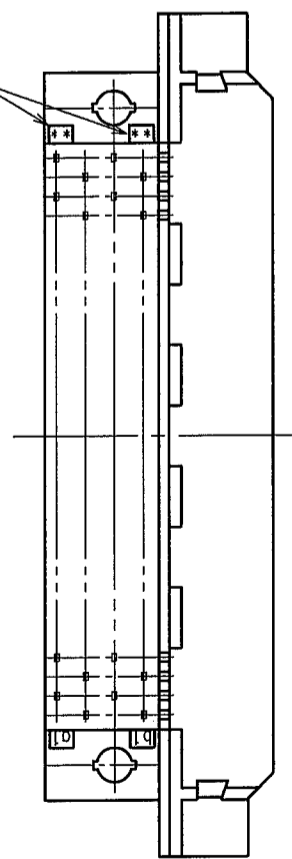
RECOMMEND PC BOARD HOLE PATTERN (MOUNTING SIDE)



MATING SIDE



D (INDICATIONS)



| PART No. | CODE No. | A | B | C | D |
|-----------------------|-----------------|-----|-------|-------|-------|
| FX2B-20PA-1.27DS(71) | CL572-0721-7-71 | 20 | 30.33 | 11.43 | 18.05 |
| FX2B-32PA-1.27DS(71) | CL572-0722-0-71 | 32 | 37.95 | 19.05 | 25.67 |
| FX2B-40PA-1.27DS(71) | CL572-0723-2-71 | 40 | 43.03 | 24.13 | 30.75 |
| FX2B-52PA-1.27DS(71) | CL572-0724-5-71 | 52 | 50.65 | 31.75 | 38.37 |
| FX2B-60PA-1.27DS(71) | CL572-0725-8-71 | 60 | 55.73 | 36.83 | 43.45 |
| FX2B-68PA-1.27DS(71) | CL572-0726-0-71 | 68 | 60.81 | 41.91 | 48.53 |
| FX2B-80PA-1.27DS(71) | CL572-0727-3-71 | 80 | 68.43 | 49.53 | 56.15 |
| FX2B-100PA-1.27DS(71) | CL572-0728-6-71 | 100 | 81.13 | 62.23 | 68.85 |

NOTES
 1 STANDOFF DIFFERS ACCORDING TO PRODUCTS.
 2 NUMBER OF PIN.
 3. THE DIMENSIONS IN PARENTHESES ARE FOR REFERENCE.

| NO. | MATERIAL | FINISH, | REMARKS | NO. | MATERIAL | FINISH, | REMARKS |
|------|-----------|---------|---------|-----|----------|-------------------------------|---------|
| 1, 2 | POLYAMIDE | BLACK | UL94V-0 | 3~6 | BRASS | CONTACT AREA: GOLD FLASH | |
| | | | | | | DIP AREA: TIN-PLATING 2μm min | |
| | | | | | | UNDER PLATING: NICKEL 1μm min | |

| CODE NO. (OLD) | CL | DESIGNED | CHECKED | APPROVED | RELEASED |
|----------------|----|------------|----------|----------|----------|
| | | I. OKAYAMA | H. OKAWA | H. OKAWA | |
| | | 04.06.02 | 04.06.14 | 04.06.14 | |

| DRAWING NO. | PART NO. |
|----------------|----------------------|
| EDC3-153963-21 | FX2B-**PA-1.27DS(71) |
| SCALE FREE | CODE NO. |
| UNITS mm | CL572 |

| | |
|-----|--|
| TO | |
| PCK | |