

NOTES:

1. MATERIALS:

HOUSING: GLASS-FILLED LIQUID CRYSTAL POLYMER (LCP),
UL94 V-0, COLOR:BLACK

TAIL ALIGNER: GLASS-FILLED LIQUID CRYSTAL POLYMER (LCP),
UL94 V-0, COLOR:BLACK

TERMINAL: PHOSPHOR BRONZE

SHIELD: STEEL

INSERT: BRASS

2. FINISHES:

TERMINAL: 0.05-0.25 MICROMETERS GOLD FLASH OVER 0.75 MICROMETERS
MINIMUM PALLADIUM NICKEL IN THE CRITICAL CONTACT AREA.
1.87 MICROMETERS MINIMUM TIN IN THE SOLDER TAIL AREA.
NICKEL UNDERPLATE OVERALL.

SHIELD: 3.8 MICROMETERS MINIMUM BRIGHT TIN OVER NICKEL.

INSERT: 2.54 MICROMETERS MINIMUM NICKEL.

3. PART PERFORMS TO MOLEX PRODUCT SPECIFICATION

PS-71425-9999.

4. PACKAGE PER PK-71430-0101.

5. APPLICABLE STANDARDS: EIA-3652 AND SFF-8441.

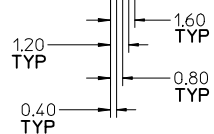
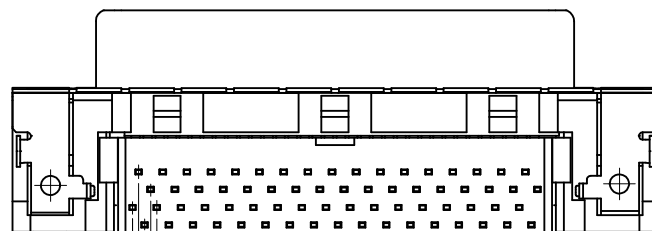
6. DATE CODE: YR/WK PER EIA-476-A.

7. TORQUE TO INSTALL SCREWLOCKS INTO THREADED INSERTS:

0.34 Nm MAXIMUM.

8. PRODUCT COMPLIES WITH COSMETIC SPECIFICATION PS-45499-002.

SEE BOTTOM VIEW FOR SURFACE CLASSIFICATIONS.



REV	DESCRIPTION	DATE
	APPR:SMILLER	2012/08/31
J	CHKD:MMOLFE	2012/05/29
	DRWN:BBARKER	2012/05/29
	EC NO: UCP2012-3896	
	FIX TAIL TOLERANCE	

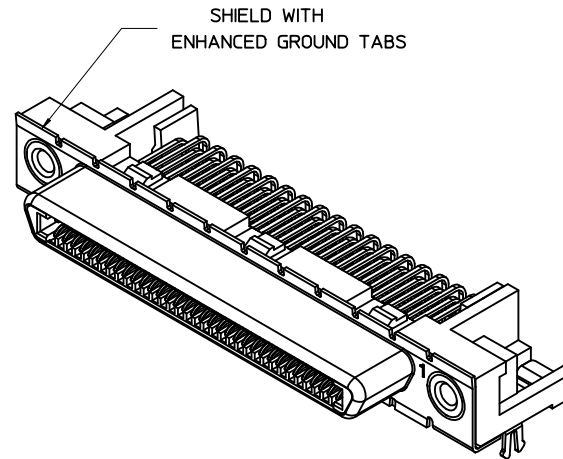
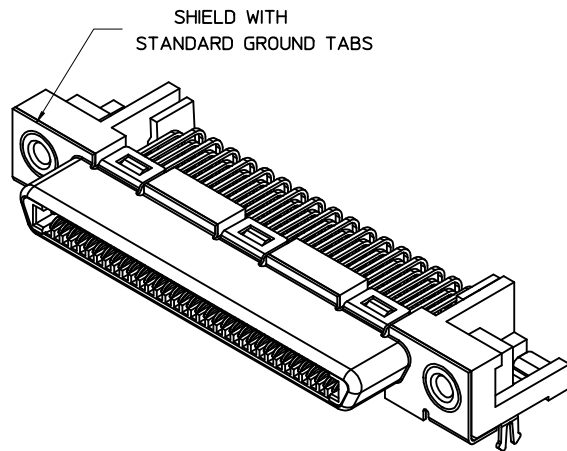
QUALITY SYMBOLS	▽=0
	▽=0
	▽=0

GENERAL TOLERANCES (UNLESS SPECIFIED)	
	mm
	INCH
4 PLACES	± 0.13
3 PLACES	± 0.25
2 PLACES	± 0.38
1 PLACE	± 0.51
0 PLACE	± 0.64
ANGULAR ±1/2°	
DRAFT WHERE APPLICABLE MUST REMAIN WITHIN DIMENSIONS	

DIMENSION STYLE	
MM ONLY	
DRAWN BY	DATE
RKADAMS	7/12/2004
CHECKED BY	DATE
BBARKER	7/12/2004
APPROVED BY	DATE
SMILLER	7/12/2004
MATERIAL NO.	
SEE SHEET 2	

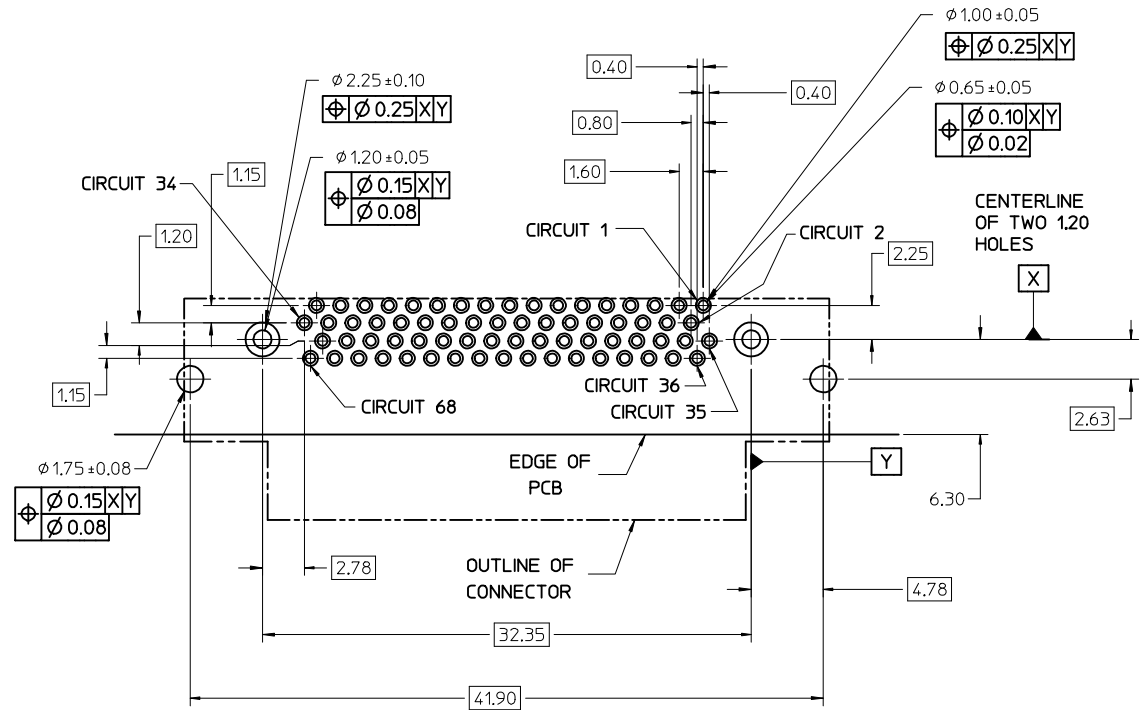
SCALE	DESIGN UNITS	THIRD ANGLE PROJECTION
4:1	METRIC	
TITLE		
VHDCI RIGHT ANGLE ASSEMBLY		
molex		
DOCUMENT NO.	SHEET NO.	
SD-71430-016	1 OF 3	
THIS DRAWING CONTAINS INFORMATION THAT IS PROPRIETARY TO MOLEX INCORPORATED AND SHOULD NOT BE USED WITHOUT WRITTEN PERMISSION		

PCB THICKNESS	PART NUMBER	TAIL LENGTH "T" (SEE FIGURE FOR TOLERANCE)	ENHANCED GROUND TABS	SCREWLOCKS
1.60	71430-9101	2.08	NO	NONE
1.60		2.08	NO	LOOSE IN BAGS
1.60	71430-9005	2.08	YES	NONE
1.60	71430-9008	2.08	YES	LOOSE IN BAGS
2.36		2.71	NO	NONE
2.36	71430-5006	2.71	NO	INSTALLED
2.36	71430-9268	2.71	NO	NONE
2.36	71430-5009	2.71	YES	INSTALLED
2.36		2.71	NO	LOOSE IN BAGS
2.36		2.71	YES	LOOSE IN BAGS



OPTIONAL SCREWLOCK
PART NUMBER 71433-0002

SEE SHEET 1 EC NO: UCP2012-3896 DRW:BBARKER 2012/05/29 CHKD:MMOLFE APPR:SMILLER 2012/08/31	QUALITY SYMBOLS = 0 = 0 = 0	GENERAL TOLERANCES (UNLESS SPECIFIED) <table border="1"> <thead> <tr> <th></th> <th>mm</th> <th>INCH</th> </tr> </thead> <tbody> <tr> <td>4 PLACES</td> <td>± .005</td> <td>± .0004</td> </tr> <tr> <td>3 PLACES</td> <td>± .008</td> <td>± .0003</td> </tr> <tr> <td>2 PLACES</td> <td>± 0.13</td> <td>± .005</td> </tr> <tr> <td>1 PLACE</td> <td>± 0.25</td> <td>± .010</td> </tr> <tr> <td>0 PLACE</td> <td>± .005</td> <td>± .0004</td> </tr> </tbody> </table>		mm	INCH	4 PLACES	± .005	± .0004	3 PLACES	± .008	± .0003	2 PLACES	± 0.13	± .005	1 PLACE	± 0.25	± .010	0 PLACE	± .005	± .0004	DIMENSION STYLE MM ONLY DRAWN BY DATE RKADAMS 7/12/2004 CHECKED BY DATE BBARKER 7/12/2004 APPROVED BY DATE SMILLER 7/12/2004	SCALE 4:1 DESIGN UNITS METRIC THIRD ANGLE PROJECTION	TITLE VHDCI RIGHT ANGLE ASSEMBLY 	MATERIAL NO. SEE TABLE SIZE C	DOCUMENT NO. SD-71430-016 SHEET NO. 2 OF 3
		mm	INCH																						
	4 PLACES	± .005	± .0004																						
	3 PLACES	± .008	± .0003																						
	2 PLACES	± 0.13	± .005																						
1 PLACE	± 0.25	± .010																							
0 PLACE	± .005	± .0004																							
DRAFT WHERE APPLICABLE MUST REMAIN WITHIN DIMENSIONS		THIS DRAWING CONTAINS INFORMATION THAT IS PROPRIETARY TO MOLEX INCORPORATED AND SHOULD NOT BE USED WITHOUT WRITTEN PERMISSION																							



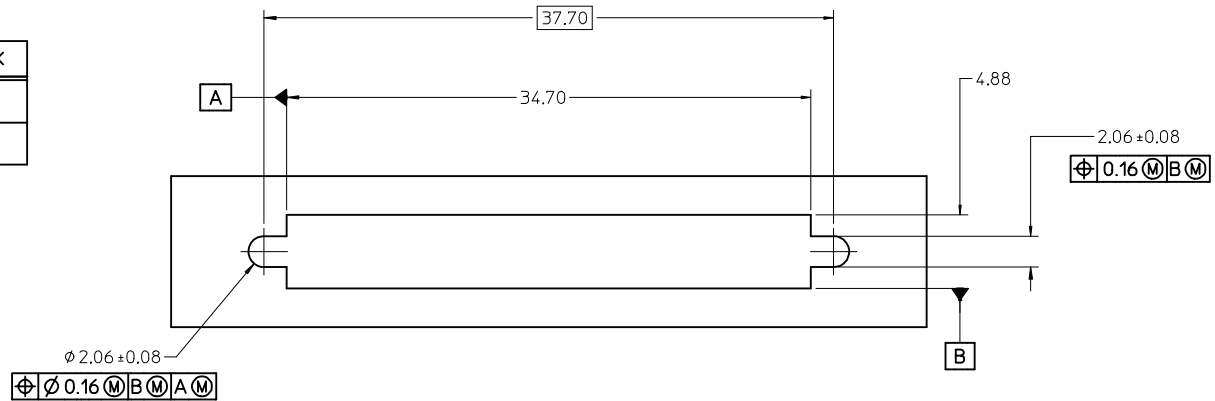
NOTES:

1. FOR FULL MATE WITH PLUG, PANEL THICKNESS SHOULD NOT EXCEED 1.0mm.

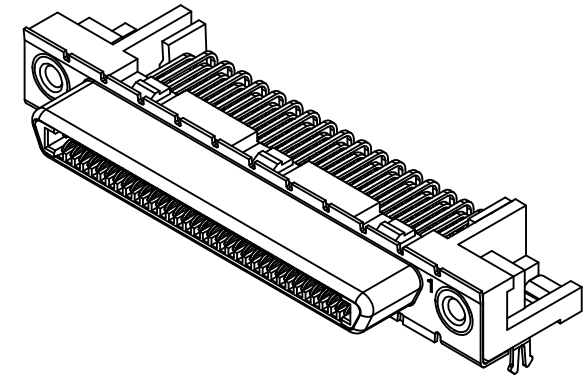
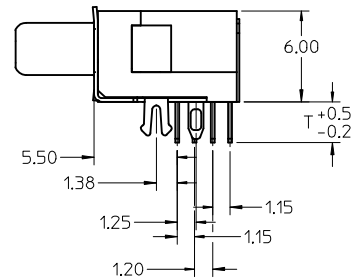
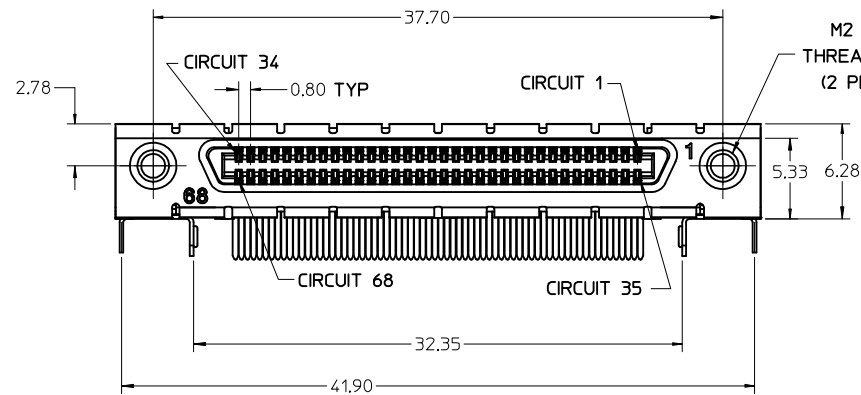
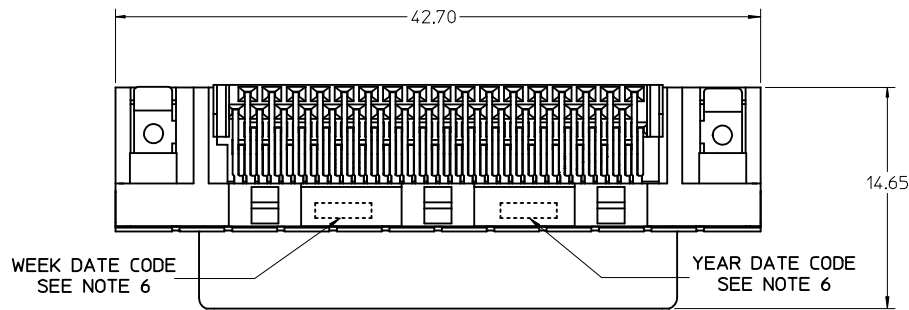
FUNCTIONAL MATING WITH MOLEX PLUG CAN STILL BE MAINTAINED WITH PANELS AS THICK AS 2.5mm (BUT PLUG AND RECEPTACLE WILL NOT BE FULLY MATED).

2. GUIDELINES FOR CHOOSING A MOLEX SCREWLOCK:

PANEL THICKNESS	RECOMMENDED SCREWLOCK
LESS THAN OR EQUAL TO 1.00 MM	71433-0002
1.01 TO 2.15 MM	71433-0010



SEE SHEET 1 EC NO: UCP2012-3896 DRWN:BBARKER 2012/05/29 CHKD:HWOLFE APPR:SMILLER 2012/08/31	QUALITY SYMBOLS $\nabla = 0$ $\nabla = 0$ $\nabla = 0$	GENERAL TOLERANCES (UNLESS SPECIFIED) <table border="1"> <thead> <tr> <th></th> <th>mm</th> <th>INCH</th> </tr> </thead> <tbody> <tr> <td>4 PLACES</td> <td>± 0.13</td> <td>± 0.005</td> </tr> <tr> <td>3 PLACES</td> <td>± 0.25</td> <td>± 0.010</td> </tr> <tr> <td>2 PLACES</td> <td>± 0.38</td> <td>± 0.015</td> </tr> <tr> <td>1 PLACE</td> <td>± 0.51</td> <td>± 0.020</td> </tr> <tr> <td>0 PLACE</td> <td>± 0.64</td> <td>± 0.025</td> </tr> </tbody> </table>		mm	INCH	4 PLACES	± 0.13	± 0.005	3 PLACES	± 0.25	± 0.010	2 PLACES	± 0.38	± 0.015	1 PLACE	± 0.51	± 0.020	0 PLACE	± 0.64	± 0.025	DIMENSION STYLE MM ONLY DRAWN BY: RKADAMS DATE: 7/12/2004 CHECKED BY: BBARKER DATE: 7/12/2004 APPROVED BY: SMILLER DATE: 7/12/2004	SCALE 4:1 TITLE VHCI RIGHT ANGLE ASSEMBLY	DESIGN UNITS METRIC THIRD ANGLE PROJECTION
		mm	INCH																				
	4 PLACES	± 0.13	± 0.005																				
	3 PLACES	± 0.25	± 0.010																				
2 PLACES	± 0.38	± 0.015																					
1 PLACE	± 0.51	± 0.020																					
0 PLACE	± 0.64	± 0.025																					
MATERIAL NO.		DOCUMENT NO.		molex																			
ANGULAR $\pm 1/2^\circ$		SEE SHEET 2		SD-71430-016																			
DRAFT WHERE APPLICABLE MUST REMAIN WITHIN DIMENSIONS		SIZE C		SHEET NO. 3 OF 3																			



NOTES:

1. MATERIALS:

HOUSING: GLASS-FILLED LIQUID CRYSTAL POLYMER (LCP),
UL94 V-0, COLOR:BLACK

TAIL ALIGNER: GLASS-FILLED LIQUID CRYSTAL POLYMER (LCP),
UL94 V-0, COLOR:BLACK

TERMINAL: PHOSPHOR BRONZE

SHIELD: STEEL

INSERT: BRASS

2. FINISHES:

TERMINAL: 0.05-0.25 MICROMETERS GOLD FLASH OVER 0.75 MICROMETERS
MINIMUM PALLADIUM NICKEL IN THE CRITICAL CONTACT AREA.
1.87 MICROMETERS MINIMUM TIN IN THE SOLDER TAIL AREA.
NICKEL UNDERPLATE OVERALL.

SHIELD: 3.8 MICROMETERS MINIMUM BRIGHT TIN OVER NICKEL.
INSERT: 2.54 MICROMETERS MINIMUM NICKEL.

**3. PART PERFORMS TO MOLEX PRODUCT SPECIFICATION
PS-71425-9999.**

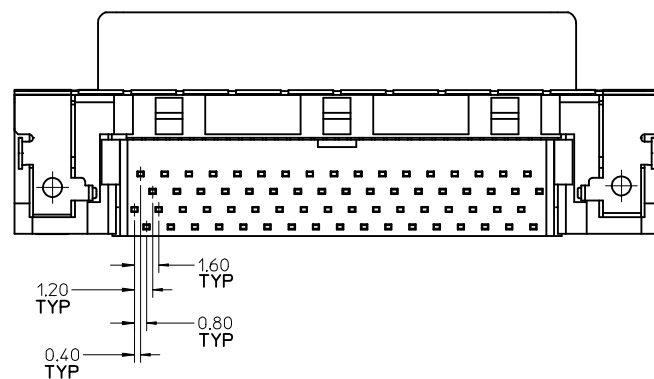
4. PACKAGE PER PK-71430-0101.

5. APPLICABLE STANDARDS: EIA-3652 AND SFF-8441.

6. DATE CODE: YR/WK PER EIA-476-A.

**7. TORQUE TO INSTALL SCREWLOCKS INTO THREADED INSERTS:
0.34 Nm MAXIMUM.**

**8. PRODUCT COMPLIES WITH COSMETIC SPECIFICATION PS-45499-002.
SEE BOTTOM VIEW FOR SURFACE CLASSIFICATIONS.**



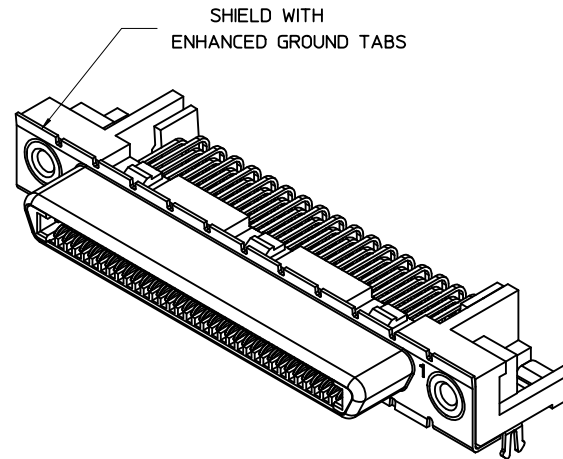
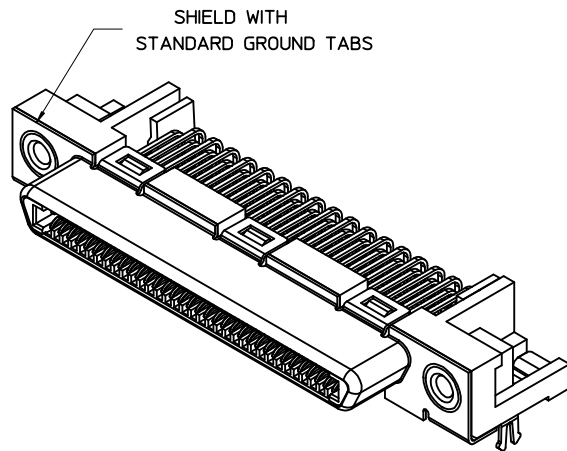
CLASS B

SEE NOTE 8

CLASS C

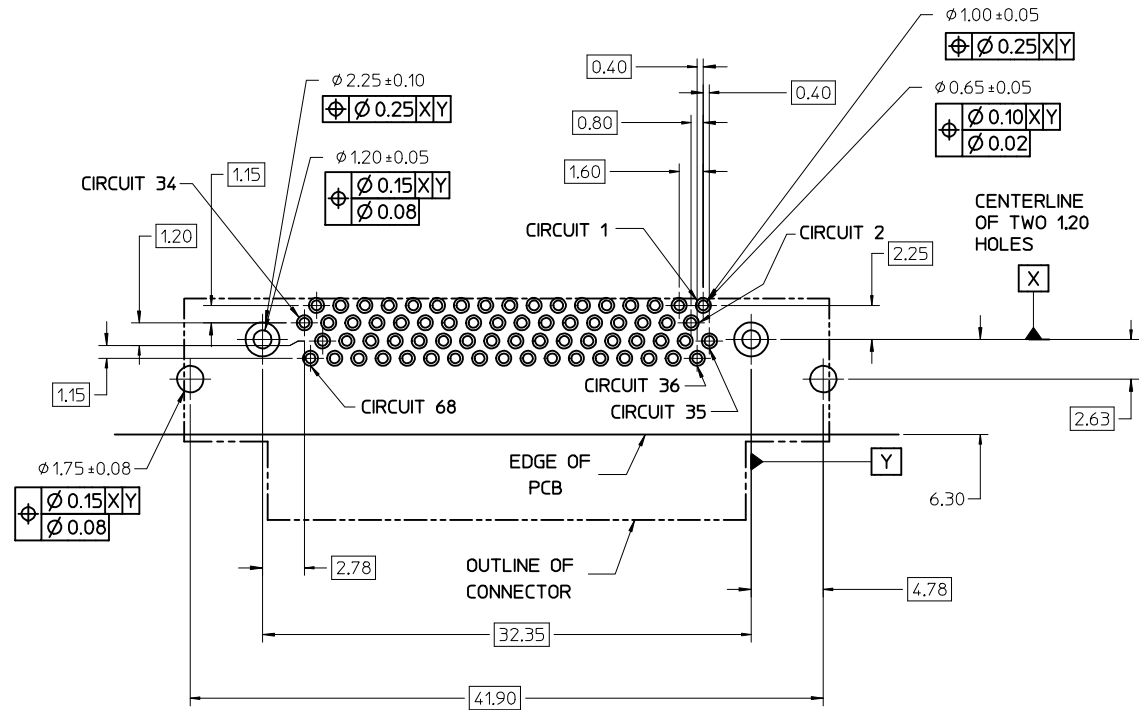
FIX TAIL TOLERANCE EC NO: UCP2012-3896 DRWN:BBARKER 2012/05/29 CHKD:MMOLFE APPR:SMILLER 2012/08/31	QUALITY SYMBOLS = 0 = 0.13 = 0.25	GENERAL TOLERANCES (UNLESS SPECIFIED) <table border="1"> <tr> <th></th> <th>mm</th> <th>INCH</th> </tr> <tr> <td>4 PLACES</td> <td>± ---</td> <td>± ---</td> </tr> <tr> <td>3 PLACES</td> <td>± ---</td> <td>± ---</td> </tr> <tr> <td>2 PLACES</td> <td>± 0.13</td> <td>± ---</td> </tr> <tr> <td>1 PLACE</td> <td>± 0.25</td> <td>± ---</td> </tr> <tr> <td>0 PLACE</td> <td>±</td> <td>±</td> </tr> </table>		mm	INCH	4 PLACES	± ---	± ---	3 PLACES	± ---	± ---	2 PLACES	± 0.13	± ---	1 PLACE	± 0.25	± ---	0 PLACE	±	±	DIMENSION STYLE MM ONLY DRAWN BY: RKADAMS DATE: 7/12/2004 CHECKED BY: BBARKER DATE: 7/12/2004 APPROVED BY: SMILLER DATE: 7/12/2004	SCALE 4:1	DESIGN UNITS METRIC	THIRD ANGLE PROJECTION
		mm	INCH																					
	4 PLACES	± ---	± ---																					
	3 PLACES	± ---	± ---																					
2 PLACES	± 0.13	± ---																						
1 PLACE	± 0.25	± ---																						
0 PLACE	±	±																						
		ANGULAR ±1/2°	TITLE VHDCI RIGHT ANGLE ASSEMBLY																					
		DRAFT WHERE APPLICABLE MUST REMAIN WITHIN DIMENSIONS	MATERIAL NO. SEE SHEET 2		DOCUMENT NO. SD-71430-016	SHEET NO. 1 OF 3																		
THIS DRAWING CONTAINS INFORMATION THAT IS PROPRIETARY TO MOLEX INCORPORATED AND SHOULD NOT BE USED WITHOUT WRITTEN PERMISSION																								

PCB THICKNESS	PART NUMBER	TAIL LENGTH *T* (SEE FIGURE FOR TOLERANCE)	ENHANCED GROUND TABS	SCREWLOCKS
1.60	71430-9101	2.08	NO	NONE
1.60		2.08	NO	LOOSE IN BAGS
1.60	71430-9005	2.08	YES	NONE
1.60	71430-9008	2.08	YES	LOOSE IN BAGS
2.36		2.71	NO	NONE
2.36	71430-5006	2.71	NO	INSTALLED
2.36	71430-9268	2.71	NO	NONE
2.36	71430-5009	2.71	YES	INSTALLED
2.36		2.71	NO	LOOSE IN BAGS
2.36		2.71	YES	LOOSE IN BAGS



OPTIONAL SCREWLOCK
PART NUMBER 71433-0002

SEE SHEET 1 EC NO: UCP2012-3896 DRW:BBARKER 2012/05/29 CHKD:MMOLFE APPR:SMILLER 2012/08/31	QUALITY SYMBOLS = 0 = 0 = 0	GENERAL TOLERANCES (UNLESS SPECIFIED) <table border="1"> <thead> <tr> <th></th> <th>mm</th> <th>INCH</th> </tr> </thead> <tbody> <tr> <td>4 PLACES</td> <td>± .---</td> <td>± .---</td> </tr> <tr> <td>3 PLACES</td> <td>± .---</td> <td>± .---</td> </tr> <tr> <td>2 PLACES</td> <td>± 0.13</td> <td>± .---</td> </tr> <tr> <td>1 PLACE</td> <td>± 0.25</td> <td>± .---</td> </tr> <tr> <td>0 PLACE</td> <td>±</td> <td>±</td> </tr> </tbody> </table>		mm	INCH	4 PLACES	± .---	± .---	3 PLACES	± .---	± .---	2 PLACES	± 0.13	± .---	1 PLACE	± 0.25	± .---	0 PLACE	±	±	DIMENSION STYLE MM ONLY DRAWN BY DATE RKADAMS 7/12/2004 CHECKED BY DATE BBARKER 7/12/2004 APPROVED BY DATE SMILLER 7/12/2004	SCALE 4:1 DESIGN UNITS METRIC THIRD ANGLE PROJECTION	TITLE VHDCI RIGHT ANGLE ASSEMBLY 	MATERIAL NO. SEE TABLE SIZE C	DOCUMENT NO. SD-71430-016 SHEET NO. 2 OF 3
		mm	INCH																						
	4 PLACES	± .---	± .---																						
	3 PLACES	± .---	± .---																						
	2 PLACES	± 0.13	± .---																						
1 PLACE	± 0.25	± .---																							
0 PLACE	±	±																							
DRAFT WHERE APPLICABLE MUST REMAIN WITHIN DIMENSIONS		THIS DRAWING CONTAINS INFORMATION THAT IS PROPRIETARY TO MOLEX INCORPORATED AND SHOULD NOT BE USED WITHOUT WRITTEN PERMISSION																							



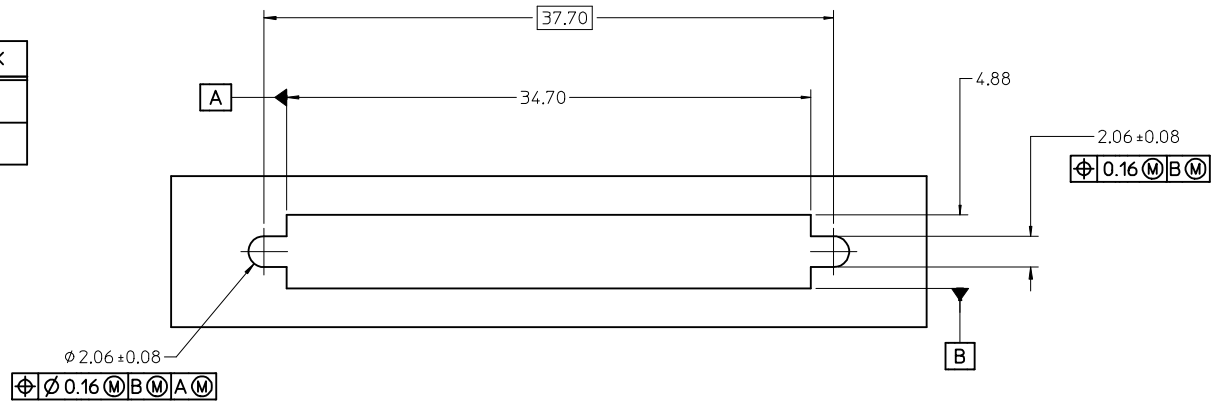
NOTES:

1. FOR FULL MATE WITH PLUG, PANEL THICKNESS SHOULD NOT EXCEED 1.0mm.

FUNCTIONAL MATING WITH MOLEX PLUG CAN STILL BE MAINTAINED WITH PANELS AS THICK AS 2.5mm (BUT PLUG AND RECEPTACLE WILL NOT BE FULLY MATED).

2. GUIDELINES FOR CHOOSING A MOLEX SCREWLOCK:

PANEL THICKNESS	RECOMMENDED SCREWLOCK
LESS THAN OR EQUAL TO 1.00 MM	71433-0002
1.01 TO 2.15 MM	71433-0010



SEE SHEET 1 EC NO: UCP2012-3896 DRWN:BBARKER 2012/05/29 CHKD:HWOLFE APPR:SMILLER 2012/08/31	QUALITY SYMBOLS $\nabla = 0$ $\nabla = 0$ $\nabla = 0$	GENERAL TOLERANCES (UNLESS SPECIFIED) <table border="1"> <thead> <tr> <th></th> <th>mm</th> <th>INCH</th> </tr> </thead> <tbody> <tr> <td>4 PLACES</td> <td>± 0.13</td> <td>± 0.005</td> </tr> <tr> <td>3 PLACES</td> <td>± 0.25</td> <td>± 0.010</td> </tr> <tr> <td>2 PLACES</td> <td>± 0.50</td> <td>± 0.020</td> </tr> <tr> <td>1 PLACE</td> <td>± 1.00</td> <td>± 0.040</td> </tr> <tr> <td>0 PLACE</td> <td>± 2.00</td> <td>± 0.080</td> </tr> </tbody> </table>		mm	INCH	4 PLACES	± 0.13	± 0.005	3 PLACES	± 0.25	± 0.010	2 PLACES	± 0.50	± 0.020	1 PLACE	± 1.00	± 0.040	0 PLACE	± 2.00	± 0.080	DIMENSION STYLE MM ONLY DRAWN BY: RKADAMS DATE: 7/12/2004 CHECKED BY: BBARKER DATE: 7/12/2004 APPROVED BY: SMILLER DATE: 7/12/2004	SCALE: 4:1 DESIGN UNITS: METRIC THIRD ANGLE PROJECTION
		mm	INCH																			
	4 PLACES	± 0.13	± 0.005																			
	3 PLACES	± 0.25	± 0.010																			
2 PLACES	± 0.50	± 0.020																				
1 PLACE	± 1.00	± 0.040																				
0 PLACE	± 2.00	± 0.080																				
DRAFT WHERE APPLICABLE MUST REMAIN WITHIN DIMENSIONS		MATERIAL NO. SEE SHEET 2 DOCUMENT NO. SD-71430-016	TITLE: VHCI RIGHT ANGLE ASSEMBLY molex SHEET NO. 3 OF 3																			
THIS DRAWING CONTAINS INFORMATION THAT IS PROPRIETARY TO MOLEX INCORPORATED AND SHOULD NOT BE USED WITHOUT WRITTEN PERMISSION																						