

Banana Plug - Insulated Stacking Single Type



INCHES (MILLIMETERS)
CUSTOMER DRAWINGS AVAILABLE UPON REQUEST

SPECIFICATIONS

Plug Body: Brass per QQ-B-626D

Plug Spring: Nickel silver per QQ-C-585

Finish: Nickel

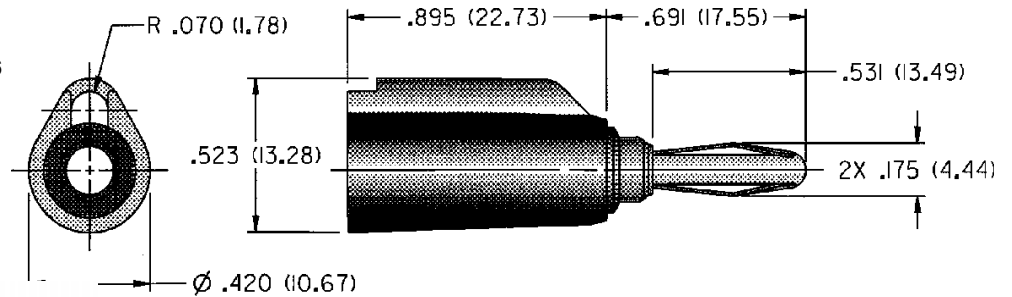
Insulated Handle: Nylon 6/6 per ASTM D4066

RATINGS

Current: 15 amps

Breakdown Voltage: 3500 Vrms minimum

Contact Resistance: 0.010 ohms maximum



NICKEL PLATING
108-1083-001 Black

For Standard Banana Jack: .166 (4.23) Diameter

FEATURES:

- Built in strain relief for long life
- Solder stud accepts up to 16 gauge wire
- Accepts standard banana plug from rear
- Nylon UL approved for self extinguishing