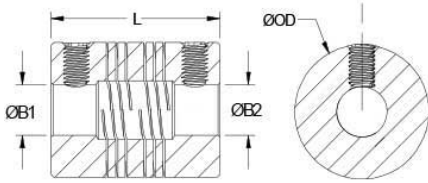




PSR6-1.5-1.5-SS

Ruland PSR6-1.5-1.5-SS, 3/32" x 3/32" Four Beam Coupling, Stainless Steel, Set Screw Style, 0.375" OD, 0.563" Length




Description

Ruland PSR6-1.5-1.5-SS is a set screw style four beam coupling with 0.0938" x 0.0938" bores, 0.375" OD, and 0.563" length. It is machined from a single piece of material and feature two sets of two spiral cuts. This gives it higher torque capacity, lower windup, and larger body sizes than single beam couplings. PSR6-1.5-1.5-SS is zero-backlash and has a balanced design for reduced vibration at high speeds of up to 6,000 RPM. This four beam spiral coupling is zero-backlash and has a balanced design for reduced vibration at high speeds of up to 6,000 RPM. All hardware is metric and tests beyond DIN 912 12.9 standards for maximum torque capabilities. PSR6-1.5-1.5-SS is made from 303 stainless steel for increased torque capacity. It is machined from bar stock that is sourced exclusively from North American mills and RoHS3 and REACH compliant. PSR6-1.5-1.5-SS is manufactured in our Marlborough, MA factory under strict controls using proprietary processes.

Product Specifications

Bore (B1)	0.0938 in	Small Bore (B2)	0.0938 in
B1 Max Shaft Penetration	0.265 in	B2 Max Shaft Penetration	0.265 in
Outer Diameter (OD)	0.375 in	Bore Tolerance	+0.001 in / -0.000 in
Length (L)	0.563 in	Recommended Shaft Tolerance	+0.0000 in / -0.0005 in
Forged Set Screw	M2	Screw Material	Alloy Steel
Hex Wrench Size	0.9 mm	Screw Finish	Black Oxide
Seating Torque	0.21 Nm	Number of Screws	2 ea
Dynamic Torque Reversing	1.875 lb-in	Angular Misalignment	3°
Dynamic Torque Non-Reversing	3.75 lb-in	Parallel Misalignment	0.008 in
Static Torque	7.5 lb-in	Axial Motion	0.005 in
Torsional Stiffness	0.751 Deg/lb-in	Moment of Inertia	0.0003 lb-in ²
Maximum Speed	6,000 RPM	Full Bearing Support Required?	Yes
Material Specification	Type 303 Austenitic, Non-Magnetic Bar	Temperature	-40°F to 350°F (-40°C to 176°C)
Finish Specification	Bright, No Plating	Manufacturer	Ruland Manufacturing
Country of Origin	USA	Weight (lbs)	0.014200
UPC	634529051481	Tariff Code	8483.60.8000
UNSPC	31163003		

- Note 1** Torque ratings are at maximum misalignment.
- Note 2** Performance ratings are for guidance only. The user must determine suitability for a particular application.
- Note 3** Torque ratings for the couplings are based on the physical limitations/failure point of the machined beams. Under normal/typical conditions the hubs are capable of holding up to the rated torque of the machined beams. In some cases, especially when the smallest standard bores are used or where shafts are undersized, slippage on the shaft is possible below the rated torque of the machined beams. Please consult technical support for more assistance.

Prop 65  **WARNING** This product can expose you to chemicals including Ethylene Thiourea and Nickel (metallic), known to the State of California to cause cancer, and Ethylene Thiourea known to the State of California to cause birth defects or other reproductive harm. For more information go to www.P65Warnings.ca.gov.

Installation Instructions

1. Align the bores of the PSR6-1.5-1.5-SS four beam coupling on the shafts that are to be joined and determine if the misalignment parameters are within the limits of the coupling. (*Angular Misalignment: 3°, Parallel Misalignment: 0.008 in, Axial Motion: 0.005 in*)

2. Fully tighten the M2 screws on one hub to the recommended seating torque of 0.21 Nm using a 0.9 mm hex torque wrench.
 3. Before tightening the screws on the second hub, rotate the coupling by hand to allow it to reach its free length.
 4. Tighten the screws on the second hub to the recommended seating torque. Make sure the coupling remains axially relaxed and the misalignment angle remains centered along the length of the coupling.
 5. The shafts may extend into the relieved portion of the bore as long as it does not exceed the shaft penetration length of 0.265 in.
-