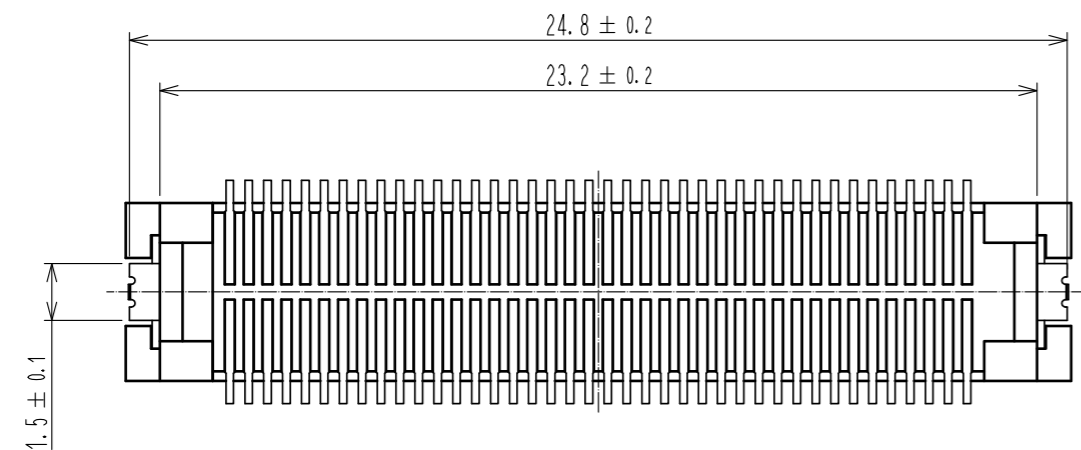
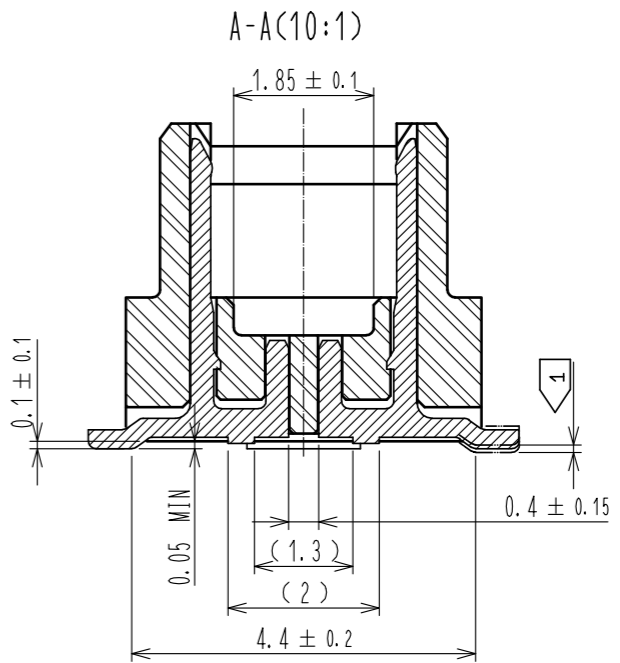
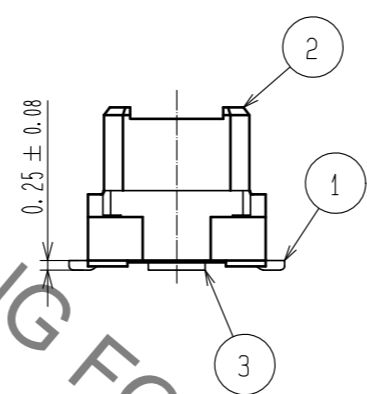
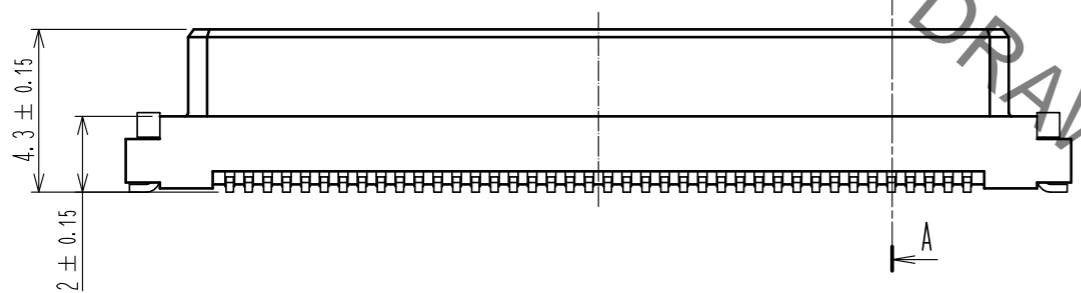
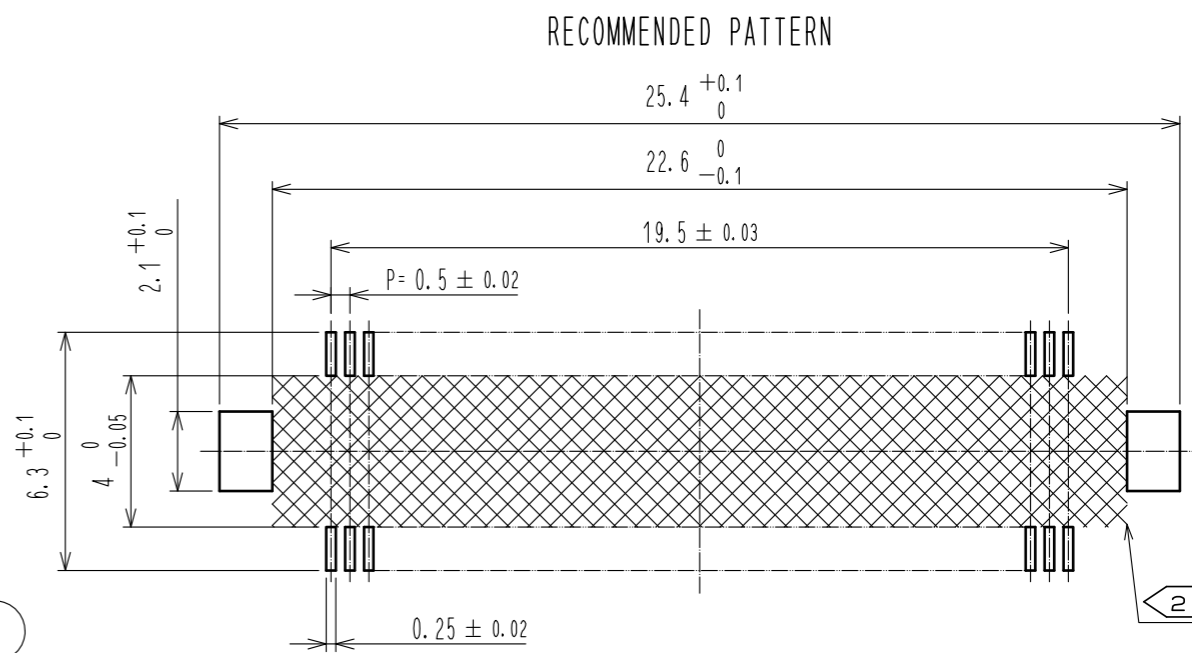
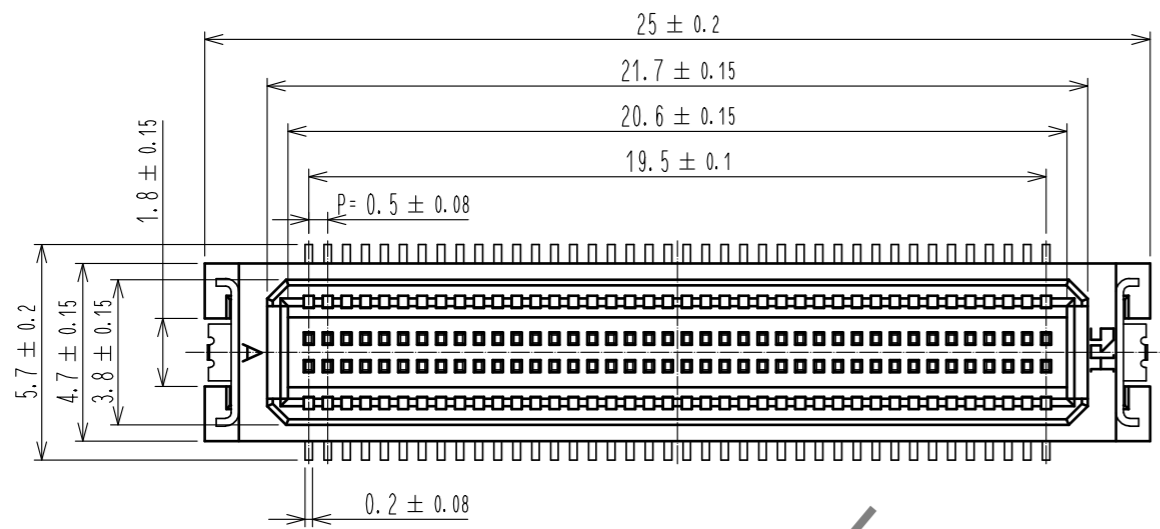


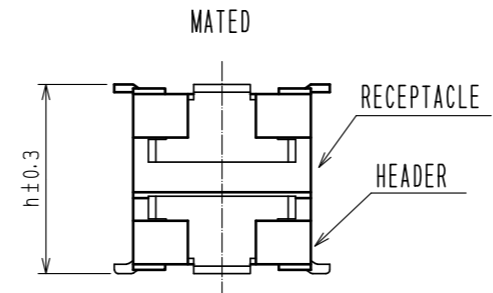
May.1.2023 Copyright 2023 HIROSE ELECTRIC CO., LTD. All Rights Reserved.
In case of consideration for using Automotive equipment / device which demand high reliability, kindly contact our sales window correspondents.



HRS DRAWING FOR REFERENCE

NOTES
 ① LEAD CO-PLANARITY INCLUDE REINFORCED METAL FITTINGS SHALL BE 0.1mm MAX.
 ② IF THE RESIST PROCESSING HAS NOT MADE, IT HAS POSSIBILITY THAT THE TERMINAL TOUCHES WITH AREA. PLEASE BE NOTED THIS POINT.

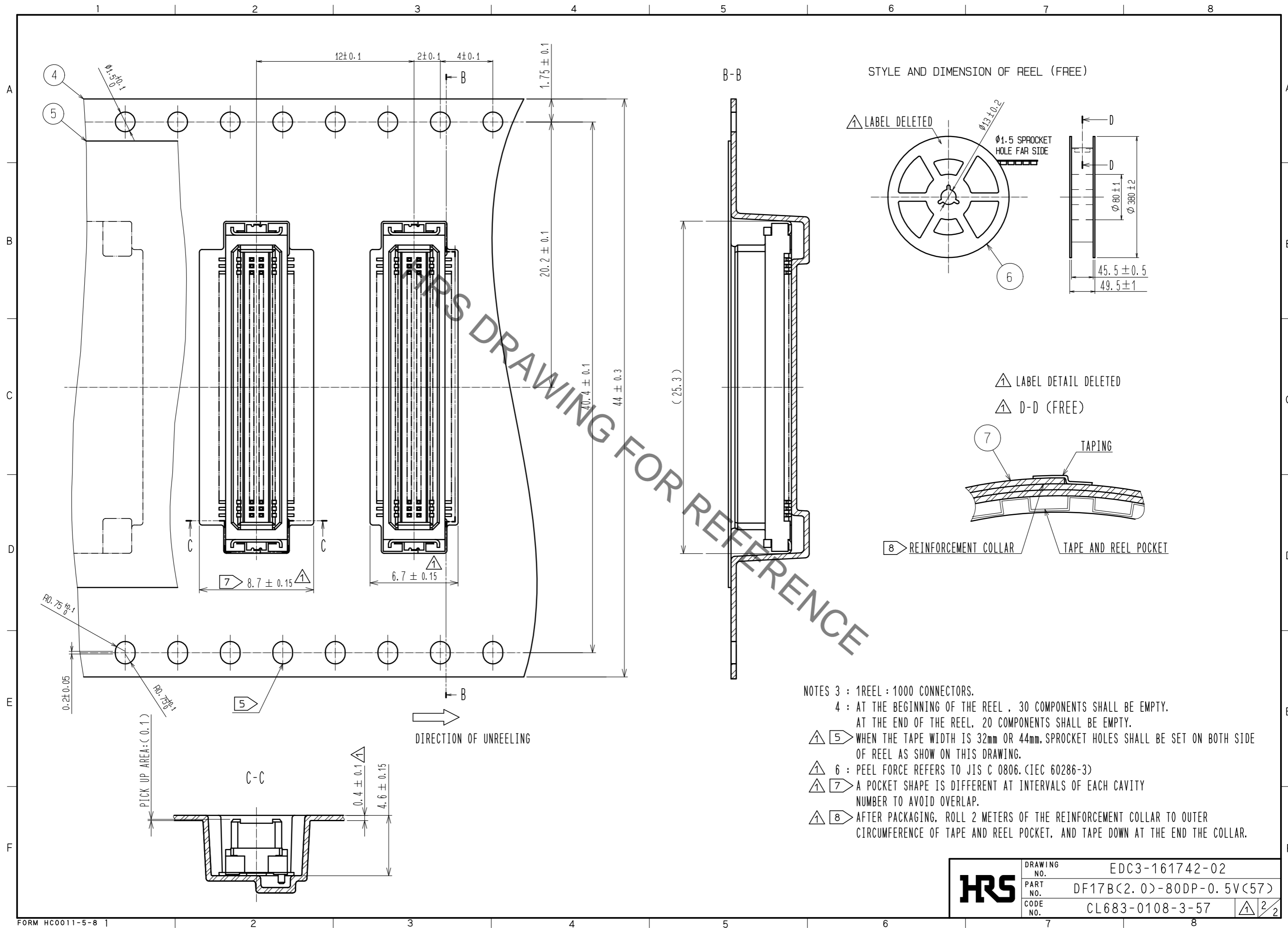
MATED HIGHT(h)	RECEPTACLE NO.	DF17#(3.0)-80DS-0.5V(**)	DF17#(4.0)-80DS-0.5V(**)
	5	6	
HEADER NO.	DF17B(2.0)-80DP-0.5V(57)		



NO.	MATERIAL	FINISH . REMARKS	NO.	MATERIAL	FINISH . REMARKS
2	POLYAMIDE (PA6T)	WHITE BEIGE . UL94V-0	7	PS	CLEAR (REINFORCEMENT COLLAR)
1	PHOSPHER BRONZE	CONTACT AREA : GOLD PLATED 0.1μm min LEAD AREA : TIN PLATED 1μm min UNDER PLATING : NICKEL 1μm min	6	PS	BLACK (PLASTIC REEL)
			5	POLYESTER	CLEAR (COVER TAPE)
			4	PS	CLEAR (EMBOSSED CARRIER TAPE)
			3	PHOSPHER BRONZE	TIN PLATED 1μm min UNDER PLATING : NICKEL 1μm min

UNITS mm		SCALE 5 : 1	COUNT 11	DESCRIPTION OF REVISIONS DIS-H-00006096	DESIGNED RH. KITAGAWA	CHECKED TS. MIYAZAKI	DATE 20200702
HRS HIROSE ELECTRIC CO., LTD.		APPROVED : KH. IKEDA	20080916	DRAWING NO. EDC3-161742-02			
		CHECKED : TS. MIYAZAKI	20080916	PART NO. DF17B(2.0)-80DP-0.5V(57)			
		DESIGNED : TY. YAMASAKI	20080819	CODE NO. CL683-0108-3-57			
		DRAWN : TY. YAMASAKI	20080819	①/2			

May.1.2023 Copyright 2023 HIROSE ELECTRIC CO., LTD. All Rights Reserved.
 In case of consideration for using Automotive equipment / device which demand high reliability, kindly contact our sales window correspondents.



- NOTES 3 : 1 REEL : 1000 CONNECTORS.
 4 : AT THE BEGINNING OF THE REEL , 30 COMPONENTS SHALL BE EMPTY.
 AT THE END OF THE REEL, 20 COMPONENTS SHALL BE EMPTY.
- ① 5 WHEN THE TAPE WIDTH IS 32mm OR 44mm, SPROCKET HOLES SHALL BE SET ON BOTH SIDE OF REEL AS SHOW ON THIS DRAWING.
 - ① 6 : PEEL FORCE REFERS TO JIS C 0806. (IEC 60286-3)
 - ① 7 A POCKET SHAPE IS DIFFERENT AT INTERVALS OF EACH CAVITY NUMBER TO AVOID OVERLAP.
 - ① 8 AFTER PACKAGING, ROLL 2 METERS OF THE REINFORCEMENT COLLAR TO OUTER CIRCUMFERENCE OF TAPE AND REEL POCKET, AND TAPE DOWN AT THE END THE COLLAR.

HRS	DRAWING NO.	EDC3-161742-02
	PART NO.	DF17B(2.0)-80DP-0.5V(57)
	CODE NO.	CL683-0108-3-57
		① 2/2