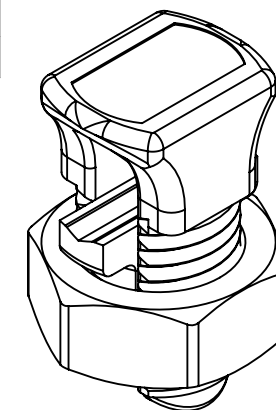
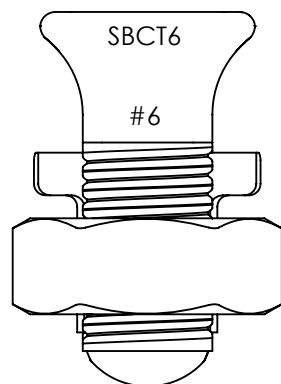
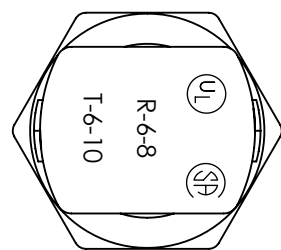
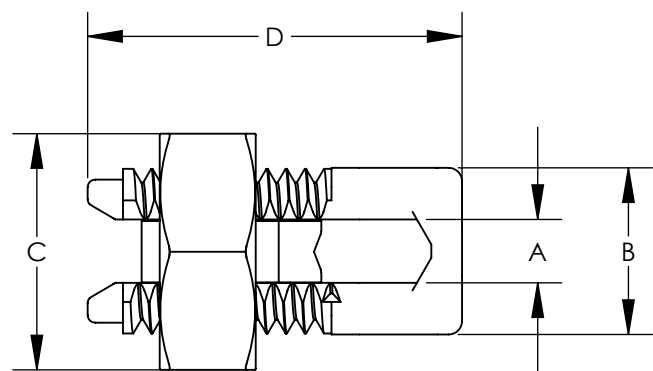


NOTES:

1. HIGH STRENGTH ELECTROLYTIC COPPER HIGHLY RESISTANT TO CORROSION AND SEASON CRACKING.
2. ELECTRO-TIN PLATED BOLT. NUT SPACER AND PRESSURE BAR.
3. WHEN CONNECTING ALUMINUM OR ACSR WIRE, USE OF PANDUIT OXIDE JOINT COMPOUND CMP-100 IS RECOMMENDED.
4. UL LISTED & CSA CERTIFIED (FOR APPLICABLE PARTS) WITH COPPER AND ALUMINUM CABLE.
5. PARTS ARE UL LISTED TO UL467 AND UL486. PARTS ARE CSA CERTIFIED.
6. PARTS ARE SUITABLE FOR DIRECT BURIAL.

PART NUMBER	COPPER & ALUMINUM CONDUCTOR								APPROXIMATE DIMENSIONS - INCHES				REQUIRED TORQUE (IN-LB)
	MAXIMUM RUN TO MAXIMUM TAP		MINIMUM RUN TO MINIMUM TAP		MAXIMUM RUN TO MINIMUM TAP		MINIMUM EQUAL		A	B	C	D	
	RUN	TAP	RUN	TAP	RUN	TAP	RUN	TAP					
SBCT8	6 SOL	6 SOL	8 STR 8 SOL	14 STR 14 SOL	6 STR 6 SOL	14 STR 14 SOL	8 STR 8 SOL	8 STR 8 SOL	0.16	0.41	0.63	1.06	165
SBCT6	6 STR 6 SOL	6 STR 6 SOL	8 STR 8 SOL	10 STR 10 SOL	6 STR 6 SOL	10 STR 10 SOL	8 STR 8 SOL	8 STR 8 SOL	0.21	0.49	0.68	1.10	165
SBCT3	4 STR 4 SOL	4 STR 4 SOL	6 STR 6 SOL	10 STR 10 SOL	4 STR 4 SOL	10 STR 10 SOL	8 STR 8 SOL	8 STR 8 SOL	0.27	0.58	0.81	1.24	275
SBCT2	2 STR 2 SOL	2 STR 2 SOL	6 STR 6 SOL	14 STR 14 SOL	2 STR 2 SOL	14 STR 14 SOL	6 STR 6 SOL	6 STR 6 SOL	0.31	0.60	0.86	1.45	275
SBCT1/0	1/0 STR 1/0 SOL	1/0 STR 1/0 SOL	2 STR 2 SOL	10 STR 10 SOL	1/0 STR 1/0 SOL	10 STR 10 SOL	4 STR 4 SOL	4 STR 4 SOL	0.37	0.75	0.93	1.73	385
SBCT2/0	2/0 STR 2/0 SOL	2/0 STR 2/0 SOL	1 STR 1 SOL	8 STR 8 SOL	2/0 STR 2/0 SOL	8 STR 8 SOL	2 STR 2 SOL	2 STR 2 SOL	0.42	0.79	1.05	1.71	385

PART NUMBER	COPPER CONDUCTOR								APPROXIMATE DIMENSIONS - INCHES				REQUIRED TORQUE (IN-LB)
	MAXIMUM RUN TO MAXIMUM TAP		MINIMUM RUN TO MINIMUM TAP		MAXIMUM RUN TO MINIMUM TAP		MINIMUM EQUAL		A	B	C	D	
	RUN	TAP	RUN	TAP	RUN	TAP	RUN	TAP					
SBCT3/0	3/0 STR 3/0 SOL	3/0 STR 3/0 SOL	2/0 STR 2/0 SOL	8 STR 8 SOL	3/0 STR 3/0 SOL	8 STR 8 SOL	1 STR 1 SOL	1 STR 1 SOL	0.53	0.95	1.25	2.12	500
SBCT250	250 STR	250 STR	4/0 STR 4/0 SOL	8 STR 8 SOL	250 STR	8 STR	1 STR 1 SOL	1 STR 1 SOL	0.58	1.03	1.36	2.22	650
SBCT350	350 STR	350 STR	350 STR	1/0 STR	350 STR	1/0 STR	2/0 STR 2/0 SOL	2/0 STR 2/0 SOL	0.70	1.17	1.49	2.55	650
SBCT500	500 STR	500 STR	400 STR	2/0 STR	500 STR	2/0 STR	300 STR	300 STR	0.82	1.32	1.74	2.95	825



REV	DATE	BY	CHK	APR	DESCRIPTION	ECN
06	4/21	JHNU	JHNU	JADE	REVISED TABLE	098940
05	10/15	JHNU	JHNU	RGB	REVISED MARKING LOCATION ADDED NOTE TO SPECIFY PARTS ARE UL 486 AND UL467	N10850BL-C41511
04	3/13	JHNU	JHNU	RGB	REVISED TITLE BLOCK	N10850BL-C41511

TITLE				SBCT SERIES - COPPER DUAL RATED SPLIT BOLT CONNECTOR CUSTOMER DRAWING			
ITEM REVISION NAME				N10850BL-C41151/06			
DATASET FILE NAME				C41511/06.SLDDRW			
UNLESS OTHERWISE SPECIFIED, DIMENSIONAL TOLERANCES ARE: IN [mm]				MATERIAL			
.X ±				.XXX ±			
.XX ±				ANGLES ±			
THIRD ANGLE PROJECTION				DRAWING NUMBER			
C41511				C41511			
DRAWN BY				DATE			
JHNU				5/07			
CHK				SCALE			
JAC				N/A			
SHEET 1 OF 1				SIZE			
				B			



SEE NOTES

C41511

SHEET 1 OF 1

B