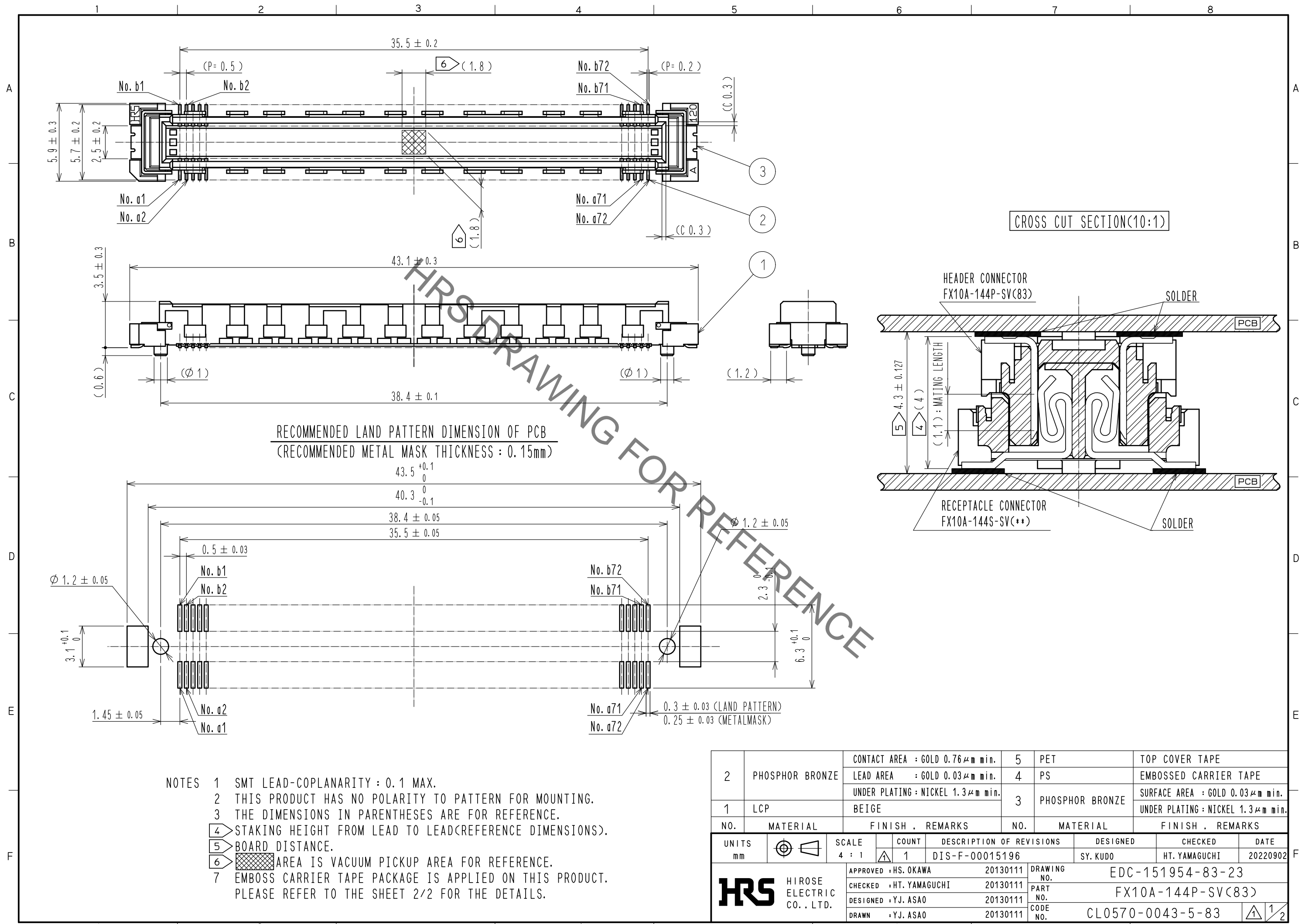


Apr.1.2023 Copyright 2023 HIROSE ELECTRIC CO., LTD. All Rights Reserved.
In case of consideration for using Automotive equipment / device which demand high reliability, kindly contact our sales window correspondents.

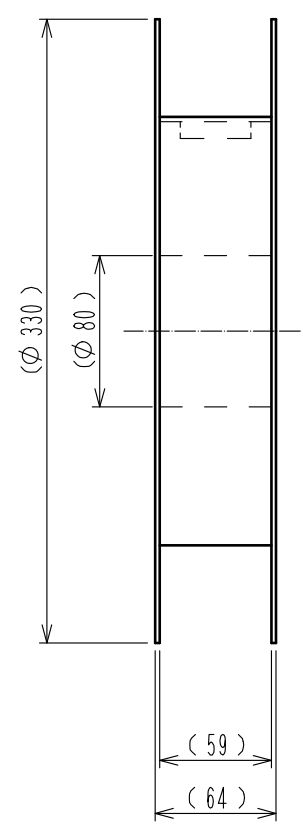
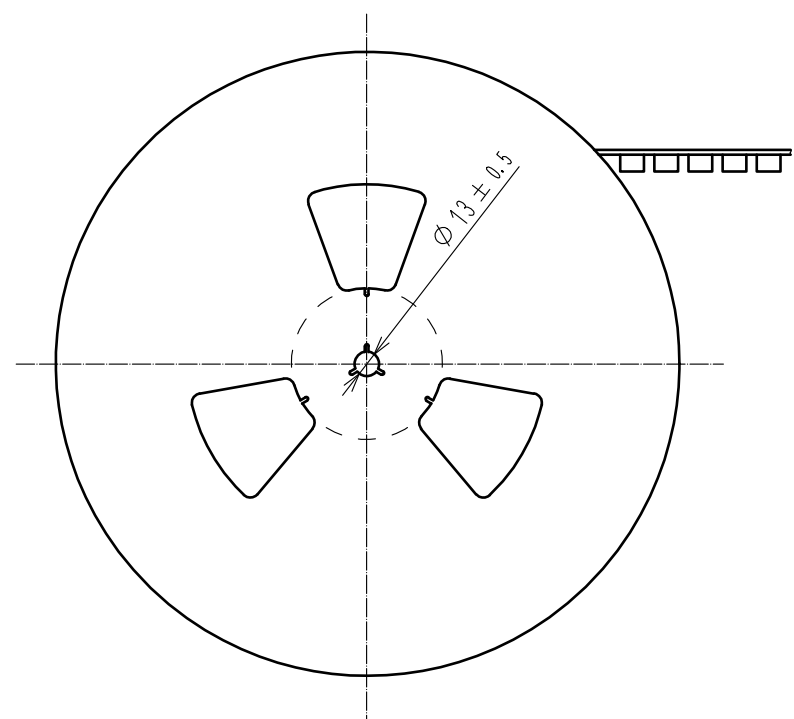
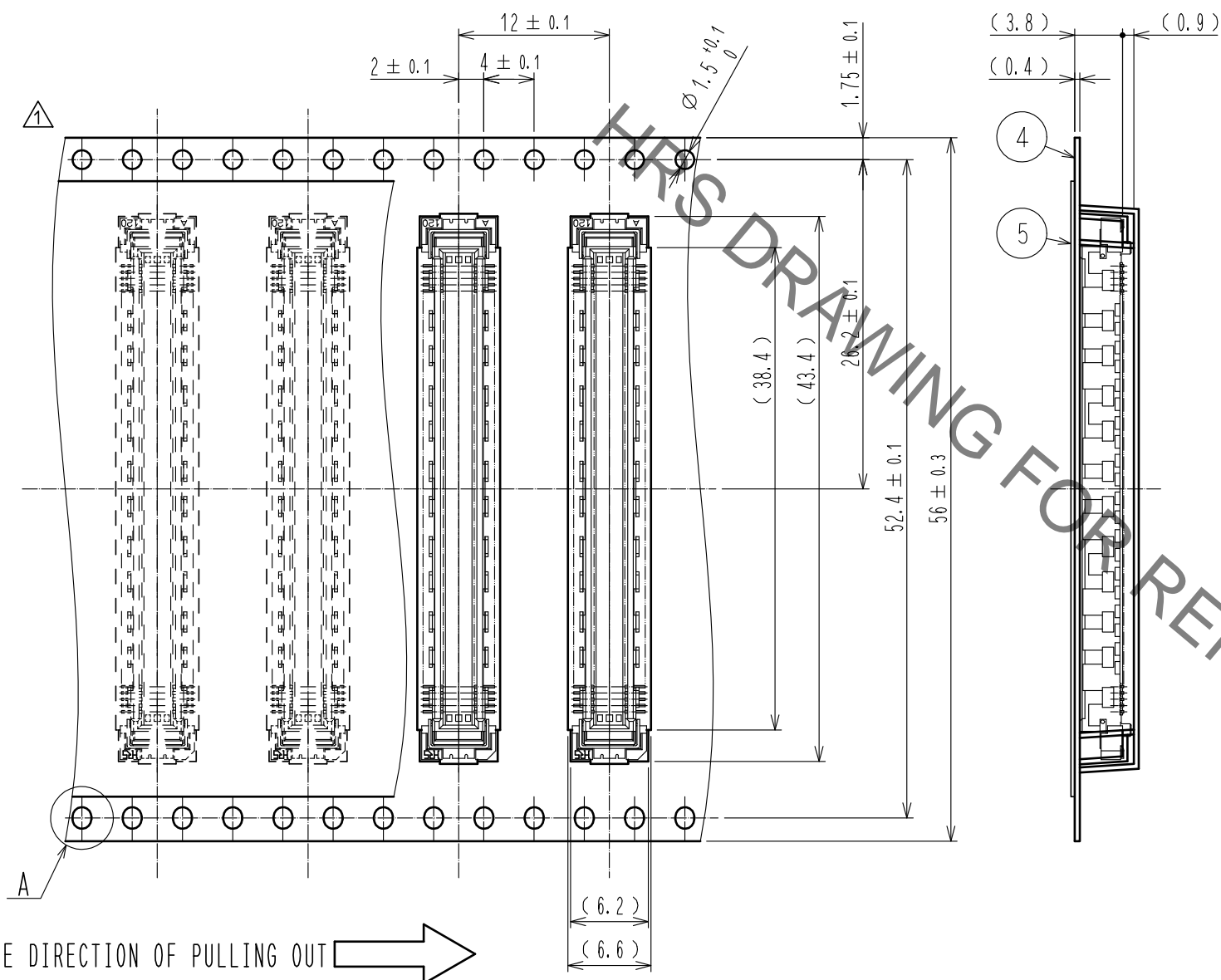


2	PHOSPHOR BRONZE	CONTACT AREA : GOLD 0.76 μm min.	5	PET	TOP COVER TAPE				
		LEAD AREA : GOLD 0.03 μm min.	4	PS	EMBOSSED CARRIER TAPE				
		UNDER PLATING : NICKEL 1.3 μm min.	3	PHOSPHOR BRONZE	SURFACE AREA : GOLD 0.03 μm min. UNDER PLATING : NICKEL 1.3 μm min.				
1	LCP	BEIGE							
NO.	MATERIAL	FINISH . REMARKS	NO.	MATERIAL	FINISH . REMARKS				
UNITS	mm	SCALE	4 : 1	COUNT	1	DESCRIPTION OF REVISIONS	DESIGNED	CHECKED	DATE
				DIS-F-00015196		SY. KUDO	HT. YAMAGUCHI	20220902	
HRS HIROSE ELECTRIC CO., LTD.		APPROVED : HS. OKAWA	20130111	DRAWING NO.		EDC-151954-83-23			
		CHECKED : HT. YAMAGUCHI	20130111	PART NO.		FX10A-144P-SV(83)			
		DESIGNED : YJ. ASAO	20130111	CODE NO.		CL0570-0043-5-83			
		DRAWN : YJ. ASAO	20130111						

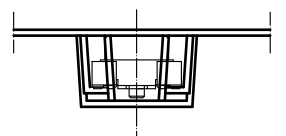
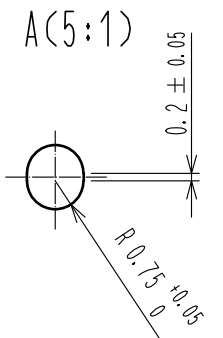
Apr.1.2023 Copyright 2023 HIROSE ELECTRIC CO., LTD. All Rights Reserved.
 In case of consideration for using Automotive equipment / device which demand high reliability, kindly contact our sales window correspondents.

DRAWING FOR PACKING(2:1)

REEL DIMENSION (Free)



THE DIRECTION OF PULLING OUT →



- NOTES
- 8 1 REEL : 1000 CONNECTORS.
 - 9 MINIMUM 10 COMPARTMENTS FROM BOTH REEL ENDS REMAIN EMPTY.
 - 10 THIS PRODUCT HAS NO POLARITY TO TAPE AND REEL PACKAGING.
 - 11 THE DIMENSIONS IN PARENTHESES ARE FOR REFERENCE.

HRS	DRAWING NO.	EDC-151954-83-23
	PART NO.	FX10A-144P-SV(83)
	CODE NO.	CL0570-0043-5-83

2/2