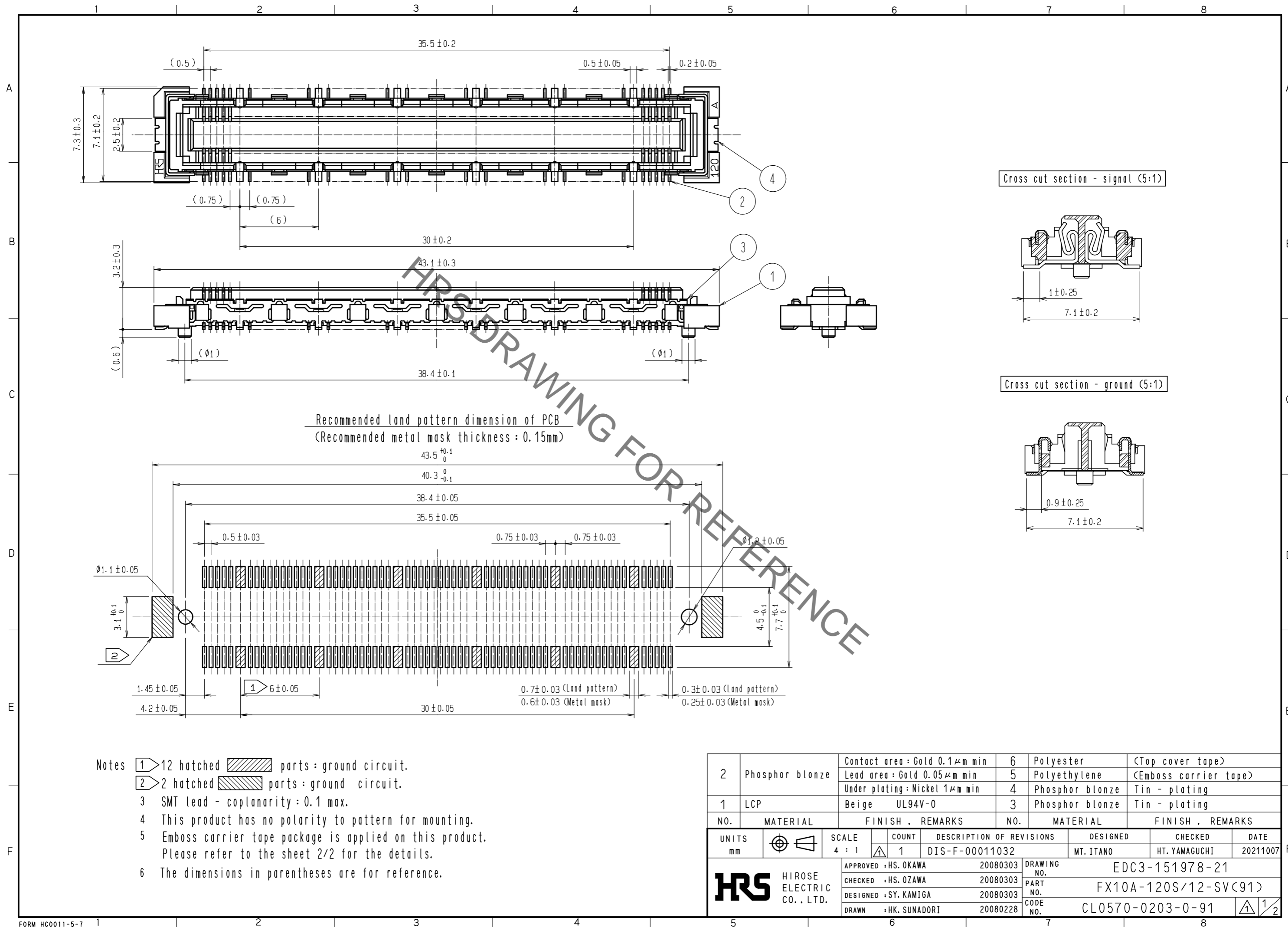


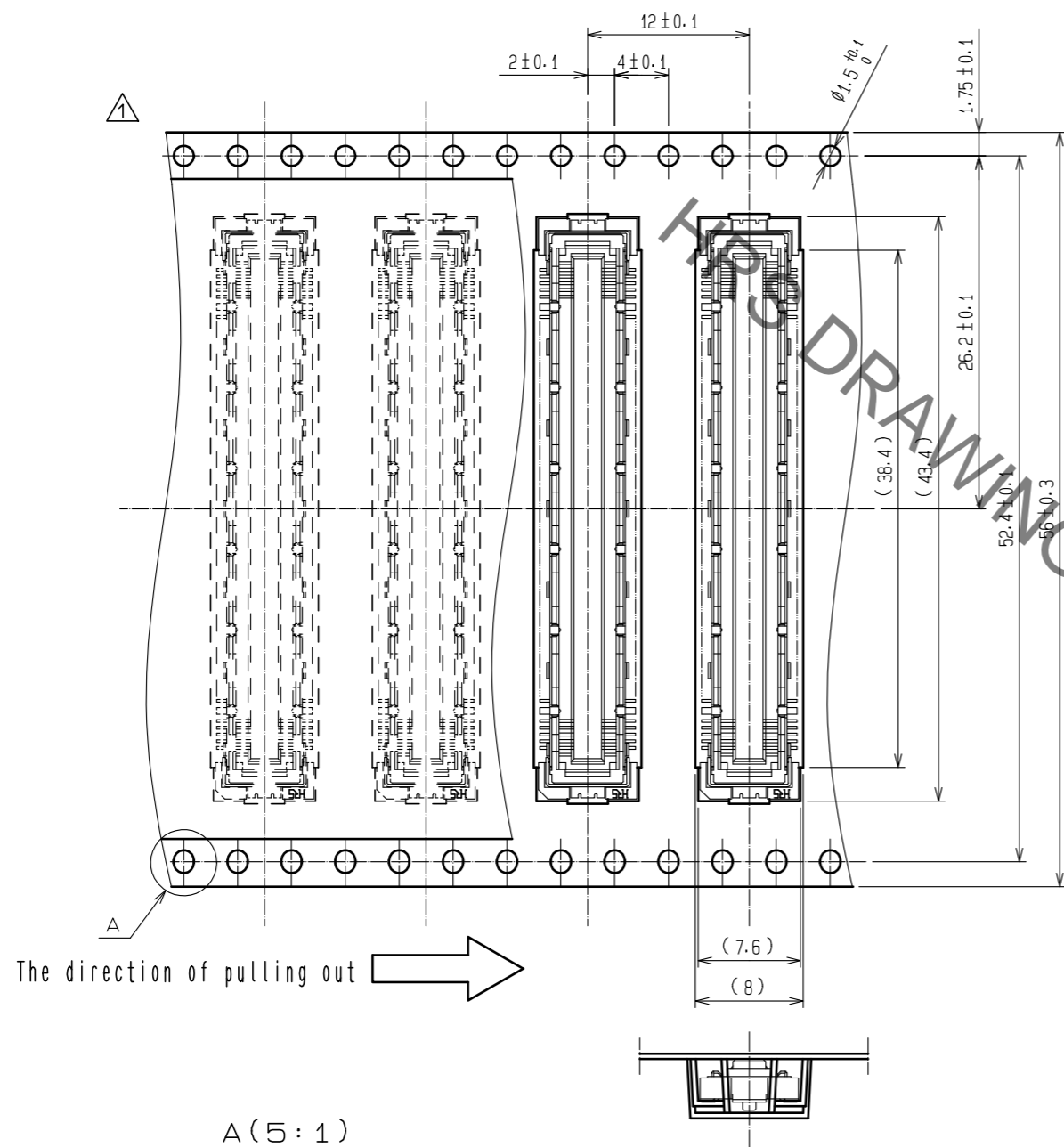
May.1.2023 Copyright 2023 HIROSE ELECTRIC CO., LTD. All Rights Reserved.
In case of consideration for using Automotive equipment / device which demand high reliability, kindly contact our sales window correspondents.



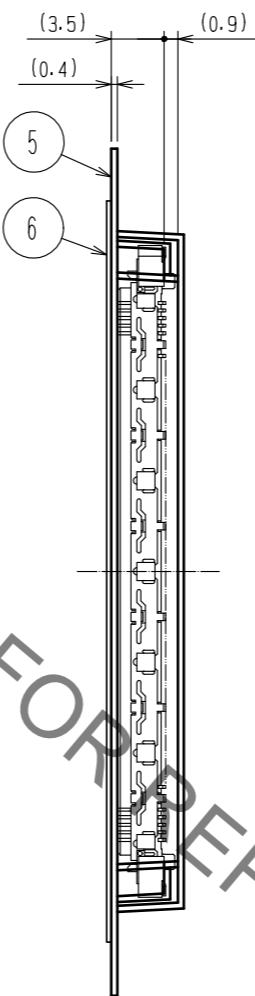
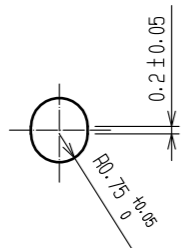
2	Phosphor bronze	Contact area : Gold 0.1μm min	6	Polyester	(Top cover tape)			
		Lead area : Gold 0.05μm min	5	Polyethylene	(Emboss carrier tape)			
		Under plating : Nickel 1μm min	4	Phosphor bronze	Tin - plating			
1	LCP	Beige	UL94V-0	3	Phosphor bronze	Tin - plating		
				NO.	MATERIAL	FINISH . REMARKS		
UNITS		SCALE	COUNT	DESCRIPTION OF REVISIONS		DESIGNED	CHECKED	DATE
mm		4 : 1	1	DIS-F-00011032		MT. ITANO	HT. YAMAGUCHI	20211007
HIROSE ELECTRIC CO., LTD.		APPROVED : HS. OKAWA	20080303	DRAWING NO.		EDC3-151978-21		
		CHECKED : HS. OZAWA	20080303	PART NO.		FX10A-120S/12-SV(C91)		
		DESIGNED : SY. KAMIGA	20080303	CODE NO.		CL0570-0203-0-91		
		DRAWN : HK. SUNADORI	20080228					

May.1.2023 Copyright 2023 HIROSE ELECTRIC CO., LTD. All Rights Reserved.
 In case of consideration for using Automotive equipment / device which demand high reliability, kindly contact our sales window correspondents.

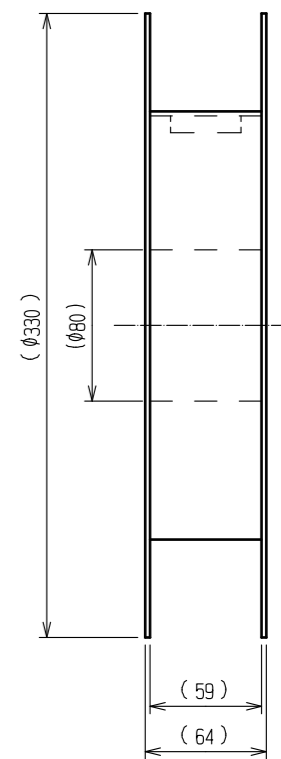
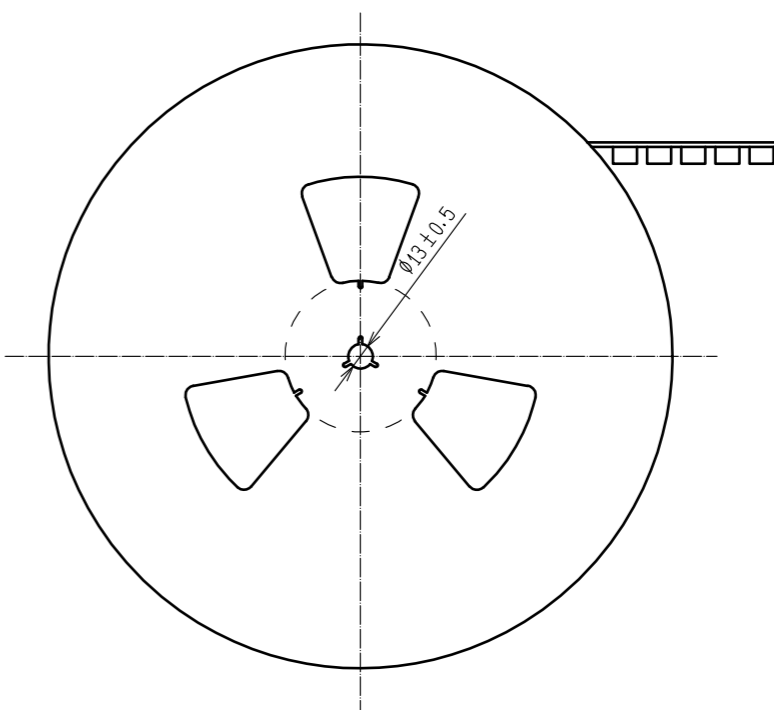
Drawing for packing (2:1)



A (5:1)



Reeled dimension (Free)



DRAWING FOR REFERENCE

- Notes
- 7 1reel : 1,000 connectors.
 - 8 Minimum 10 compartments from both reel ends remain empty.
 - 9 This product has no polavity to tape and reel packaging.
 - 10 The dimensions in parentheses are for reference.

HRS	DRAWING NO.	EDC3-151978-21	
	PART NO.	FX10A-120S/12-SV(91)	
	CODE NO.	CL0570-0203-0-91	