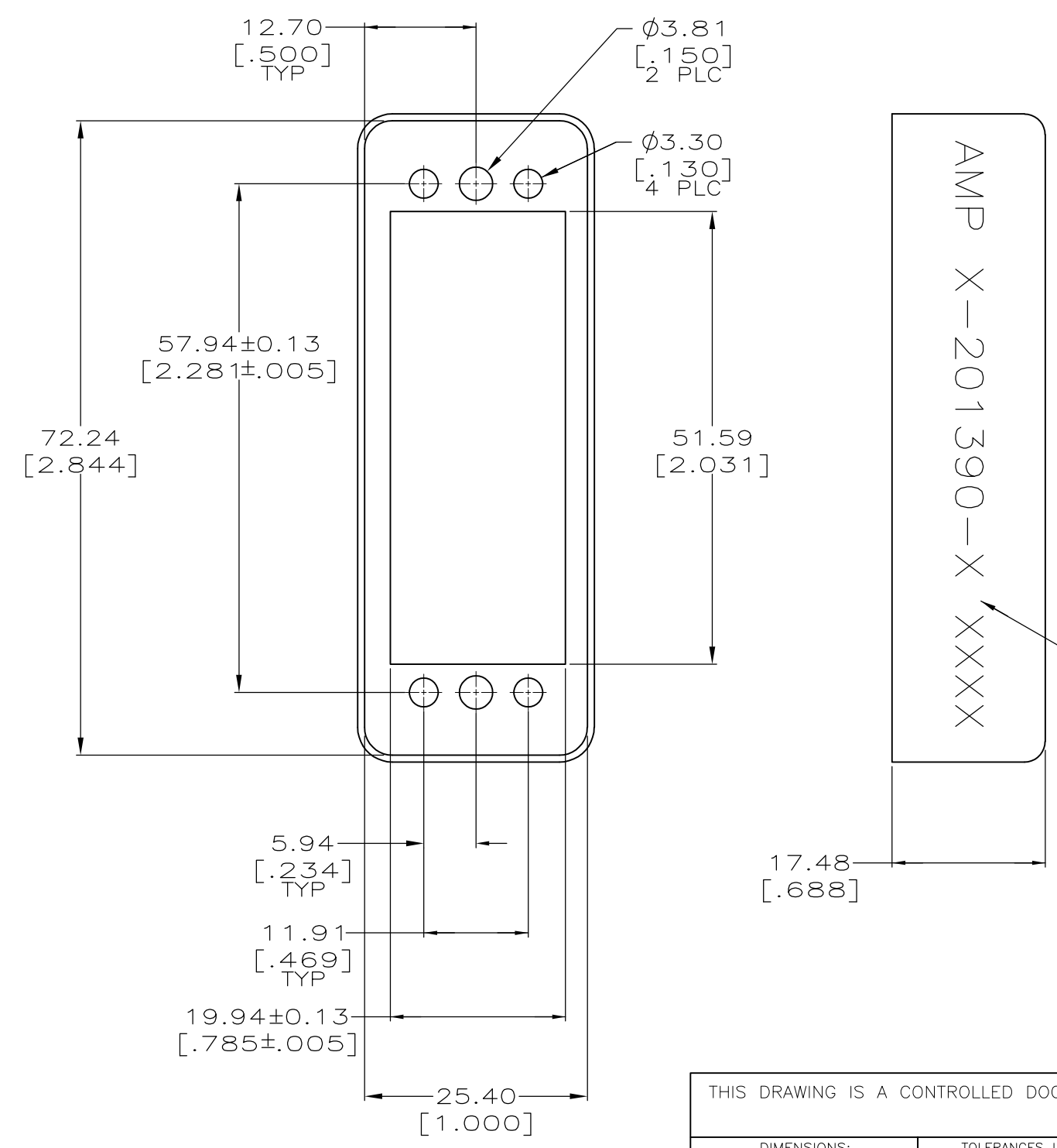


THIS DRAWING IS UNPUBLISHED. RELEASED FOR PUBLICATION  
 © COPYRIGHT - By - ALL RIGHTS RESERVED.

| REVISIONS |     |                           |           |       |
|-----------|-----|---------------------------|-----------|-------|
| P         | LTR | DESCRIPTION               | DATE      | APVD  |
|           | H2  | REVISED PER ECO-16-004000 | 27SEP2016 | NK MZ |



- ① ALUMINUM ALLOY, .031 THICK.
- ② CARBON STEEL.
- ③ IRIDITE, CLEAR.
- ④ ANODIZED, OLIVE DRAB, PER MIL-A-8625.
- ⑤ 5.08µm [.000200] MIN NICKEL.
- ⑥ ANODIZED, BLACK.
- ⑦ OBSOLETE PARTS: OBSOLETE CIS STREAMLINING PER D.RENAUD/D.SINISI

| FINISH     | MATERIAL | PART NUMBER           |
|------------|----------|-----------------------|
| OBSOLETE ⑥ | ①        | <del>2-201390-6</del> |
| OBSOLETE ⑤ | ②        | 201390-5              |
| OBSOLETE ④ | ①        | <del>201390-3</del>   |
| ⑦          | ③        | <del>201390-2</del>   |

|  |                     |                                    |   |        |
|--|---------------------|------------------------------------|---|--------|
| THIS DRAWING IS A CONTROLLED DOCUMENT. |                     | DWN<br>C.REIFSNYDER<br>16 APR 96   | <b>STE</b> TE Connectivity                        |        |
| DIMENSIONS:<br>mm [INCHES]             |                     | CHK<br>R.STONE<br>24 MAY 96        |   |        |
| TOLERANCES UNLESS OTHERWISE SPECIFIED: |                     | APVD<br>G. STEINHAUER<br>21 JUN 96 | NAME<br>PIN HOOD, 50 PLACE,<br>EXTERNAL, M SERIES |        |
| 0 PLC ± -                              |                     | PRODUCT SPEC                       | SIZE  |        |
| 1 PLC ± -                              |                     | APPLICATION SPEC                   | CAGE CODE   |        |
| 2 PLC ± 0.38 [.015]                    |                     | WEIGHT                             | DRAWING NO  |        |
| 3 PLC ± -                              |                     | CUSTOMER DRAWING                   | A3 00779 C-201390                                 |        |
| 4 PLC ± -                              |                     |                                    | SCALE   | SHEET  |
| ANGLES ± -                             |                     | 2:1                                |   | 1 OF 1 |
| MATERIAL<br>SEE TABLE                  | FINISH<br>SEE TABLE | RESTRICTED TO<br>H2                |   |        |