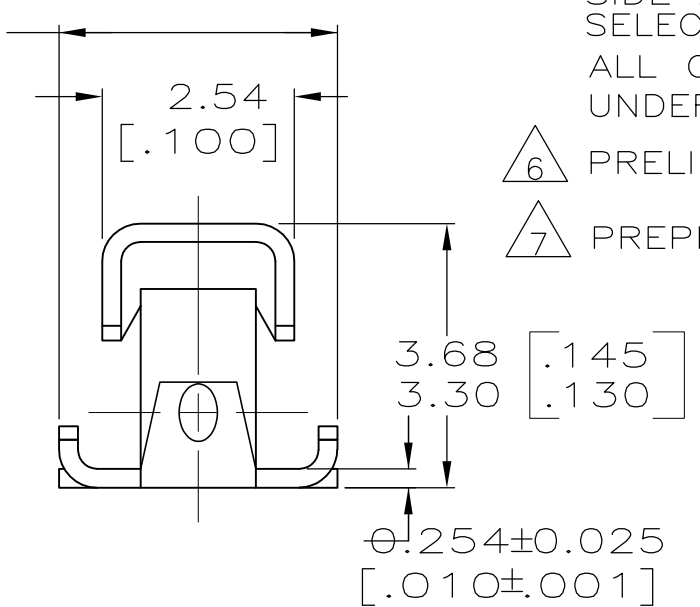
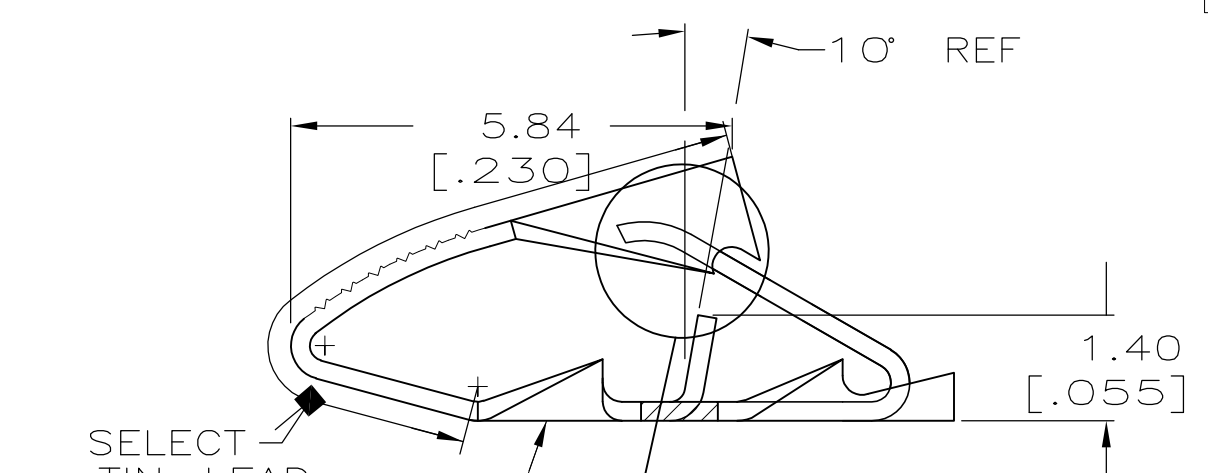
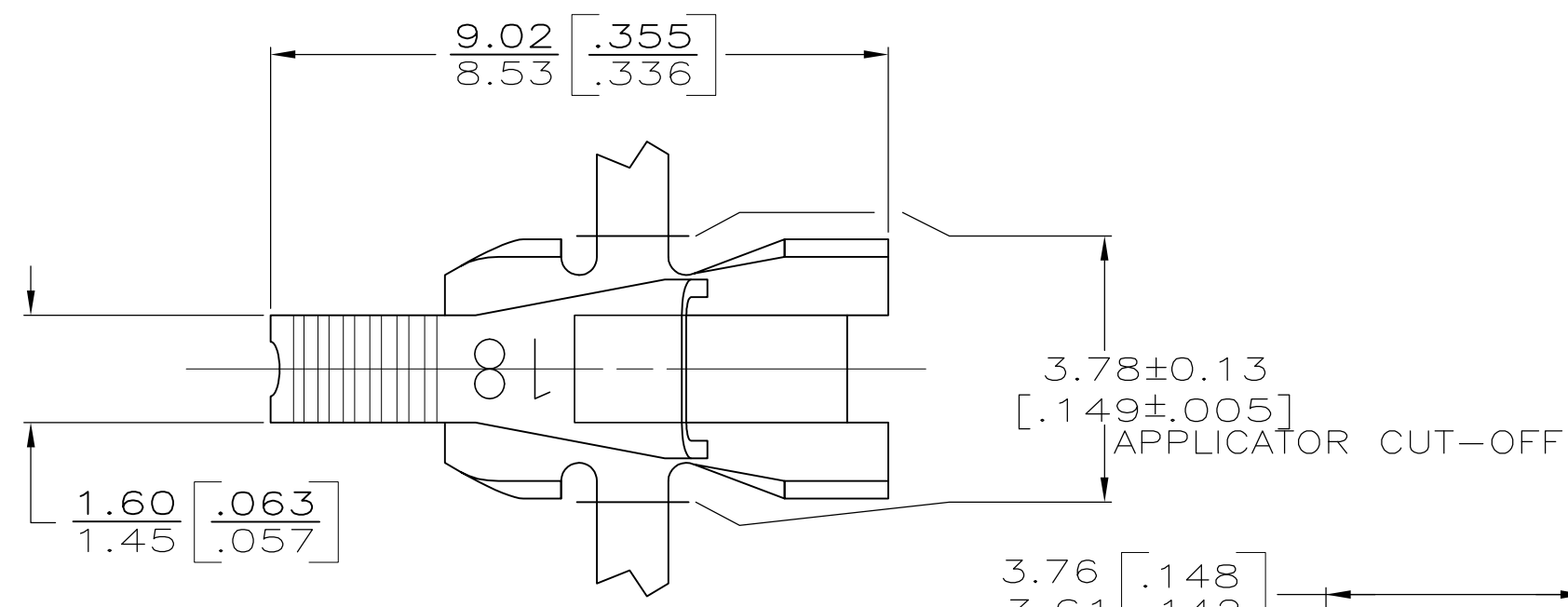


THIS DRAWING IS UNPUBLISHED. RELEASED FOR PUBLICATION  
 © COPYRIGHT BY TYCO ELECTRONICS CORPORATION. ALL RIGHTS RESERVED.

LOC	DIST	REVISIONS					
AF	50	P	LTR	DESCRIPTION	DATE	DWN	APVD
			E3	REVISED PER ECR-14-011704	07AUG14	GRZ	JL



- 1 CONTINUOUS STRIP ON REELS WITH TERMINALS LOCATED ON 6.10±0.08 [.240±.003] CENTERS.
- 2 IDENTIFICATION NUMBER 18 FOR MAGNET WIRE RANGE.
- 3 0.000762[.000030] MIN SELECT GOLD ON ONE SIDE AS SHOWN, 0.00127[.000050] MIN SELECT TIN-LEAD ON BOTH SIDES AS SHOWN ALL OVER 0.00127[.000050] MIN NICKEL UNDERPLATE
- 4 0.002032 [.000080] MIN TIN OVER 0.00127 [.000050] MIN NICKEL WITH ANTI-FRETTING LUBE ON POKE-IN LEAF AREA.
- 5 0.000762[.000030] MIN SELECT GOLD ON ONE SIDE AS SHOWN, 0.00127[.000050] MIN SELECT TIN ON BOTH SIDES AS SHOWN ALL OVER 0.00127[.000050] MIN NICKEL UNDERPLATE
- 6 PRELIMINARY - NOT FOR PRODUCTION.
- 7 PREPRODUCTION - FASR REQUIRED

SELECT TIN-LEAD -1 & -3 ONLY



SELECT GOLD -1 & -3 ONLY



OBSOLETE		<del>5</del>	<del>7</del>	63844-3
OBSOLETE	0.10-0.25mm [#38-#30] AWG	<del>4</del>	<del>6</del>	63844-2
OBSOLETE		<del>3</del>		63844-1
COPPER MAGNET WIRE RANGE		FINISH		PART NO.

THIS DRAWING IS A CONTROLLED DOCUMENT.		DWN R.GRZYBOWSKI 3/MAY/95	Tyco Electronics Corporation Harrisburg, Pa 17105-3608	
DIMENSIONS: MM [ INCHES ]		CHK MICHAEL S. FEHER 3/MAY/95	NAME	
TOLERANCES UNLESS OTHERWISE SPECIFIED:		APVD TL SHUTTER 3/MAY/95	PRODUCT SPEC	
0 PLC ± -	1 PLC ± -	108-2016		
2 PLC ± 0.25 [.010]	3 PLC ± -	APPLICATION SPEC		
4 PLC ± -	ANGLES ± -	114-2047		
MATERIAL H02 BRASS	FINISH SEE TABLE	WEIGHT -	SIZE A3	CAGE CODE 00779
CUSTOMER DRAWING		DRAWING NO C-63844		RESTRICTED TO -
SCALE 10:1		SHEET 1 OF 1		REV E3