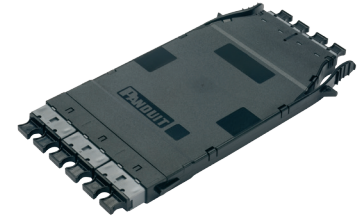


technical information

HD Flex™ Dark Fiber Conversion Cassettes are used to convert fiber cabling systems based upon multiples of 12 fibers to an 8 fiber system used by applications requiring parallel optics (e.g. 40GBASE-SR4, 100GBASE-SR4, etc). The cassettes utilize 12 fiber MTP* connectivity in the rear of the cassette for mating to 12 fiber trunks and provide a breakout to 8 fiber MTP* ports in the front. The wiring in the 2 x 3 conversion cassette combines the 4 unused fibers from the two 12 fiber trunks (on the back of the cassette) into a third 8 fiber port (on the front of the cassette). HD Flex™ Dark Fiber Conversion Cassettes are also offered in 4 x 6 cassettes in which four 12 fiber trunks are converted into six 8 fiber ports. Cassettes are configured for polarity as a TIA-568 Type-A or Type-B.



application

Application areas include key elements as specified in Data Center Cabling Standard TIA-942 cross connects in main, horizontal, and equipment distribution areas.

construction

Fiber count:	24 and 48
Fiber types:	Multimode: OM4 50/125µm
Front connectivity:	8-fiber MTP* adapter(s) with male ferrules (pins) and PC Polish
Rear MTP* connectivity:	12-fiber MTP* adapter(s) with male ferrules (pins) and PC Polish

environmental properties

Operating temperature:	Room Temperature 23°C (73°F)
Storage and shipping temperature:	-40°C to +75°C (-40°F to 167°F)

performance properties

Insertion loss (Component loss):	Ultra Low Loss (per channel): 0.35 dB max.
Return loss:	Per Channel: > 30dB (MM)
Connector durability:	MTP* connector meets TIA/EIA 568.C.3; A.4.9 Durability: 500 mating cycles

standards

Connectivity meets or exceeds TIA/EIA-568-C.3 performance requirements. Supports IEEE 802.3 (40/100 Gigabit Ethernet) and ANSI T11.2 (Fibre Channel) channel and link specifications. Compliant with ROHS 2002/95/EC.

*MTP is a registered trademark of US Conec Ltd.

HD Flex™ Dark Fiber Conversion Cassettes

part number configurator

Example: FH4ZU-24-NMNMA = Fiber, HD Flex™ Cassette, dark fiber, OM4, Ultra Low Loss, 24 fiber with Method A polarity

Character	1	2	3	4	5	6	7	8	9	10	11	12	13	14	15
Example	F	H	4	Z	U	-	2	4	-	N	M	N	M	A	

1 – Fiber Product

F = Fiber

2 – Product

H = HD Flex™ Cassette

3 – Generation

4 = Conversion Cassette

4 – Fiber Type

Z = OM4 50/125µm

5 – Fiber Performance

U = Ultra Low Loss

6 – Dash

7 and 8 – Numbers of Fibers

24 = 24-fiber total

48 = 48-fiber total

9 – Dash

10 and 12 – Options

N = None

11 and 13 – Polarity

M = MTP* connector

14 and 15 – Polarity

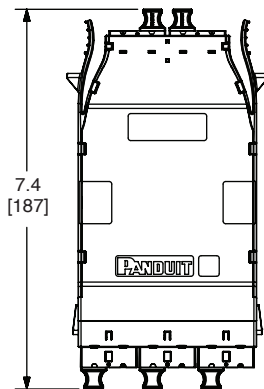
A = Method A

B = Method B

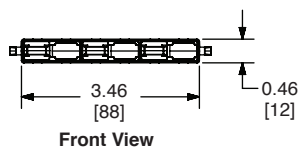
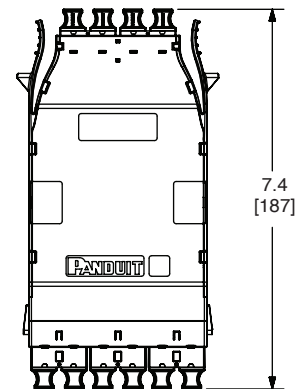
*MTP is a registered trademark of US Conec Ltd.

HD™ Flex Dark Fiber Conversion Cassettes

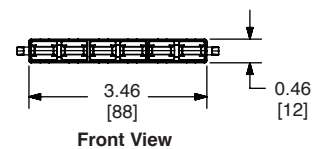
24 Fiber



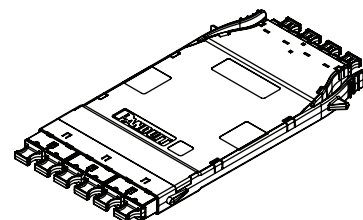
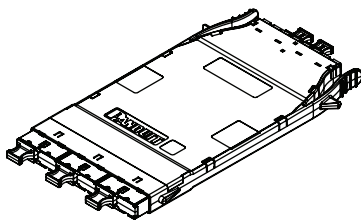
48 Fiber



Front View



Front View



Dimensions are in inches. [Dimensions in brackets are metric].

WORLDWIDE SUBSIDIARIES AND SALES OFFICES

PANDUIT CANADA
Markham, Ontario
cs-cdn@panduit.com
Phone: 800.777.3300

PANDUIT EUROPE LTD.
London, UK
cs-emea@panduit.com
Phone: 44.20.8601.7200

PANDUIT SINGAPORE PTE. LTD.
Republic of Singapore
cs-ap@panduit.com
Phone: 65.6305.7575

PANDUIT JAPAN
Tokyo, Japan
cs-japan@panduit.com
Phone: 81.3.6863.6000

PANDUIT LATIN AMERICA
Guadalajara, Mexico
cs-la@panduit.com
Phone: 52.33.3777.6000

PANDUIT AUSTRALIA PTY. LTD.
Victoria, Australia
cs-aus@panduit.com
Phone: 61.3.9794.9020

For a copy of Panduit product warranties, log on to www.panduit.com/warranty

For more information

Visit us at www.panduit.com

Contact Customer Service by email: cs@panduit.com
or by phone: 800.777.3300

PANDUIT™

© 2016 Panduit Corp.
ALL RIGHTS RESERVED.
FBSP103--WW-ENG
12/2016