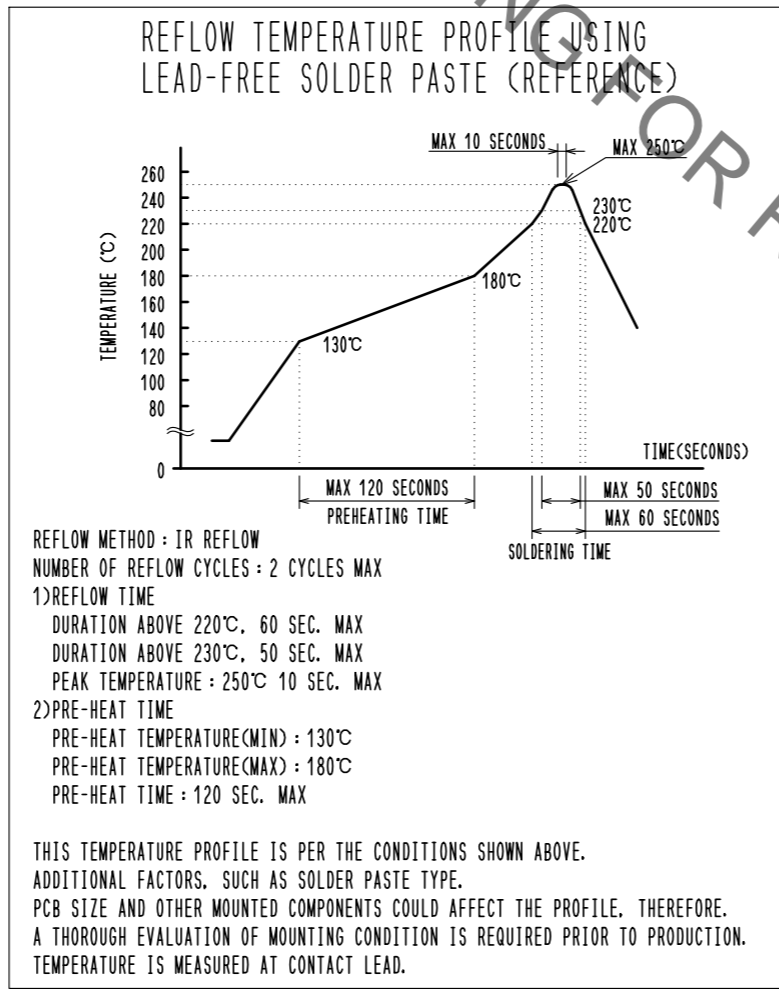
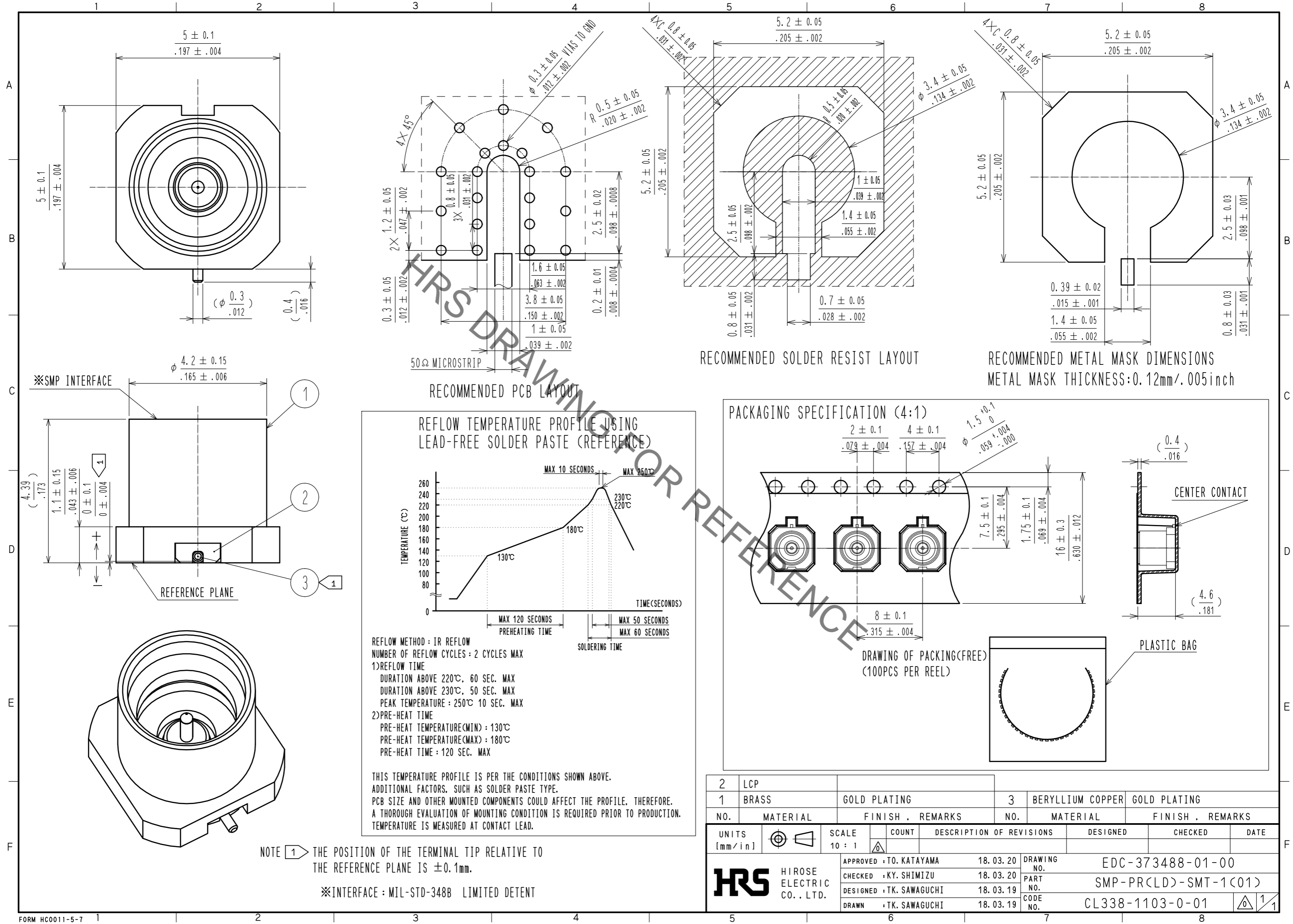


May.1.2023 Copyright 2023 HIROSE ELECTRIC CO., LTD. All Rights Reserved.
 In case of consideration for using Automotive equipment / device which demand high reliability, kindly contact our sales window correspondents.



2	LCP			3	BERYLLIUM COPPER	GOLD PLATING			
1	BRASS	GOLD PLATING							
NO.	MATERIAL	FINISH	REMARKS	NO.	MATERIAL	FINISH	REMARKS		
UNITS [mm/in]		SCALE 10 : 1	COUNT	DESCRIPTION OF REVISIONS			DESIGNED	CHECKED	DATE
HRS HIROSE ELECTRIC CO., LTD.				APPROVED : TO. KATAYAMA	18.03.20	DRAWING NO. EDC-373488-01-00			
				CHECKED : KY. SHIMIZU	18.03.20	PART NO. SMP-PR(LD)-SMT-1(C01)			
				DESIGNED : TK. SAWAGUCHI	18.03.19	CODE NO. CL338-1103-0-01			
				DRAWN : TK. SAWAGUCHI	18.03.19	1/1			