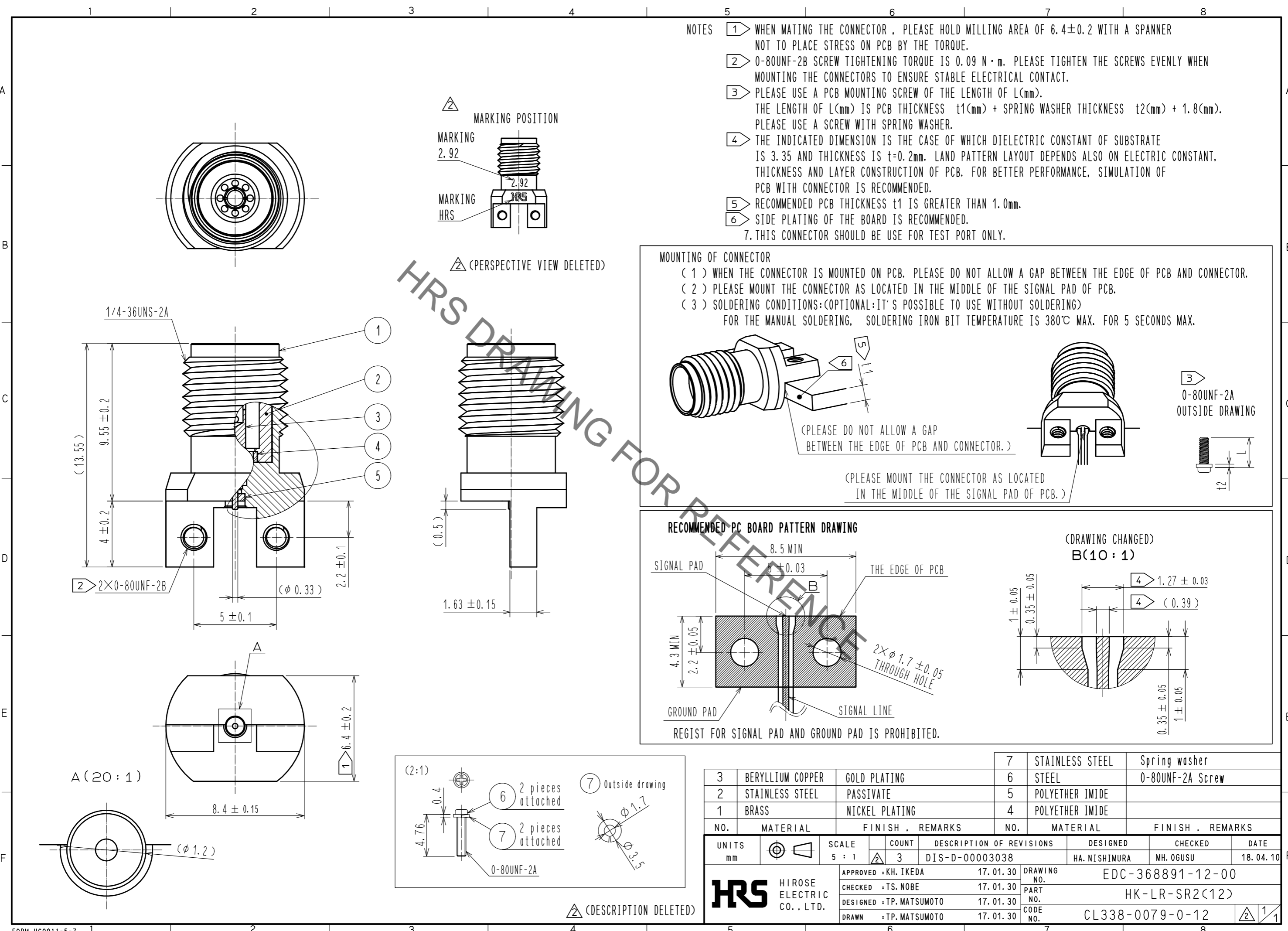
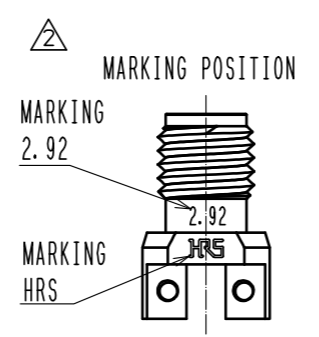


May.1.2023 Copyright 2023 HIROSE ELECTRIC CO., LTD. All Rights Reserved.  
In case of consideration for using Automotive equipment / device which demand high reliability, kindly contact our sales window correspondents.



- NOTES
- 1 WHEN MATING THE CONNECTOR, PLEASE HOLD MILLING AREA OF  $6.4 \pm 0.2$  WITH A SPANNER NOT TO PLACE STRESS ON PCB BY THE TORQUE.
  - 2 0-80UNF-2B SCREW TIGHTENING TORQUE IS  $0.09 \text{ N} \cdot \text{m}$ . PLEASE TIGHTEN THE SCREWS EVENLY WHEN MOUNTING THE CONNECTORS TO ENSURE STABLE ELECTRICAL CONTACT.
  - 3 PLEASE USE A PCB MOUNTING SCREW OF THE LENGTH OF L(mm). THE LENGTH OF L(mm) IS PCB THICKNESS  $t_1(\text{mm})$  + SPRING WASHER THICKNESS  $t_2(\text{mm})$  +  $1.8(\text{mm})$ . PLEASE USE A SCREW WITH SPRING WASHER.
  - 4 THE INDICATED DIMENSION IS THE CASE OF WHICH DIELECTRIC CONSTANT OF SUBSTRATE IS 3.35 AND THICKNESS IS  $t=0.2\text{mm}$ . LAND PATTERN LAYOUT DEPENDS ALSO ON ELECTRIC CONSTANT, THICKNESS AND LAYER CONSTRUCTION OF PCB. FOR BETTER PERFORMANCE, SIMULATION OF PCB WITH CONNECTOR IS RECOMMENDED.
  - 5 RECOMMENDED PCB THICKNESS  $t_1$  IS GREATER THAN 1.0mm.
  - 6 SIDE PLATING OF THE BOARD IS RECOMMENDED.
  - 7 THIS CONNECTOR SHOULD BE USE FOR TEST PORT ONLY.



**MOUNTING OF CONNECTOR**

(1) WHEN THE CONNECTOR IS MOUNTED ON PCB, PLEASE DO NOT ALLOW A GAP BETWEEN THE EDGE OF PCB AND CONNECTOR.  
 (2) PLEASE MOUNT THE CONNECTOR AS LOCATED IN THE MIDDLE OF THE SIGNAL PAD OF PCB.  
 (3) SOLDERING CONDITIONS:(OPTIONAL:IT'S POSSIBLE TO USE WITHOUT SOLDERING)  
 FOR THE MANUAL SOLDERING, SOLDERING IRON BIT TEMPERATURE IS  $380^\circ\text{C}$  MAX. FOR 5 SECONDS MAX.

(PLEASE DO NOT ALLOW A GAP BETWEEN THE EDGE OF PCB AND CONNECTOR.)

(PLEASE MOUNT THE CONNECTOR AS LOCATED IN THE MIDDLE OF THE SIGNAL PAD OF PCB.)

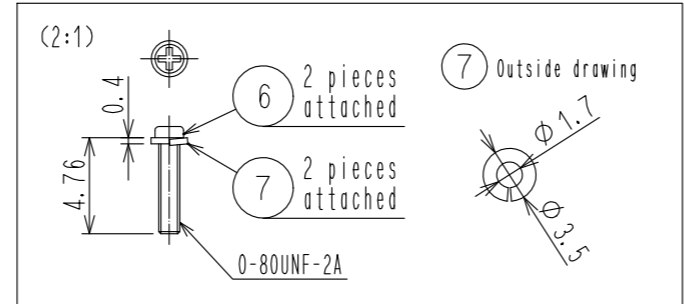
0-80UNF-2A OUTSIDE DRAWING

**RECOMMENDED PC BOARD PATTERN DRAWING**

8.5 MIN  
 $5 \pm 0.03$   
 THE EDGE OF PCB  
 B  
 4.3 MIN  
 $2.2 \pm 0.05$   
 $2 \times \phi 1.7 \pm 0.05$  THROUGH HOLE  
 GROUND PAD  
 SIGNAL LINE  
 REGIST FOR SIGNAL PAD AND GROUND PAD IS PROHIBITED.

(DRAWING CHANGED)  
**B(10:1)**

$1.27 \pm 0.03$   
 $(0.39)$   
 $1 \pm 0.05$   
 $0.35 \pm 0.05$   
 $0.35 \pm 0.05$   
 $1 \pm 0.05$



3	BERYLLIUM COPPER	GOLD PLATING	7	STAINLESS STEEL	Spring washer		
2	STAINLESS STEEL	PASSIVATE	6	STEEL	0-80UNF-2A Screw		
1	BRASS	NICKEL PLATING	5	POLYETHER IMIDE			
			4	POLYETHER IMIDE			
NO.	MATERIAL	FINISH . REMARKS	NO.	MATERIAL	FINISH . REMARKS		
UNITS		SCALE	COUNT	DESCRIPTION OF REVISIONS	DESIGNED	CHECKED	DATE
mm		5 : 1	3	DIS-D-00003038	HA. NISHIMURA	MH. OGUSU	18. 04. 10
APPROVED : KH. IKEDA 17. 01. 30			DRAWING NO. EDC-368891-12-00				
CHECKED : TS. NOBE 17. 01. 30			PART NO. HK-LR-SR2(12)				
DESIGNED : TP. MATSUMOTO 17. 01. 30			CODE NO. CL338-0079-0-12				
DRAWN : TP. MATSUMOTO 17. 01. 30							