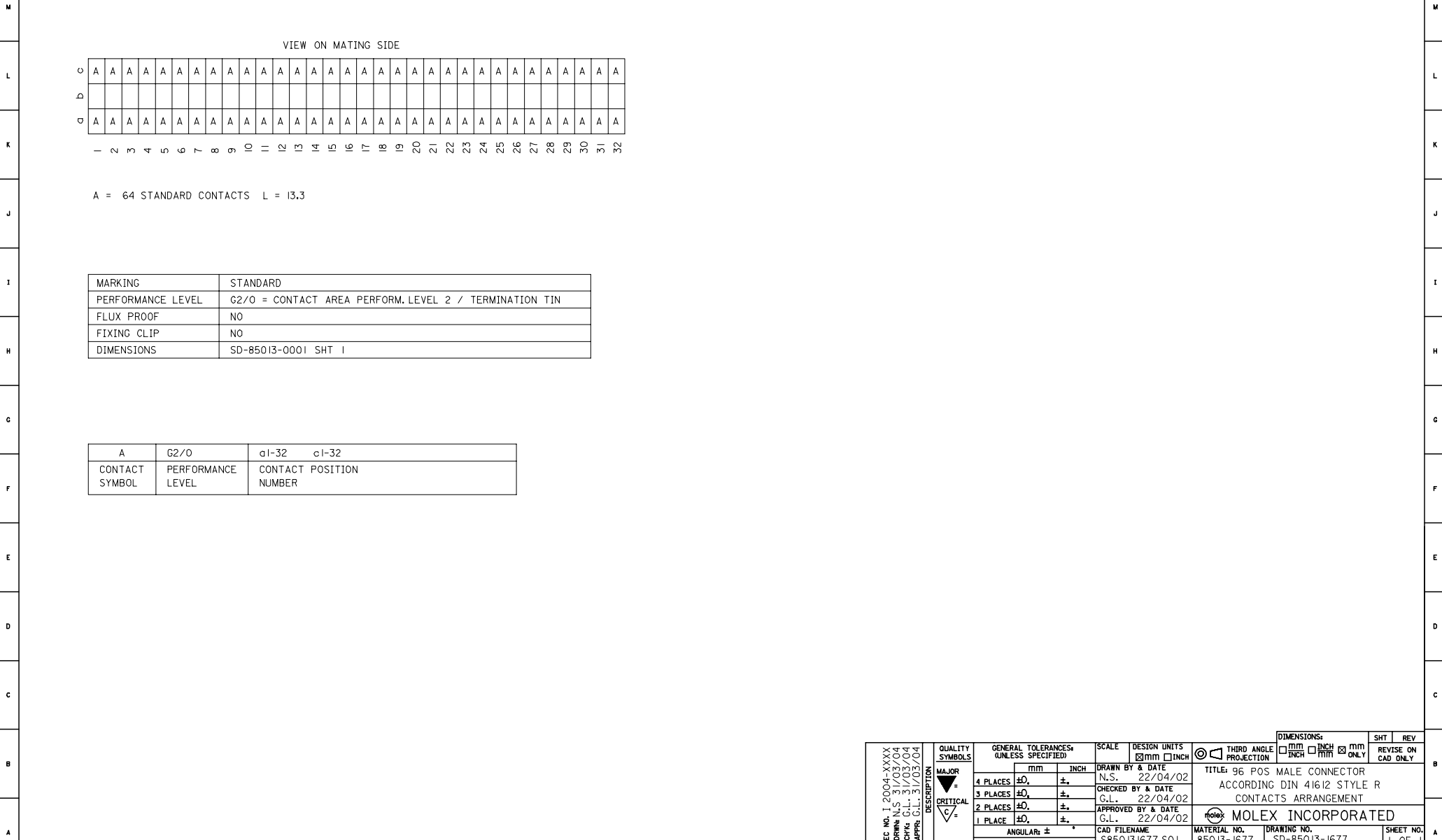


20 19 18 17 16 15 14 13 12 11 9 8 7 6 5 4 3 2 1

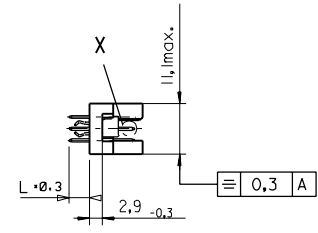
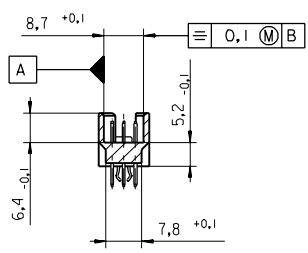
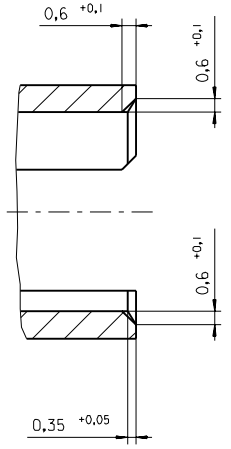


EC NO. I 2004-XXXX DRAWN N.S. 31/03/04 CHK. G.L. 31/03/04 APPR. G.L. 31/03/04	QUALITY SYMBOLS MAJOR CRITICAL	GENERAL TOLERANCES: (UNLESS SPECIFIED)		SCALE	DESIGN UNITS <input checked="" type="checkbox"/> MM <input type="checkbox"/> INCH	THIRD ANGLE PROJECTION	DIMENSIONS: <input type="checkbox"/> INCH <input type="checkbox"/> MM <input checked="" type="checkbox"/> INCH ONLY	SHT	REV		
		4 PLACES	±0.	±.	DRAWN BY & DATE N.S. 22/04/02	TITLE: 96 POS MALE CONNECTOR ACCORDING DIN 41612 STYLE R CONTACTS ARRANGEMENT MOLEX INCORPORATED				REVISE ON CAD ONLY	
		3 PLACES	±0.	±.	CHECKED BY & DATE G.L. 22/04/02						
		2 PLACES	±0.	±.	APPROVED BY & DATE G.L. 22/04/02						
1 PLACE	±0.	±.	ANGULAR: ±								
CAD FILENAME	MATERIAL NO.		DRAWING NO.		SHEET NO.						
S850131677.S01	85013-1677		SD-85013-1677		1 OF 1						
DRAFT WHERE APPLICABLE MUST REMAIN WITHIN DIMENSIONS			THIS DRAWING CONTAINS INFORMATION THAT IS PROPRIETARY TO MOLEX INCORPORATED AND SHOULD NOT BE USED WITHOUT WRITTEN PERMISSION.							SIZE	D

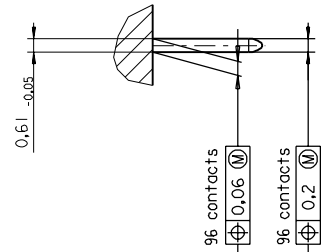
24-border.DGN REV A 96/06/12 LEVEL 6 19 18 17 16 15 14 13 12 11 10 9 8 7 6 5 4 3 2 1

PART NO.
DWG. NO.

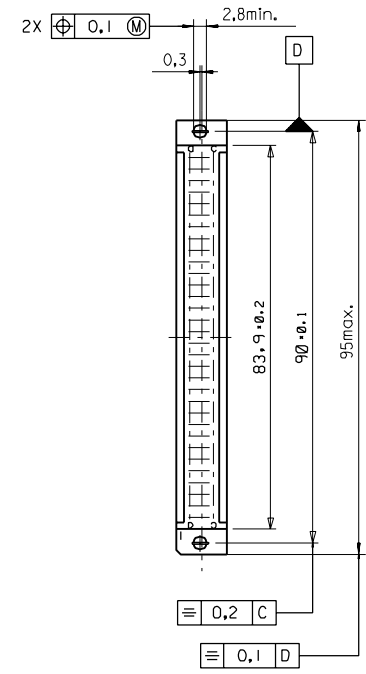
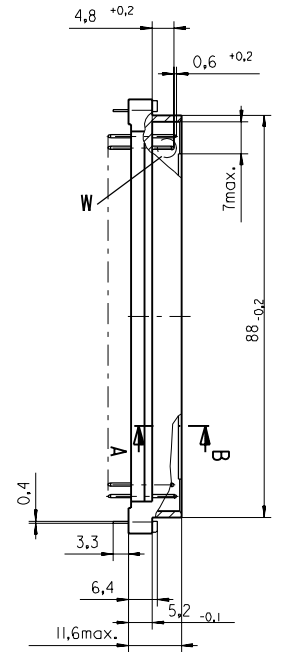
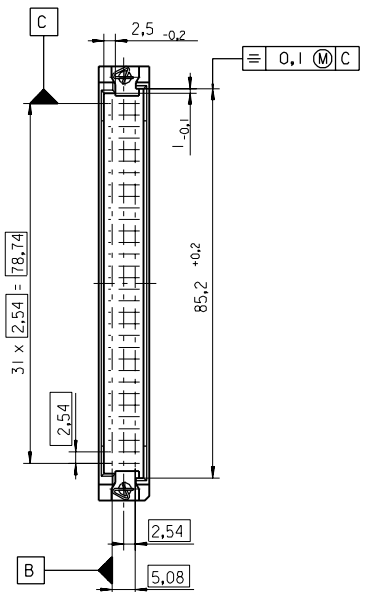
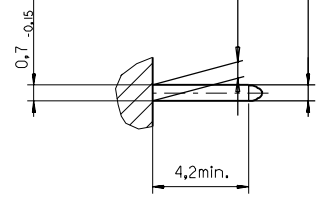
Section A - B
5:1



View X
5:1



View W
5:1



FIRST ANGLE PROJECTION		REVISE ONLY ON CAD SYSTEM		SH.	REV.	
first release see ECN No. 1887 A LTR REVISIONS FOR PREVIOUS REVISIONS SEE MRI LIST	UNLESS OTHERWISE SPECIFIED TOLERANCES: ANGULAR ±2° INCH METRIC 3 PLACE ± . ± 2 PLACE ± . ± 1 PLACE ± . ± DRAFT WHERE APPLICABLE MUST REMAIN WITHIN DIMENSIONS	DRWG BY Ca CHK'D BY KN APP'D BY	CAD/CAM PROJECT NAME 85013000 611 THIS DRAWING CONTAINS INFORMATION THAT IS PROPRIETARY TO MOLEX INC. & SHOULD NOT BE USED WITHOUT WRITTEN PERMISSION	TITLE 96 pos. Male connector acc. DIN 41612 Style R Dimensions		
	DESIGN DIMENSION <input checked="" type="checkbox"/> MM <input type="checkbox"/> IN. EQUIVALENT DIMENSION <input type="checkbox"/> MM <input type="checkbox"/> IN. IF TWO DIMENSIONS ARE SHOWN THE UPPER IS THE DESIGN DIMENSION, LOWER IS SECONDARY	SCALE 1:1	MOLEX MOLEX EUROPE PART NO. SDA-85013-0001 DWG NO.	SHEET NO. DATE 1 OF 95/06/07	SIZE B	

View on mating side

0	A	A	A	A	A	A	A	A	A	A	A	A	A	A	A	A	A	A	A	A	A	A	A
Δ																							
□	A	A	A	A	A	A	A	A	A	A	A	A	A	A	A	A	A	A	A	A	A	A	A

1 2 3 4 5 6 7 8 9 10 11 12 13 14 15 16 17 18 19 20 21 22 23 24 25 26 27 28 29 30

A = 64 standard contacts L=13,3

Marking	Standard
Performance level	G2/0 = Contact area perform. level2 / Termination tin
Flux proof	no
Fixing clip	no
Dimensions	SDA-85013-0001 sht.1
Technical Data	PS-85013-0001

A G2/0 a1-32 c1-32

Contact Perform. level

Contact position number

first release
see ECN No. 1868

REVISIONS

FOR PREVIOUS REVISIONS SEE MRI LIST

UNLESS OTHERWISE SPECIFIED TOLERANCES: ANGULAR ±.2°	DRWG BY	SIGN
3 PLACE ± . INCH METRIC ±	Cd	
2 PLACE ± . ±	CHK'D BY	SIGN
1 PLACE ± . ±	KN	
DRAFT WHERE APPLICABLE MUST REMAIN WITHIN DIMENSIONS	APP'D BY	SIGN
DESIGN DIMENSION <input type="checkbox"/> MM <input type="checkbox"/> IN.		
EQUIVALENT DIMENSION <input type="checkbox"/> MM <input type="checkbox"/> IN.	SCALE	

△

LTR

REVISIONS
THIS DRAWING CONTAINS INFORMATION THAT IS PROPRIETARY TO MOLEX INC. & SHOULD NOT BE USED WITHOUT WRITTEN PERMISSION

CAD/CAM PROJECT NAME	SH.	REV.
TITLE	SHEET NO.	DATE
96 pos. Male connector acc. DIN 41612 style R contacts arrangement	1 OF 1	95/06/06

MOLEX EUROPE

85013-1677
SDA-85013-1677

SIZE A