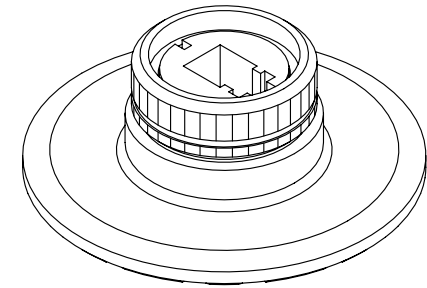
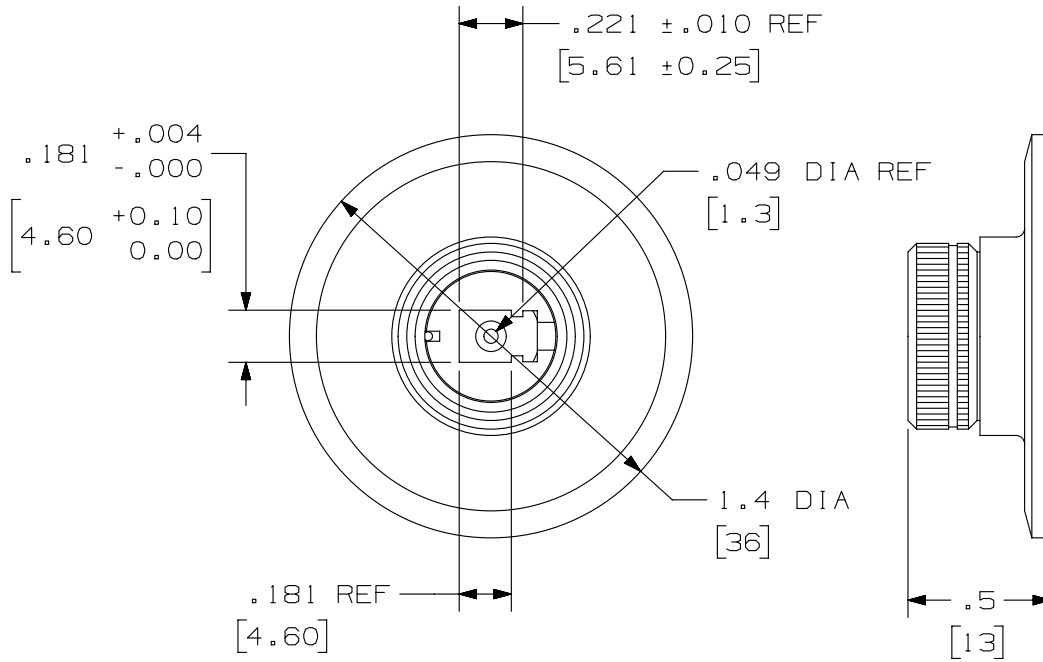


THIS COPY IS PROVIDED ON A RESTRICTED BASIS AND IS NOT TO BE USED IN ANY WAY DETRIMENTAL TO THE INTERESTS OF PANDUIT CORP.

PANDUIT PART NUMBER	WEIGHT
FLCPK	.05 LB./EACH [ 22.2 GRAMS/EACH ]

NOTES:

1. SEE CURRENT CATALOG FOR ADDITIONAL PART NUMBER SUFFIXES TO INDICATE PACKAGE QUANTITIES.
2. THE POLISHING PUCK IS CONSTRUCTED FROM A NON-RUSTING, NON-PITTING MATERIAL AND IS DESIGNED TO BE USED FOR THE POLISHING OF LC TYPE CONNECTORS.
3. THE POLISHING PUCK INCORPORATES A SPRING-LOADED "POSITIVE" LATCHING MECHANISM THAT RETAINS THE CONNECTOR AND DOES NOT ALLOW IT TO ROTATE DURING THE POLISHING PROCESS WHILE SUPPLYING A CONSTANT PRESSURE ONTO THE ENDFACE OF THE FERRULE.
4. ALL DIMENSIONS IN BRACKETS ARE METRIC [ mm ].



PART NUMBER		FLCPK	
TITLE			
LC POLISHING PUCK		CUSTOMER DRAWING	
ITEM REVISION NAME		M01190CA/02	
DATASET FILE NAME		M01190CA_DC/00C	
UNLESS OTHERWISE SPECIFIED, DIMENSIONAL TOLERANCES ARE: IN [ mm ]		MATERIAL:	
.x ± .xx ± .03 [ .8 ]		.xxx ± .010 [ .3 ]	
ANGLES ±		DRAWING NUMBER:	
THIRD ANGLE PROJECTION		01190-25	
DRAWN BY	DATE	CHK	SCALE
EFK	07-24-03	RTF I	NONE
REV	DATE	BY	CHK
2	2/11/15	JSP	WJM
APR	DESCRIPTION		ECN
	A. REVISED DRAWING TITLE BLOCK.		01190-25
SHT 1 OF 1		SIZE	
A		A	

D10100DA/14