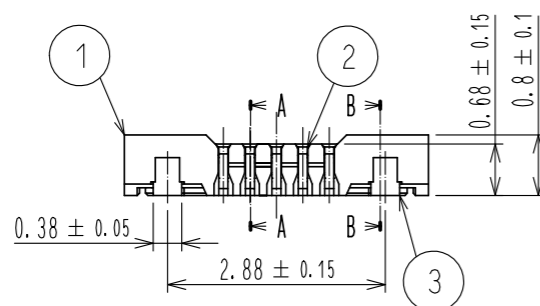
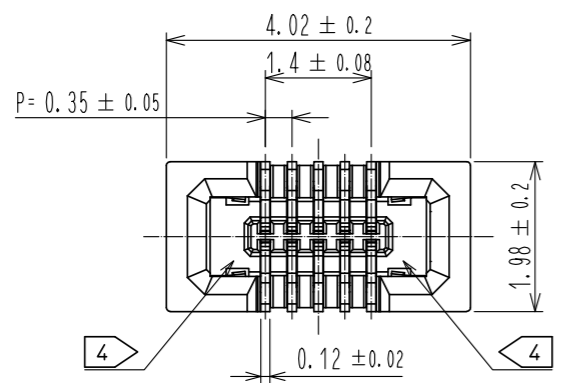
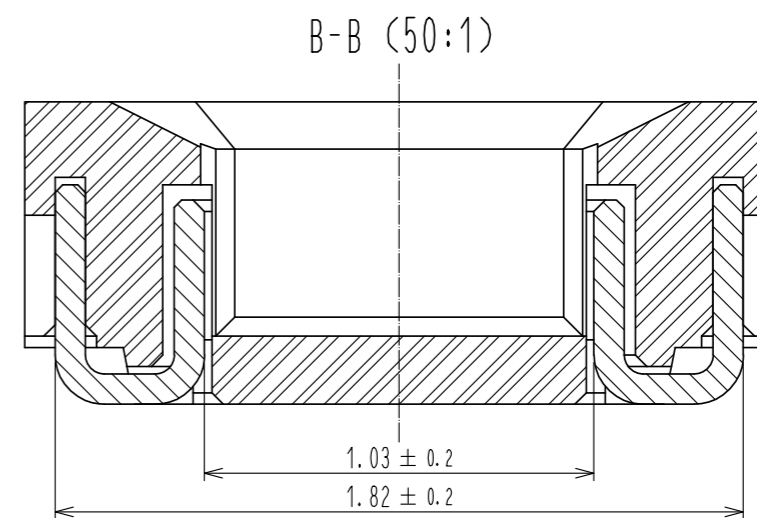
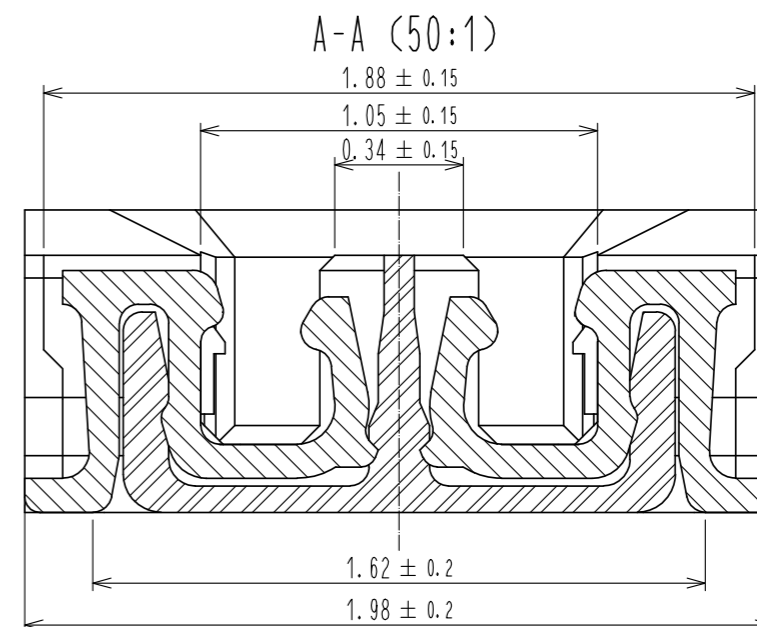


May.1.2023 Copyright 2023 HIROSE ELECTRIC CO., LTD. All Rights Reserved.
In case of consideration for using Automotive equipment / device which demand high reliability, kindly contact our sales window correspondents.

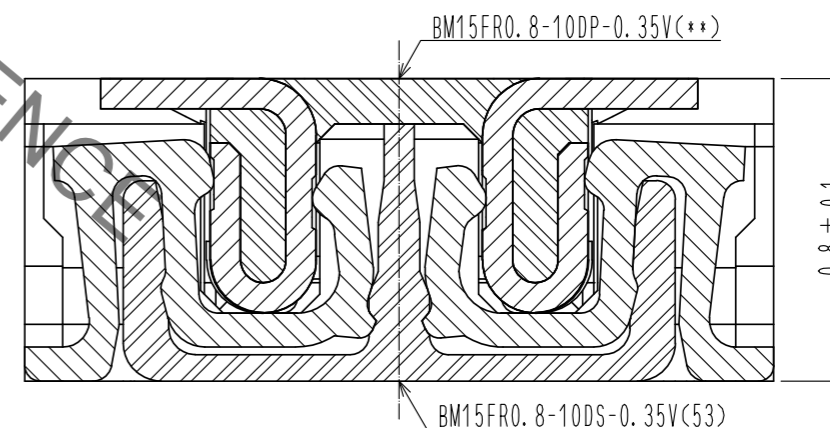


NOTE) 1 . ALL LEAD CO-PLANARITY SHALL BE 0.08mm MAX
 2 CONTACT PLATING SPECIFICATIONS.
 CONTACT AREA : GOLD 0.05 μm MIN
 SMT LEAD : GOLD 0.05 μm MIN
 UNDERPLATING : NICKEL 1 μm MIN
 (SURFACE : SEALING)
 3 REINFORCED METAL FITTINGS LOCK
 SMT LEAD : GOLD 0.05 μm MIN
 UNDERPLATING : NICKEL 1 μm MIN
 (SURFACE : SEALING)
 4 CAV NO. AND HRS MARK MAY BE INDICATED IN APPROX POSITION SHOWN.

HRS DRAWING FOR REFERENCE



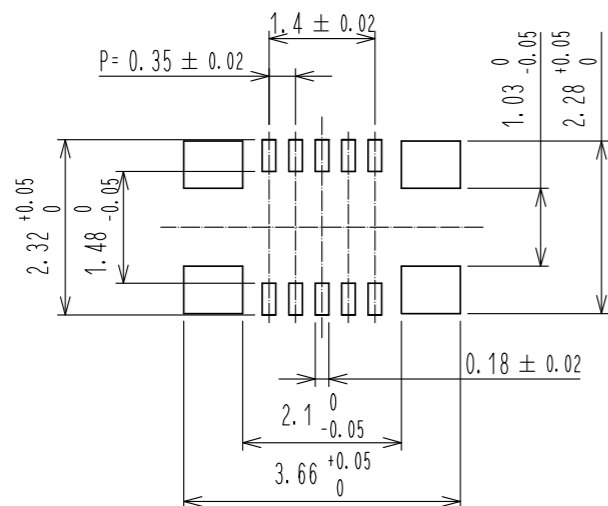
ENGAGEMENT FIGURE (50:1)



| 4 | PS | CLEAR (ENBOSSED CARRIER TAPE) | | | | | | |
|-------|-----------------|-------------------------------|----------|--------------|------------------------------|-----------------------------------|---------|------|
| 3 | PHOSPHOR BRONZE | 3 | 7 | PS | CLEAR (REINFORCEMENT COLLAR) | | | |
| 2 | PHOSPHOR BRONZE | 2 | 6 | PS | BLACK (PLASTIC REEL) | | | |
| 1 | LCP | UL94 V-0, BLACK | 5 | POLYESTER | CLEAR (COVER TAPE) | | | |
| NO. | MATERIAL | FINISH . REMARKS | NO. | MATERIAL | FINISH . REMARKS | | | |
| UNITS | mm | SCALE | 10 : 1 | COUNT | DESCRIPTION OF REVISIONS | DESIGNED | CHECKED | DATE |
| HRS | | HIROSE ELECTRIC CO., LTD. | APPROVED | MO. ISHIDA | 16.01.08 | DRAWING NO. EDC-355885-53-01 | | |
| | | | CHECKED | TS. MIYAZAKI | 16.01.08 | PART NO. BM15FR0.8-10DS-0.35V(53) | | |
| | | | DESIGNED | SH. HOSODA | 16.01.07 | CODE NO. CL673-1225-5-53 | | |
| | | | DRAWN | KR. AJITO | 16.01.07 | 1/3 | | |

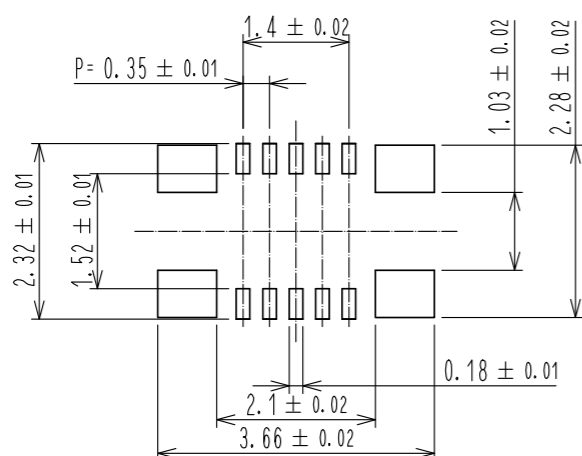
May.1.2023 Copyright 2023 HIROSE ELECTRIC CO., LTD. All Rights Reserved.
In case of consideration for using Automotive equipment / device which demand high reliability, kindly contact our sales window correspondents.

◆ RECOMMENDED PCB LAYOUT

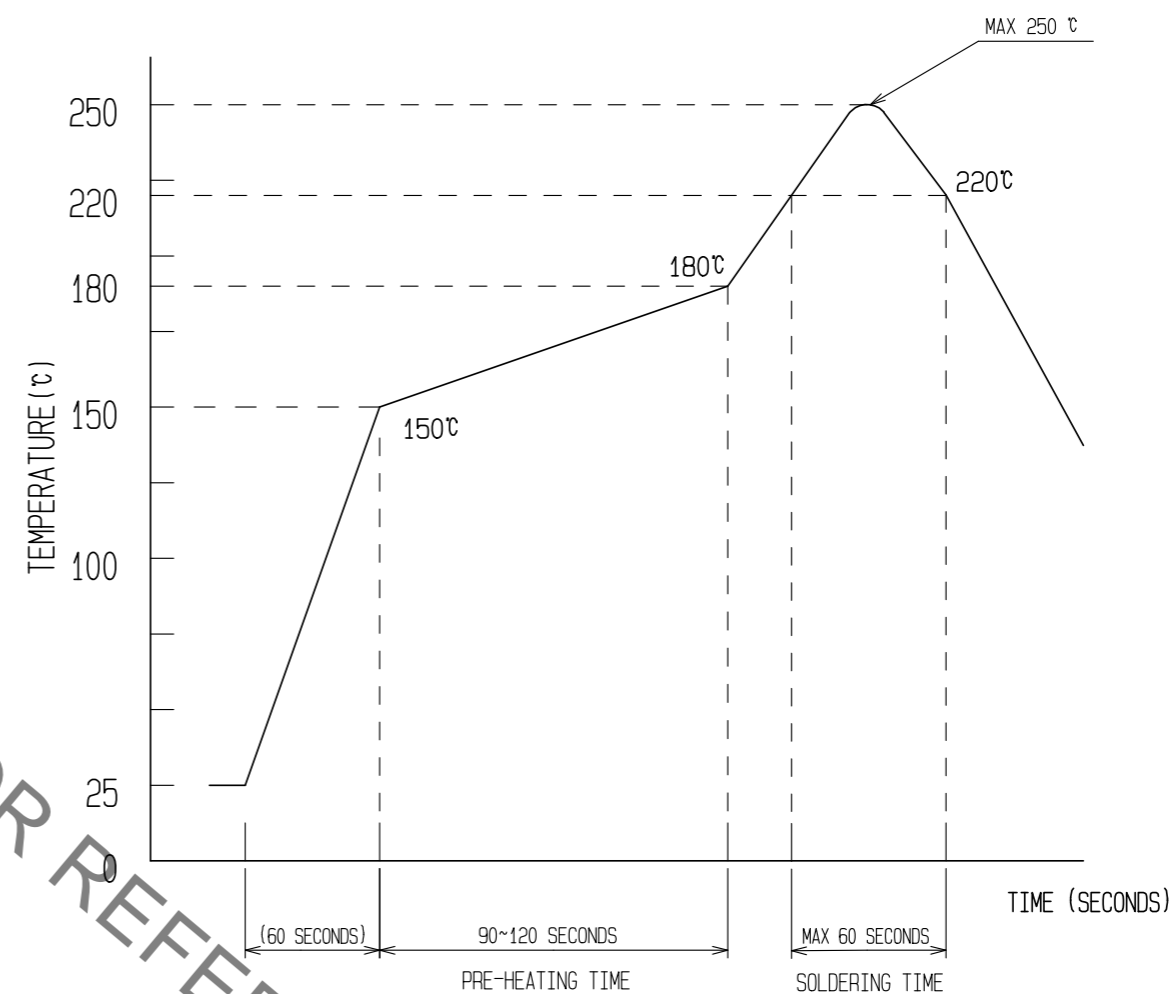


◆ RECOMMENDED METAL MASK DIMENSIONS

METAL MASK THICKNESS : 100 μm



5 RECOMMENDED REFLOW TEMPERATURE PROFILE USING LEAD-FREE SOLDER PASTE.



- REFLOW METHOD: IR REFLOW
NUMBER OF REFLOW CYCLES: 2 CYCLES MAX.
- REFLOW TIME
DURATION ABOVE 220°C: 60 SEC. MAX.
(PEAK TEMPERATURE: 250°C MAX)
 - PRE-HEAT TIME
PRE-HEAT TEMPERATURE(MIN): 150°C
PRE-HEAT TEMPERATURE(MAX): 180°C
PRE-HEAT TIME: 90-120 sec.

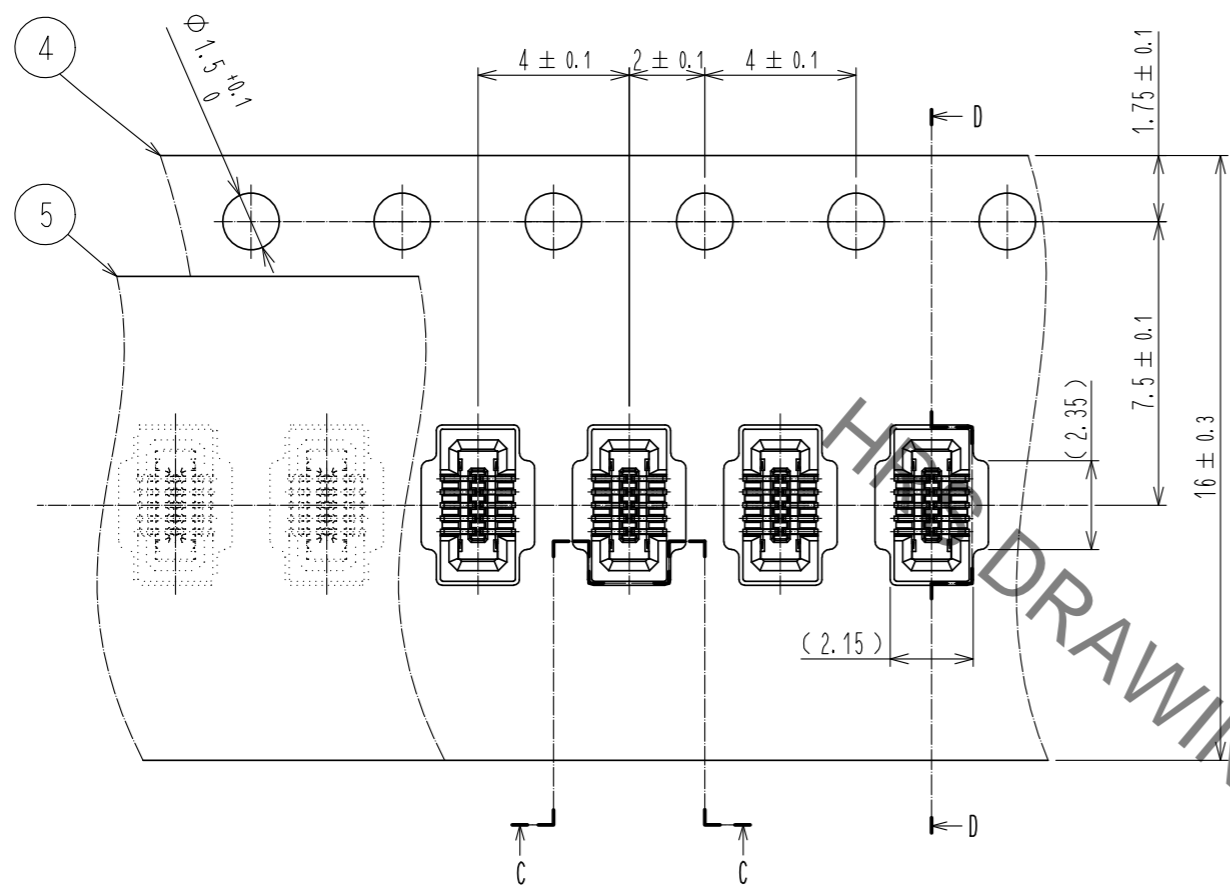
5 THIS TEMPERATURE PROFILE IS PER THE CONDITIONS SHOWN ABOVE. ADDITIONAL FACTORS, SUCH AS SOLDER PASTE TYPE, PCB SIZE AND OTHER MOUNTED COMPONENTS COULD AFFECT THE PROFILE, THEREFORE, A THOROUGH EVALUATION OF MOUNTING CONDITION IS REQUIRED PRIOR TO PRODUCTION. TEMPERATURE IS MEASURED AT CONTACT LEAD.

HRS DRAWING FOR REFERENCE

| | | |
|------------|-------------|--------------------------|
| HRS | DRAWING NO. | EDC-355885-53-01 |
| | PART NO. | BM15FR0.8-10DS-0.35V(53) |
| | CODE NO. | CL673-1225-5-53 |

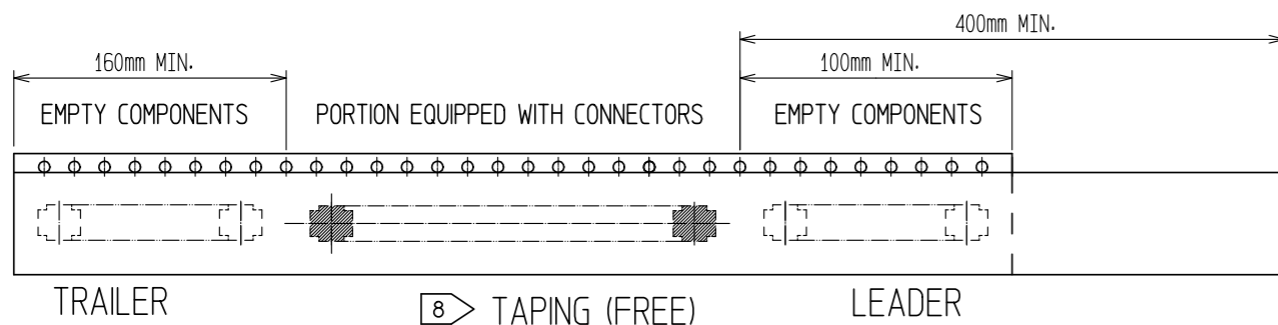
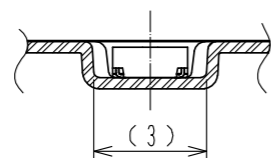
May.1.2023 Copyright 2023 HIROSE ELECTRIC CO., LTD. All Rights Reserved.
In case of consideration for using Automotive equipment / device which demand high reliability, kindly contact our sales window correspondents.

EMBOSED CARRIER TAPE PACKAGING (5:1)



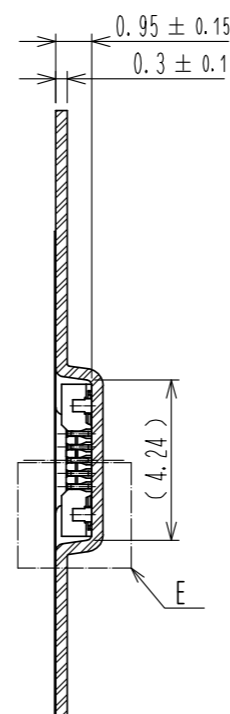
DIRECTION OF UNREELING
→

C-C (5:1)

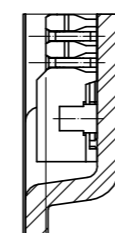


8 TAPING (FREE)

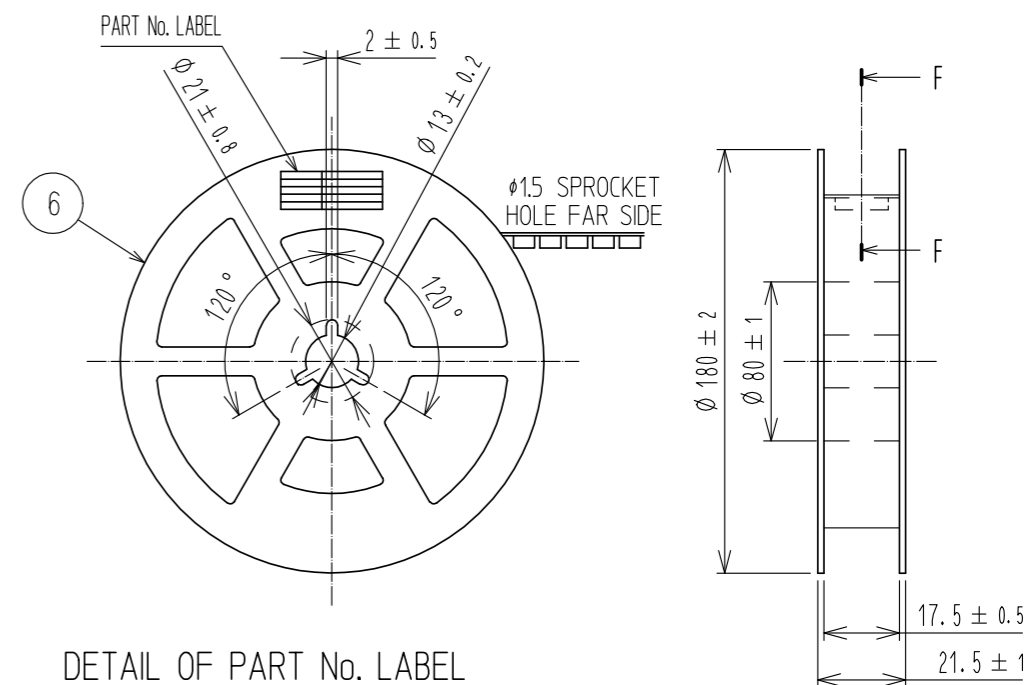
D-D (5:1)



E(10:1)



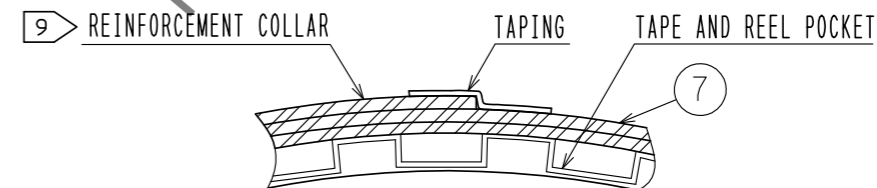
STYLE AND DIMENTION OF REEL (FREE)



DETAIL OF PART No. LABEL

| | |
|----------------------|--------------------------|
| SUPPLIER | |
| QUANTITY | |
| PART No. | |
| CODE No. | |
| DATE OF MANUFACTURED | |
| 製造年月日 | ** ** * |
| 製品コード | CL673-1225-5-53 |
| 製品名 | BM15FR0.8-10DS-0.35V(53) |
| 数量 | 1,000 |
| 納入者 | ヒロセ電機(株) |

F-F (FREE)



6. PER REEL 1000 CONNECTORS.

7. THE DIMENSIONS IN PARENTHESES ARE FOR REFERENCE.
8 REFER TO JIS C 0806 AND IEC 60286-3
(PACKAGING OF COMPONENTS FOR AUTOMATIC HANDLING)

9 AFTER PACKAGING, ROLL 2 METERS OF THE REINFORCEMENT COLLAR TO OUTER CIRCUMFERENCE OF TAPE AND REEL POCKET, AND TAPE DOWN AT THE END THE COLLAR.

HRS

| | |
|-------------|--------------------------|
| DRAWING NO. | EDC-355885-53-01 |
| PART NO. | BM15FR0.8-10DS-0.35V(53) |
| CODE NO. | CL673-1225-5-53 |

3/3