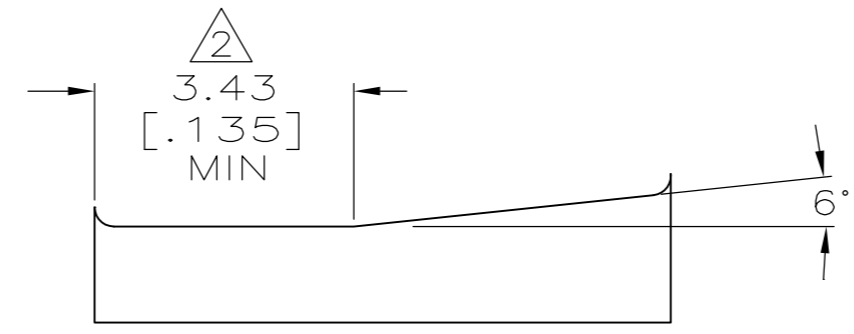
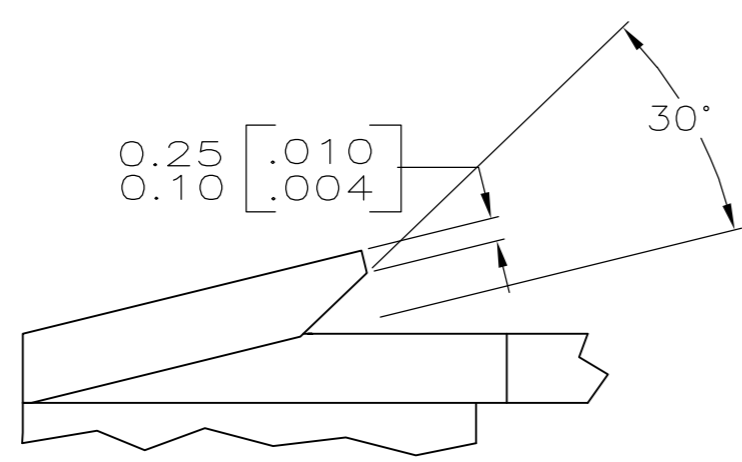
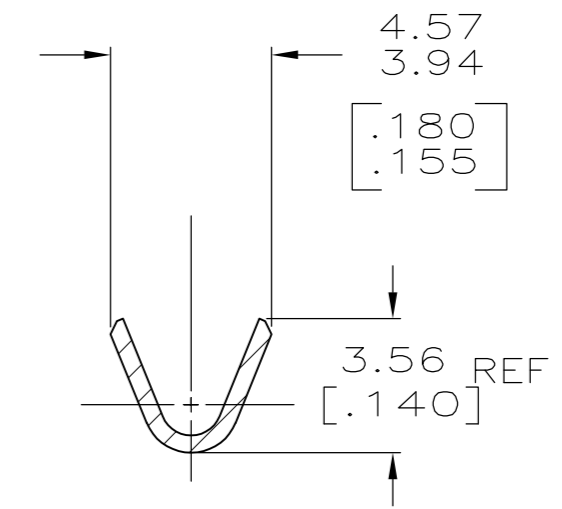
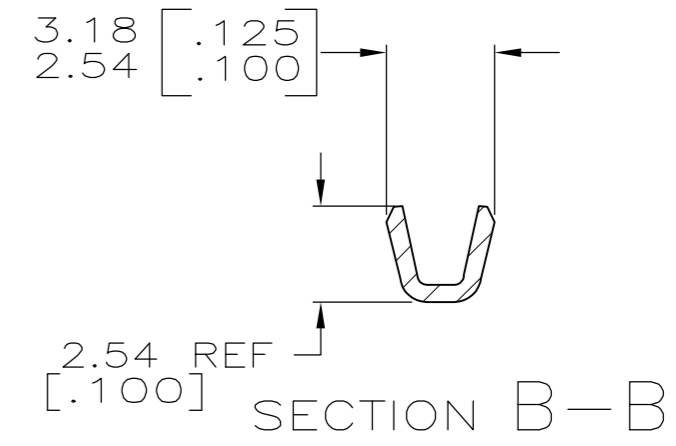
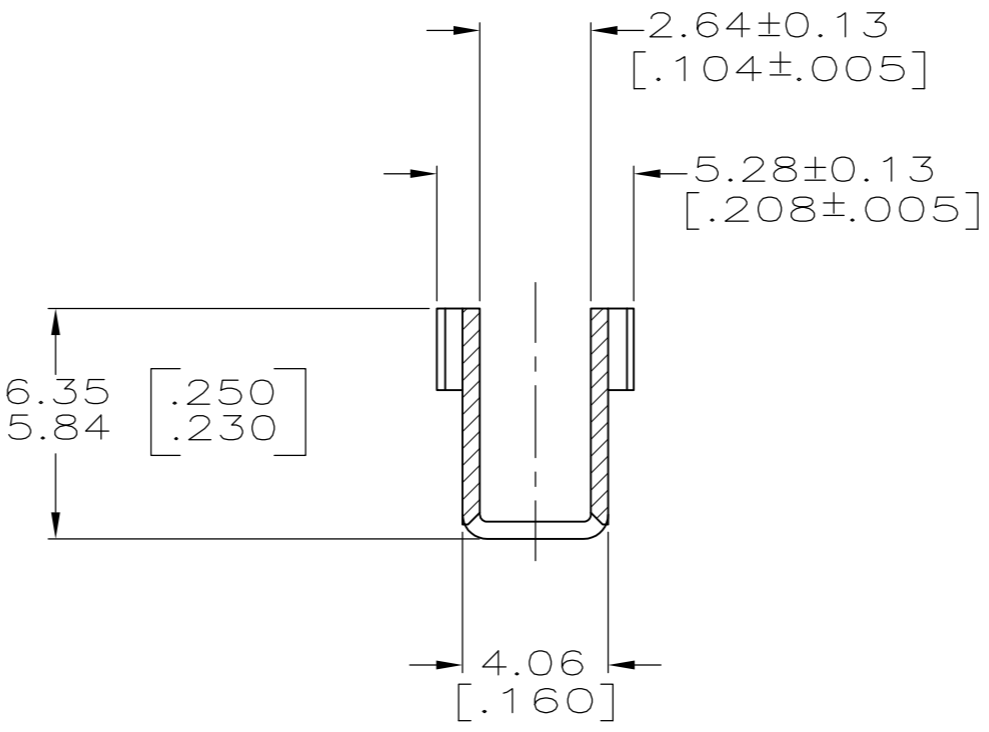
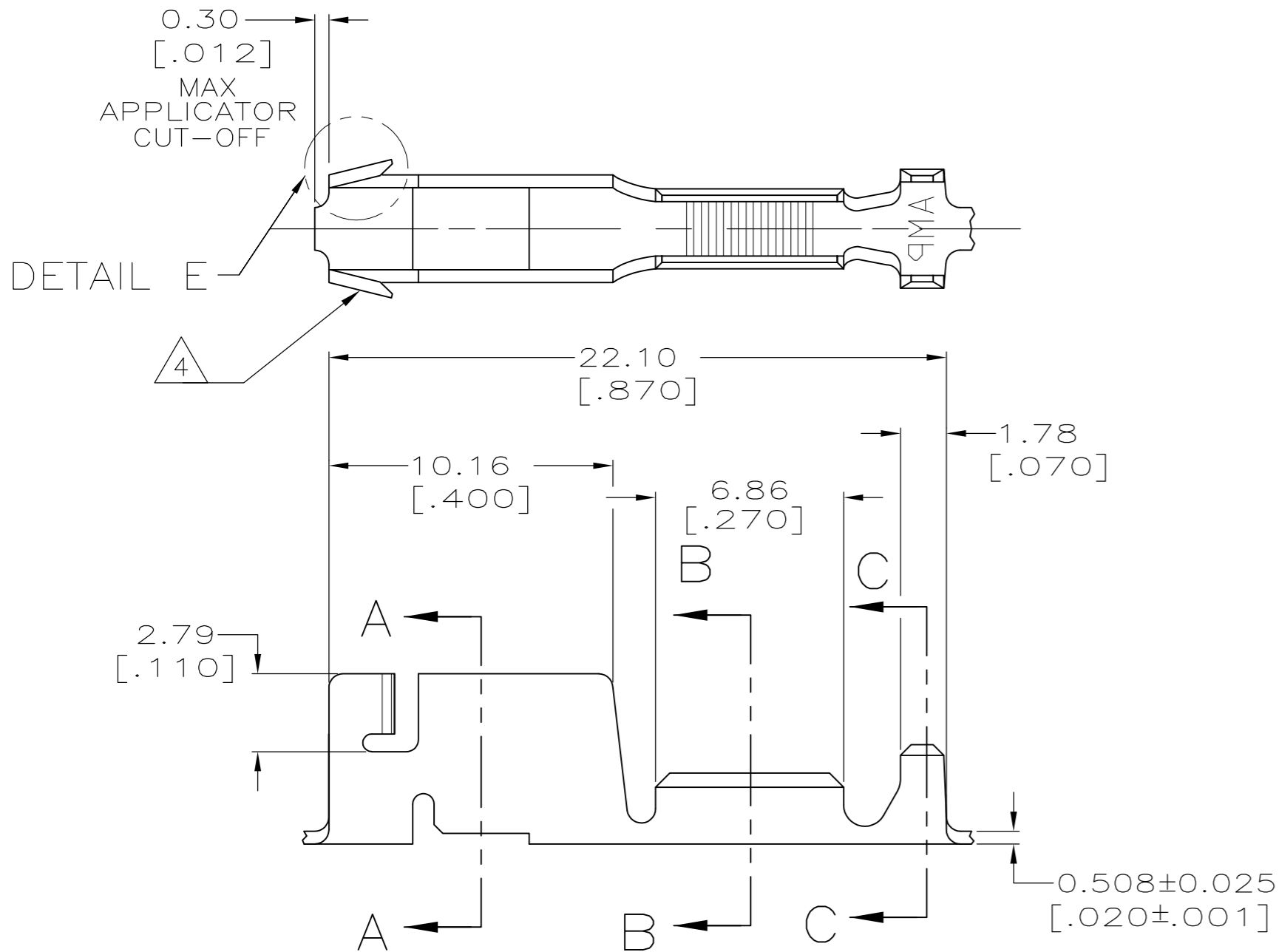


THIS DRAWING IS UNPUBLISHED. RELEASED FOR PUBLICATION  
 © COPYRIGHT - By - ALL RIGHTS RESERVED.

LOC	DIST	REVISIONS			
P	LTR	DESCRIPTION	DATE	DWN	APVD
AF	50	D	REVISED PER ECR-14-006300	28AUG2014	MKD/RRP



- 1 CONTINUOUS STRIP ON REELS WITH TERMINALS LOCATED ON 23.75 [.935] CENTERS.
- 2 MEASURE CRIMP HEIGHT IN THIS AREA.
- 3 FORMULA TO CALCULATE CRIMP HEIGHT:  

$$X = \frac{Y + 6900}{151900}$$

$$Y = \text{CMA}$$

$$X = \text{CRIMP HEIGHT}$$
- 4 HIGH RETENTION FEATURE.

DETAIL E  
SCALE 20:1

CRIMP CONFIGURATION

SECTION C-C

1.52-2.54 DIA [.060-.100]	400-1600 CMA	1217670-1
INSULATION RANGE	WIRE RANGE	PART NUMBER

THIS DRAWING IS A CONTROLLED DOCUMENT.		DWN JR RUTH 05JAN00	<b>TE</b> TE Connectivity	
DIMENSIONS: mm [INCHES]		CHK PETE DESANTIS 05JAN00		
TOLERANCES UNLESS OTHERWISE SPECIFIED:		APVD PETE DESANTIS 05JAN00	NAME RECEPTACLE, CLUSTER PIN, AMPLIVAR™, 3.18[.125] DIA	
0 PLC ± -	1 PLC ± -	PRODUCT SPEC 108-2008	SIZE A2	CAGE CODE 00779
2 PLC ± 0.25 [.010]	3 PLC ± -	APPLICATION SPEC 114-2019	DRAWING NO C=1217670	RESTRICTED TO -
4 PLC ± -	ANGLES ± -	WEIGHT -	SCALE 5:1	SHEET 1 of 1
MATERIAL H03 TIN-BRASS	FINISH POST TIN	CUSTOMER DRAWING	REV D	