

## CI26P-16T40-C-1X

Rev. 1-2023  
RoHS3 & REACH  
IP67 Front Face  
Piezoelectric Indicators



### Operating Characteristics

#### ELECTRICAL

Rated Voltage	12 VDC
Operating Voltage	8 to 16 VDC
Max Current at Vrated	60 mA

#### ACOUSTIC

Tone Category	Continuous
Description	Steady
Center $f$	400 ± 100 Hz
Min SPL at Vrated	95 dB
Test Conditions	10 cm

Typical Output Sound Level ± 4 dB(A), with Type 2 Meter



Input Voltage (V)

Input Current (mA)

### Physical Characteristics

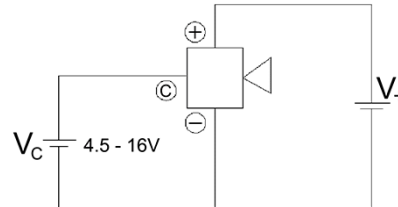
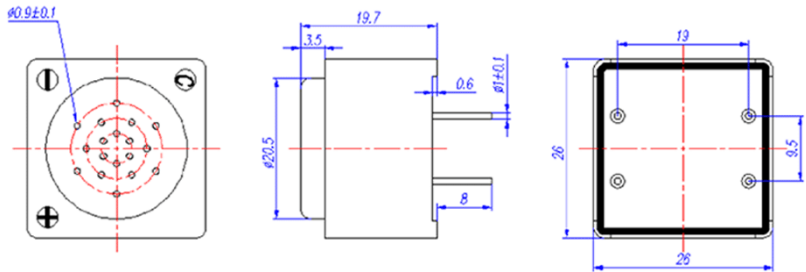
#### MATERIALS

Housing	Black Noryl
Diaphragm	Nickel Alloy
PC Pin	Tin Plated Brass

#### TEMPERATURE RANGES

Operating	-40 to +105 °C
Storage	-40 to +105 °C

Weight 7.5 g



General tolerance = ±0.5 mm and all measurements in mm unless otherwise noted.

Revision	Description	By	Date
0-2020	Original Specification	SP	2020-06-16
1-2023	Added Circuit Diagram	AL	2023-01-05

Warranty: For a period of one (1) year from date of shipping under normal operations conditions. This warranty does not apply to products damaged through misuse, abuse, improper installation, alteration, rework, or attempt to repair. IP Rating ensures functionality after water has been drained fully from device.

The information contained herein is believed to be correct, but no guarantee or warranty, express or implied, with respect to accuracy, completeness or results is extended and no liability is assumed. Challenge Electronics reserves the right to make changes in any specification, data or material contained herein.