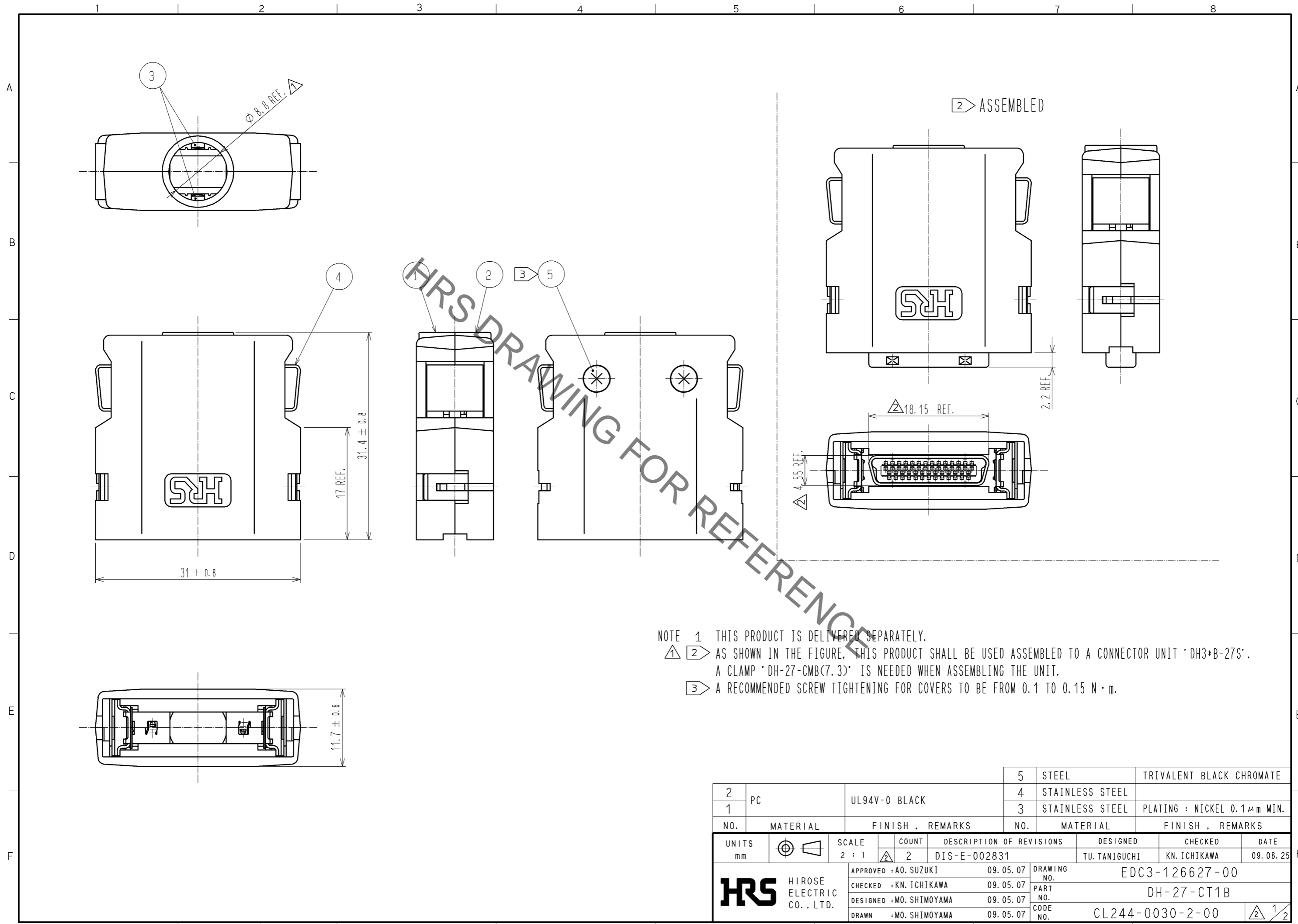


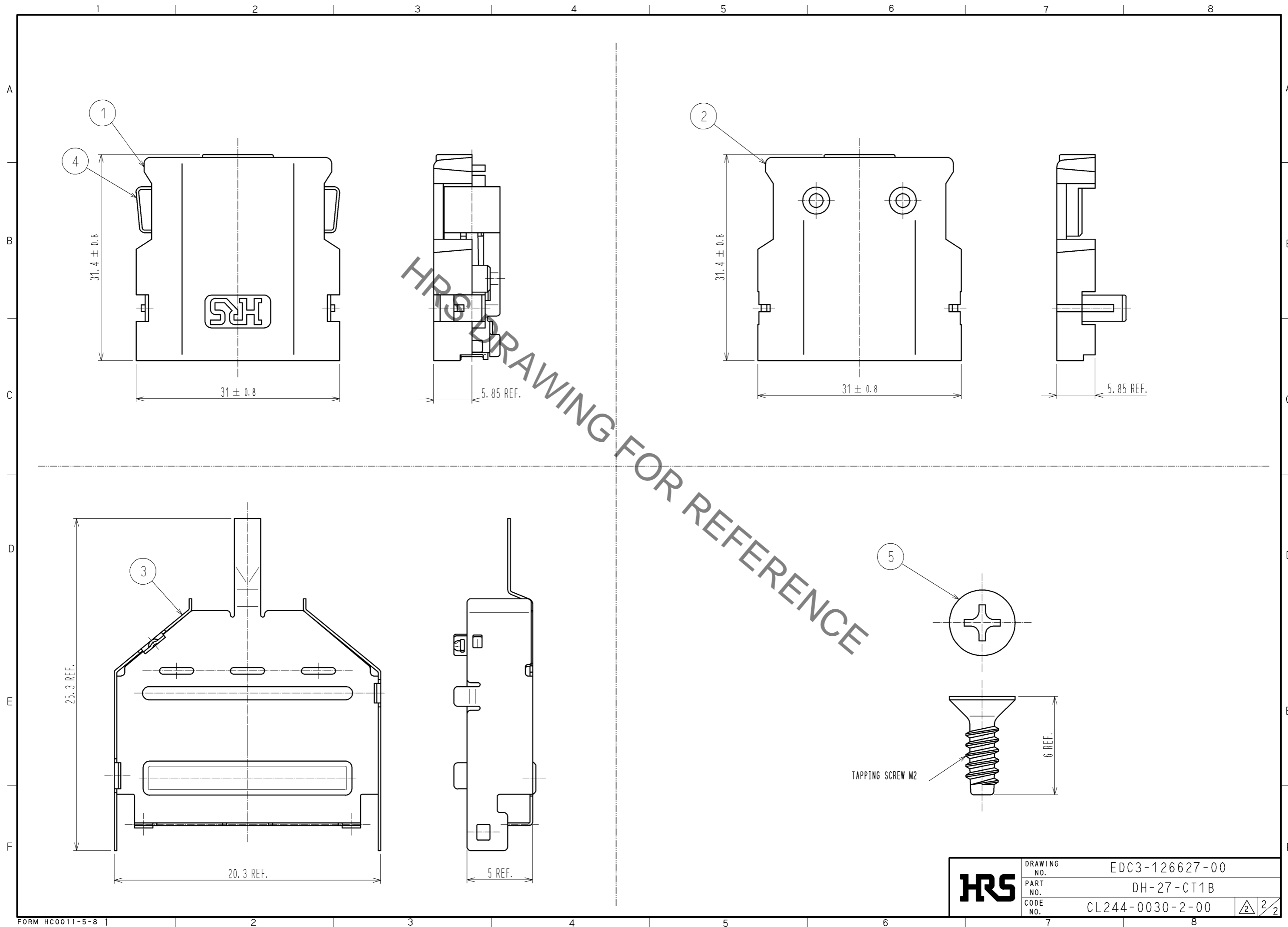
May.1.2023 Copyright 2023 HIROSE ELECTRIC CO., LTD. All Rights Reserved.  
In case of consideration for using Automotive equipment / device which demand high reliability, kindly contact our sales window correspondents.



NOTE 1 THIS PRODUCT IS DELIVERED SEPARATELY.  
 ▲ 2 AS SHOWN IN THE FIGURE, THIS PRODUCT SHALL BE USED ASSEMBLED TO A CONNECTOR UNIT 'DH3\*B-27S'.  
 A CLAMP 'DH-27-CMB(7.3)' IS NEEDED WHEN ASSEMBLING THE UNIT.  
 3 A RECOMMENDED SCREW TIGHTENING FOR COVERS TO BE FROM 0.1 TO 0.15 N · m.

	2	PC	UL94V-0 BLACK		5	STEEL	TRIVALENT BLACK CHROMATE	
	1				4	STAINLESS STEEL		
					3	STAINLESS STEEL	PLATING : NICKEL 0.1 μm MIN.	
NO.	MATERIAL	FINISH . REMARKS		NO.	MATERIAL	FINISH . REMARKS		
UNITS mm		SCALE 2 : 1	COUNT 2	DESCRIPTION OF REVISIONS DIS-E-002831		DESIGNED TU. TANIGUCHI	CHECKED KN. ICHIKAWA	DATE 09.06.25
<b>HRS</b> HIROSE ELECTRIC CO., LTD.		APPROVED : A0. SUZUKI	09.05.07	DRAWING NO. EDC3-126627-00				
		CHECKED : KN. ICHIKAWA	09.05.07	PART NO. DH-27-CT1B				
		DESIGNED : MO. SHIMOYAMA	09.05.07	CODE NO. CL244-0030-2-00				
		DRAWN : MO. SHIMOYAMA	09.05.07			1/2		

May.1.2023 Copyright 2023 HIROSE ELECTRIC CO., LTD. All Rights Reserved.  
In case of consideration for using Automotive equipment / device which demand high reliability, kindly contact our sales window correspondents.



<b>HRS</b>	DRAWING NO.	EDC3-126627-00
	PART NO.	DH-27-CT1B
	CODE NO.	CL244-0030-2-00
		2/2