

ITEM	DESCRIPTION
1	SCREW
2	COVER ASSEMBLY
3	INSERT ASSEMBLY
4	GASKET

S54209NR041**

SERIES _____
 S54= INTERNAL THREAD FORM B INDUSTRIAL
 POLES _____
 2= 2 POLE
 THREAD _____
 09= PG9, M2= M12x1.5, M6= M19x1.5
 MATERIAL AND HOUSING COLOUR _____
 G= PA6 GRAY, N= PA6 BLACK, T= TRANSPARENT
 CIRCUIT _____
 SEE DETAILS IN CATALOGUE
 VOLTAGE _____
 SEE DETAILS IN CATALOGUE
 SCREW AND GASKET _____
 1= NBR PROFILE GASKET & SCREW
 2= NBR FLAT GASKET & SCREW
 3= WHITE SILICON PROFILE GASKET & SCREW
 4= WHITE SILICON FLAT GASKET & SCREW
 A= NBR PROFILE GASKET & SCREW+2mm
 NON STANDARD COMPONENTS _____
 14= PACKED IN NEUTRAL BAG
 P7= IP67 COMPLIANT
 89= DIODE IN SERIES WITH PIN 1
 20= SPRING CLAMP TERMINALS
 AF= MOUNTED FIXING SCREW

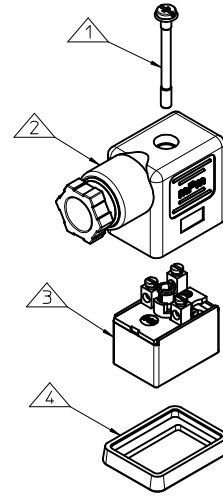
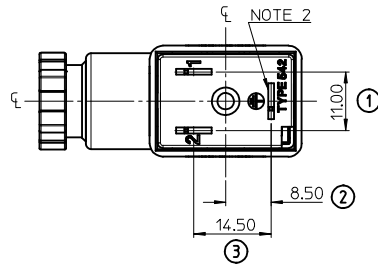
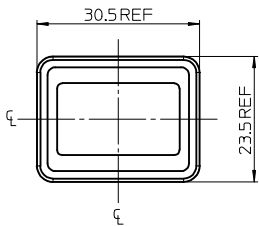
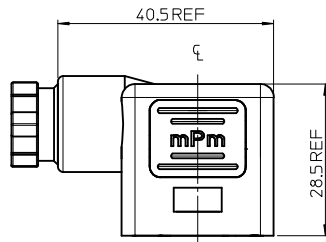
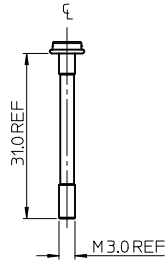
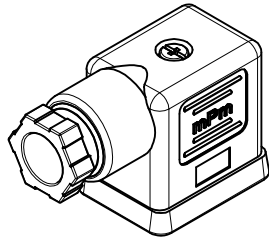
- NOTES
- PLEASE SEE SHEET 2 FOR CURRENTLY CONFIGURED PART NUMBERS. FOR SPECIFIC PART NUMBERS PLEASE CONTACT SALES OR CONSULT THE INTELLIGENT PART NUMBERS IN THE TABLE ATTACHED.
 - EARTH POSITION SHOWN, H12
 - PRODUCT SPEC: SEE PS-121201-001, WITH EXCEPTION.
 - FOR PACKAGING SEE PACKAGING SPEC PK-121064-S54.

LAST INSPECTION NUMBER 3

<p>UPDATED NOTE 3 EC NO: IFC2015-1871 DRWN:BCAFFREY 2015/04/28 CHKD: APPR:STGRUFFIN 2015/05/13</p>	<p>QUALITY SYMBOLS ▽=0 ▽=0</p>	<p>GENERAL TOLERANCES (UNLESS SPECIFIED)</p> <table border="1"> <thead> <tr> <th></th> <th>mm</th> <th>INCH</th> </tr> </thead> <tbody> <tr> <td>4 PLACES</td> <td>±---</td> <td>±---</td> </tr> <tr> <td>3 PLACES</td> <td>±---</td> <td>±---</td> </tr> <tr> <td>2 PLACES</td> <td>±0.1</td> <td>±---</td> </tr> <tr> <td>1 PLACE</td> <td>±0.2</td> <td>±---</td> </tr> <tr> <td colspan="3">ANGULAR ±---°</td> </tr> </tbody> </table>			mm	INCH	4 PLACES	±---	±---	3 PLACES	±---	±---	2 PLACES	±0.1	±---	1 PLACE	±0.2	±---	ANGULAR ±---°			<p>DIMENSION STYLE MM ONLY</p>	<p>SCALE 1.5:1</p>	<p>DESIGN UNITS METRIC</p>	<p>THIRD ANGLE PROJECTION</p>
			mm	INCH																					
4 PLACES	±---	±---																							
3 PLACES	±---	±---																							
2 PLACES	±0.1	±---																							
1 PLACE	±0.2	±---																							
ANGULAR ±---°																									
<p>DRAFT WHERE APPLICABLE MUST REMAIN WITHIN DIMENSIONS</p>		<p>DRAWN BY: DSHEA DATE: 2011/06/03</p> <p>CHECKED BY: DMAHER DATE: 2011/06/08</p> <p>APPROVED BY: EFOLAN DATE: 2011/06/22</p>	<p>TITLE S54 SERIES INTERNAL THREAD TYPE B INDUSTRIAL</p>		<p>MOLEX INCORPORATED</p>																				
		<p>MATERIAL NO. SEE SHEET 2</p>		<p>DOCUMENT NO. SD-121064-008</p>		<p>SHEET NO. 1 OF 2</p>																			
<p>THIS DRAWING CONTAINS INFORMATION THAT IS PROPRIETARY TO MOLEX INCORPORATED AND SHOULD NOT BE USED WITHOUT WRITTEN PERMISSION</p>																									

PART NO	MPM NO	DESCRIPTION	CIRCUIT	VOLTAGE	INDICATOR
1210641033	S54209GR051	TYPE B INDUSTRIAL 2P PG9 GRAY NBR PROFILE GASKET	R0	230V	VDR
1210641036	S54209NR021	TYPE B INDUSTRIAL 2P PG9 BLACK NBR PROFILE GASKET	R0	24V	VDR
1210641037	S54209NR041	TYPE B INDUSTRIAL 2P PG9 BLACK NBR PROFILE GASKET	R0	115V	VDR
1210641038	S54209NR051	TYPE B INDUSTRIAL 2P PG9 BLACK NBR PROFILE GASKET	R0	230V	VDR
1210641045	S54209TA051	TYPE B INDUSTRIAL 2P PG9 TRANSPARENT NBR PROFILE GASKET	A0	230V	LAMP
1210641047	S54209TA121	TYPE B INDUSTRIAL 2P PG9 TRANSPARENT NBR PROFILE GASKET	A1	24V	RED LED
1210641049	S54209TA141	TYPE B INDUSTRIAL 2P PG9 TRANSPARENT NBR PROFILE GASKET	A1	115V	RED LED
1210641051	S54209TA151	TYPE B INDUSTRIAL 2P PG9 TRANSPARENT NBR PROFILE GASKET	A1	230V	RED LED
1210641057	S54209TC321	TYPE B INDUSTRIAL 2P PG9 TRANSPARENT NBR PROFILE GASKET	C3	24V	RED LED
1210641058	S54209TC322	TYPE B INDUSTRIAL 2P PG9 TRANSPARENT NBR FLAT GASKET	C3	24V	RED LED
1210641064	S54209TC421	TYPE B INDUSTRIAL 2P PG9 TRANSPARENT NBR PROFILE GASKET	C4	24V	RED LED
1210641065	S54209TC422	TYPE B INDUSTRIAL 2P PG9 TRANSPARENT NBR FLAT GASKET	C4	24V	RED LED
1210641067	S54209TC441	TYPE B INDUSTRIAL 2P PG9 TRANSPARENT NBR PROFILE GASKET	C4	115V	RED LED
1210641069	S54209TC451	TYPE B INDUSTRIAL 2P PG9 TRANSPARENT NBR PROFILE GASKET	C4	230V	RED LED
1210641070	S54209TC452	TYPE B INDUSTRIAL 2P PG9 TRANSPARENT NBR FLAT GASKET	C4	230V	RED LED
1210641071	S54209TC4B1	TYPE B INDUSTRIAL 2P PG9 TRANSPARENT NBR PROFILE GASKET	C4	24V	GREEN LED
1210641072	S54209TC4C1	TYPE B INDUSTRIAL 2P PG9 TRANSPARENT NBR PROFILE GASKET	C4	48V	GREEN LED
1210641073	S54209TC4D1	TYPE B INDUSTRIAL 2P PG9 TRANSPARENT NBR PROFILE GASKET	C4	115V	GREEN LED
1210641074	S54209TC4E1	TYPE B INDUSTRIAL 2P PG9 TRANSPARENT NBR PROFILE GASKET	C4	230V	GREEN LED
1210641075	S54209TC4H1	TYPE B INDUSTRIAL 2P PG9 TRANSPARENT NBR PROFILE GASKET	C4	24V	YELLOW LED
1210641076	S54209TC4H2	TYPE B INDUSTRIAL 2P PG9 TRANSPARENT NBR FLAT GASKET	C4	24V	YELLOW LED
1210641079	S54209TC4M2	TYPE B INDUSTRIAL 2P PG9 TRANSPARENT NBR FLAT GASKET	C4	230V	YELLOW LED
1210641084	S54209TS021	TYPE B INDUSTRIAL 2P PG9 TRANSPARENT NBR PROFILE GASKET	S0	24V	RED LED
1210641085	S54209TS0B1	TYPE B INDUSTRIAL 2P PG9 TRANSPARENT NBR PROFILE GASKET	S0	24V	GREEN LED
1210641272	S54209TC4L2	TYPE B INDUSTRIAL 2P PG9 TRANSPARENT NBR FLAT GASKET	C4	115V	YELLOW LED
1210641307	S54209TC42A	TYPE B INDUSTRIAL 2P PG9 TRANSPARENT NBR PROFILE GASKET & SCREW +2mm	C4	24V	RED LED
1210641357	S54209TC45A	TYPE B INDUSTRIAL 2P PG9 TRANSPARENT NBR PROFILE GASKET & SCREW +2mm	C4	230V	RED LED
1210641362	S54209TC44A	TYPE B INDUSTRIAL 2P PG9 TRANSPARENT NBR PROFILE GASKET & SCREW +2mm	C4	115V	RED LED
1210641384	S54209TS0H1	TYPE B INDUSTRIAL 2P PG9 TRANSPARENT NBR PROFILE GASKET	S0	24V	YELLOW LED
1210641399	S54209TC3B1	TYPE B INDUSTRIAL 2P PG9 TRANSPARENT NBR PROFILE GASKET	C3	24V	GREEN LED
1210641417	S54209TC4B1P7	TYPE B INDUSTRIAL 2P PG9 TRANSPARENT NBR PROFILE GASKET IP67 COMPLIANT	C4	24V	GREEN LED
1210641430	S54209TR051	TYPE B INDUSTRIAL 2P PG9 TRANSPARENT NBR PROFILE GASKET	R0	230V	VDR
1210641456	S542M6TC321	TYPE B INDUSTRIAL 2P M16x1.5 TRANSPARENT NBR PROFILE GASKET	C3	24V	RED LED
1210641512	S54209TR2B2	TYPE B INDUSTRIAL 2P PG9 TRANSPARENT NBR FLAT GASKET	R2	24V	GREEN LED
1210641592	S542M2TA1D1	TYPE B INDUSTRIAL 2P M12x1.5 TRANSPARENT NBR PROFILE GASKET	A1	115V	GREEN LED
1210641614	S542M2TS021	TYPE B INDUSTRIAL 2P M12x1.5 TRANSPARENT NBR PROFILE GASKET	S0	24V	RED LED
1210641700	S54209TC424	TYPE B INDUSTRIAL 2P PG9 TRANSPARENT SILICON FLAT GASKET	C4	24V	RED LED
1210650385	S54209NE05189	TYPE B INDUSTRIAL 2P PG9 BLACK NBR PROFILE GASKET DIODE IN SERIES WITH PIN 1	E0	230V	DIODE
1210650413	S54209TC4B12Q	TYPE B INDUSTRIAL 2P PG9 TRANSPARENT NBR PROFILE GASKET WITH SPRING CLIP TERMINALS	C4	24V	GREEN LED
1210650485	S54209TC42114	TYPE B INDUSTRIAL 2P PG9 TRANSPARENT NBR PROFILE GASKET IN NEUTRAL BAG	C4	24V	RED LED
1210650492	S54209TC45114	TYPE B INDUSTRIAL 2P PG9 TRANSPARENT NBR PROFILE GASKET IN NEUTRAL BAG	C4	230V	RED LED
1210650596	S542M6TC421	TYPE B INDUSTRIAL 2P M16x1.5 TRANSPARENT NBR PROFILE GASKET	C4	24V	RED LED
1210641792	S542M6TC321AF	TYPE B INDUSTRIAL 2P M16x1.5 TRANSPARENT NBR PROFILE GASKET, MOUNTED FIXING SCREW	C3	24V	RED LED
1210641080	S54209TR221	TYPE B INDUSTRIAL 2P PG9 TRANSPARENT NBR PROFILE GASKET	R2	24V	RED LED
1210641082	S54209TR251	TYPE B INDUSTRIAL 2P PG9 TRANSPARENT NBR PROFILE GASKET	R2	230V	RED LED
1210641803	S54209TR2M2	TYPE B INDUSTRIAL 2P PG9 TRANSPARENT NBR FLAT GASKET	R2	230V	YELLOW LED
1210641083	S54209TR2H1	TYPE B INDUSTRIAL 2P PG9 TRANSPARENT NBR PROFILE GASKET	R2	24V	YELLOW LED
1210641810	S54209TR2M1	TYPE B INDUSTRIAL 2P PG9 TRANSPARENT NBR PROFILE GASKET	R2	230V	YELLOW LED

SEE SHEET 1 EC NO: IPGZ015-1871 DRAWN: BCAFREY 2015/04/28 CHKD: CHIKO APPR: SUGIYAMA 2015/05/13 DESCRIPTION	QUALITY SYMBOLS ▽=0 ▽=0	GENERAL TOLERANCES (UNLESS SPECIFIED) <table border="1"> <tr> <th></th> <th>mm</th> <th>INCH</th> </tr> <tr> <td>4 PLACES</td> <td>± ---</td> <td>± ---</td> </tr> <tr> <td>3 PLACES</td> <td>± ---</td> <td>± ---</td> </tr> <tr> <td>2 PLACES</td> <td>± 0.1</td> <td>± ---</td> </tr> <tr> <td>1 PLACE</td> <td>± 0.2</td> <td>± ---</td> </tr> <tr> <td colspan="3">ANGULAR ± ---°</td> </tr> </table>		mm	INCH	4 PLACES	± ---	± ---	3 PLACES	± ---	± ---	2 PLACES	± 0.1	± ---	1 PLACE	± 0.2	± ---	ANGULAR ± ---°			DIMENSION STYLE MM ONLY DRAWN BY: DSHEA DATE: 2011/06/03 CHECKED BY: DMAHER DATE: 2011/06/08 APPROVED BY: EFOLAN DATE: 2011/06/22 MATERIAL NO.	SCALE 1.5:1 DESIGN UNITS METRIC THIRD ANGLE PROJECTION	TITLE S54 SERIES INTERNAL THREAD TYPE B INDUSTRIAL MOLEX INCORPORATED DOCUMENT NO.	SHEET NO. 2 OF 2
		mm	INCH																					
	4 PLACES	± ---	± ---																					
	3 PLACES	± ---	± ---																					
2 PLACES	± 0.1	± ---																						
1 PLACE	± 0.2	± ---																						
ANGULAR ± ---°																								
DRAFT WHERE APPLICABLE MUST REMAIN WITHIN DIMENSIONS		SEE TABLE		SD-121064-008		THIS DRAWING CONTAINS INFORMATION THAT IS PROPRIETARY TO MOLEX INCORPORATED AND SHOULD NOT BE USED WITHOUT WRITTEN PERMISSION																		



ITEM	DESCRIPTION
1	SCREW
2	COVER ASSEMBLY
3	INSERT ASSEMBLY
4	GASKET

S54209NR041**

SERIES _____
 S54= INTERNAL THREAD FORM B INDUSTRIAL
 POLES _____
 2= 2 POLE
 THREAD _____
 09= PG9, M2= M12x1.5, M6= M19x1.5
 MATERIAL AND HOUSING COLOUR _____
 G= PA6 GRAY, N= PA6 BLACK, T= TRANSPARENT
 CIRCUIT _____
 SEE DETAILS IN CATALOGUE
 VOLTAGE _____
 SEE DETAILS IN CATALOGUE
 SCREW AND GASKET _____
 1= NBR PROFILE GASKET & SCREW
 2= NBR FLAT GASKET & SCREW
 3= WHITE SILICON PROFILE GASKET & SCREW
 4= WHITE SILICON FLAT GASKET & SCREW
 A= NBR PROFILE GASKET & SCREW+2mm
 NON STANDARD COMPONENTS _____
 14= PACKED IN NEUTRAL BAG
 P7= IP67 COMPLIANT
 89= DIODE IN SERIES WITH PIN 1
 20= SPRING CLAMP TERMINALS
 AF= MOUNTED FIXING SCREW

- NOTES
- PLEASE SEE SHEET 2 FOR CURRENTLY CONFIGURED PART NUMBERS. FOR SPECIFIC PART NUMBERS PLEASE CONTACT SALES OR CONSULT THE INTELLIGENT PART NUMBERS IN THE TABLE ATTACHED.
 - EARTH POSITION SHOWN, H12
 - PRODUCT SPEC: SEE PS-121201-001, WITH EXCEPTION.
 - FOR PACKAGING SEE PACKAGING SPEC PK-121064-S54.

LAST INSPECTION NUMBER 3

<p>UPDATED NOTE 3 EC NO: IFC2015-1871 DRWN:BCAFFREY 2015/04/28 CHKD: APPR:STGRUFFIN 2015/05/13</p>	<p>QUALITY SYMBOLS</p> <p>▽=0</p> <p>▽=0</p>	<p>GENERAL TOLERANCES (UNLESS SPECIFIED)</p> <table border="1"> <thead> <tr> <th></th> <th>mm</th> <th>INCH</th> </tr> </thead> <tbody> <tr> <td>4 PLACES</td> <td>±---</td> <td>±---</td> </tr> <tr> <td>3 PLACES</td> <td>±---</td> <td>±---</td> </tr> <tr> <td>2 PLACES</td> <td>±0.1</td> <td>±---</td> </tr> <tr> <td>1 PLACE</td> <td>±0.2</td> <td>±---</td> </tr> <tr> <td colspan="3">ANGULAR ±---°</td> </tr> </tbody> </table>		mm	INCH	4 PLACES	±---	±---	3 PLACES	±---	±---	2 PLACES	±0.1	±---	1 PLACE	±0.2	±---	ANGULAR ±---°			<p>DIMENSION STYLE</p> <p>MM ONLY</p> <p>DRAWN BY _____ DATE _____</p> <p>OSHEA 2011/06/03</p> <p>CHECKED BY _____ DATE _____</p> <p>DMAHER 2011/06/08</p> <p>APPROVED BY _____ DATE _____</p> <p>EFOLAN 2011/06/22</p>	<p>SCALE</p> <p>1.5:1</p> <p>DESIGN UNITS</p> <p>METRIC</p> <p>THIRD ANGLE PROJECTION</p>	<p>TITLE</p> <p>S54 SERIES INTERNAL THREAD TYPE B INDUSTRIAL</p>	<p>MATERIAL NO.</p> <p>SEE SHEET 2</p>	<p>DOCUMENT NO.</p> <p>SD-121064-008</p>	<p>SHEET NO.</p> <p>1 OF 2</p>
		mm	INCH																							
	4 PLACES	±---	±---																							
	3 PLACES	±---	±---																							
2 PLACES	±0.1	±---																								
1 PLACE	±0.2	±---																								
ANGULAR ±---°																										
<p>DRAFT WHERE APPLICABLE MUST REMAIN WITHIN DIMENSIONS</p>		<p>THIS DRAWING CONTAINS INFORMATION THAT IS PROPRIETARY TO MOLEX INCORPORATED AND SHOULD NOT BE USED WITHOUT WRITTEN PERMISSION</p>		<p>MOLEX MOLEX INCORPORATED</p>		<p>1 OF 2</p>																				

PART NO	MPM NO	DESCRIPTION	CIRCUIT	VOLTAGE	INDICATOR
1210641033	S54209GR051	TYPE B INDUSTRIAL 2P PG9 GRAY NBR PROFILE GASKET	R0	230V	VDR
1210641036	S54209NR021	TYPE B INDUSTRIAL 2P PG9 BLACK NBR PROFILE GASKET	R0	24V	VDR
1210641037	S54209NR041	TYPE B INDUSTRIAL 2P PG9 BLACK NBR PROFILE GASKET	R0	115V	VDR
1210641038	S54209NR051	TYPE B INDUSTRIAL 2P PG9 BLACK NBR PROFILE GASKET	R0	230V	VDR
1210641045	S54209TA051	TYPE B INDUSTRIAL 2P PG9 TRANSPARENT NBR PROFILE GASKET	A0	230V	LAMP
1210641047	S54209TA121	TYPE B INDUSTRIAL 2P PG9 TRANSPARENT NBR PROFILE GASKET	A1	24V	RED LED
1210641049	S54209TA141	TYPE B INDUSTRIAL 2P PG9 TRANSPARENT NBR PROFILE GASKET	A1	115V	RED LED
1210641051	S54209TA151	TYPE B INDUSTRIAL 2P PG9 TRANSPARENT NBR PROFILE GASKET	A1	230V	RED LED
1210641057	S54209TC321	TYPE B INDUSTRIAL 2P PG9 TRANSPARENT NBR PROFILE GASKET	C3	24V	RED LED
1210641058	S54209TC322	TYPE B INDUSTRIAL 2P PG9 TRANSPARENT NBR FLAT GASKET	C3	24V	RED LED
1210641064	S54209TC421	TYPE B INDUSTRIAL 2P PG9 TRANSPARENT NBR PROFILE GASKET	C4	24V	RED LED
1210641065	S54209TC422	TYPE B INDUSTRIAL 2P PG9 TRANSPARENT NBR FLAT GASKET	C4	24V	RED LED
1210641067	S54209TC441	TYPE B INDUSTRIAL 2P PG9 TRANSPARENT NBR PROFILE GASKET	C4	115V	RED LED
1210641069	S54209TC451	TYPE B INDUSTRIAL 2P PG9 TRANSPARENT NBR PROFILE GASKET	C4	230V	RED LED
1210641070	S54209TC452	TYPE B INDUSTRIAL 2P PG9 TRANSPARENT NBR FLAT GASKET	C4	230V	RED LED
1210641071	S54209TC4B1	TYPE B INDUSTRIAL 2P PG9 TRANSPARENT NBR PROFILE GASKET	C4	24V	GREEN LED
1210641072	S54209TC4C1	TYPE B INDUSTRIAL 2P PG9 TRANSPARENT NBR PROFILE GASKET	C4	48V	GREEN LED
1210641073	S54209TC4D1	TYPE B INDUSTRIAL 2P PG9 TRANSPARENT NBR PROFILE GASKET	C4	115V	GREEN LED
1210641074	S54209TC4E1	TYPE B INDUSTRIAL 2P PG9 TRANSPARENT NBR PROFILE GASKET	C4	230V	GREEN LED
1210641075	S54209TC4H1	TYPE B INDUSTRIAL 2P PG9 TRANSPARENT NBR PROFILE GASKET	C4	24V	YELLOW LED
1210641076	S54209TC4H2	TYPE B INDUSTRIAL 2P PG9 TRANSPARENT NBR FLAT GASKET	C4	24V	YELLOW LED
1210641079	S54209TC4M2	TYPE B INDUSTRIAL 2P PG9 TRANSPARENT NBR FLAT GASKET	C4	230V	YELLOW LED
1210641084	S54209TS021	TYPE B INDUSTRIAL 2P PG9 TRANSPARENT NBR PROFILE GASKET	S0	24V	RED LED
1210641085	S54209TS0B1	TYPE B INDUSTRIAL 2P PG9 TRANSPARENT NBR PROFILE GASKET	S0	24V	GREEN LED
1210641272	S54209TC4L2	TYPE B INDUSTRIAL 2P PG9 TRANSPARENT NBR FLAT GASKET	C4	115V	YELLOW LED
1210641307	S54209TC42A	TYPE B INDUSTRIAL 2P PG9 TRANSPARENT NBR PROFILE GASKET & SCREW +2mm	C4	24V	RED LED
1210641357	S54209TC45A	TYPE B INDUSTRIAL 2P PG9 TRANSPARENT NBR PROFILE GASKET & SCREW +2mm	C4	230V	RED LED
1210641362	S54209TC44A	TYPE B INDUSTRIAL 2P PG9 TRANSPARENT NBR PROFILE GASKET & SCREW +2mm	C4	115V	RED LED
1210641384	S54209TS0H1	TYPE B INDUSTRIAL 2P PG9 TRANSPARENT NBR PROFILE GASKET	S0	24V	YELLOW LED
1210641399	S54209TC3B1	TYPE B INDUSTRIAL 2P PG9 TRANSPARENT NBR PROFILE GASKET	C3	24V	GREEN LED
1210641417	S54209TC4B1P7	TYPE B INDUSTRIAL 2P PG9 TRANSPARENT NBR PROFILE GASKET IP67 COMPLIANT	C4	24V	GREEN LED
1210641430	S54209TR051	TYPE B INDUSTRIAL 2P PG9 TRANSPARENT NBR PROFILE GASKET	R0	230V	VDR
1210641456	S542M6TC321	TYPE B INDUSTRIAL 2P M16x1.5 TRANSPARENT NBR PROFILE GASKET	C3	24V	RED LED
1210641512	S54209TR2B2	TYPE B INDUSTRIAL 2P PG9 TRANSPARENT NBR FLAT GASKET	R2	24V	GREEN LED
1210641592	S542M2TA1D1	TYPE B INDUSTRIAL 2P M12x1.5 TRANSPARENT NBR PROFILE GASKET	A1	115V	GREEN LED
1210641614	S542M2TS021	TYPE B INDUSTRIAL 2P M12x1.5 TRANSPARENT NBR PROFILE GASKET	S0	24V	RED LED
1210641700	S54209TC424	TYPE B INDUSTRIAL 2P PG9 TRANSPARENT SILICON FLAT GASKET	C4	24V	RED LED
1210650385	S54209NE05189	TYPE B INDUSTRIAL 2P PG9 BLACK NBR PROFILE GASKET DIODE IN SERIES WITH PIN 1	E0	230V	DIODE
1210650413	S54209TC4B12Q	TYPE B INDUSTRIAL 2P PG9 TRANSPARENT NBR PROFILE GASKET WITH SPRING CLIP TERMINALS	C4	24V	GREEN LED
1210650485	S54209TC42114	TYPE B INDUSTRIAL 2P PG9 TRANSPARENT NBR PROFILE GASKET IN NEUTRAL BAG	C4	24V	RED LED
1210650492	S54209TC45114	TYPE B INDUSTRIAL 2P PG9 TRANSPARENT NBR PROFILE GASKET IN NEUTRAL BAG	C4	230V	RED LED
1210650596	S542M6TC421	TYPE B INDUSTRIAL 2P M16x1.5 TRANSPARENT NBR PROFILE GASKET	C4	24V	RED LED
1210641792	S542M6TC321AF	TYPE B INDUSTRIAL 2P M16x1.5 TRANSPARENT NBR PROFILE GASKET, MOUNTED FIXING SCREW	C3	24V	RED LED
1210641080	S54209TR221	TYPE B INDUSTRIAL 2P PG9 TRANSPARENT NBR PROFILE GASKET	R2	24V	RED LED
1210641082	S54209TR251	TYPE B INDUSTRIAL 2P PG9 TRANSPARENT NBR PROFILE GASKET	R2	230V	RED LED
1210641803	S54209TR2M2	TYPE B INDUSTRIAL 2P PG9 TRANSPARENT NBR FLAT GASKET	R2	230V	YELLOW LED
1210641083	S54209TR2H1	TYPE B INDUSTRIAL 2P PG9 TRANSPARENT NBR PROFILE GASKET	R2	24V	YELLOW LED
1210641810	S54209TR2M1	TYPE B INDUSTRIAL 2P PG9 TRANSPARENT NBR PROFILE GASKET	R2	230V	YELLOW LED

SEE SHEET 1 EC NO: IPG2015-1871 DRAWN: BCAFREY 2015/04/28 CHKD: CHIKO APPR: SUGRIFIN 2015/05/13 DESCRIPTION	QUALITY SYMBOLS ▽=0 ▽=0	GENERAL TOLERANCES (UNLESS SPECIFIED) <table border="1"> <tr><th colspan="2">mm</th><th>INCH</th></tr> <tr><td>4 PLACES ±</td><td>---</td><td>±---</td></tr> <tr><td>3 PLACES ±</td><td>---</td><td>±---</td></tr> <tr><td>2 PLACES ±</td><td>0.1</td><td>±---</td></tr> <tr><td>1 PLACE ±</td><td>0.2</td><td>±---</td></tr> </table>	mm		INCH	4 PLACES ±	---	±---	3 PLACES ±	---	±---	2 PLACES ±	0.1	±---	1 PLACE ±	0.2	±---	DIMENSION STYLE MM ONLY DRAWN BY: DSHEA DATE: 2011/06/03 CHECKED BY: DMAHER DATE: 2011/06/08 APPROVED BY: EFOLAN DATE: 2011/06/22	SCALE 1.5:1 DESIGN UNITS METRIC 	TITLE S54 SERIES INTERNAL THREAD TYPE B INDUSTRIAL MOLEX INCORPORATED MATERIAL NO. SD-121064-008 DOCUMENT NO.	SHEET NO. 2 OF 2
	mm		INCH																		
4 PLACES ±	---	±---																			
3 PLACES ±	---	±---																			
2 PLACES ±	0.1	±---																			
1 PLACE ±	0.2	±---																			
DRAFT WHERE APPLICABLE MUST REMAIN WITHIN DIMENSIONS		SEE TABLE SIZE A 2		THIS DRAWING CONTAINS INFORMATION THAT IS PROPRIETARY TO MOLEX INCORPORATED AND SHOULD NOT BE USED WITHOUT WRITTEN PERMISSION																	