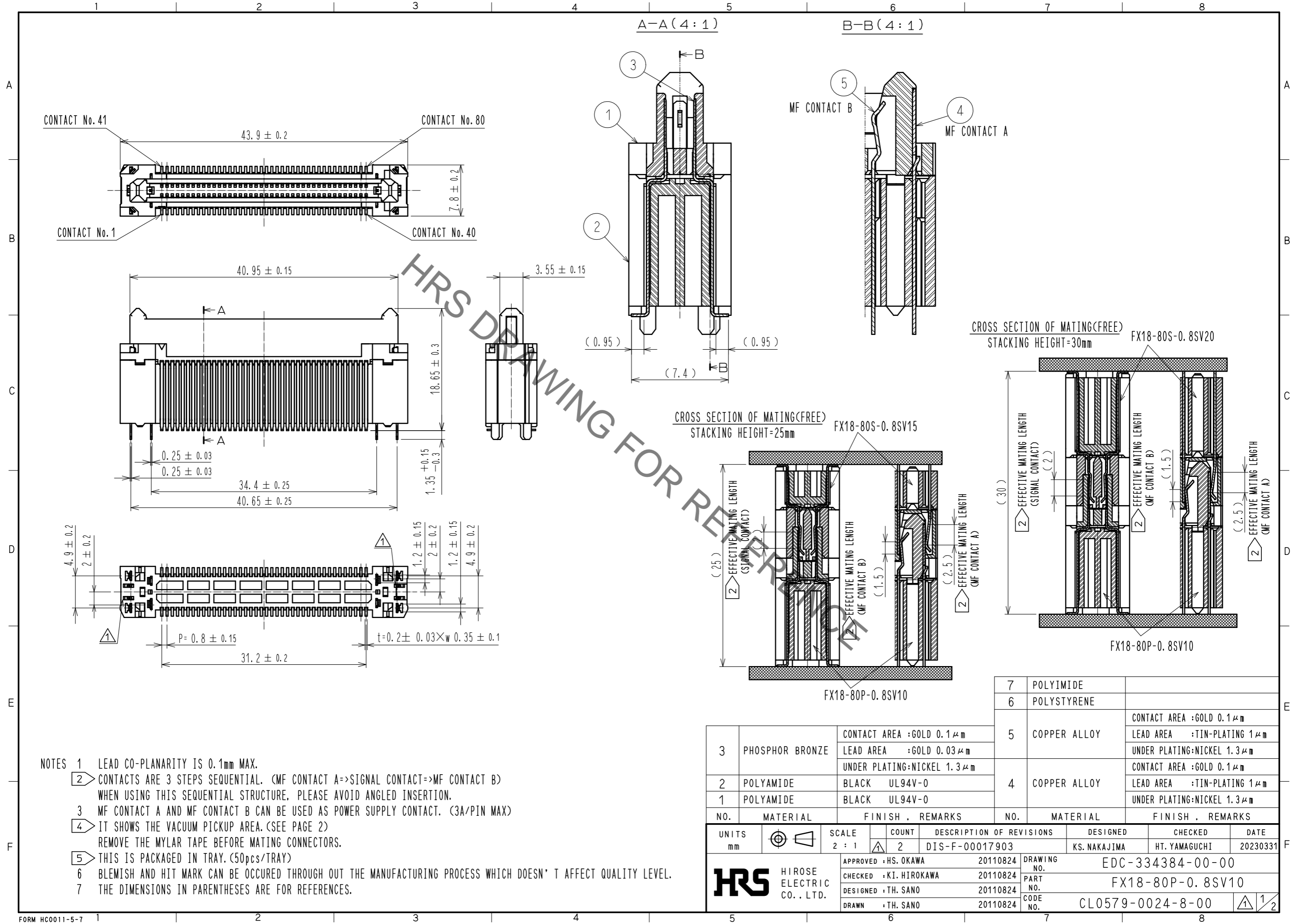


May.1.2023 Copyright 2023 HIROSE ELECTRIC CO., LTD. All Rights Reserved.
In case of consideration for using Automotive equipment / device which demand high reliability, kindly contact our sales window correspondents.



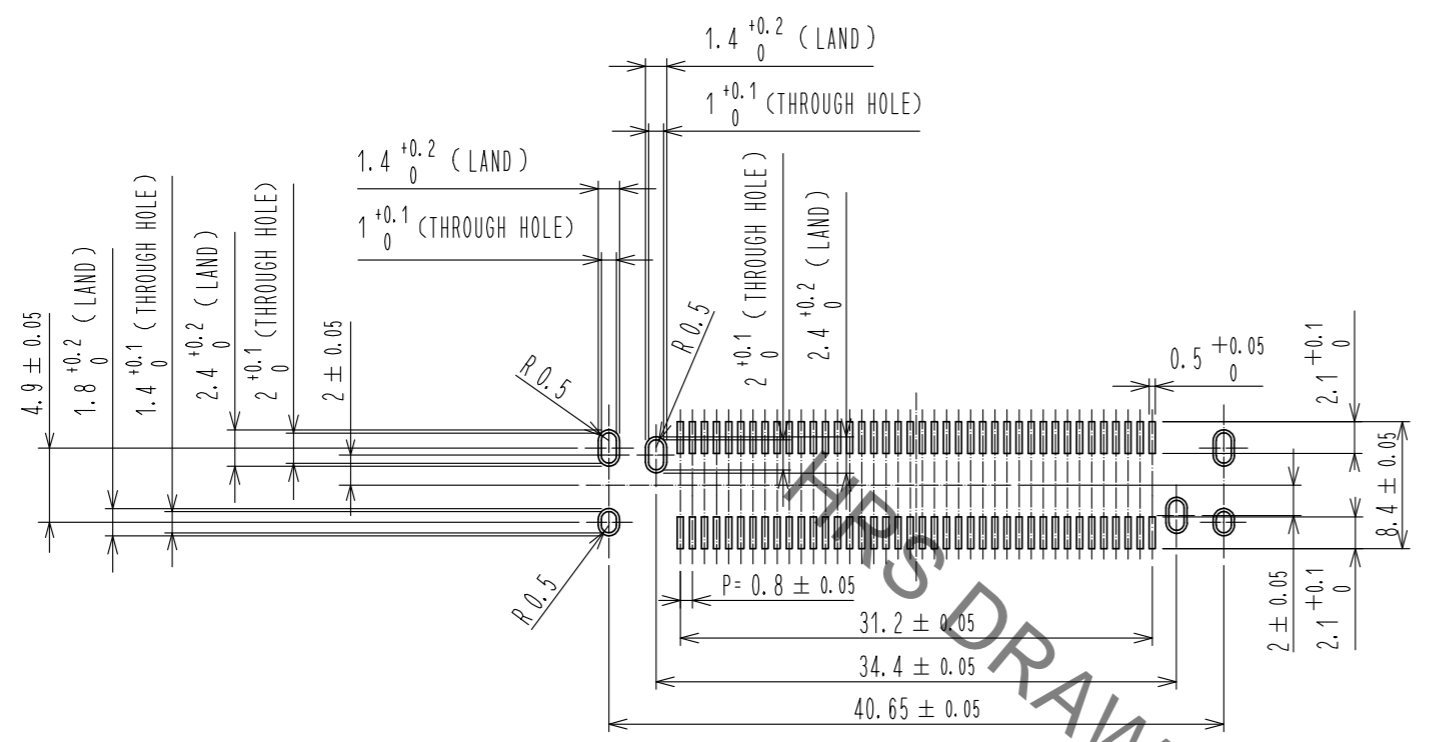
- NOTES
- 1 LEAD CO-PLANARITY IS 0.1mm MAX.
 - 2 CONTACTS ARE 3 STEPS SEQUENTIAL. (MF CONTACT A=>SIGNAL CONTACT=>MF CONTACT B) WHEN USING THIS SEQUENTIAL STRUCTURE, PLEASE AVOID ANGLED INSERTION.
 - 3 MF CONTACT A AND MF CONTACT B CAN BE USED AS POWER SUPPLY CONTACT. (3A/PIN MAX)
 - 4 IT SHOWS THE VACUUM PICKUP AREA. (SEE PAGE 2)
REMOVE THE MYLAR TAPE BEFORE MATING CONNECTORS.
 - 5 THIS IS PACKAGED IN TRAY. (50pcs/TRAY)
 - 6 BLEMISH AND HIT MARK CAN BE OCCURED THROUGH OUT THE MANUFACTURING PROCESS WHICH DOESN' T AFFECT QUALITY LEVEL.
 - 7 THE DIMENSIONS IN PARENTHESES ARE FOR REFERENCES.

| | | | | | |
|-----|-----------------|--|-----|--------------|--|
| 3 | PHOSPHOR BRONZE | CONTACT AREA :GOLD 0.1μm LEAD AREA :GOLD 0.03μm UNDER PLATING:NICKEL 1.3μm | 7 | POLYIMIDE | |
| 2 | POLYAMIDE | BLACK UL94V-0 | 6 | POLYSTYRENE | |
| 1 | POLYAMIDE | BLACK UL94V-0 | 5 | COPPER ALLOY | CONTACT AREA :GOLD 0.1μm LEAD AREA :TIN-PLATING 1μm UNDER PLATING:NICKEL 1.3μm |
| NO. | MATERIAL | FINISH . REMARKS | 4 | | COPPER ALLOY |
| NO. | MATERIAL | FINISH . REMARKS | NO. | MATERIAL | |

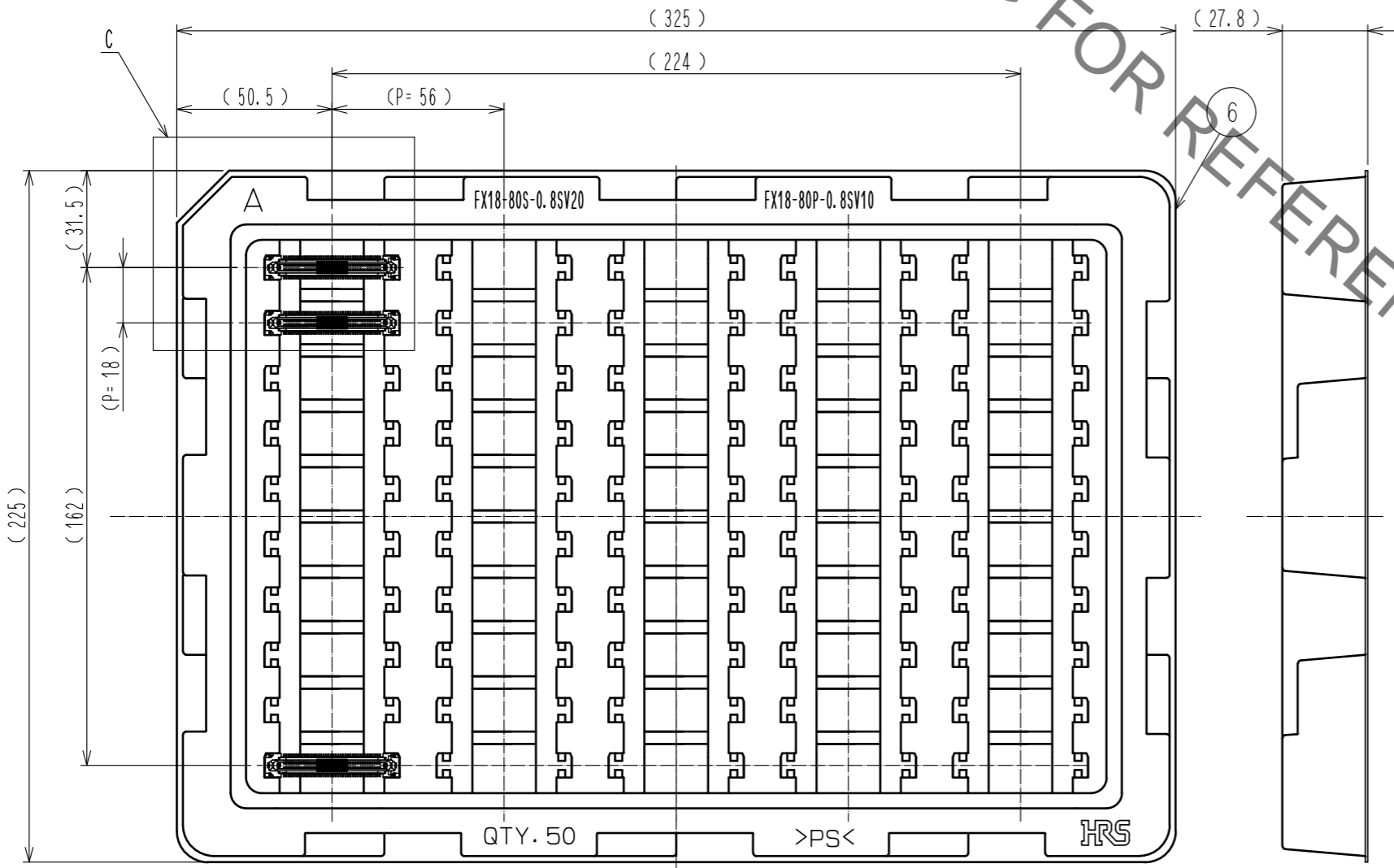
| | | | | | | | | | |
|------------------------|----|----------|-------|-------------|---|--------------------------|--------------|---------------|----------|
| UNITS | mm | SCALE | 2 : 1 | COUNT | 2 | DESCRIPTION OF REVISIONS | DESIGNED | CHECKED | DATE |
| | | | | | | DIS-F-00017903 | KS. NAKAJIMA | HT. YAMAGUCHI | 20230331 |
| APPROVED : HS. OKAWA | | 20110824 | | DRAWING NO. | | EDC-334384-00-00 | | | |
| CHECKED : KI. HIROKAWA | | 20110824 | | PART NO. | | FX18-80P-0.8SV10 | | | |
| DESIGNED : TH. SANO | | 20110824 | | CODE NO. | | CL0579-0024-8-00 | | | |
| DRAWN : TH. SANO | | 20110824 | | | | | | | |

May.1.2023 Copyright 2023 HIROSE ELECTRIC CO., LTD. All Rights Reserved.
In case of consideration for using Automotive equipment / device which demand high reliability, kindly contact our sales window correspondents.

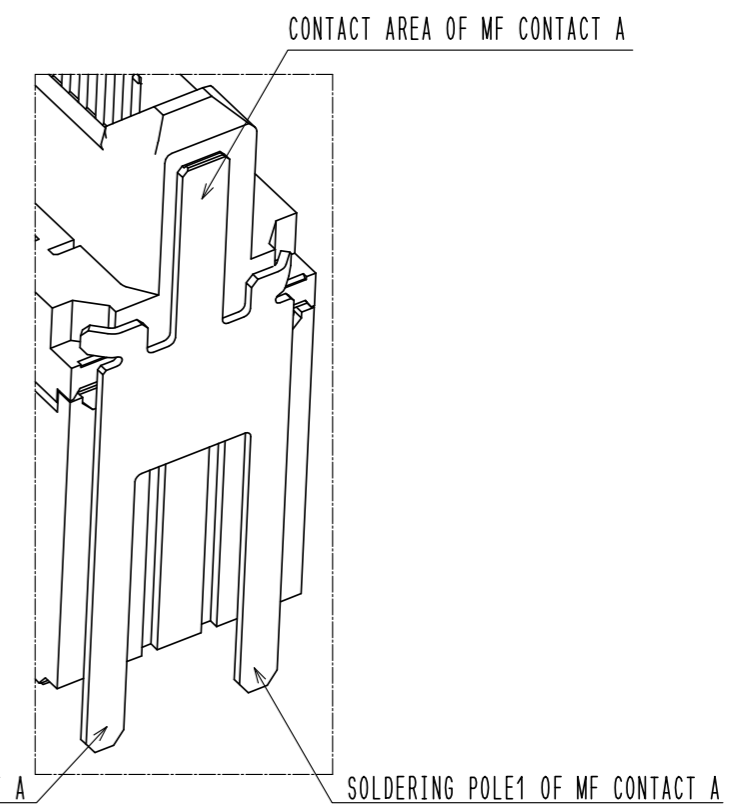
RECOMMENDED LAND PATTERN DIMENSION OF PCB(2:1)
(PCB THICKNESS:t=1.6mm METAL MASK THICKNESS:t=0.12mm)



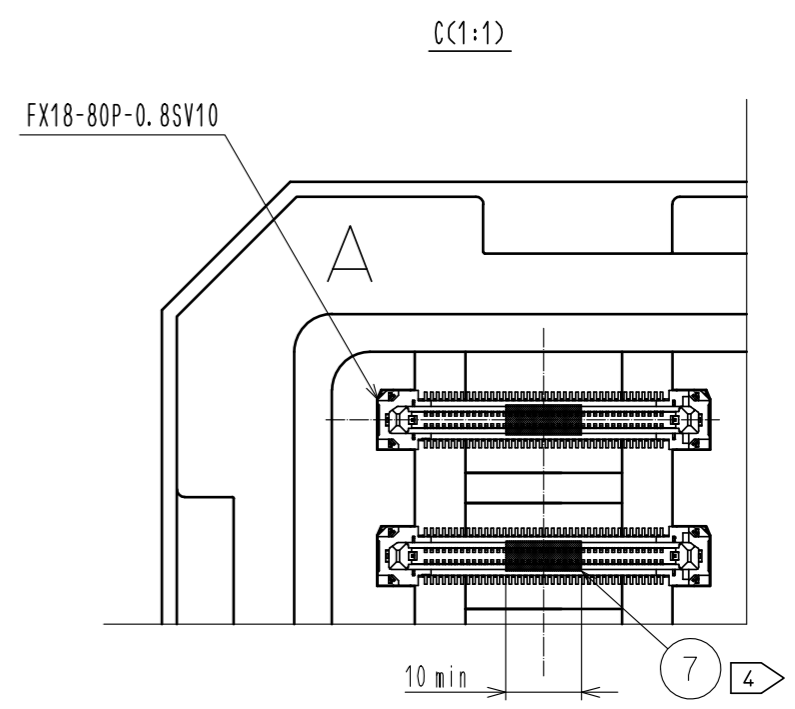
5 DRAWING FOR PACKING(1:2)



8 CONFIGURATION OF MF CONTACT A



NOTE 8 SOLDERING LEAD OF MF CONTACT A SPLITS INTO TWO POLES.
BE SURE TO CONNECT TO THE SAME CIRCUIT.



| | | |
|------------|-------------|------------------|
| HRS | DRAWING NO. | EDC-334384-00-00 |
| | PART NO. | FX18-80P-0.8SV10 |
| | CODE NO. | CL0579-0024-8-00 |
| | | 1/2 |