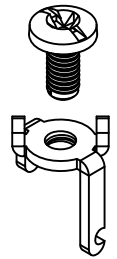
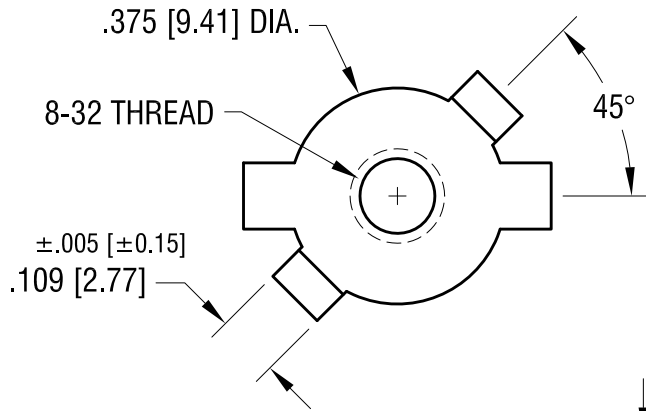
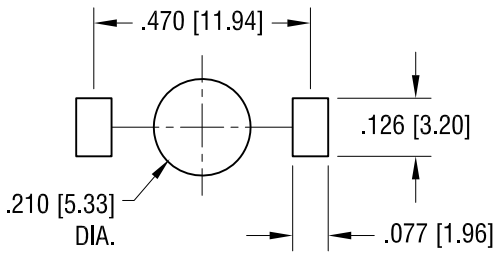
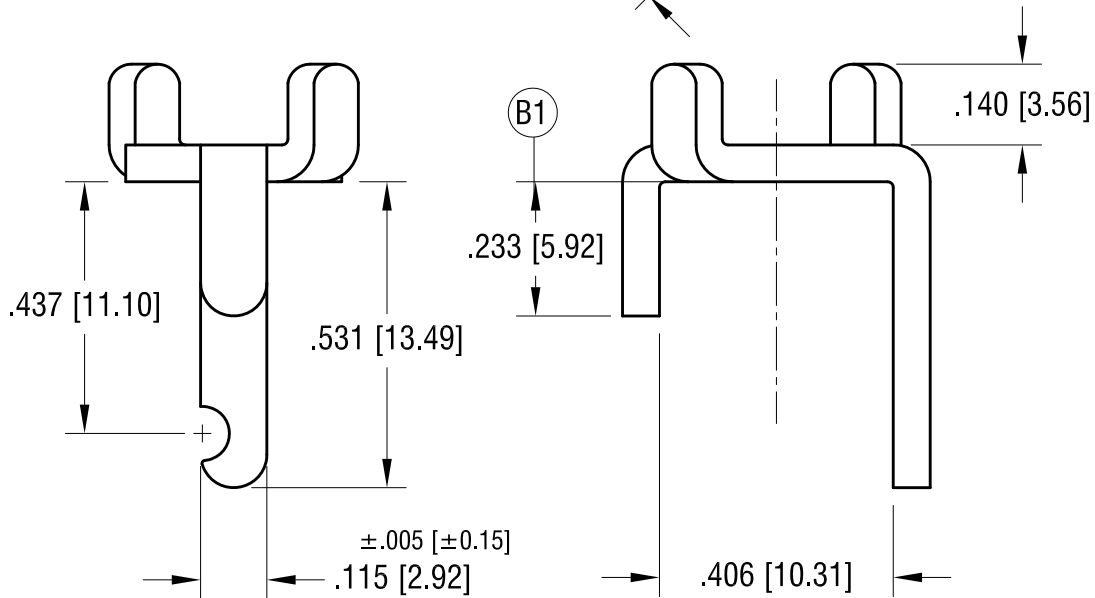


THIS DOCUMENT IS THE PROPERTY OF KEYSTONE ELECTRONICS CORP. AND SHALL NOT BE REPRODUCED, DISTRIBUTED OR USED AS A BASIS FOR MANUFACTURE WITHOUT PRIOR WRITTEN PERMISSION FROM KEYSTONE ELECTRONICS CORP.

MOUNTING DETAIL



ACTUAL SIZE



NOTE:

1. TERMINAL:
MAT'L - .064 [1.63] TH'K BRASS, MATTE TIN PLATE
2. SCREW : ONE (1) 8-32 x 3/8 L., SUPPLIED LOOSE.
MAT'L - BRASS, NICKEL PLATE

KEYSTONE ELECTRONICS CORP.

www.keyelco.com • NEW HYDE PARK NY 11040 • Tel (516)328-7500

PART NAME		SCREW TERMINAL	
MATERIAL		AS NOTED	
FINISH	AS NOTED	DRN BY	BOONE
		APP'D	RH
		DATE	7.01.99
		SCALE	3X
TOLERANCES	INCH [MM]	CODE	DWG NO.
DECIMAL	± .010 [± 0.25]	C	1207
ANGULAR	± 2°		
UNLESS OTHERWISE SPECIFIED			

4.12.23	(B1) WAS .297±.010 CHANGE AS PER ECN 23-052	C
7.15.09	CHANGE AS PER ECN 09-104	B
1.21.08	CHANGE AS PER ECR 08-052	A
DATE	DESCRIPTION	REV.