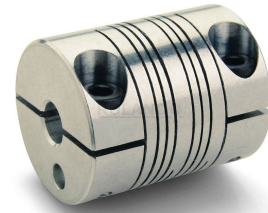




## MWC20-3/16"-4MM-A

Ruland MWC20-3/16"-4MM-A, 3/16" x 4mm Four Beam Coupling, Aluminum, Clamp Style, 0.787" (20.0mm) OD, 1.102" (28.0mm) Length



### Description

Ruland MWC20-3/16"-4MM-A is a clamp style four beam coupling with 0.1875" x 4mm bores, 0.787" (20.0mm) OD, and 1.102" (28.0mm) length. It is machined from a single piece of material and feature two sets of two spiral cuts. This gives it higher torque capacity, lower windup, and larger body sizes than single beam couplings. MWC20-3/16"-4MM-A is zero-backlash and has a balanced design for reduced vibration at high speeds of up to 6,000 RPM. MW-series couplings have purely metric outer diameter and length dimensions and fit in a smaller envelope than the P-series allowing for easier interchanges from single beam couplings. This four beam spiral coupling is zero-backlash and has a balanced design for reduced vibration at high speeds of up to 6,000 RPM. All hardware is metric and tests beyond DIN 912 12.9 standards for maximum torque capabilities. MWC20-3/16"-4MM-A is made from 7075 aluminum for lightweight and low inertia. It is machined from bar stock that is sourced exclusively from North American mills and RoHS3 and REACH compliant. MWC20-3/16"-4MM-A is manufactured in our Marlborough, MA factory under strict controls using proprietary processes.

### Product Specifications

<b>Bore (B1)</b>	0.1875 in	<b>Small Bore (B2)</b>	4 mm
<b>B1 Max Shaft Penetration</b>	0.535 in (13.6 mm)	<b>B2 Max Shaft Penetration</b>	0.535 in (13.6 mm)
<b>Outer Diameter (OD)</b>	0.787 in (20.0 mm)	<b>Bore Tolerance</b>	+0.001 in / -0.000 in (+0.025 mm / -0.000 mm)
<b>Length (L)</b>	1.102 in (28.0 mm)	<b>Recommended Shaft Tolerance</b>	+0.0000 / -0.0005 " (+0.000 / -0.013 mm)
<b>Cap Screw</b>	M3	<b>Screw Material</b>	Alloy Steel
<b>Hex Wrench Size</b>	2.5 mm	<b>Screw Finish</b>	Black Oxide
<b>Seating Torque</b>	2.1 Nm	<b>Number of Screws</b>	2 ea
<b>Dynamic Torque Reversing</b>	0.33 Nm	<b>Angular Misalignment</b>	3°
<b>Dynamic Torque Non-Reversing</b>	0.65 Nm	<b>Parallel Misalignment</b>	0.20 mm
<b>Static Torque</b>	1.30 Nm	<b>Axial Motion</b>	0.13 mm
<b>Torsional Stiffness</b>	2.01 Deg/Nm	<b>Moment of Inertia</b>	1.053x10 <sup>-6</sup> kg-m <sup>2</sup>
<b>Maximum Speed</b>	6,000 RPM	<b>Full Bearing Support Required?</b>	Yes
<b>Zero-Backlash?</b>	Yes	<b>Balanced Design</b>	Yes
<b>Torque Wrench</b>	<a href="#">TW:BT-1R-1/4-18.3</a>	<b>Recommended Hex Key</b>	<a href="#">Metric Hex Keys</a>
<b>Material Specification</b>	7075-T651 Extruded and Drawn Aluminum Bar	<b>Temperature</b>	-40°F to 225°F (-40°C to 107°C)
<b>Finish Specification</b>	Bright, No Plating	<b>Manufacturer</b>	Ruland Manufacturing
<b>Country of Origin</b>	USA	<b>Weight (lbs)</b>	0.044400
<b>UPC</b>	634529168363	<b>Tariff Code</b>	8483.60.8000
<b>UNSPC</b>	31163003		

- Note 1** Torque ratings are at maximum misalignment.
- Note 2** Performance ratings are for guidance only. The user must determine suitability for a particular application.
- Note 3** Torque ratings for the couplings are based on the physical limitations/failure point of the machined beams. Under normal/typical conditions the hubs are capable of holding up to the rated torque of the machined beams. In some cases, especially when the smallest standard bores are used or where shafts are undersized, slippage on the shaft is possible below the rated torque of the machined beams. Keyways are available to provide additional torque capacity in the shaft/hub connection when required. Please consult technical support for more assistance.

**Prop 65**  **WARNING** This product can expose you to the chemical Ethylene Thiourea, known to the State of

## Installation Instructions

1. Align the bores of the MWC20-3/16"-4MM-A four beam coupling on the shafts that are to be joined and determine if the misalignment parameters are within the limits of the coupling. (*Angular Misalignment: 3°*, *Parallel Misalignment: 0.20 mm*, *Axial Motion: 0.13 mm*)
  2. Fully tighten the M3 screw on one hub to the recommended seating torque of 2.1 Nm using a 2.5 mm hex torque wrench.
  3. Before tightening the screws on the second hub, rotate the coupling by hand to allow it to reach its free length.
  4. Tighten the screws on the second hub to the recommended seating torque. Make sure the coupling remains axially relaxed and the misalignment angle remains centered along the length of the coupling.
  5. The shafts may extend into the relieved portion of the bore as long as it does not exceed the shaft penetration length of 0.535 in (13.6 mm).
-