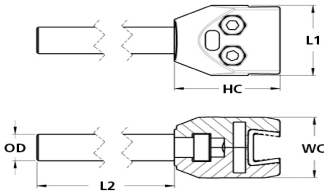




## MT16-CGRC-85S-PS

Conveyor Guide Clamp With Rod, Stainless Steel Rod, 17mm (0.67 in)  
Channel Width, 16mm Rod OD, 85mm Rod Length




### Description

Ruland MT12/12-CB2W-A is a two-way base connector with a 38mm base diameter, 12mm round thru holes, a 10mm square thru hole, M5 clamp screws, and an overall length of 25mm. The base is aluminum and the screws are 304 stainless steel. The two-way base connector is typically used as a base in support structures for mounting sensors, plexiglass guards, or other applications. It is designed for tubes that have the same thru hole size. The clamping force of the clamp onto the tube is achieved via the socket cap screws but you can choose to replace these with adjustable lever clamp kits that have the same screw size. It is RoHS3 and REACH compliant.

### Product Specifications

|                          |                       |                        |                     |
|--------------------------|-----------------------|------------------------|---------------------|
| <b>Channel Width</b>     | 17 mm (0.67 in)       | <b>Rod Diameter</b>    | 16 mm               |
| <b>Rod Length</b>        | 85 mm                 | <b>Clamp Length L1</b> | 31.5 mm             |
| <b>Clamp Width WC</b>    | 27 mm                 | <b>Clamp Height</b>    | 37 mm               |
| <b>Clamp Screw CL</b>    | M5                    | <b>Screw Material</b>  | 304 Stainless Steel |
| <b>Rod Material</b>      | 304 Stainless Steel   | <b>Weight (lbs)</b>    | 0.330700            |
| <b>Manufacturer</b>      | JW Winco/ Otto Ganter | <b>UPC</b>             | 634529314715        |
| <b>Country of Origin</b> | Spain                 | <b>Tariff Code</b>     | 7609.00.0000        |
| <b>UNSPC</b>             | 31162908              |                        |                     |

**Note 1** Performance ratings are for guidance only. The user must determine suitability for a particular application.

**Prop 65**  **WARNING** This product can expose you to the chemical Nickel (metallic), known to the State of California to cause cancer. For more information go to [www.P65Warnings.ca.gov](http://www.P65Warnings.ca.gov).