

## Han 100A axial module, male 10-25 mm<sup>2</sup>

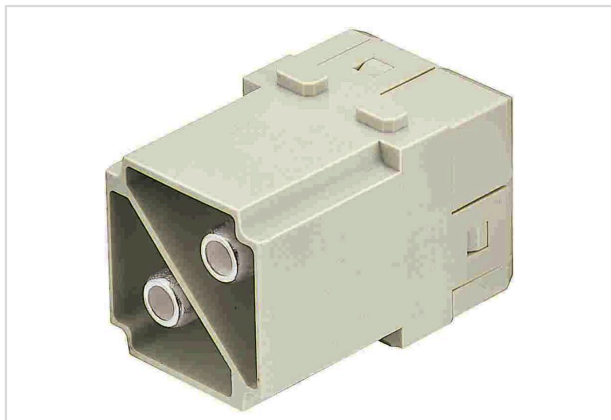


Image is for illustration purposes only. Please refer to product description.

|                    |   |
|--------------------|---|
| Part number        | 09 14 002 2653  |
| Specification      | Han 100A axial module, male 10-25 mm <sup>2</sup>                                     |
| HARTING eCatalogue | <a href="https://b2b.harting.com/09140022653">https://b2b.harting.com/09140022653</a> |

### Identification

|                    |                   |
|--------------------|-------------------|
| Category           | Modules           |
| Series             | Han-Modular®      |
| Type of module     | Han® 100 A module |
| Size of the module | Double module     |

### Version

|                    |                         |
|--------------------|-------------------------|
| Termination method | Axial screw termination |
| Gender             | Male                    |
| Number of contacts | 2                       |

### Technical characteristics

|                          |                           |
|--------------------------|---------------------------|
| Conductor cross-section  | 10 ... 25 mm <sup>2</sup> |
| Rated current            | 100 A                     |
| Rated voltage            | 1,000 V                   |
| Rated impulse voltage    | 8 kV                      |
| Pollution degree         | 3                         |
| Rated voltage acc. to UL | 600 V                     |
| Insulation resistance    | >10 <sup>10</sup> Ω       |
| Contact resistance       | ≤0.3 mΩ                   |
| Stripping length         | 12 ... 14 mm              |
| Tightening torque        | 6 ... 7 Nm                |
| Limiting temperature     | -40 ... +125 °C           |



**Pushing Performance**  
 Since 1945

## Technical characteristics

Mating cycles ≥500

## Material properties

|   |  |
|---|--|
| Material (insert)                         | Polycarbonate (PC)                                     |
| Colour (insert)                           | RAL 7032 (pebble grey)                                 |
| Material (contacts)                       | Copper alloy   |
| Surface (contacts)                        | Silver plated  |
| Material flammability class acc. to UL 94 | V-0  |
| RoHS                                      | compliant with exemption                               |
| RoHS exemptions                           | 6(c): Copper alloy containing up to 4 % lead by weight |
| ELV status                                | compliant with exemption                               |
| China RoHS                                | 50   |
| REACH Annex XVII substances               | Not contained  |
| REACH ANNEX XIV substances                | Not contained  |
| REACH SVHC substances                     | Yes  |
| REACH SVHC substances                     | Lead   |
| ECHA SCIP number                          | 5dbb3851-b94e-4e88-97a1-571845975242                   |
| California Proposition 65 substances      | Yes  |
| California Proposition 65 substances      | Lead<br>Nickel   |
| Fire protection on railway vehicles       | EN 45545-2 (2020-08)                                   |
| Requirement set with Hazard Levels        | R22 (HL 1-3)<br>R23 (HL 1-3)                           |

## Specifications and approvals

|                |  |
|----------------|--|
| Specifications | IEC 60664-1<br>IEC 61984   |
| Approvals      | DNV GL   |
| UL / CSA       | UL 1977 ECBT2.E235076<br>CSA-C22.2 No. 182.3 ECBT8.E235076<br>UL 2237 PVVA2.E318390<br>CSA-C22.2 No. 182.3 PVVA8.E318390 |

## Commercial data

|                |      |
|----------------|------|
| Packaging size | 1    |
| Net weight     | 67 g |



**Pushing Performance**  
Since 1945

## Commercial data

|                                |   |
|--------------------------------|---|
| Country of origin              | Germany   |
| European customs tariff number | 85366990  |
| GTIN                           | 5713140019690   |
| eCl@ss                         | 27440217 Module for industrial connectors (power/signals) |