

1

2

3

4

5

6


7

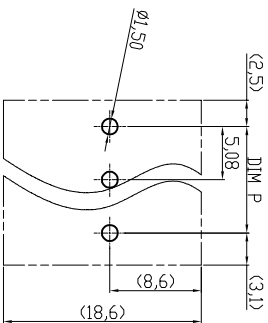
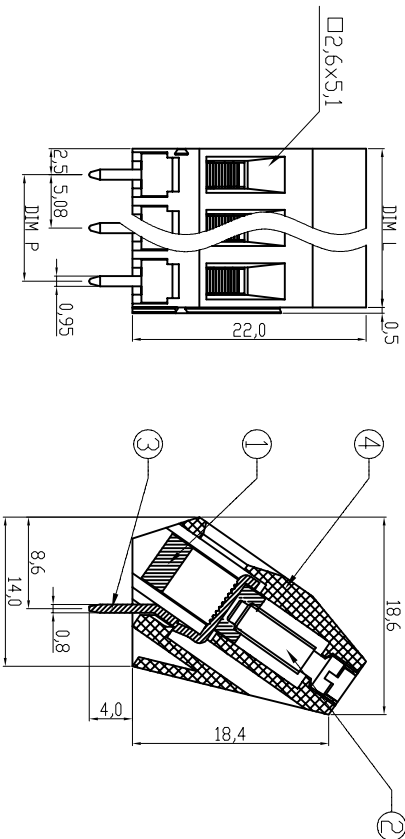
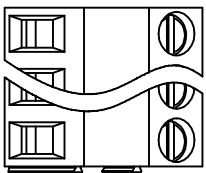
A

Material

- ① Clamp: Brass, Ni plated
- ② Terminal screw: Steel Zinc plating " " slot type
- ③ Wire guard solder pin: Tin plated
- ④ Terminal housing: Thermoplastic (UL94V-0) , GREY

Electrical

Voltage rating: 300VAC
 Current rating: 10A
 Wire range:
 Solid wire(AWG): 12-24
 Stranded wire(AWG): 12-24
 Torque(Lb-in): 3.5
 Screw: M3
 Wire strip length: 6-7mm
 Withstanding Voltage: 1.6kV
 Operating temperature: -40°C to +115°C
 Soldering temperature: 250°C±10°C/5 Sec
 Safety Approval: 



RECOMMENDER PCB LAYOUT

DIMENSION

L	Nx5.08
P	(N-1)x5.08

N=Number of poles

Poles	Tolerance	
	DIM L	DIM P
2p-6p	±0.15	±0.15
7p-12p	±0.20	±0.20
13p-18p	±0.25	±0.25
19p-24p	±0.30	±0.30

Customer-No.

Scale	1:1						
TOLERANCE							
X.	±0.50		Drawn	19.04.2010	Alex		
X.X	±0.30		Approved	19.04.2016	Winnie		
X.XX	±0.10						
DIM	TOL						
X.°	±1°						
Angle	TOL						

RoHS compliant



File No.: E349947

Drawing-No.

ASSMANN WSW-No.
A-TB508-TPXX

ASS 4104 CO

rev01



Replace

Sheet

1

2

3

4

5

6

7

H

G

F

E

D

C

B

A

B

C

D

E

F

G

H