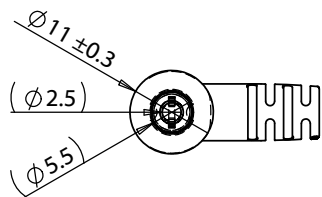
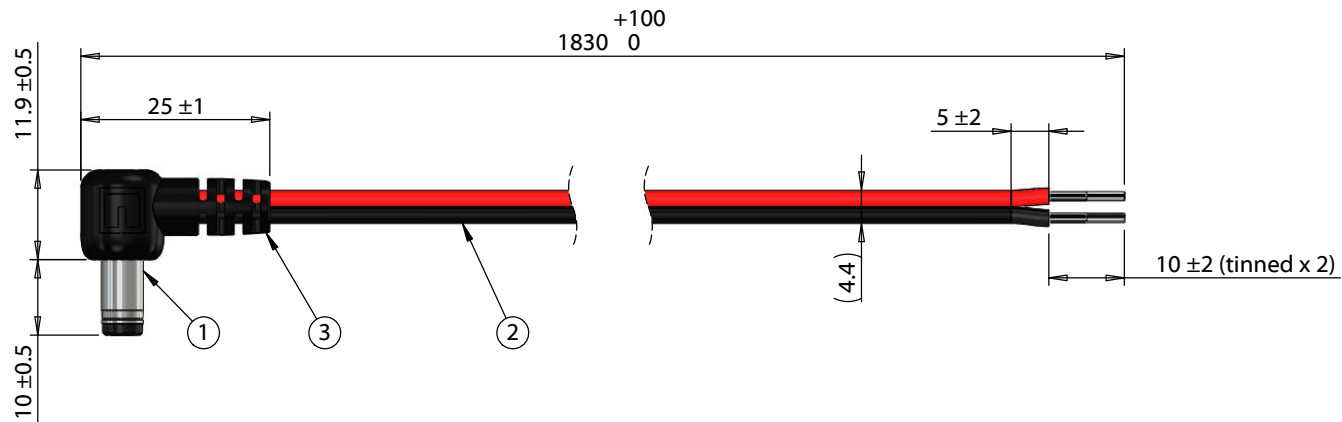


ITEM NO.	PART NUMBER	DESCRIPTION	QTY.	COMPONENT NOTES
1	50-00129	Connector, dc plug, 5.5x2.5xL18.5 mm, molding style, spring contacts	1	
2	30-00415	Wire, 2C TS, 18 AWG, UL2468, 300V, 80°C, 4.4 mm, VW-1, PVC, red and black	1	
3	24-00006	Overmold, PVC, black	1	PVC, black



**Notes:**

Cables individually tied and bundled in groups of 10

Functionally equivalent components may be substituted

Cable rated for 48 V, 7 A

Wiring Diagram	
50-00129	wire color
center	red
sleeve	black

Revision:	Date:	Description:	Prepared:	Notes: RoHS compliant	<h1>TENSILITY</h1> <p>tel 1.541.323.3228 800 877.670.7118 fax 1.541.323.4202 web tensility.com</p>
A	7/25/2014	Initial release	Verified:		
A1	5/7/2015	Updated notes section	Dimensions are in millimeters. Tolerances: X: ± 0.5 mm X.X: ± 0.3 mm X.XX: ± 0.05 mm	Description:	Size: A
				Cable, 1830 mm, 5.5x2.5x10 mm 90° 50-00129 dc plug to 10 mm tinned, 18 AWG, 30-00415 R-B wire	Part number: 10-01779
					Scale: 1:1

5

↑

4

3

2

1



Sheet 1 of 1