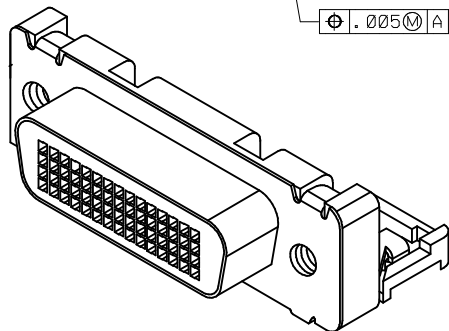
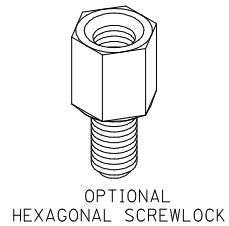
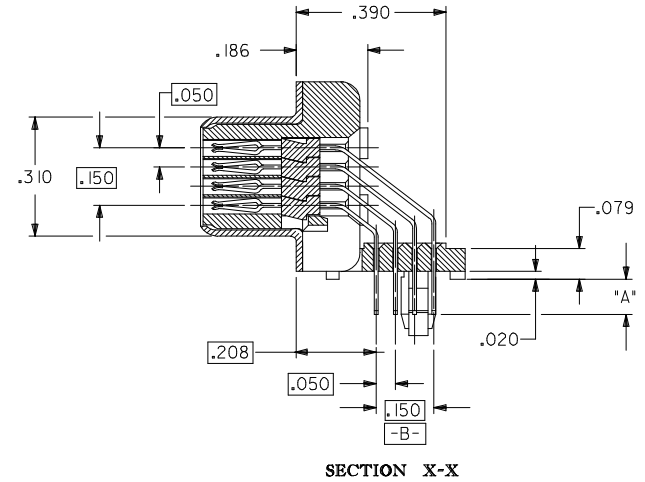
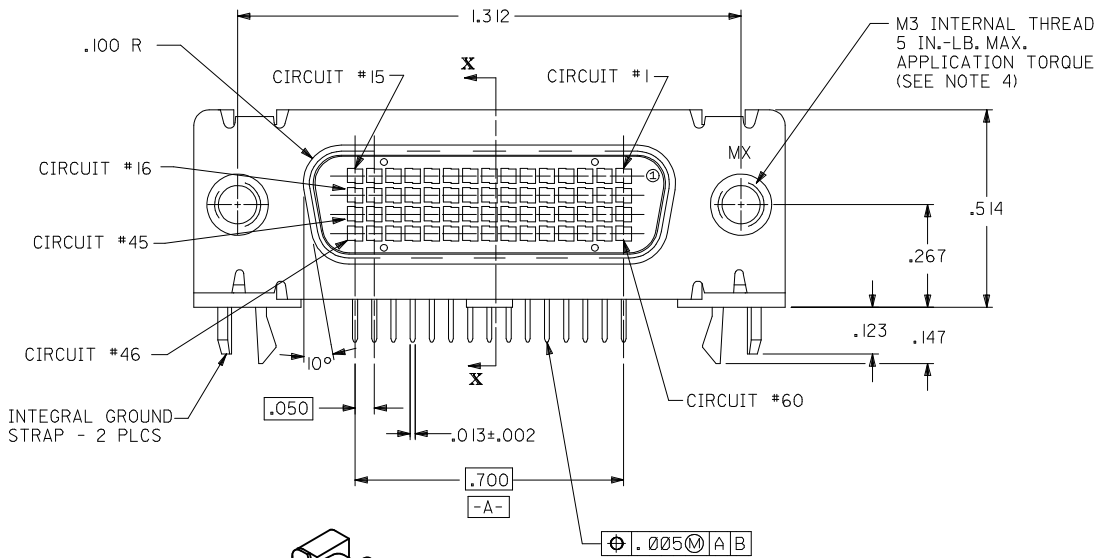
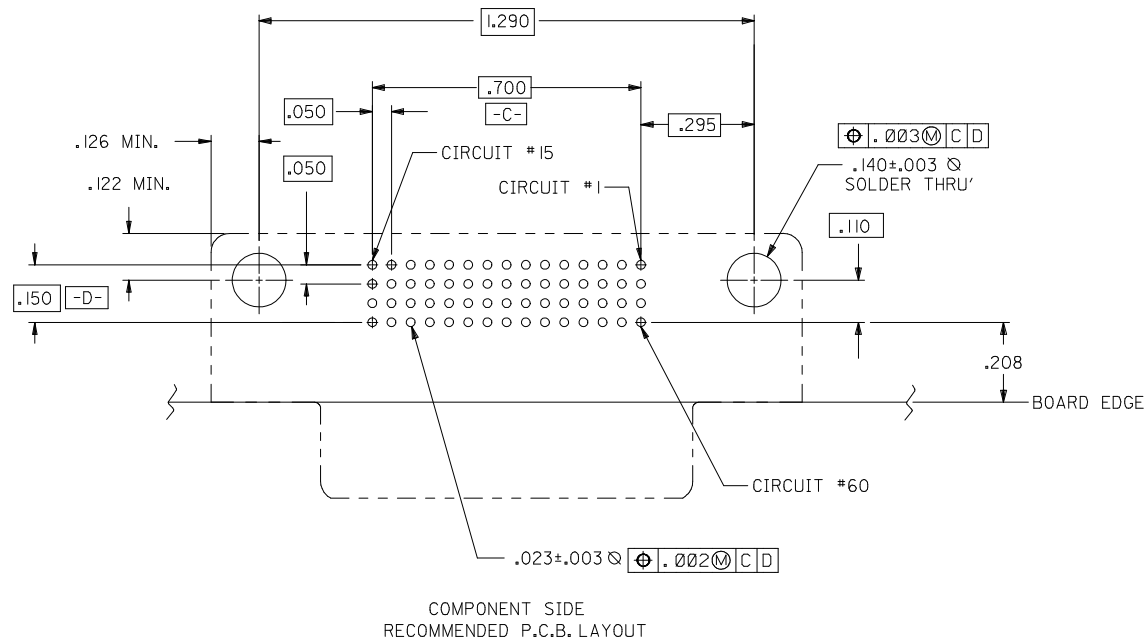


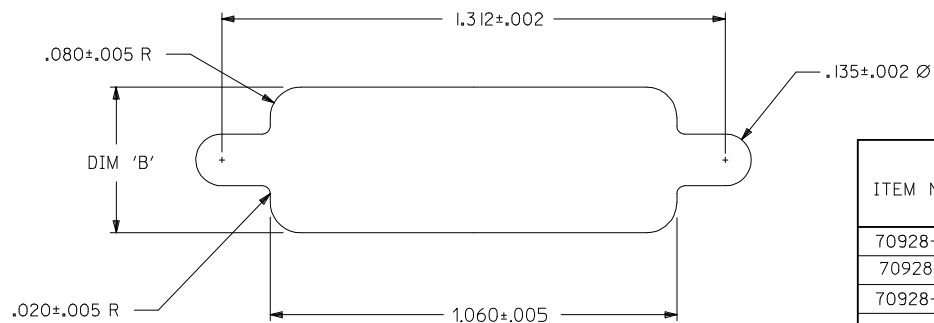
- NOTES:
- 1) MATERIALS:
 HOUSING AND MOLDED STICK: GLASS FILLED POLYMER, 94V-0, COLOR BLACK.
 TERMINALS: COPPER ALLOY .010±.0005 THK.
 OUTER SHELL: DEEP DRAWN STEEL, .016/(0.40) THICK.
 HEXAGONAL SCREWLOCK: STEEL.
 - 2) PLATING :
TERMINALS (SEE CHART TO DETERMINE WHICH PART NUMBER HAS WHICH PLATING):
30 GOLD SELECTIVE GOLD (Au) IN THE CONTACT AREA:
 THICKNESS=30 MICROINCHES/(0.76 MICROMETERS) MINIMUM;
 SELECTIVE TIN (Sn) ALLOY IN THE PC TAIL AREA:
 THICKNESS=100 MICROINCHES/(2.54 MICROMETERS) MINIMUM;
 NICKEL (Ni) UNDERPLATE OVER ENTIRE PIN.
GOLD FLASH SELECTIVE GOLD (Au) FLASH IN THE CONTACT AREA
 SELECTIVE TIN (Sn) ALLOY IN THE PC TAIL AREA:
 THICKNESS=100 MICROINCHES/(2.54 MICROMETERS) MINIMUM;
 NICKEL (Ni) UNDERPLATE OVER ENTIRE PIN.
OUTER SHELL: 150 MICROINCHES/(3.81 MICROMETERS) MINIMUM OF TIN (Sn)
 OVER 50 MICROINCHES/(1.27 MICROMETERS) MINIMUM OF
 NICKEL (Ni) OVERALL.
 - 3) CONFORMS TO PRODUCT SPECIFICATION PS-70928.
 - 4) THREAD GAGE MAY REQUIRE UP TO 1 IN.-LB. OF TORQUE DURING GAGING PROCESS.
 - 5) PART COMPLIES WITH CLASS B OF COSMETIC SPECIFICATION PS-45499-002



MOD PANEL CUT-OUT EC NO: UCP2012-0335 DRWING:MORGAN 2011/08/12 CHKD:MPOFF 2014/04/11 APPR:SMILLER 2014/05/12	QUALITY SYMBOLS ▽=0 ▽=0 ▽=0	GENERAL TOLERANCES (UNLESS SPECIFIED)		DIMENSION STYLE INCH ONLY		SCALE 4:1	DESIGN UNITS INCH	THIRD ANGLE PROJECTION	
		mm INCH	DRAWN BY RKADAMS	DATE 2004/07/26	TITLE SALES ASSEMBLY 60 CKT LFH ASSEMBLY RIGHT ANGLE RECEPTACLE				
REV □	DESCRIPTION MOD PANEL CUT-OUT	4 PLACES ± --- ± ---	3 PLACES ± --- ± .010	2 PLACES ± --- ± ---	1 PLACE ± --- ± ---	0 PLACE ± --- ± ---	MATERIAL NO. SEE TABLE		DOCUMENT NO. SD-70928-001
		DRAFT WHERE APPLICABLE MUST REMAIN WITHIN DIMENSIONS		ANGULAR ±1/2°	THIS DRAWING CONTAINS INFORMATION THAT IS PROPRIETARY TO MOLEX INCORPORATED AND SHOULD NOT BE USED WITHOUT WRITTEN PERMISSION		SHEET NO. 1 OF 2		



COMPONENT SIDE
RECOMMENDED P.C.B. LAYOUT

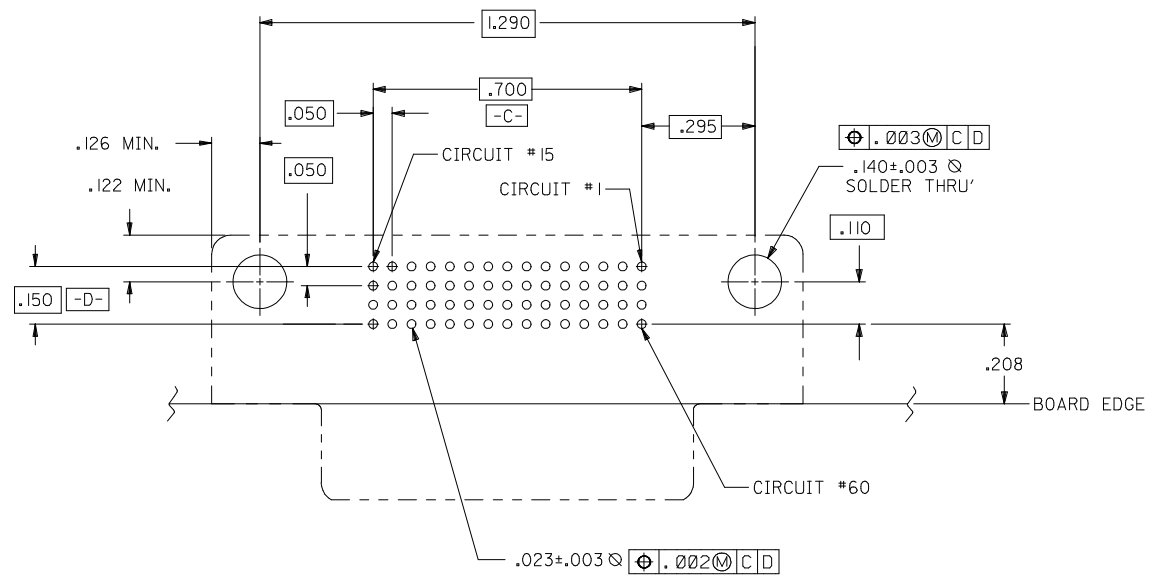


RECOMMENDED PANEL CUT-OUT

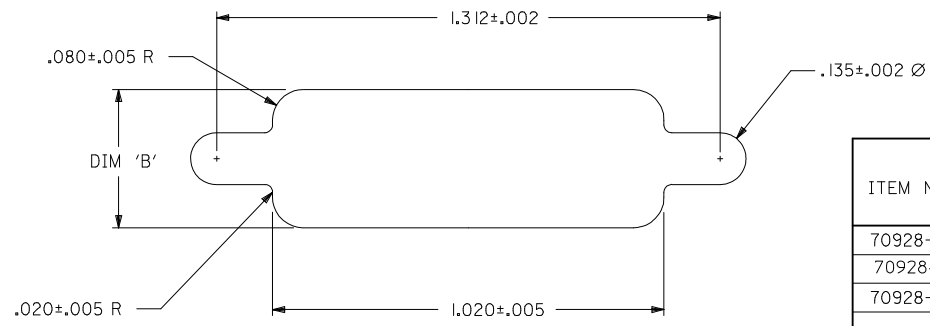
DIM. 'B'	PANEL THICKNESS
.400±.005	.039
.420±.005	.064

ITEM NUMBER	DIMENSION 'A'	PLATING (SEE NOTE 2)	HEXAGONAL SCREWLOCKS PACKAGED WITH CONNECTORS	SCREWLOCK ITEM NUMBER (SEE SD-70982-****)	PACKAGED PER PACKAGING SPECIFICATION
70928-2020	.079±.010	30 GOLD	NO	_____	PK-70873-0291
70928-2021	.092±.010	30 GOLD	NO	_____	PK-70873-0291
70928-2022	.104±.010	30 GOLD	NO	_____	PK-70873-0291
	.079±.010	30 GOLD	YES	70982-1003; 4-40 INTERNAL THD	PK-70873-0686
70928-2025	.079±.010	30 GOLD	YES	70982-1004; M-3 INTERNAL THD	PK-70873-0686
70928-2027	.125±.010	30 GOLD	NO	_____	PK-70873-0291
	.092±.010	30 GOLD	YES	70982-1003; 4-40 INTERNAL THD	PK-70873-0686
	.092±.010	GOLD FLASH	NO	_____	PK-70873-0291
	.092±.010	GOLD FLASH	YES	70982-1003; 4-40 INTERNAL THD	PK-70873-0686

SEE SHEET 1 EC NO: UCP2012-0335 DRW:DMORGAN 2011/08/12 CHK:DMPOFF 2014/04/11 APPR:SMILLER 2014/05/12 REV:	QUALITY SYMBOLS ▽=0 ▽=0 ▽=0	GENERAL TOLERANCES (UNLESS SPECIFIED) <table border="1"> <thead> <tr> <th></th> <th>mm</th> <th>INCH</th> </tr> </thead> <tbody> <tr> <td>4 PLACES</td> <td>± .---</td> <td>± .---</td> </tr> <tr> <td>3 PLACES</td> <td>± .---</td> <td>± .010</td> </tr> <tr> <td>2 PLACES</td> <td>± .---</td> <td>± .---</td> </tr> <tr> <td>1 PLACE</td> <td>± .---</td> <td>± .---</td> </tr> <tr> <td>0 PLACE</td> <td>± .---</td> <td>± .---</td> </tr> </tbody> </table>		mm	INCH	4 PLACES	± .---	± .---	3 PLACES	± .---	± .010	2 PLACES	± .---	± .---	1 PLACE	± .---	± .---	0 PLACE	± .---	± .---	DIMENSION STYLE INCH ONLY DRAWN BY: RKADAMS CHECKED BY: BBARKER APPROVED BY: SMILLER DATE: 2004/07/26 DATE: 2004/07/26 DATE: 2004/07/26	SCALE: 4:1 DESIGN UNITS: INCH THIRD ANGLE PROJECTION	TITLE: SALES ASSEMBLY 60 CKT LFH ASSEMBLY RIGHT ANGLE RECEPTACLE molex
		mm	INCH																				
	4 PLACES	± .---	± .---																				
	3 PLACES	± .---	± .010																				
	2 PLACES	± .---	± .---																				
1 PLACE	± .---	± .---																					
0 PLACE	± .---	± .---																					
	ANGULAR ±1/2° DRAFT WHERE APPLICABLE MUST REMAIN WITHIN DIMENSIONS	MATERIAL NO. SEE TABLE	DOCUMENT NO. SD-70928-001	SHEET NO. 2 OF 2																			
		SIZE: C THIS DRAWING CONTAINS INFORMATION THAT IS PROPRIETARY TO MOLEX INCORPORATED AND SHOULD NOT BE USED WITHOUT WRITTEN PERMISSION																					



COMPONENT SIDE
RECOMMENDED P.C.B. LAYOUT

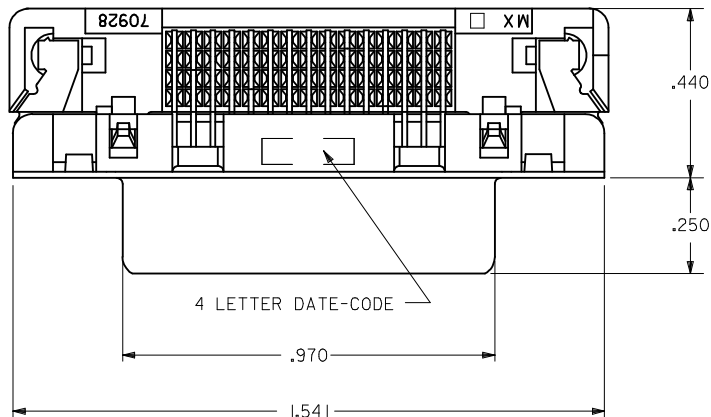


RECOMMENDED PANEL CUT-OUT

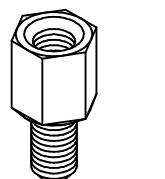
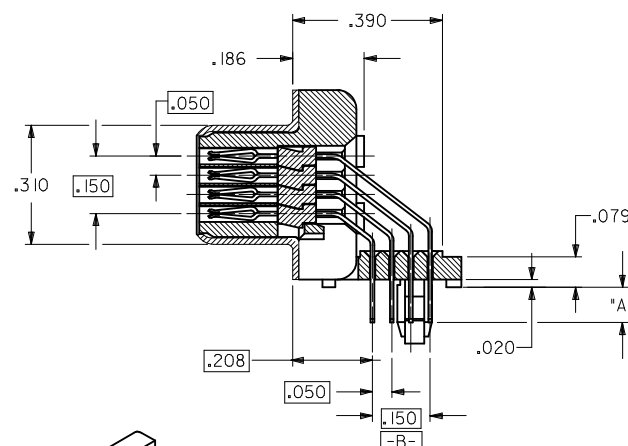
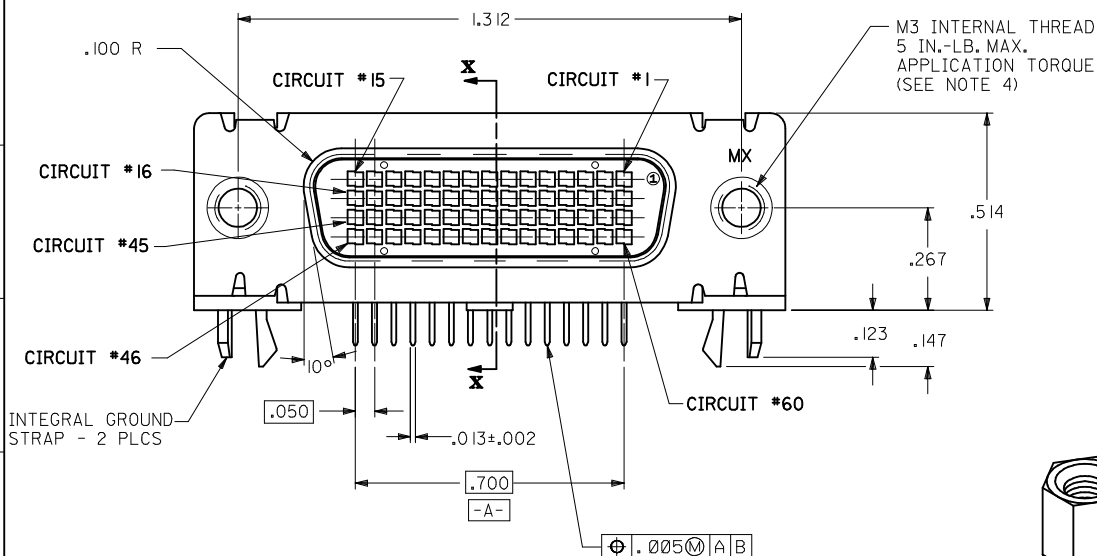
DIM. 'B'	PANEL THICKNESS
.380±.005	.039
.420±.005	.064

ITEM NUMBER	DIMENSION "A"	PLATING (SEE NOTE 2)	HEXAGONAL SCREWLOCKS PACKAGED WITH CONNECTORS	SCREWLOCK ITEM NUMBER (SEE SD-70982-****)	PACKAGED PER PACKAGING SPECIFICATION
70928-2020	.079±.010	30 GOLD	NO	_____	PK-70873-0291
70928-2021	.092±.010	30 GOLD	NO	_____	PK-70873-0291
70928-2022	.104±.010	30 GOLD	NO	_____	PK-70873-0291
	.079±.010	30 GOLD	YES	70982-1003; 4-40 INTERNAL THD	PK-70873-0686
	.079±.010	30 GOLD	YES	70982-1004; M-3 INTERNAL THD	PK-70873-0686
70928-2027	.125±.010	30 GOLD	NO	_____	PK-70873-0291
	.092±.010	30 GOLD	YES	70982-1003; 4-40 INTERNAL THD	PK-70873-0686
	.092±.010	GOLD FLASH	NO	_____	PK-70873-0291
	.092±.010	GOLD FLASH	YES	70982-1003; 4-40 INTERNAL THD	PK-70873-0686

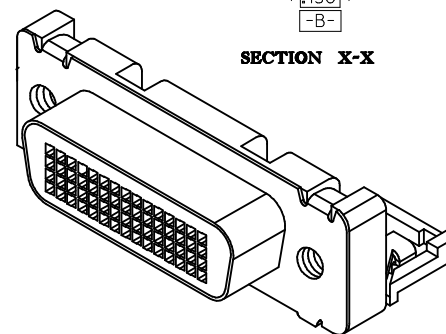
ADD 70928-2021 EC NO: UCP2005-1614 DRWNSMART 2005/04/26 CHKD:BBARKER 2005/05/05 APPR:SMILLER 2005/06/17	QUALITY SYMBOLS ▽=0 ▽=0	GENERAL TOLERANCES (UNLESS SPECIFIED) <table border="1"> <tr> <th></th> <th>mm</th> <th>INCH</th> </tr> <tr> <td>4 PLACES ±</td> <td>---</td> <td>---</td> </tr> <tr> <td>3 PLACES ±</td> <td>---</td> <td>±.010</td> </tr> <tr> <td>2 PLACES ±</td> <td>---</td> <td>---</td> </tr> <tr> <td>1 PLACE ±</td> <td>---</td> <td>---</td> </tr> </table>		mm	INCH	4 PLACES ±	---	---	3 PLACES ±	---	±.010	2 PLACES ±	---	---	1 PLACE ±	---	---	DIMENSION STYLE INCH ONLY DRAWN BY: RKADAMS DATE: 07/26/2004 CHECKED BY: BBARKER DATE: 07/26/2004 APPROVED BY: SMILLER DATE: 07/26/2004	SCALE: 4:1 DESIGN UNITS: INCH THIRD ANGLE PROJECTION	TITLE: SALES ASSEMBLY 60CKT LFH ASSEMBLY MODEL - R/A RECEPTACLE
		mm	INCH																	
	4 PLACES ±	---	---																	
	3 PLACES ±	---	±.010																	
2 PLACES ±	---	---																		
1 PLACE ±	---	---																		
MATERIAL NO. SEE TABLE	DOCUMENT NO. SD-70928-001	SHEET NO. 2 OF 2																		
DRAFT WHERE APPLICABLE MUST REMAIN WITHIN DIMENSIONS			THIS DRAWING CONTAINS INFORMATION THAT IS PROPRIETARY TO MOLEX INCORPORATED AND SHOULD NOT BE USED WITHOUT WRITTEN PERMISSION																	



ITEM NUMBER	DIMENSION "A"	PLATING (SEE NOTE 2)	HEXAGONAL SCREWLOCKS PACKAGED WITH CONNECTORS	SCREWLOCK ITEM NUMBER (SEE SD-70982-****)	PACKAGING PER PACKAGING SPECIFICATION
70928-2000	.079±.010	30 GOLD	NO	_____	PK-70873-0291
70928-2001	.092±.010	30 GOLD	NO	_____	PK-70873-0291
70928-2002	.104±.010	30 GOLD	NO	_____	PK-70873-0291
70928-2003	.079±.010	30 GOLD	YES	70982-1003; 4-40 INTERNAL THD	PK-70873-0686
70928-2005	.079±.010	30 GOLD	YES	70982-1004; M-3 INTERNAL THD	PK-70873-0686
70928-2007	.125±.010	30 GOLD	NO	_____	PK-70873-0291
70928-2008	.092±.010	30 GOLD	YES	70982-1003; 4-40 INTERNAL THD	PK-70873-0686
70928-2009	.092±.010	GOLD FLASH	NO	_____	PK-70873-0291
70928-2010	.092±.010	GOLD FLASH	YES	70982-1003; 4-40 INTERNAL THD	PK-70873-0686



OPTIONAL HEXAGONAL SCREWLOCK

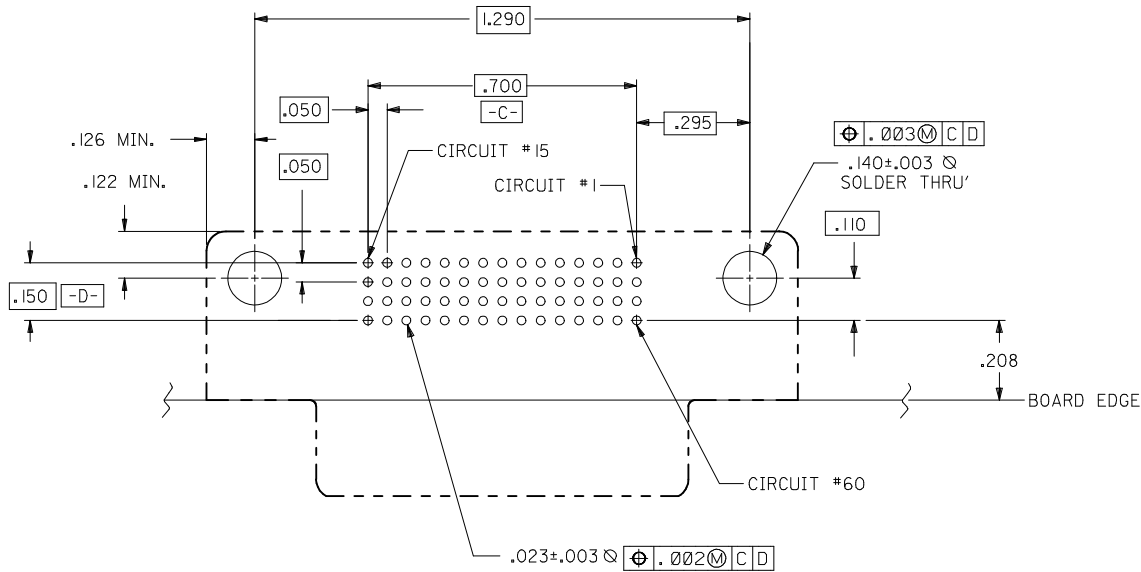


SECTION X-X

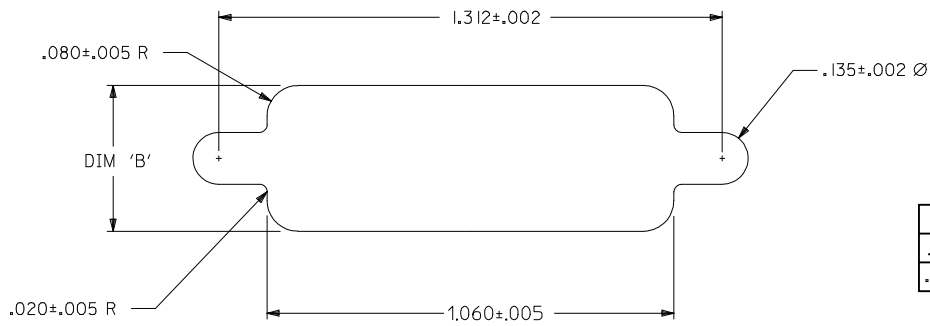
NOTES:

- MATERIALS:
HOUSING AND MOLDED STICK: GLASS FILLED POLYMER, 94V-0, COLOR BLACK.
TERMINALS: COPPER ALLOY .010±.0005 THICK.
OUTER SHELL: DEEP DRAWN STEEL, .016(0.40) THICK.
HEXAGONAL SCREWLOCK: STEEL.
- PLATING:
TERMINALS (SEE CHART TO DETERMINE WHICH PART NUMBER HAS WHICH PLATING):
30 GOLD -- 30 MICRONS(0.76 MICROMETERS) MINIMUM SELECTIVE GOLD (Au) IN THE CONTACT AREA;
100 MICRONS(2.54 MICROMETERS) MINIMUM SELECTIVE TIN (Sn) IN PC TAIL AREA;
OVER NICKEL (Ni) UNDERPLATE OVERALL.
GOLD FLASH -- SELECTIVE GOLD (Au) FLASH IN THE CONTACT AREA;
100 MICRONS(2.54 MICROMETERS) MINIMUM SELECTIVE TIN (Sn) IN PC TAIL AREA;
OVER NICKEL (Ni) UNDERPLATE OVERALL.
OUTERSHELL: 150 MICRONS(3.81 MICROMETERS) MINIMUM TIN (Sn) OVER 50 MICRONS(1.27 MICROMETERS) MINIMUM NICKEL (Ni) OVERALL.
- CONFORMS TO PRODUCT SPECIFICATION PS-70928.
- THREAD GAGE MAY REQUIRE UP TO 1 IN.-LB. OF TORQUE DURING GAGING PROCESS.
- PART COMPLIES WITH CLASS B OF COSMETIC SPECIFICATION PS-45499-002

MOD PANEL CUT-OUT EC NO: UCP2012-0335 DRAWING MORGAN 2011/08/12 CHKD: MPOFF 2014/04/11 APPR: SMILLER 2014/05/17	QUALITY SYMBOLS ▽=0 ▽=0 ▽=0	GENERAL TOLERANCES (UNLESS SPECIFIED)		DIMENSION STYLE INCH ONLY		SCALE 4:1	DESIGN UNITS INCH	THIRD ANGLE PROJECTION	
		mm	INCH	DRAWN BY MOS	DATE 1993/02/08	TITLE .050" PITCH LFH 60 CKT RIGHT ANGLE I/O RECEPTACLE			
4 PLACES ± --- ± ---		3 PLACES ± --- ± .010		CHECKED BY CAB	DATE 1993/02/08	DOCUMENT NO. SDA-70928-20**			
2 PLACES ± 0.25 ± .015		1 PLACE ± 0.38 ± ---		APPROVED BY CAB	DATE 1993/02/08	SHEET NO. 1 OF 2			
0 PLACE ± --- ± ---		ANGULAR ±1/2°		MATERIAL NO. SEE TABLE		THIS DRAWING CONTAINS INFORMATION THAT IS PROPRIETARY TO MOLEX. INCORPORATED AND SHOULD NOT BE USED WITHOUT WRITTEN PERMISSION			
DRAFT WHERE APPLICABLE MUST REMAIN WITHIN DIMENSIONS		SIZE C							



COMPONENT SIDE
RECOMMENDED P.C.B. LAYOUT



RECOMMENDED PANEL CUT-OUT

DIM. 'B'	PANEL THICKNESS
.400±.005	.039
.420±.005	.064

SEE SHEET 1 EC NO: UCP2012-0335 DRW:DMORGAN 2011/08/12 CHK:DMPOFF 2014/04/11 APPR:SMILLER 2014/05/12	QUALITY SYMBOLS ▽=0 ▽=0 ▽=0	GENERAL TOLERANCES (UNLESS SPECIFIED) <table border="1"> <thead> <tr> <th></th> <th>mm</th> <th>INCH</th> </tr> </thead> <tbody> <tr> <td>4 PLACES</td> <td>±.010</td> <td>±.0004</td> </tr> <tr> <td>3 PLACES</td> <td>±.015</td> <td>±.0006</td> </tr> <tr> <td>2 PLACES</td> <td>±.025</td> <td>±.0010</td> </tr> <tr> <td>1 PLACE</td> <td>±.038</td> <td>±.0015</td> </tr> <tr> <td>0 PLACE</td> <td>±.050</td> <td>±.0020</td> </tr> </tbody> </table>		mm	INCH	4 PLACES	±.010	±.0004	3 PLACES	±.015	±.0006	2 PLACES	±.025	±.0010	1 PLACE	±.038	±.0015	0 PLACE	±.050	±.0020	DIMENSION STYLE INCH ONLY DRAWN BY: MOS DATE: 1993/02/08 CHECKED BY: CAB DATE: 1993/02/08 APPROVED BY: CAB DATE: 1993/02/08	SCALE: 4:1 DESIGN UNITS: INCH THIRD ANGLE PROJECTION	TITLE: .050" PITCH LFH 60 CKT RIGHT ANGLE I/O RECEPTACLE molex
		mm	INCH																				
	4 PLACES	±.010	±.0004																				
	3 PLACES	±.015	±.0006																				
2 PLACES	±.025	±.0010																					
1 PLACE	±.038	±.0015																					
0 PLACE	±.050	±.0020																					
	MATERIAL NO. SEE TABLE	DOCUMENT NO. SDA-70928-20**	SHEET NO. 2 OF 2																				
	DRAFT WHERE APPLICABLE MUST REMAIN WITHIN DIMENSIONS	ANGLAR ±1/2°	SIZE: C	THIS DRAWING CONTAINS INFORMATION THAT IS PROPRIETARY TO MOLEX INCORPORATED AND SHOULD NOT BE USED WITHOUT WRITTEN PERMISSION																			