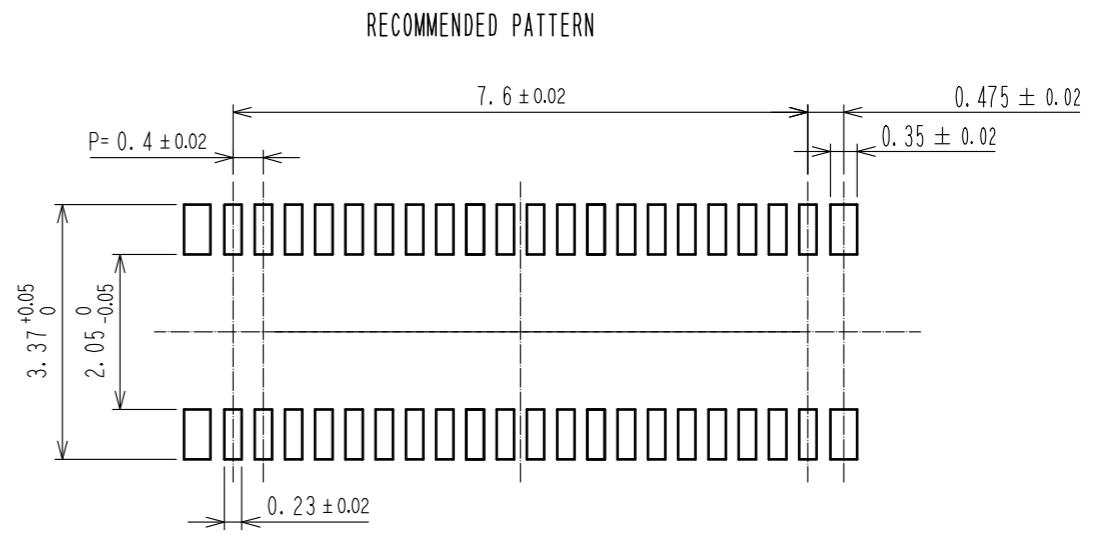
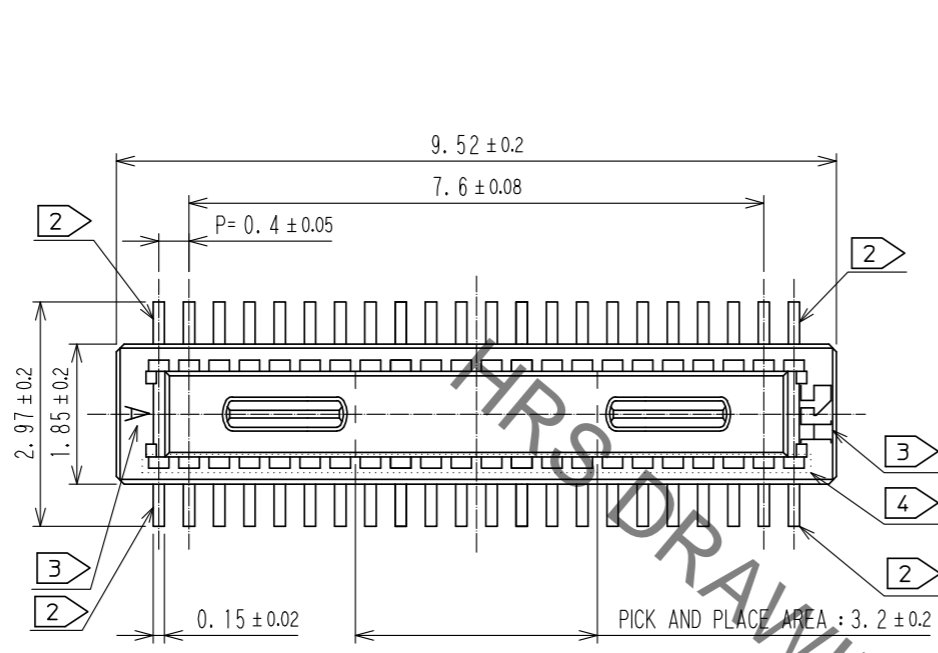
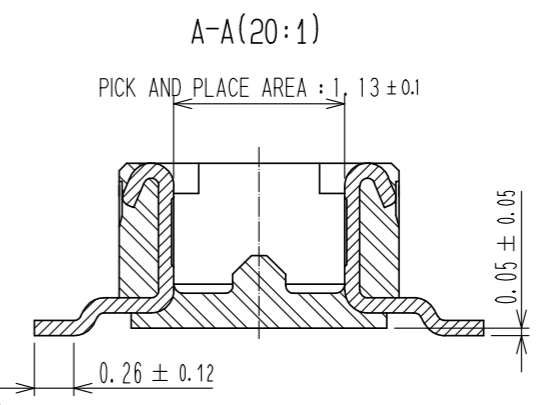
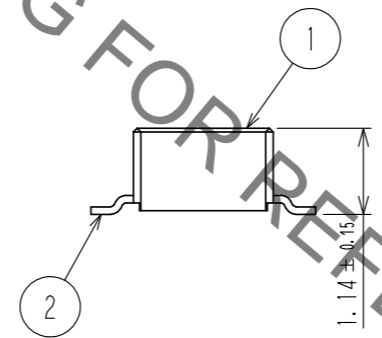
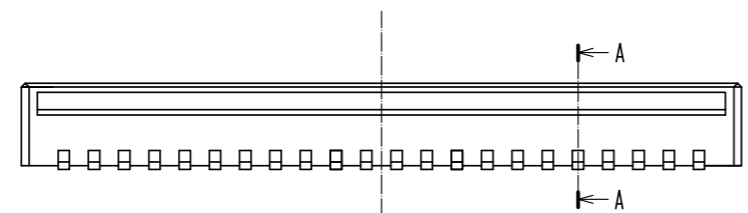


May.1.2023 Copyright 2023 HIROSE ELECTRIC CO., LTD. All Rights Reserved.
In case of consideration for using Automotive equipment / device which demand high reliability, kindly contact our sales window correspondents.



RECOMMENDED METAL MASK THICKNESS : 120 μm
RECOMMENDED METAL MASK OPENING RATIO : 80% FOR LEAD PAD



- NOTES
- 1. ALL LEADS CO-PLANARITY SHALL BE 0.1mm MAX.
 - 2. EACH ONE CONTACT AT 4 CORNERS SHALL BE METAL HOLD DOWN.
 - 3. HRS MARK AND CAV NO. ARE LOCATED IN APPROXIMAL AREA.
 - 4. THERE IS A POSSIBILITY THAT THE RESIN WILL BE EXPOSED AT THIS AREA. BUT THIS WILL NOT AFFECT THE CONTACT RELIABILITY.

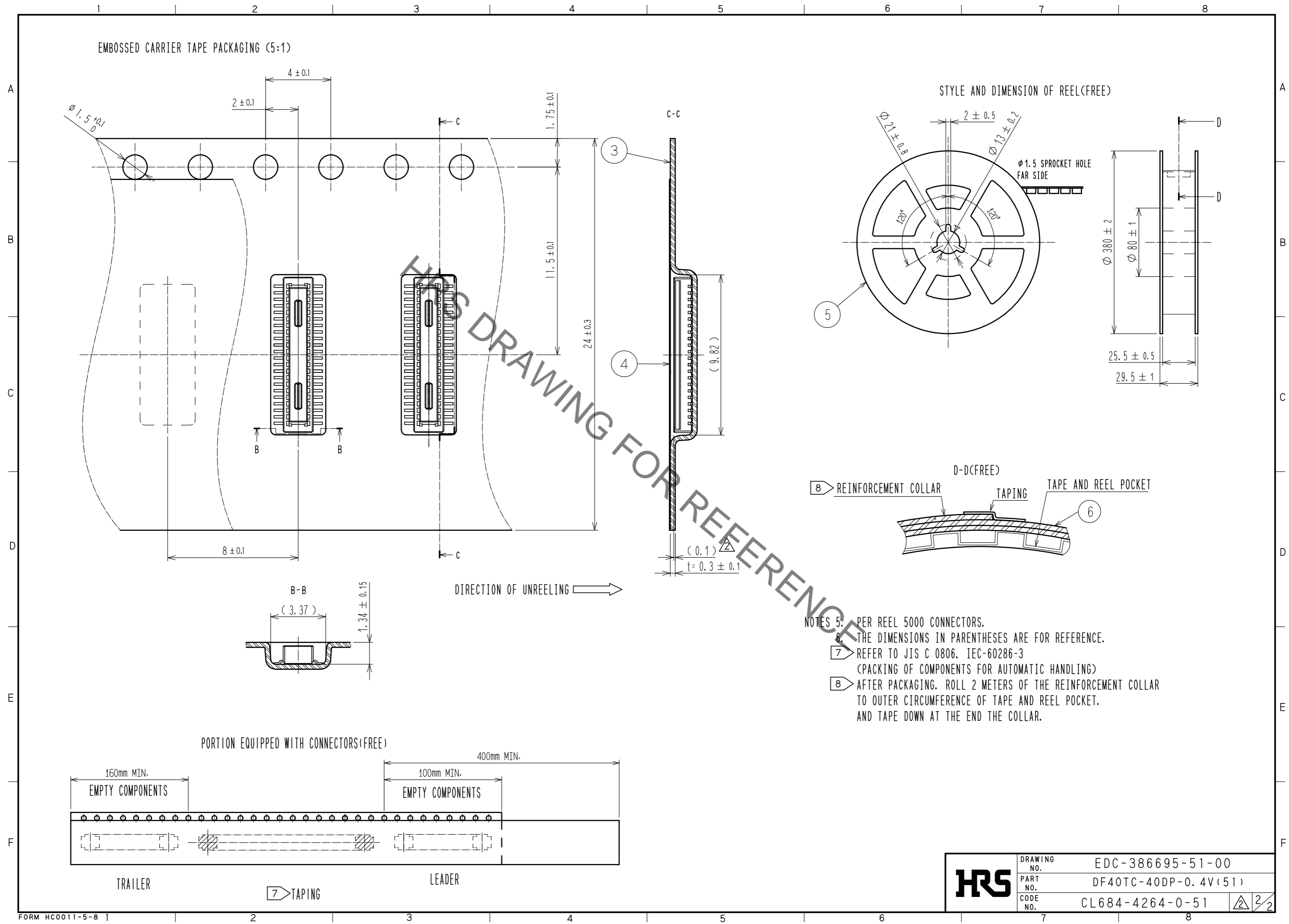
| NO. | MATERIAL | FINISH | REMARKS | NO. | MATERIAL | FINISH | REMARKS |
|-----|--------------|-------------------------------|---------|-----------|------------------------------|--------|---------|
| 2 | COPPER ALLOY | CONTACT AREA:GOLD 0.05 μm MIN | 6 | PS | CLEAR, REINFORCEMENT COLLAR | | |
| | | SMT LEAD:GOLD 0.05 μm MIN | 5 | PS | BLACK, PLASTIC REEL | | |
| | | UNDERPLATING:NICKEL 1 μm MIN | 4 | POLYESTER | CLEAR, COVER TAPE | | |
| 1 | LCP | BLACK, UL94V-0 | 3 | PS | CLEAR, EMBOSSED CARRIER TAPE | | |

| UNITS | SCALE | COUNT | DESCRIPTION OF REVISIONS | DESIGNED | CHECKED | DATE |
|-------|-------|-------|--------------------------|------------|--------------|----------|
| mm | 10:1 | 2 | DIS-H-00005725 | YK. SATAKE | TS. MIYAZAKI | 20200204 |

| APPROVED | CHECKED | DESIGNED | DRAWN | NO. | NO. | NO. | NO. |
|-------------|--------------|---------------|-----------|----------|----------|----------|----------|
| WR. FUKUCHI | TS. MIYAZAKI | TY. MORISHITA | PAN YIWEI | 20190523 | 20190523 | 20190523 | 20190523 |

| DRAWING NO. | PART NO. | CODE NO. |
|------------------|----------------------|-----------------|
| EDC-386695-51-00 | DF40TC-40DP-0.4V(51) | CL684-4264-0-51 |

May.1.2023 Copyright 2023 HIROSE ELECTRIC CO., LTD. All Rights Reserved.
 In case of consideration for using Automotive equipment / device which demand high reliability, kindly contact our sales window correspondents.



- NOTES
- 5. PER REEL 5000 CONNECTORS.
 - 6. THE DIMENSIONS IN PARENTHESES ARE FOR REFERENCE.
 - 7. REFER TO JIS C 0806, IEC-60286-3 (PACKING OF COMPONENTS FOR AUTOMATIC HANDLING)
 - 8. AFTER PACKAGING, ROLL 2 METERS OF THE REINFORCEMENT COLLAR TO OUTER CIRCUMFERENCE OF TAPE AND REEL POCKET. AND TAPE DOWN AT THE END THE COLLAR.

| | | |
|------------|-------------|----------------------|
| HRS | DRAWING NO. | EDC-386695-51-00 |
| | PART NO. | DF40TC-40DP-0.4V(51) |
| | CODE NO. | CL684-4264-0-51 |
| | | 2/2 |