

Waterproof HDMI Adapter

M22-Panel mount Connector
Front mounting HDMI Adapter

Protection: IP 64 / IP 67
(Assembled with CAP)

Contacts: 19

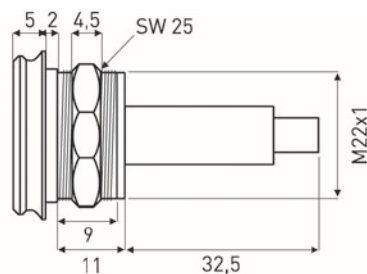
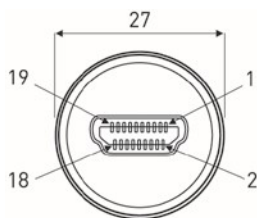
Housing: Plastic, Black (PA)

Cap: Elastolan®

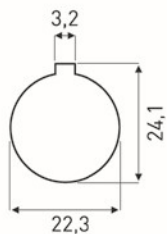
Plastic nut: Plastic, Black (PA)

Contact plating: Gold

Kit: Including CAP + nut

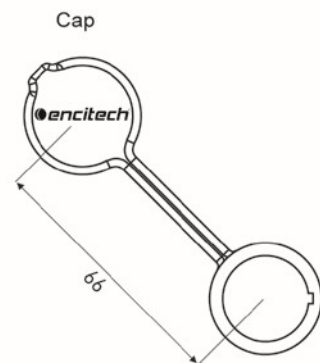


Recommended
Panel Cut out



Pin Assignment

3		3	[TMD5 Data 2-]
1		1	[TMD5 Data 2+]
2		2	[TMD5 Data 2 Shield]
6		6	[TMD5 Data 1-]
4		4	[TMD5 Data 1+]
5		5	[TMD5 Data 1 Shield]
9		9	[TMD5 Data 0-]
7		7	[TMD5 Data 0+]
8		8	[TMD5 Data 0 Shield]
12		12	[TMD5 Clock -]
10		10	[TMD5 Clock +]
11		11	[TMD5 Clock Shield]
18		18	[+5V Power]
17		17	[Ground]
15		15	[DCC Clock]
16		16	[DCC Data]
19		19	[Hot Plug Detect]
13		13	[CEC]
14		14	[NO FUNCTION]
SHELL		SHELL	[SHELL]



M22 HDMI Adapter

Connector:

Part No:

Panel Conn, Black

1310-1033-01



Encitech AB
Rörkullsvägen 4
SE-302 41 HALMSTAD, Sweden

Tel: +46-(0)35-15 13 90
e-mail: connectors@encitech.com

www.encitech.com