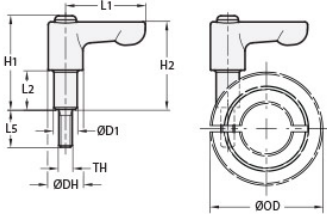




## LF45-CL-M6:20-ZS-O

Ruland Flat Orange Adjustable Lever, Lever Length 45mm, Stud Thread M6, Stud Length 18mm, Sleeve Length 20mm, Zinc Lever, Stainless Steel Inserts




### Description

Ruland LF45-CL-M6:20-ZS-O is an adjustable clamping lever with a 45mm long flat handle, M6 threaded stud, 18mm stud length, 20mm sleeve, and 40.5mm overall height. The threaded stud is designed to replace standard M6x20 hardware in Ruland one- and two-piece shaft collars. Once installed on the shaft collar, the lever is turned until the user reaches their desired torque. It does not require any tools to install, making it ideal for applications that require frequent setup changes and adjustments. LF45-CL-M6:20-ZS-O is orange for safety and ease of identification. It is manufactured by Otto Ganter, stocked by Ruland, and RoHS3 and REACH compliant.

### Product Specifications

<b>Thread (TH)</b>	M6	<b>Stud Length LS</b>	18 mm
<b>Lever Length L1</b>	45 mm	<b>Overall Height H1</b>	40.5 mm
<b>Hub Height H2</b>	38 mm	<b>Hub Diameter DH</b>	13 mm
<b>Thread Pitch</b>	1 mm	<b>Sleeve Length L2</b>	20 mm
<b>Sleeve Diameter D1</b>	10 mm	<b>Handle Material</b>	Zinc
<b>Handle Color</b>	Orange	<b>Insert and Screw Material</b>	303 Stainless Steel
<b>Weight (lbs)</b>	0.103600	<b>Manufacturer</b>	JW Winco/ Otto Ganter
<b>UPC</b>	634529291764	<b>Country of Origin</b>	Germany
<b>Tariff Code</b>	8487.90.0080	<b>UNSPC</b>	31162807

**Note 1** Performance ratings are for guidance only. The user must determine suitability for a particular application.

**Prop 65**  **WARNING** This product can expose you to chemicals including Soots, Benzene, Lead, and Nickel (metallic), known to the State of California to cause cancer, and Lead and Benzene known to the State of California to cause birth defects or other reproductive harm. For more information go to [www.P65Warnings.ca.gov](http://www.P65Warnings.ca.gov).