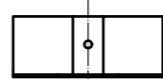
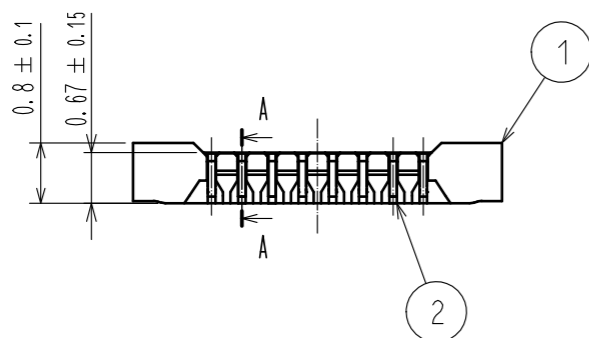
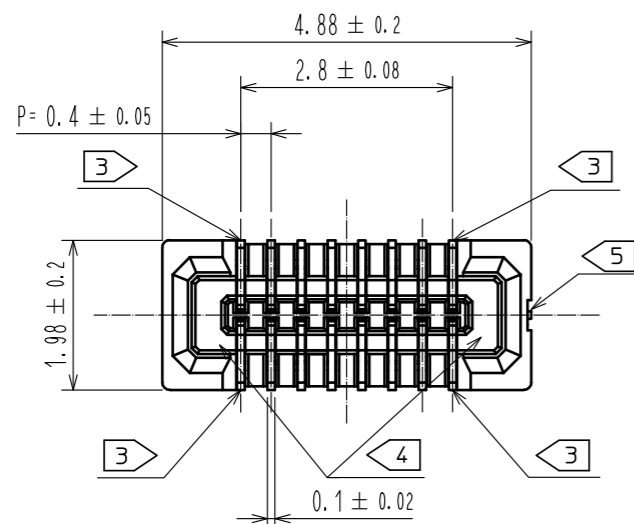
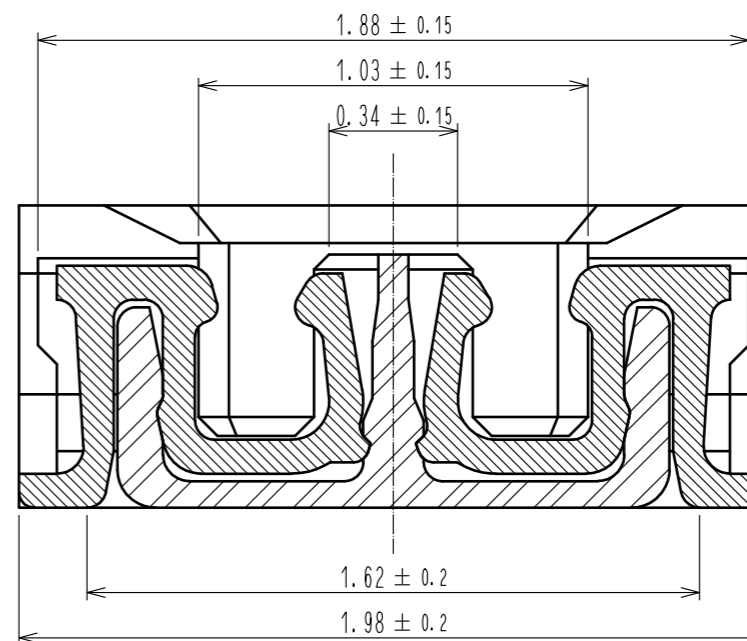


May.1.2023 Copyright 2023 HIROSE ELECTRIC CO., LTD. All Rights Reserved.  
In case of consideration for using Automotive equipment / device which demand high reliability, kindly contact our sales window correspondents.

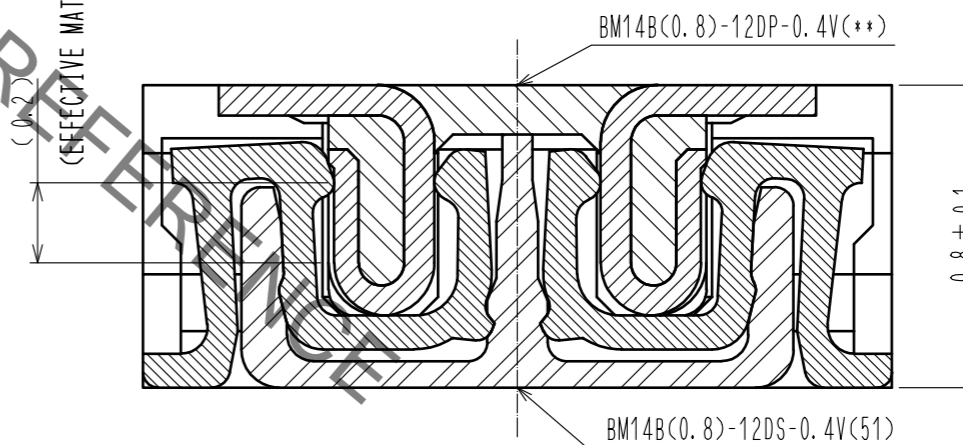


HRS DRAWING FOR REFERENCE

A-A (50:1)



ENGAGEMENT FIGURE (50:1)



NOTE) 1 . ALL LEAD CO-PLANARITY SHALL BE 0.08mm MAX

2 CONTACT PLATING SPECIFICATIONS.

CONTACT AREA : GOLD 0.05 μm MIN

SMT LEAD : GOLD 0.05 μm MIN

UNDERPLATING : NICKEL 1 μm MIN

( SURFACE : SEALING )

3 EACH CONTACTS AT 4 CORNERS ARE PROVIDED FOR METAL FITTINGS AND GROUNDING PURPOSE.

4 HRS MARK AND CAV NO. ARE INDICATED IN APPROX POSITION SHOWN.

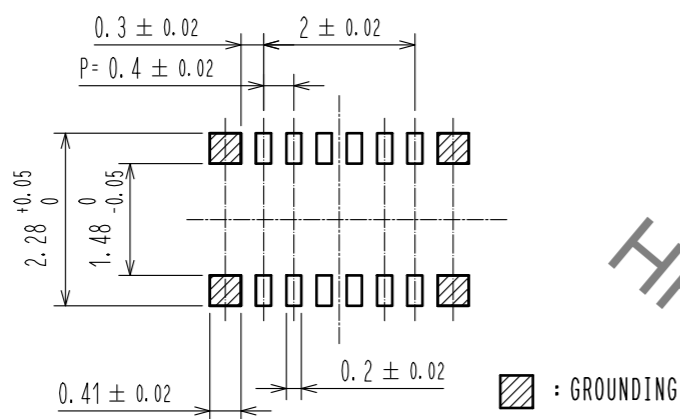
5 GATE POSITION IS INDICATED IN APPROX POSITION SHOWN.

3	PS	CLEAR (ENBOSSED CARRIER TAPE)	6	PS	CLEAR (REINFORCEMENT COLLAR)
2	PHOSPHOR BRONZE	2	5	PS	BLACK (PLASTIC REEL)
1	LCP	UL94 V-0, BLACK	4	POLYESTER	CLEAR (COVER TAPE)
NO.	MATERIAL	FINISH . REMARKS	NO.	MATERIAL	FINISH . REMARKS

UNITS mm		SCALE 10:1	COUNT 1	DESCRIPTION OF REVISIONS	DESIGNED	CHECKED	DATE
HIROSE ELECTRIC CO., LTD.				APPROVED : MO. ISHIDA 15.09.30 CHECKED : TS. MIYAZAKI 15.09.30 DESIGNED : SH. HOSODA 15.09.30 DRAWN : KR. AJITO 15.09.30	DRAWING NO. EDC-329242-51-01 PART NO. BM14B(0.8)-12DS-0.4V(51) CODE NO. CL684-8041-4-51		

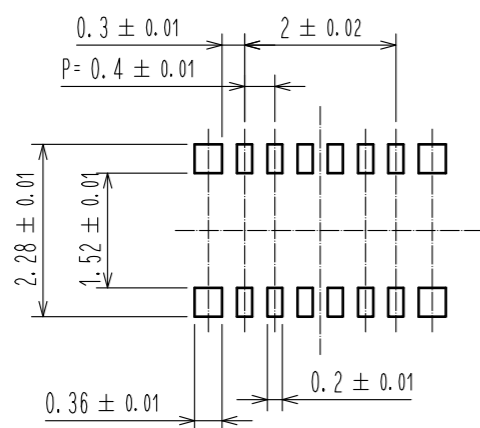
May.1.2023 Copyright 2023 HIROSE ELECTRIC CO., LTD. All Rights Reserved.  
In case of consideration for using Automotive equipment / device which demand high reliability, kindly contact our sales window correspondents.

◆ RECOMMENDED PCB LAYOUT

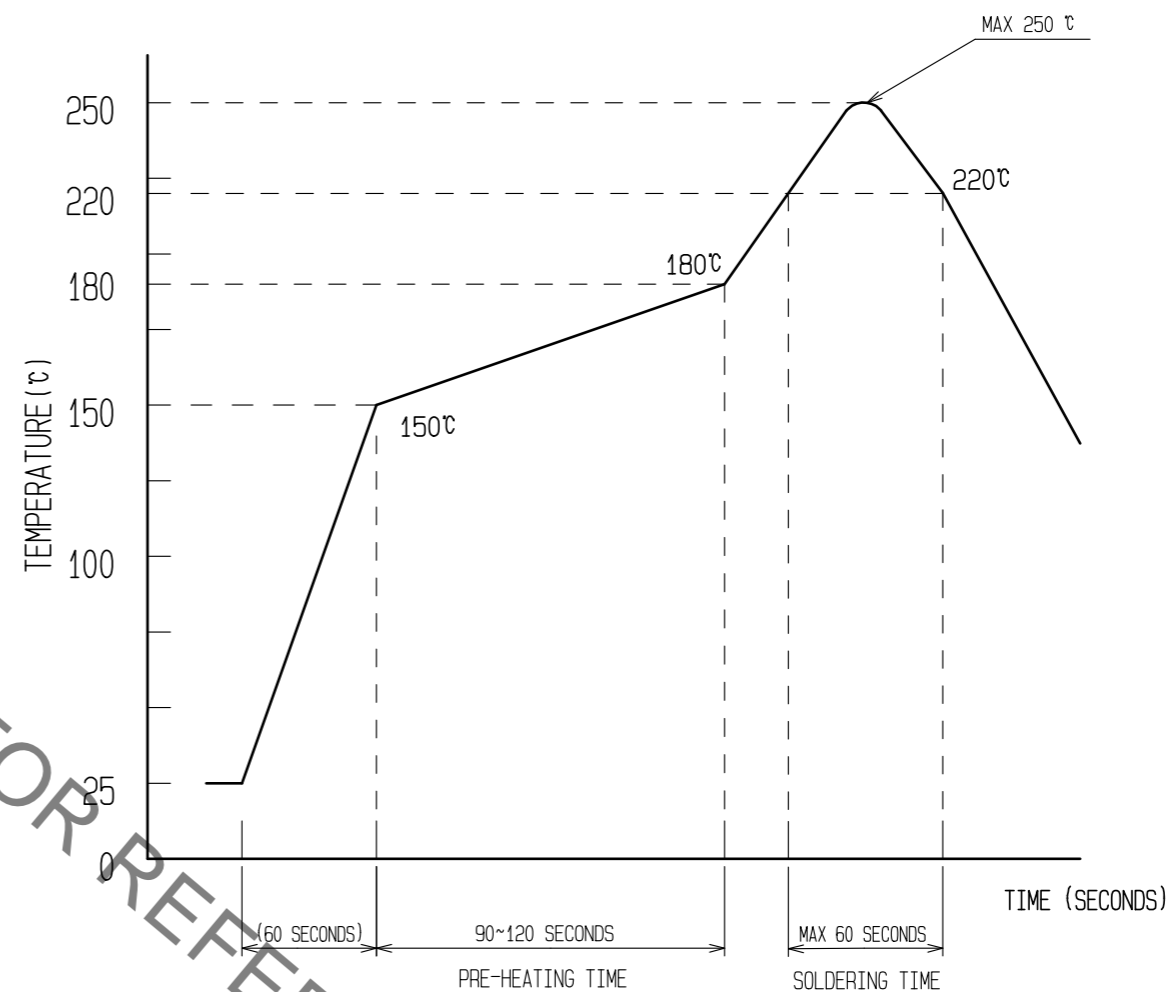


◆ RECOMMENDED METAL MASK DIMENSIONS

METAL MASK THICKNESS : 100 μm



⑥ RECOMMENDED REFLOW TEMPERATURE PROFILE USING LEAD-FREE SOLDER PASTE.



REFLOW METHOD: IR REFLOW  
NUMBER OF REFLOW CYCLES: 2 CYCLES MAX.

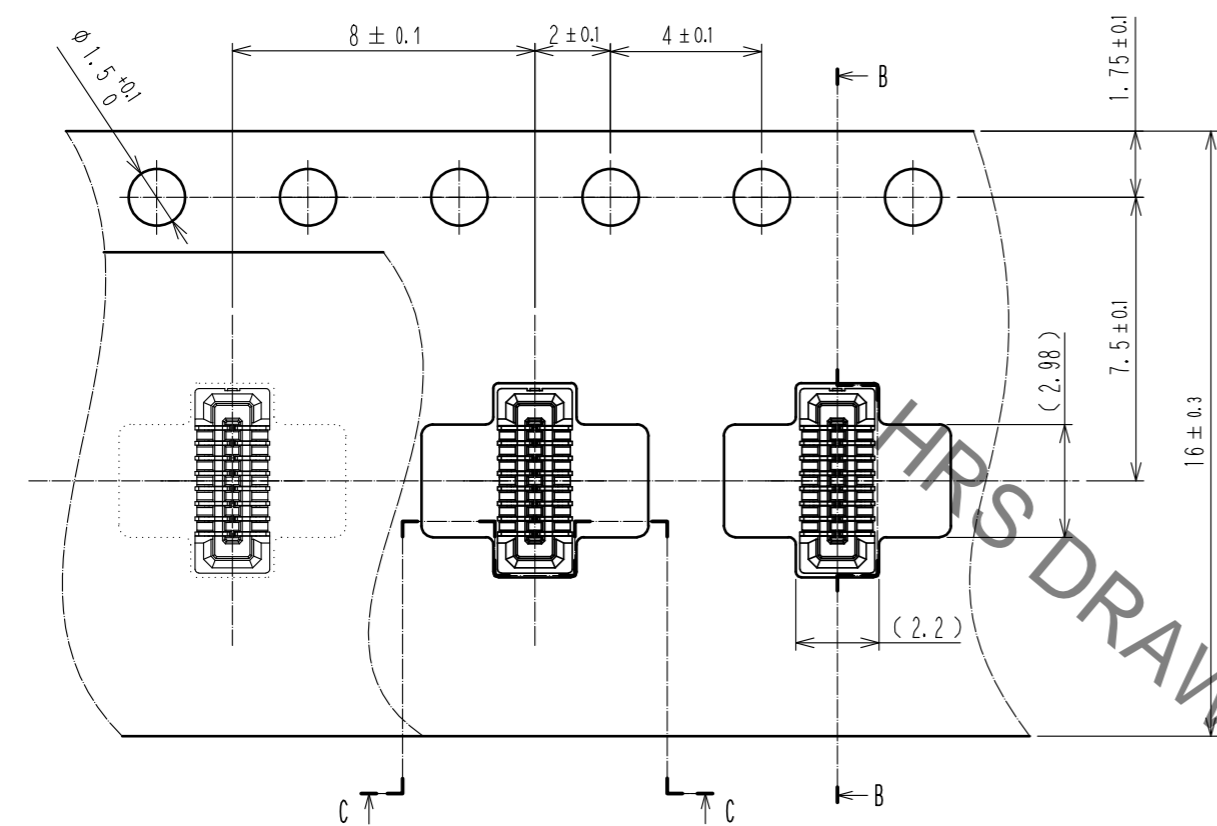
- 1) REFLOW TIME  
DURATION ABOVE 220°C: 60 SEC. MAX.  
(PEAK TEMPERATURE: 250°C MAX)
- 2) PRE-HEAT TIME  
PRE-HEAT TEMPERATURE(MIN): 150°C  
PRE-HEAT TEMPERATURE(MAX): 180°C  
PRE-HEAT TIME: 90-120 sec.

⑥ THIS TEMPERATURE PROFILE IS PER THE CONDITIONS SHOWN ABOVE. ADDITIONAL FACTORS, SUCH AS SOLDER PASTE TYPE, PCB SIZE AND OTHER MOUNTED COMPONENTS COULD AFFECT THE PROFILE, THEREFORE, A THOROUGH EVALUATION OF MOUNTING CONDITION IS REQUIRED PRIOR TO PRODUCTION. TEMPERATURE IS MEASURED AT CONTACT LEAD.

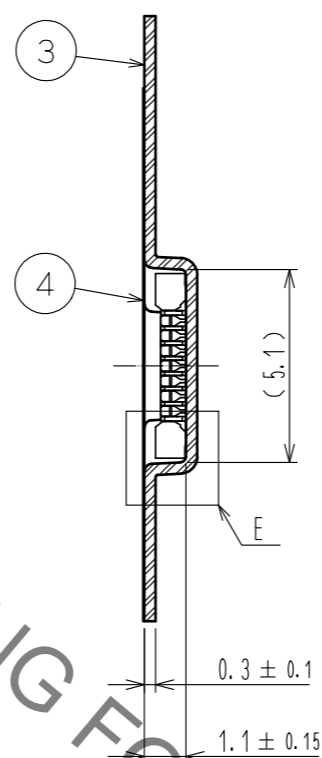
<b>HRS</b>	DRAWING NO.	EDC-329242-51-01
	PART NO.	BM14B(0.8)-12DS-0.4V(51)
	CODE NO.	CL684-8041-4-51

May.1.2023 Copyright 2023 HIROSE ELECTRIC CO., LTD. All Rights Reserved.  
In case of consideration for using Automotive equipment / device which demand high reliability, kindly contact our sales window correspondents.

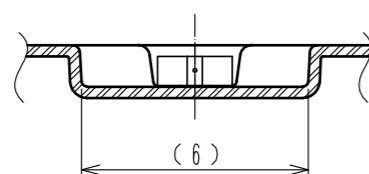
# EMBOSSED CARRIER TAPE PACKAGING (5:1)



B-B (5:1)

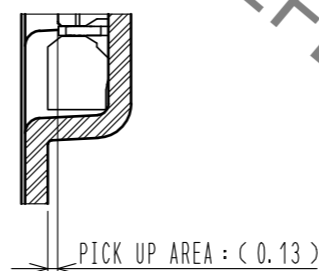


C-C (5:1)

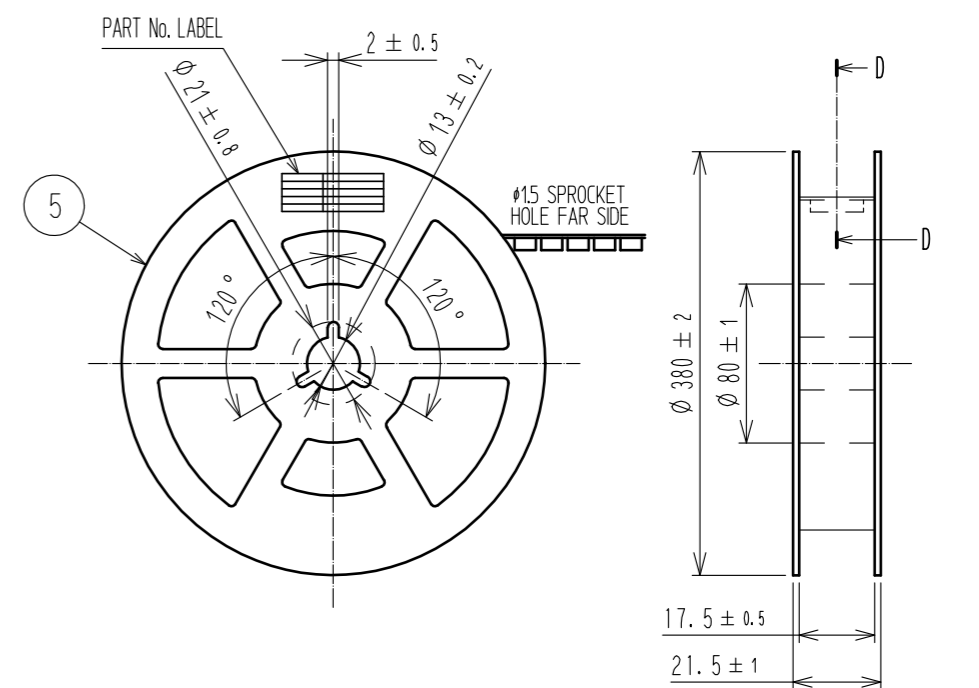


DIRECTION OF UNREELING  $\rightarrow$

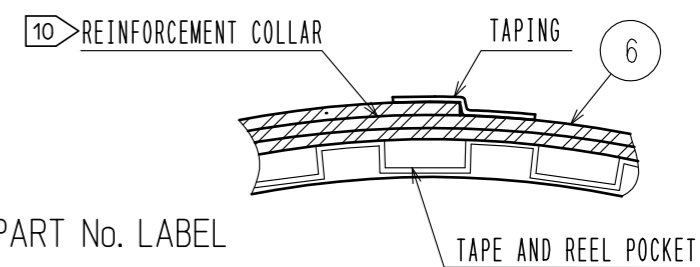
E(10:1)



## STYLE AND DIMENTION OF REEL (FREE)



D-D (FREE)

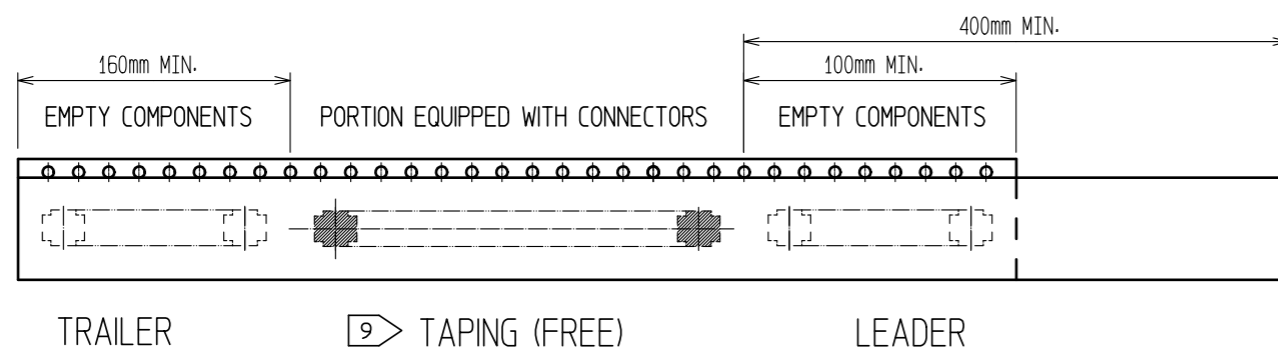


### DETAIL OF PART No. LABEL

SUPPLIER  
QUANTITY  
PART No.  
CODE No.  
DATE OF MANUFACTURED

製造年月日	** ** *
製品コード	CL684-8041-4-51
製品名	BM14B(0.8)-12DS-0.4V(51)
数量	8,000
納入者	ヒロセ電機(株)

- 7. PER REEL 8000 CONNECTORS.
- 8. THE DIMENSIONS IN PARENTHESES ARE FOR REFERENCE.
- 9 REFER TO JIS C 0806. IEC 60286-3(PACKAGING OF COMPONENTS FOR AUTOMATIC HANDLING)
- 10 AFTER PACKAGING, ROLL 2 METERS OF THE REINFORCEMENT COLLAR TO OUTER CIRCUMFERENCE OF TAPE AND REEL POCKET, AND TAPE DOWN AT THE END THE COLLAR.



<b>HRS</b>	DRAWING NO.	EDC-329242-51-01
	PART NO.	BM14B(0.8)-12DS-0.4V(51)
	CODE NO.	CL684-8041-4-51
		$\triangle$ 3/3